



## **NSW North Coast Sustainable Aquaculture Strategy-Land Based Aquaculture**

### **Readers' Note**

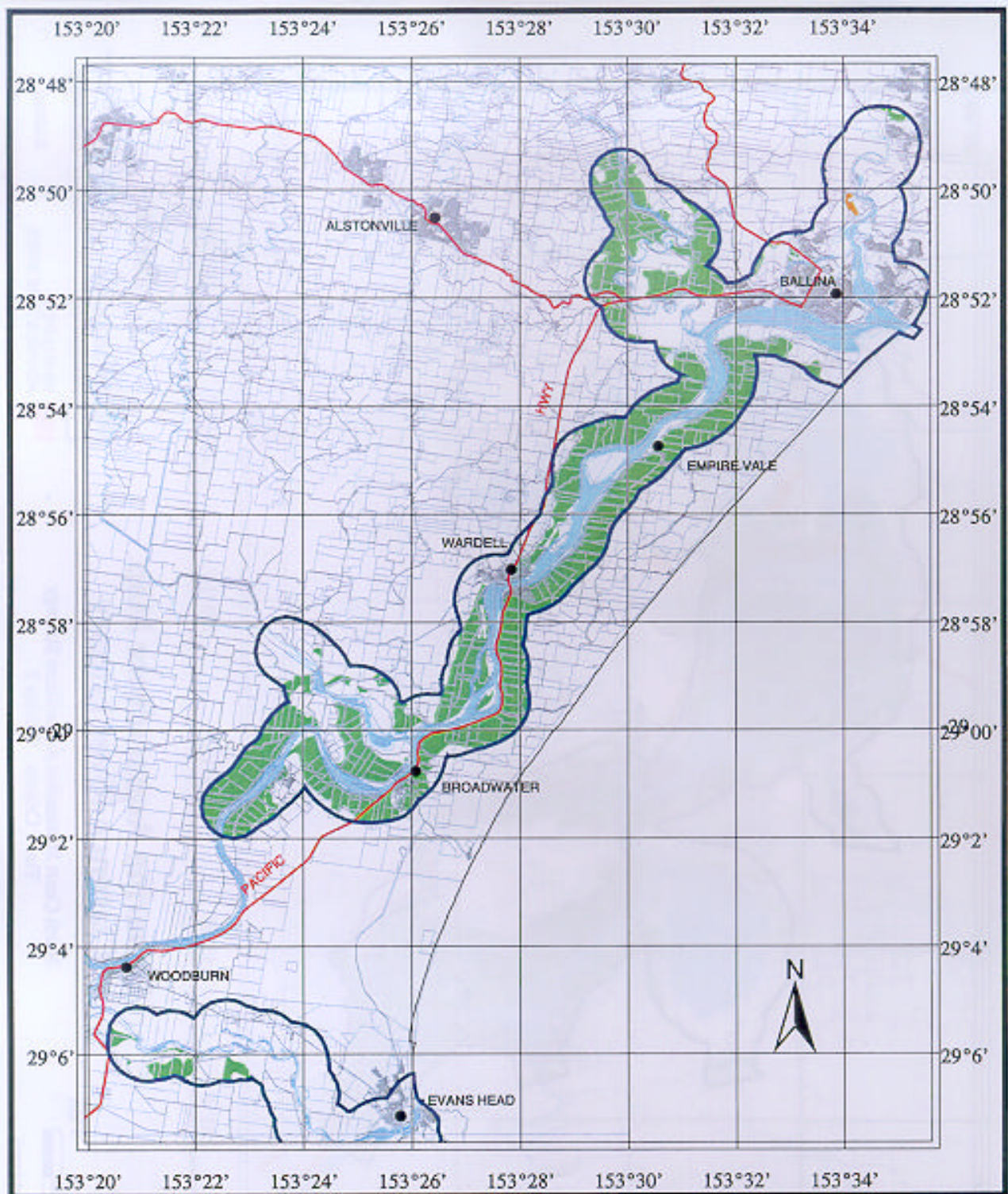
---

This document is part of a larger publication. The remaining parts and full version of the publication can be found at:

<http://www.dpi.nsw.gov.au/fisheries/aquaculture/publications/general-management-and-policy/nsw-north-coast-sustainable-aquaculture-strategy>

Updated versions of this document can also be found at the above web address.

This document is subject to the disclaimers and copyright of the full version from which it is extracted. These disclaimers and copyright statements are available in the appropriate document at the above web address.



## Estuarine Aquaculture Map Richmond River Estuary

North Coast Sustainable Aquaculture Strategy  
Tier 1 Criteria - Edition 2



LAND & WATER  
CONSERVATION  
PRODUCED BY THE  
RESOURCE INFORMATION  
UNIT GRAFTON.  
January 2000

2 0 2 4 km



Scale 1:200000

### LEGEND

- |  |                             |  |            |
|--|-----------------------------|--|------------|
|  | TIER 1 SUITABLE SITES       |  | WATER BODY |
|  | 1km BUFFER                  |  | CADASTRE   |
|  | DEVELOPED AQUACULTURE SITES |  | RIVERS     |
|  |                             |  | HIGHWAY    |