



# FORESTS NSW

Facts and Figures  
2009–10

Forests NSW is a public trading enterprise within Industry & Investment NSW

# A leader in safe, ecologically sustainable forest management

Forests NSW operates as a public trading enterprise within Industry & Investment NSW.

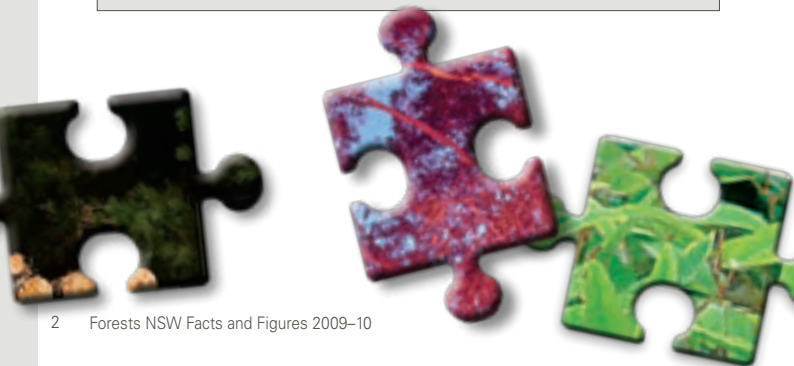
Forests NSW will:

- conserve and utilise timber under its management to the best advantage of the State;
- provide adequate supplies of timber;
- preserve and improve the soil resources and water catchment capabilities of lands under its management;
- encourage the use of timber;
- preserve the native flora, promote and encourage the use of State forests for recreation, and conserve birds and animals, consistent with the use of State forests for the purposes of forestry and of flora reserves;
- provide natural resource environmental services; and
- take all practical steps to ensure the preservation and enhancement of the quality of the environment.

Forests NSW is funded to provide specific public services, such as education and recreational facilities. However the primary source of funds is through revenue associated with the services provided and the sale of timber.

## What does sustainability mean to us?

Managing State forests for the long term and retaining opportunities for future generations to meet their needs and expectations, while providing for the present.



## Within the bigger picture – forestry statistics

Description	Australia	NSW	Forests NSW
Total land area (million ha)	770	80	2.4
Total population (million)	21	7	n/a
Forests as a percentage of land area	19%	33%	99%
Total forest area (million ha)	149	26.5	2.4
Native forest area (million ha) <sup>1</sup>	147	26.2	2.1
Native forest area in formal nature conservation reserves (million ha)	22	5.1	0.02
Area of forest not legally restricted from timber harvesting (million ha)	113	19.9	1.3
Multiple-use public native forests (million ha)	9.4	2.4	
Area of native production forest harvested annually <sup>2</sup>	<1%	n/r	2%
Net plantation forest area (million ha)	1.97	0.37	0.28
Number of people employed in forestry & forest product industries <sup>3</sup>	47 071	12 744	839
Net amount of carbon sequestered (million tonnes) by managed native forests per annum (CO <sub>2</sub> -e)	43.5	n/r	1.6 <sup>4</sup>
Value of turnover in forest products industries (million)	\$19 000	n/r	\$329

Description	Australia
Total exports of wood products	\$2.4 billion
Major exports to	Japan (38%), New Zealand (17%), China (16%)
Total imports of wood products	\$4.3 billion
Major imports from	New Zealand (19%), China (10%), Indonesia (8%)
Forests contribution to GDP	1%

<sup>1</sup> Includes native forest remnants within planted forest estate for Forests NSW

<sup>2</sup> Forest NSW only removes a proportion of the trees over the harvested areas, except for cypress pine (26% of total area reported)

<sup>3</sup> Based on forestry and primary processing industries selected from the 2006 Census data for national and state figures

<sup>4</sup> From 2005 for Australia and 2009–10 for Forests NSW

### Sources:

DAFF State of the Forests Report 2008; DAFF National Plantation Inventory Update 2009;

Australian Bureau of Statistics

## Economic

- Generated over \$38 million in net cash allowing:
  - \$28 million in debt and accrued interest to be paid off
  - Purchase of 7 000 hectares of forest assets
  - Commitment to spend \$13 million to upgrade fleet
- 2.81 million m<sup>3</sup> of sawlogs and 1.79 million tonnes of pulpwood supplied to industry
- 622 567 greenhouse gas abatement certificates created, representing the equivalent number of tradable tonnes of CO<sub>2</sub> stored

## Australian and NSW timber production<sup>1</sup>

	2008-09			
	Australia		New South Wales	
	'000 m <sup>3</sup>	\$million	'000 m <sup>3</sup>	\$million
Broadleaved native	7 739	582	1 441	128
Broadleaved plantation	4 436	328	228	12
Cypress pine	197	18	62	nr
Plantation softwoods	13 157	804	3 643	208
Total	25 529	1 732	5 374	348

<sup>1</sup> Source: ABARES

## Forests NSW timber production

	2008-09		2009-10	
	'000 m <sup>3</sup>	Per Cent of total for NSW	'000 m <sup>3</sup>	Per Cent change since 2008-09
Broadleaved native	1 082	75%	1 116	3%
Broadleaved plantation	217	95%	197	-9%
Cypress pine	56	91%	60	5%
Plantation softwoods	3 099	85%	3 422	10%
Total	4 455	83%	4 795	8%

## Forests NSW Net Stocked Area by age-class groups

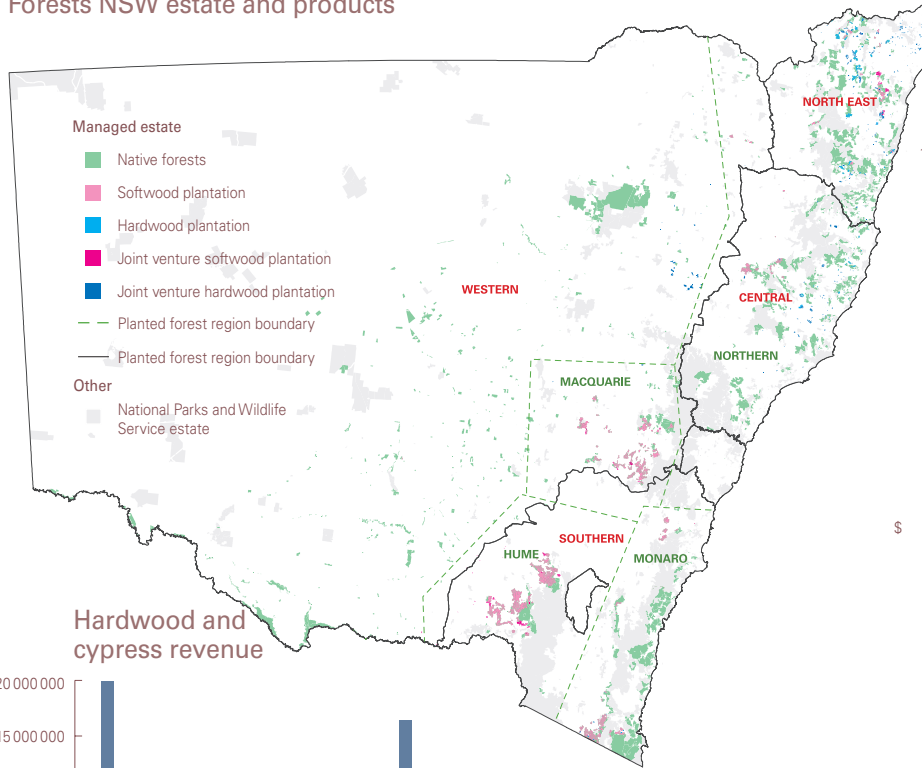
Species/Group	Age (years)			
	1-10	11-20	21-30	31-40+
<i>Pinus radiata</i>	53 370	39 352	63 731	28 818
Other softwood	3 742	2 911	3 301	3 115
Hardwood <sup>1</sup>	16 368	13 306	61	100

<sup>1</sup> Post-1994 hardwood plantations only. Established after the commencement of the State Forests Eucalypt Plantation Program and managed under the Plantations and Reafforestation Act 1999

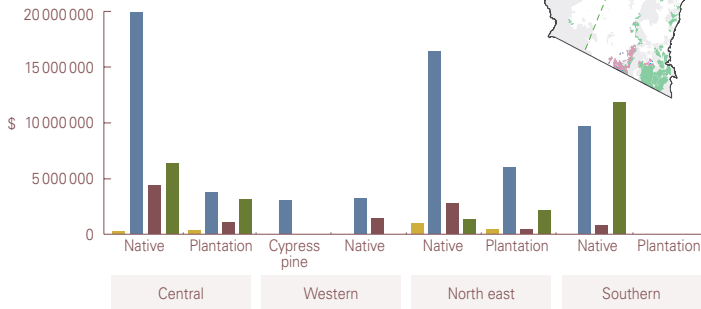
## Major customers

A rea	Customer	Products/Services
Plywood	Ausply, Big River Timbers and Carter Holt Harvey	Plywood flooring & stairs, structural bracing, Formply (concrete construction) and external cladding
Major softwood sawmillers	Auswest, Carter Holt Harvey, Colenden, Dale & Meyers, Highland Pine, Hyne & Son, McVicars Timber Group, Penrose Pine, Tarmac and Willmott Forest Products	Structural softwood timber for dwelling construction and renovation markets, internal joinery (e.g. windows and architraves) and furniture timbers, landscape timbers, treated softwood poles and treated decking
MDF and particleboard	Borg and Carter Holt Harvey	Medium Density Fiberboard used for various products including flooring, cabinets, bench tops and furniture
Softwood preservation	Pacpine, Penrose Pine and Willmott Timbers	Treated timber for outdoor applications such as decks, pergolas and landscape timbers
Pulp and paper	Boral Timber Fibre Exports, Norske Skog, Pentarch, South East Fibre Exports and Visy	Newsprint, writing paper, cardboard, tissues and paper towels
Major hardwood sawmillers	Australian Solar Timbers, Big River Timbers, Blue Ridge Hardwoods, Boral, Coffs Harbour Hardwoods, Davis & Herbert, Grants Holdings, Gunnedah Timbers, Gunns Timber Product, Hurfords, Koppers, Notaras and Thora	Kiln dried and green structural timber, strip flooring, furniture and joinery timber, bridge and engineering timber products, power poles, plywood products and external cladding decking
Investors	Agriwealth, Maslen Plantation Management and ST Microelectronics	Plantation investment
Utilities and infrastructure	Country Energy, Crown Castle, Optus, Telstra and Vodafone	Telecommunications and electricity supplier

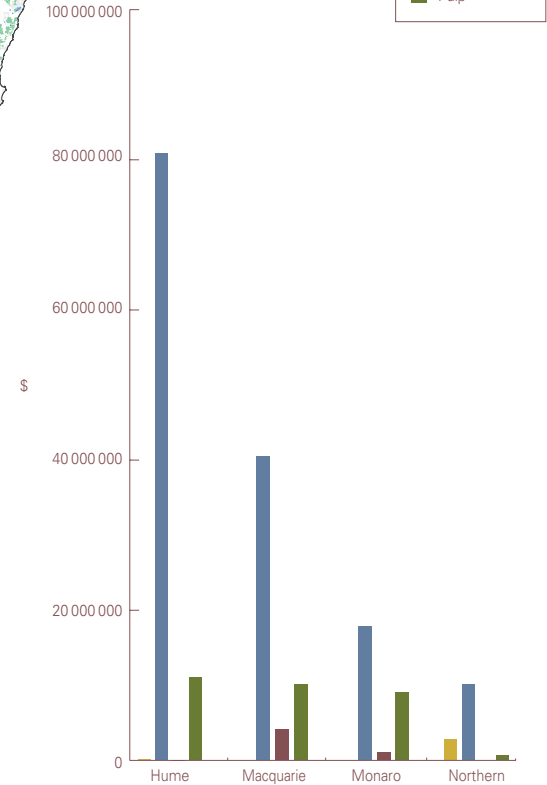
# Forests NSW estate and products



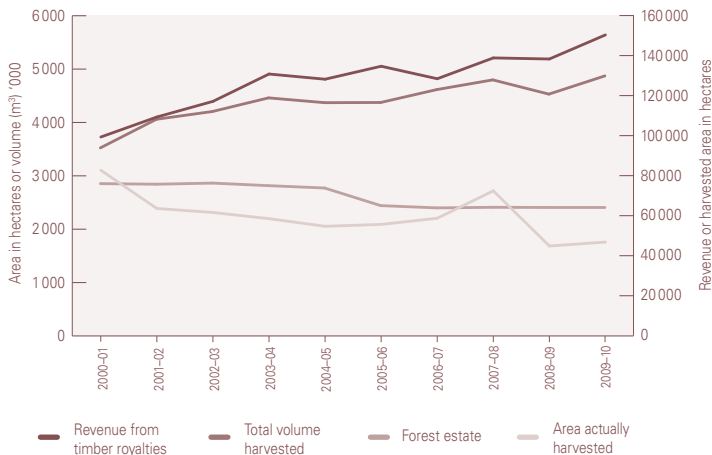
## Hardwood and cypress revenue



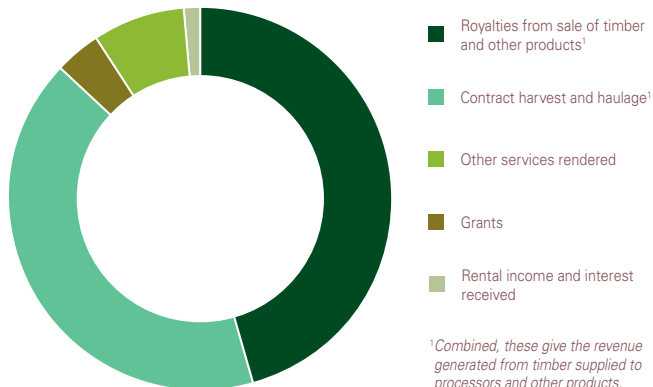
## Plantation softwood revenue



## Forest productivity



## Revenue sources



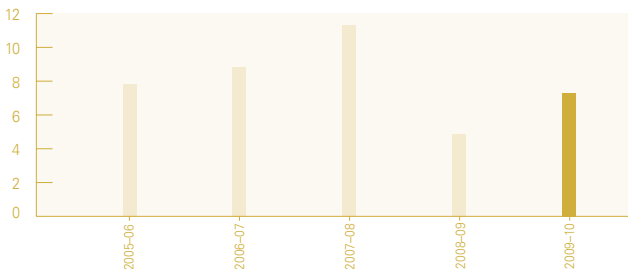
<sup>1</sup> Combined, these give the revenue generated from timber supplied to processors and other products.

## Social

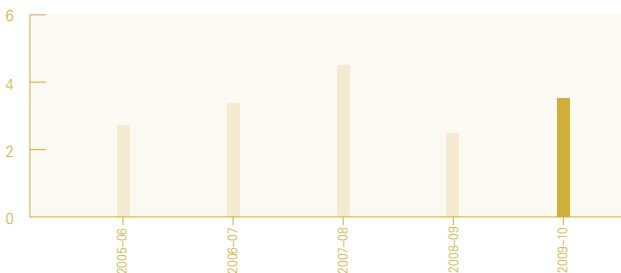
- 839 people directly employed by Forests NSW and an estimated 12 000 forest-dependent jobs in NSW
- \$5.4 million spent on research and \$2.5 million on education
- Over 8 000 hours attending forums attended by Forests NSW staff
- Over 4 311 people participating in programs at Cumberland State Forest

Our mission is to be the best and safest commercial forest manager in Australasia.

### Recordable Incident Rate



### Lost Time Incident Rate



Recordable Incident Rate is a recognised indicator of safety performance. Forests NSW is committed to a target rate of less than one.



# Environmental

- 2.4 million hectares of State forests, of which 2.1 million hectares is native forests
- \$5.4 million spent on harvesting supervision & environmental compliance in native forests
- 50 targeted species with 1 997 fauna sightings resulting in adaptive harvest or harvest exclusion applied
- \$10.6 million spent on fire fighting and bushfire prevention
- \$1.7 million spent on feral pest and weed control
- 13.9 million seedlings and cuttings grown in Forests NSW nurseries (age-class 2009)

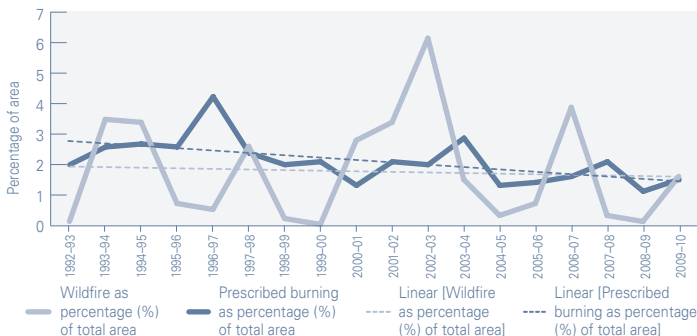
## Carbon in State forests

Estimated native forests carbon balance Measured in millions of tonnes (mega tonnes)	2009-10
Total standing volume CO <sub>2</sub>	949
Annual CO <sub>2</sub> sequestered forest growth	6.80
Annual CO <sub>2</sub> harvest storage in hardwood products	0.47
Annual CO <sub>2</sub> harvest emissions	1.30
Annual CO <sub>2</sub> fire emissions	3.43
Annual non CO <sub>2</sub> fire emissions	0.16

Estimated State forests carbon sequestration Annual sequestration (CO <sub>2</sub> -e mega tonnes)	2009-10
Native forests	1.60
Hardwood plantations	0.55
Softwood plantations	3.73

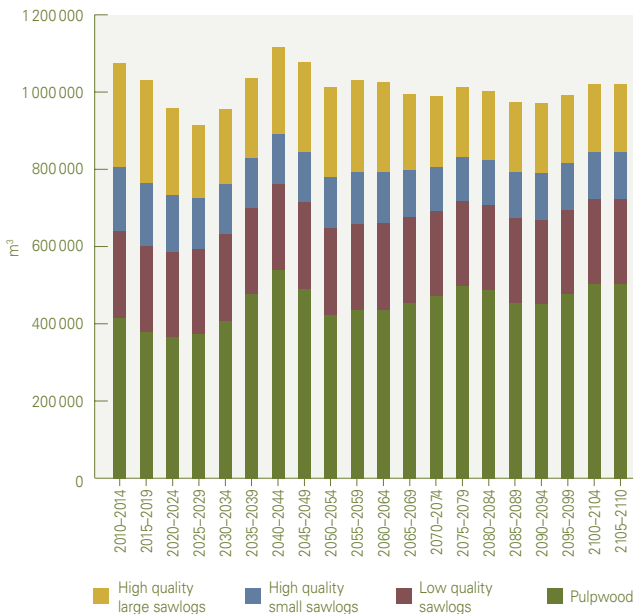
## Wildfires & prescribed burns trend as percentage of estate



# Sustainability

- 1.4 million hectares of native State forest available for timber harvesting
- Actual annual yield of sawlogs as a percentage of allowable volume was:
  - 81% hardwood forests; 100% cypress and 88% softwood plantations
- Plantation establishment:
  - 8 630 hectares of softwood plantation re-established and 472 hectares of new softwood plantations established
  - Over 2160 hectares of hardwood plantation re-established
- Trading profit of \$19.7 million

## Forests NSW native forests projected woodflow



Forests NSW forest management is independently certified as meeting the internationally recognised Australian Forestry Standard (AS 4708:2007).

Forest management certification is a market-based, voluntary forest management tool designed to recognise and promote environmentally responsible forestry and sustainability of forest resources.



PO Box 100, Beecroft 2119  
121–131 Oratava Ave  
West Pennant Hills 2125  
Ph: (02) 9872 0111 Fax: (02) 9871 5341  
Email: [cumberland@sf.nsw.gov.au](mailto:cumberland@sf.nsw.gov.au)