

working in forests today



GIS Analyst

Matt Nagel

Bachelor of Science

Collating, integrating, geo-processing and analysing spatial data to present spatial information as reports, maps and diagrams are all a major part of an analyst's work. At the same time there is the opportunity to work with interesting people from various professional backgrounds.

'Knowing where forest features are is fundamental to forest management. I work to identify the location and spatial distribution of many forest features such as forest boundaries, roads, rivers, protection zones and vegetation types. This allows the study of various components of the forest in relation to each other.'

'For me an especially interesting part of my job is discovering new landscapes and places that I didn't know existed, while utilising the latest computer and software technology. I particularly enjoy using spatial data, and working with digital imagery created from aeroplanes and satellites is a bonus.'

'Spatial data processed by GIS (Geographical Information Systems) Analysts can be used to create specialised maps, for example, maps to locate Equine Influenza infected properties or to help emergency service agencies with improved road networks to fight wildfires.'

'In addition, specialised spatial models and maps generated for Forest NSW carbon pool play an important part in making the calculations of the number of carbon credits available for the NSW Greenhouse Abatement Scheme.'

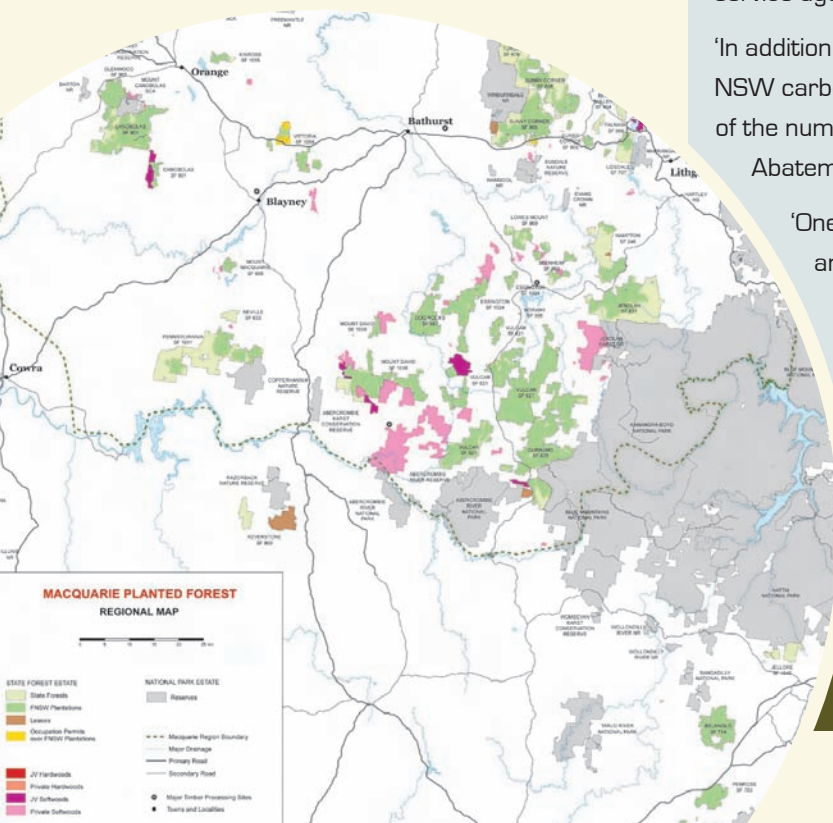
'One of the most rewarding aspects of my job is the reporting and mapping of information and how important this is to help people solve problems.'

Think logically, think spatially.

Left: An example of part of a Regional Forest Map generated by GIS staff



GIS Analyst - working with spatial data to prepare reports, maps and diagrams that are used as forest management tools.



Forests NSW is a public trading enterprise within NSW Department of Primary Industries