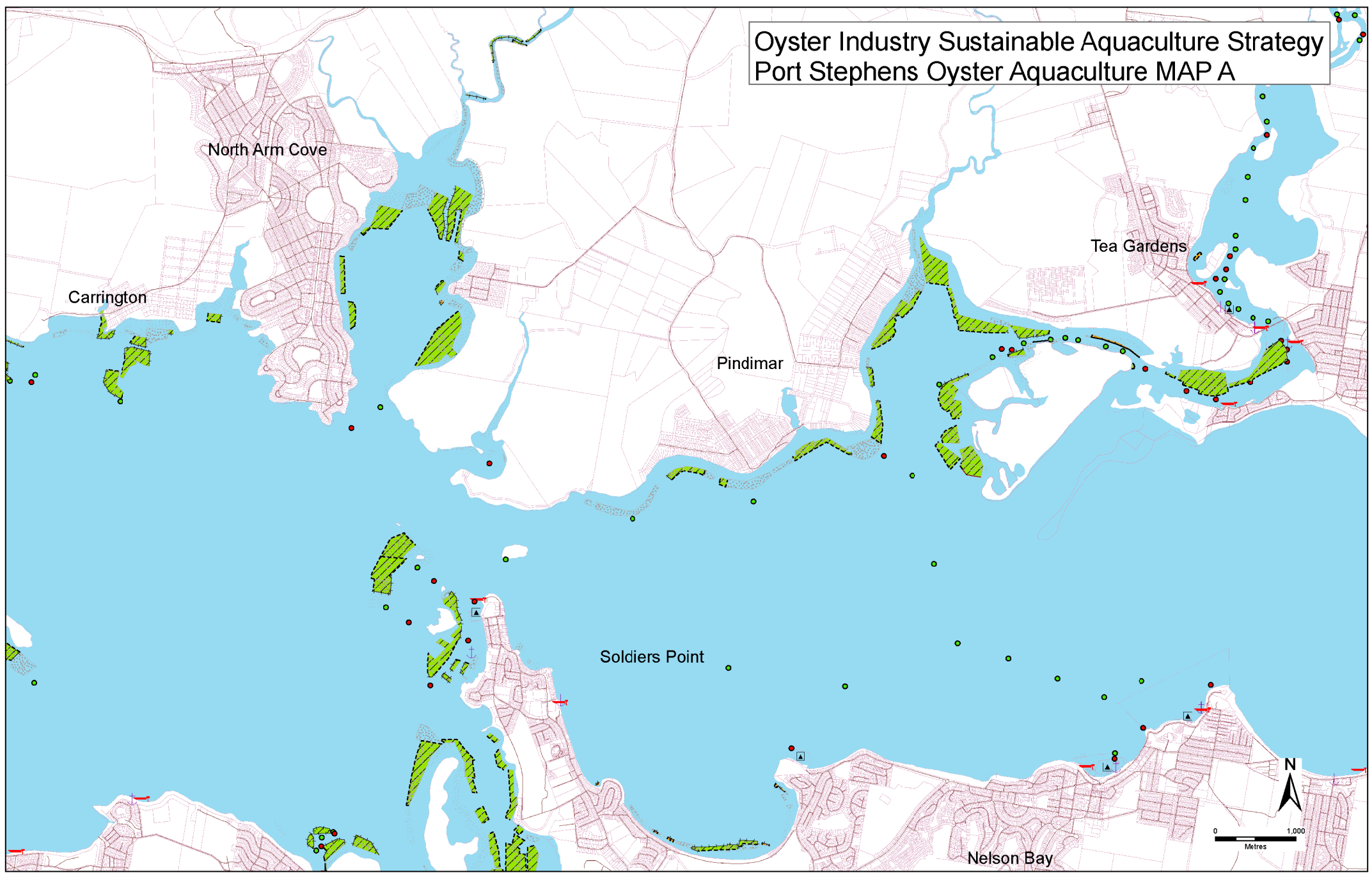


# Oyster Industry Sustainable Aquaculture Strategy Port Stephens Oyster Aquaculture MAP A



**Legend**

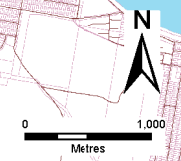
- Priority oyster aquaculture areas
- Current oyster aquaculture leases to be phased out
- Current leased area in National Park Estate
- Leases within Marine Park Boundaries

**Minimum Lease Marker post intervals**

- 10 metre intervals
- 25 metre intervals
- 50 metre intervals
- Special navigation and marking condition
- All other boundaries 100 metre intervals

- Former leases
- Current leases
- Cadastral boundaries (shorelines are indicative only)
- Roads

- Launching ramp
- Marina or boatshed
- Public wharf
- Port marker
- Starboard marker



**NSW DEPARTMENT OF  
PRIMARY INDUSTRIES**  
August 2006

Source: Data from the Department of Lands, NSW DPI, DPWS, and NSW Marine, and the Department of Primary Industries, is provided without warranty or liability. The State of New South Wales, the Department of Primary Industries, its employees, officers, agents or servants are not responsible for the results of any action taken on the basis of the information contained on this map or for any other consequences of an incorrect map. Map only for reference.  
Prepared by SLS under Aquaculture Management Branch, Division of Aquaculture & Fisheries, NSW DPI.