

Paper



We use it everyday, perhaps every hour or two and it's all thanks to trees. Legend has it that paper was invented in 105AD in China. Today, paper products continue to play a big part in our lives.

Meet Ruby. She is nine-years-old and lives in Sydney. Her day in paper goes something like this:

Wake up... toilet paper cereal box milk carton *go to school* tissue excursion note
 maths book science worksheet **lunch** sandwich bag juice carton toilet paper
 craft paper newspaper *go home* toilet paper library book notepad homework
 toilet paper chapter book **Good night** ☾



1 Grow

What does your day in paper look like?

Paper is truly amazing. Made from trees, all it takes to grow is sun, soil, nutrients and water. Here's how we turn a seedling into paper.

Did you know?

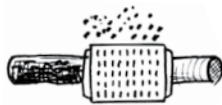
Hardwood pulp from trees such as eucalypts, makes smooth paper which is good for writing but tears easily.

Did you know?

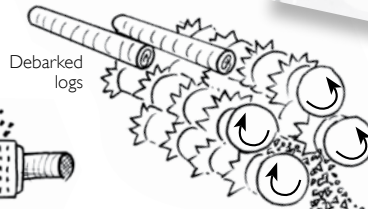
Softwood pulp, from trees such as pines, makes rough but strong paper.



2 Harvest

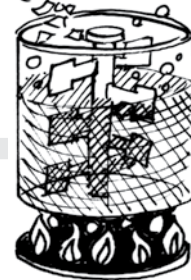


3 De-bark



4 Chip

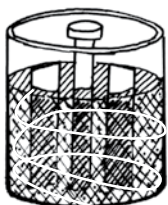
5 Pulp



Wood is made up of small cellulose fibres, bound together by a glue-like substance called lignin. Pulping separates these fibres

Woodchips are cooked into pulp

6 Refine

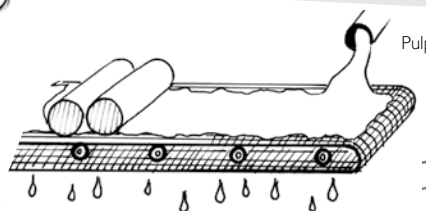


Refining roughens the surface of the pulp fibres so they will cling together when formed into a sheet of paper

7 Blend

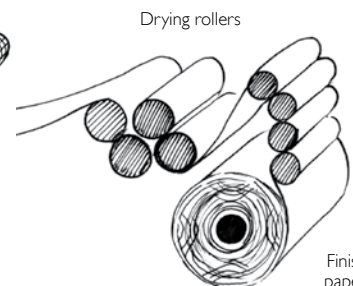


8 Form

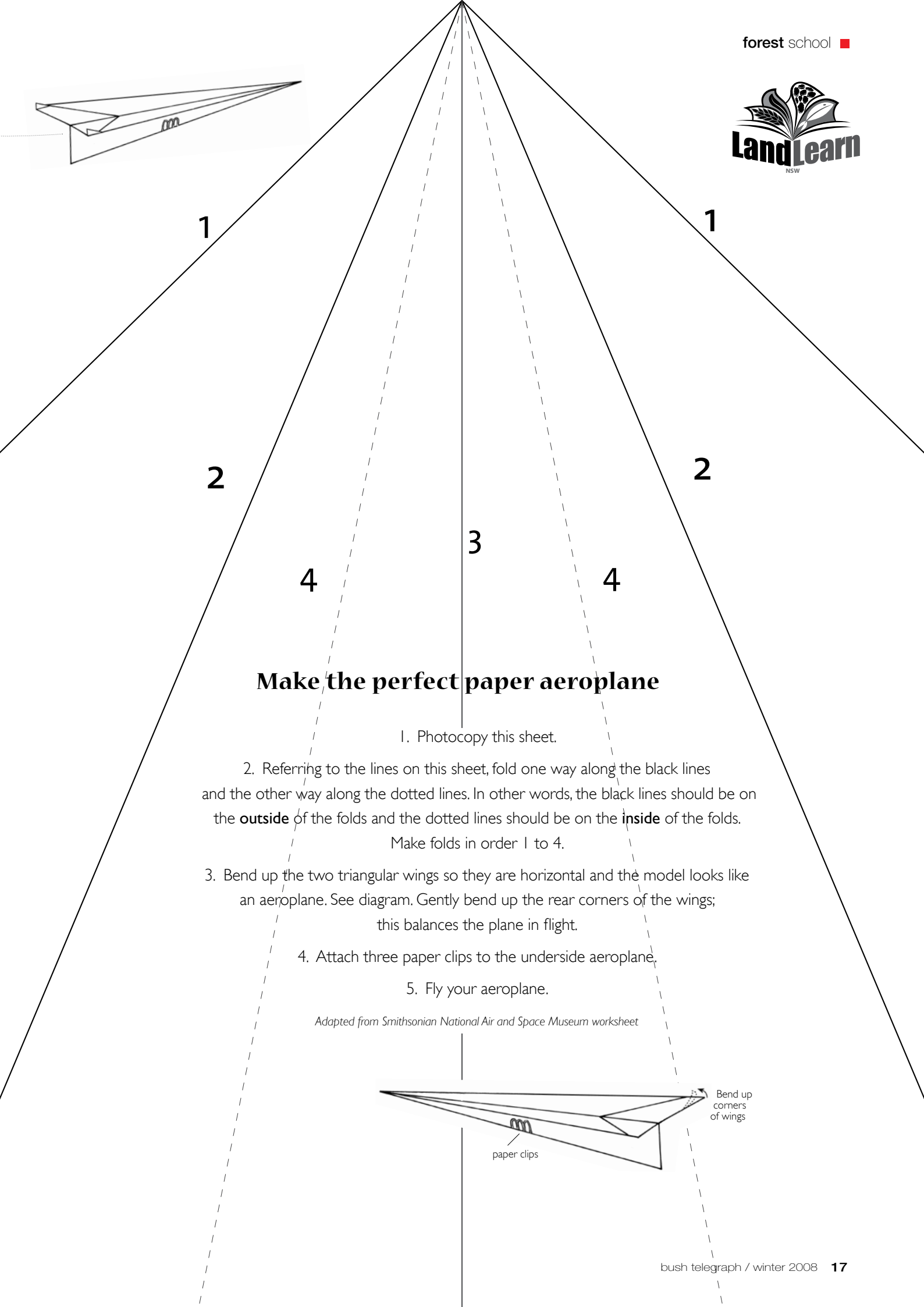
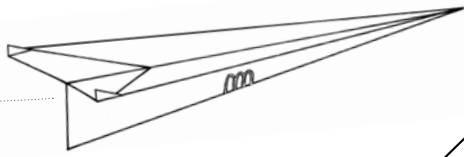


The pulp is fed onto a fine mesh screen and squeezed through rollers to remove the water

9 Dry & Roll



Finished paper



Make the perfect paper aeroplane

1. Photocopy this sheet.
2. Referring to the lines on this sheet, fold one way along the black lines and the other way along the dotted lines. In other words, the black lines should be on the **outside** of the folds and the dotted lines should be on the **inside** of the folds.
Make folds in order 1 to 4.
3. Bend up the two triangular wings so they are horizontal and the model looks like an aeroplane. See diagram. Gently bend up the rear corners of the wings;
this balances the plane in flight.
4. Attach three paper clips to the underside aeroplane.
5. Fly your aeroplane.

Adapted from Smithsonian National Air and Space Museum worksheet

