



NSW DEPARTMENT OF  
PRIMARY INDUSTRIES

## **Betting On Rain Managing Seasonal Risk in Western NSW - Readers' Note**

---

This document is part of a larger publication. The remaining parts and full version of the publication can be found at:

<http://www.dpi.nsw.gov.au/publications?a=63667>

Updated versions of this document can also be found at the above web address.

This document is subject to the disclaimers and copyright of the full version from which it is extracted. These disclaimers and copyright statements are available in the appropriate document at the above web address.

## PROBABILITY OF EXCEEDING MEDIAN PASTURE GROWTH

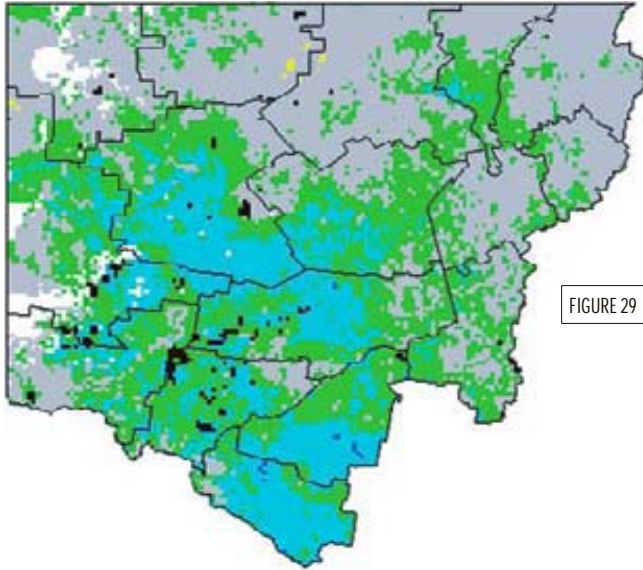


FIGURE 29	CURRENT MONTH	August
	OUTLOOK PERIOD	October, November, December
	SOI PHASE	4

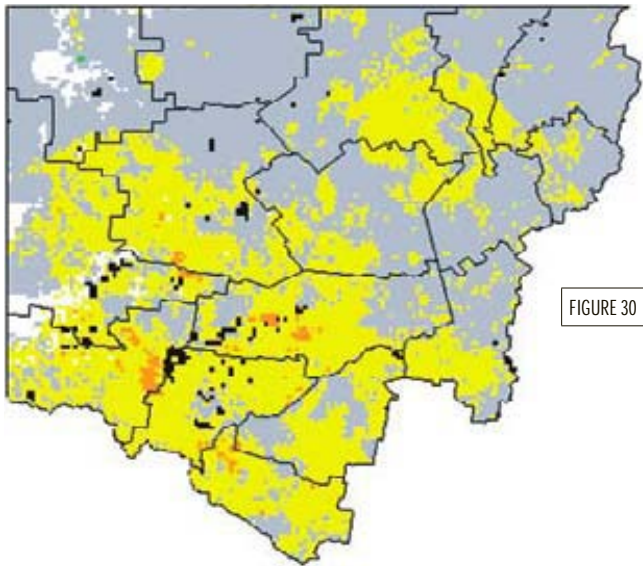
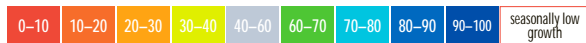


FIGURE 30	CURRENT MONTH	August
	OUTLOOK PERIOD	October, November, December
	SOI PHASE	5



Experimental prototypes from AussieGRASS ([www.LongPaddock.qld.gov.au](http://www.LongPaddock.qld.gov.au)) produced for the Land Water and Wool Managing Climate Variability Project.

## PROBABILITY OF EXCEEDING MEDIAN PASTURE GROWTH

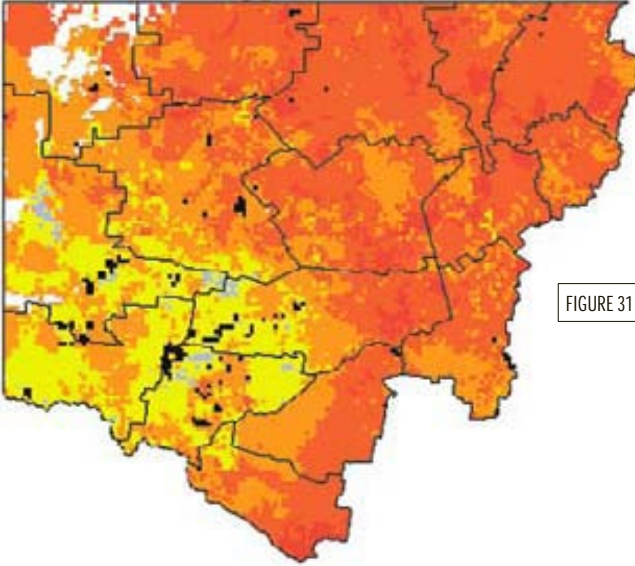


FIGURE 31	CURRENT MONTH	September
	OUTLOOK PERIOD	September, October, November
	SOI PHASE	1

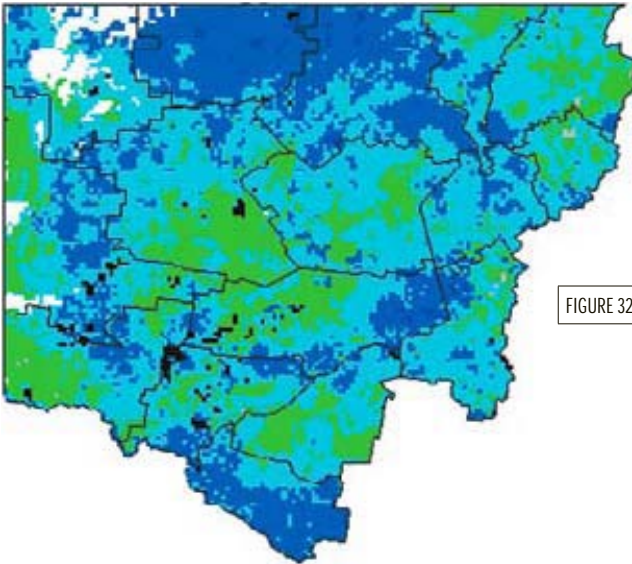


FIGURE 32	CURRENT MONTH	September
	OUTLOOK PERIOD	September, October, November
	SOI PHASE	2



Experimental prototypes from AussieGRASS ([www.LongPaddock.qld.gov.au](http://www.LongPaddock.qld.gov.au)) produced for the Land Water and Wool Managing Climate Variability Project.

## PROBABILITY OF EXCEEDING MEDIAN PASTURE GROWTH

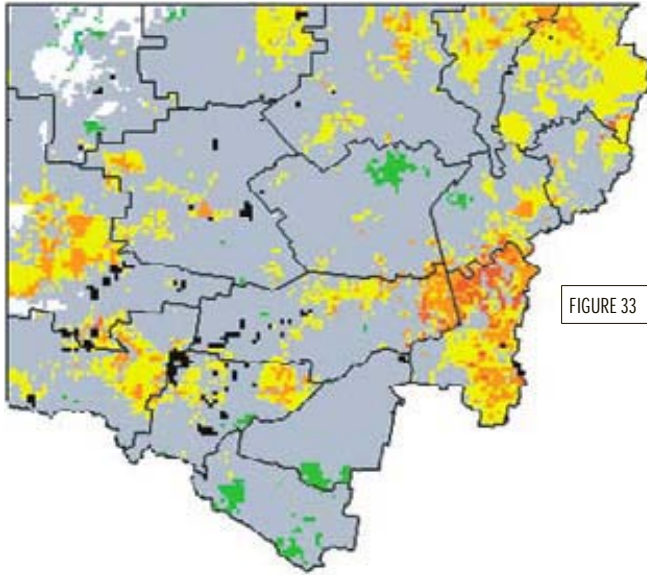


FIGURE 33	CURRENT MONTH	September
	OUTLOOK PERIOD	September, October, November
	SOI PHASE	3

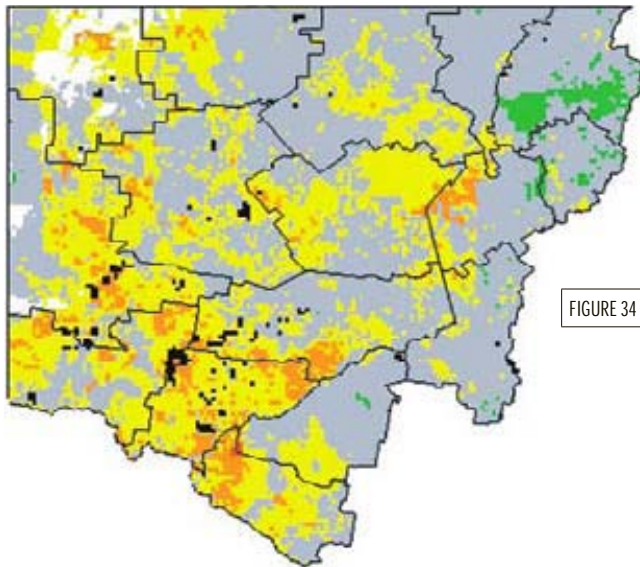


FIGURE 34	CURRENT MONTH	September
	OUTLOOK PERIOD	September, October, November
	SOI PHASE	4



Experimental prototypes from AussieGRASS ([www.LongPaddock.qld.gov.au](http://www.LongPaddock.qld.gov.au)) produced for the Land Water and Wool Managing Climate Variability Project.

## PROBABILITY OF EXCEEDING MEDIAN PASTURE GROWTH

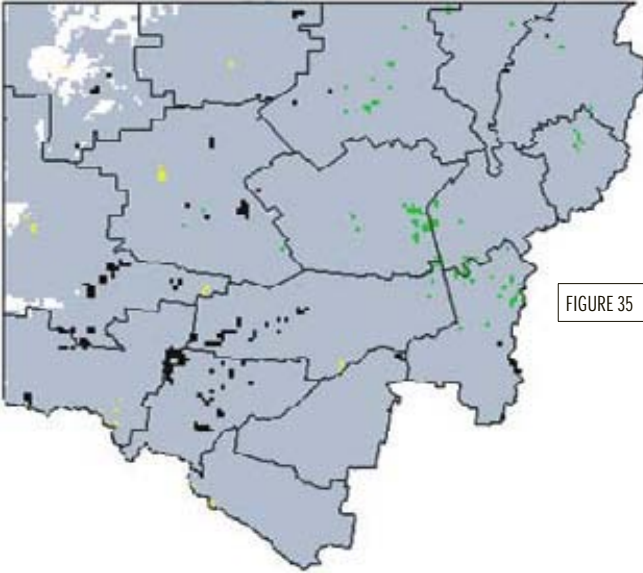


FIGURE 35	CURRENT MONTH	September
	OUTLOOK PERIOD	September, October, November
	SOI PHASE	5

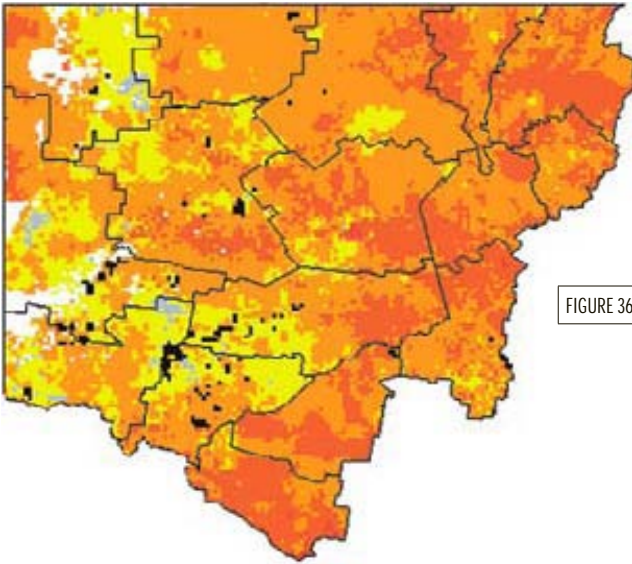
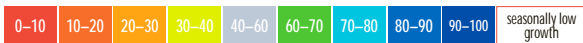


FIGURE 36	CURRENT MONTH	September
	OUTLOOK PERIOD	October, November, December
	SOI PHASE	1



Experimental prototypes from AussieGRASS ([www.LongPaddock.qld.gov.au](http://www.LongPaddock.qld.gov.au)) produced for the Land Water and Wool Managing Climate Variability Project.

## PROBABILITY OF EXCEEDING MEDIAN PASTURE GROWTH

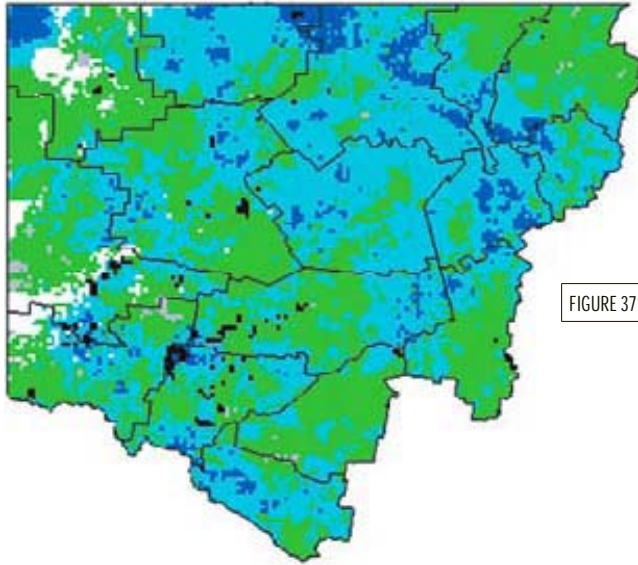


FIGURE 37	CURRENT MONTH	September
	OUTLOOK PERIOD	October, November, December
	SOI PHASE	2

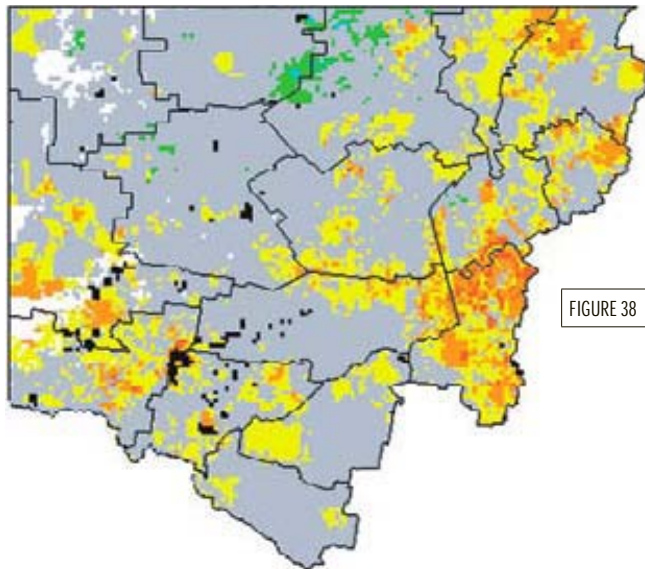


FIGURE 38	CURRENT MONTH	September
	OUTLOOK PERIOD	October, November, December
	SOI PHASE	3



Experimental prototypes from AussieGRASS ([www.LongPaddock.qld.gov.au](http://www.LongPaddock.qld.gov.au)) produced for the Land Water and Wool Managing Climate Variability Project.

## PROBABILITY OF EXCEEDING MEDIAN PASTURE GROWTH

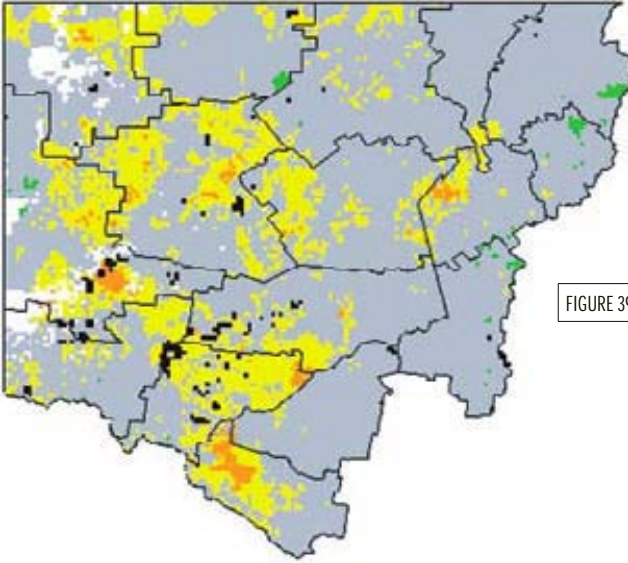


FIGURE 39	CURRENT MONTH	September
	OUTLOOK PERIOD	October, November, December
	SOI PHASE	4

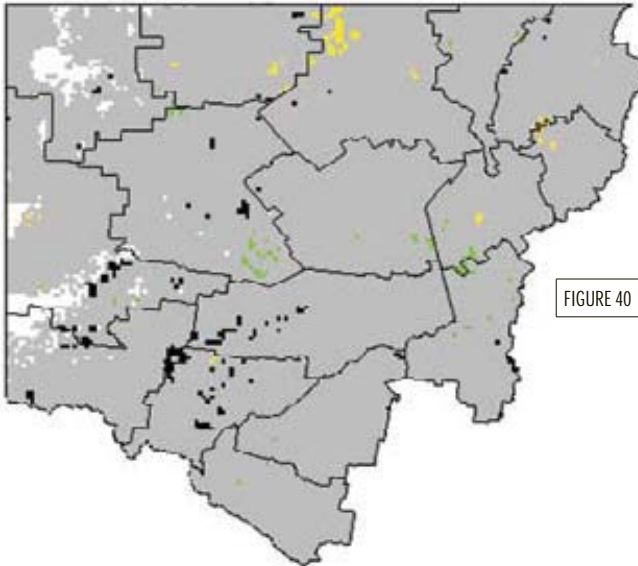


FIGURE 40	CURRENT MONTH	September
	OUTLOOK PERIOD	October, November, December
	SOI PHASE	5



Experimental prototypes from AussieGRASS ([www.LongPaddock.qld.gov.au](http://www.LongPaddock.qld.gov.au)) produced for the Land Water and Wool Managing Climate Variability Project.

## PROBABILITY OF EXCEEDING MEDIAN PASTURE GROWTH

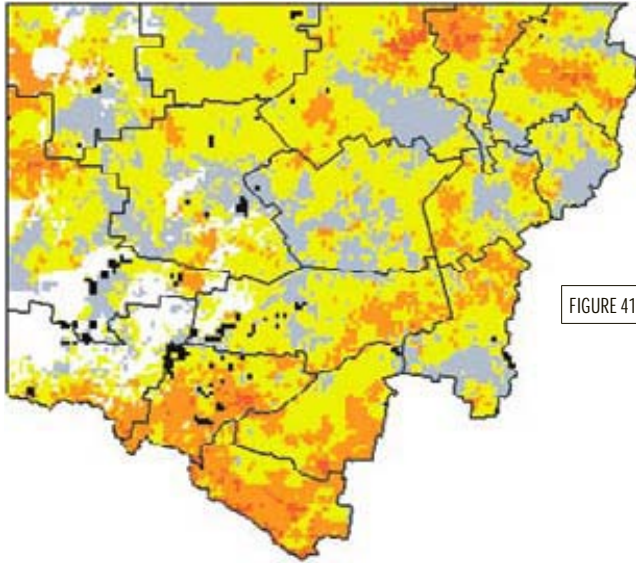


FIGURE 41	CURRENT MONTH	September
	OUTLOOK PERIOD	November, December, January
	SOI PHASE	1

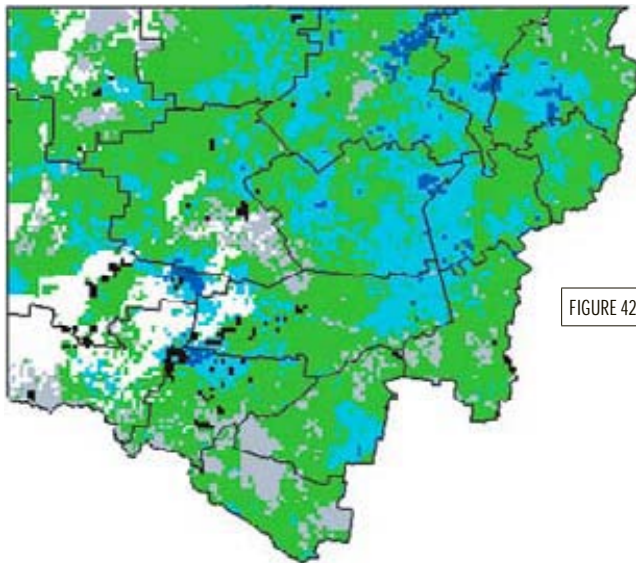


FIGURE 42	CURRENT MONTH	September
	OUTLOOK PERIOD	November, December, January
	SOI PHASE	2



Experimental prototypes from AussieGRASS ([www.LongPaddock.qld.gov.au](http://www.LongPaddock.qld.gov.au)) produced for the Land Water and Wool Managing Climate Variability Project.

## PROBABILITY OF EXCEEDING MEDIAN PASTURE GROWTH

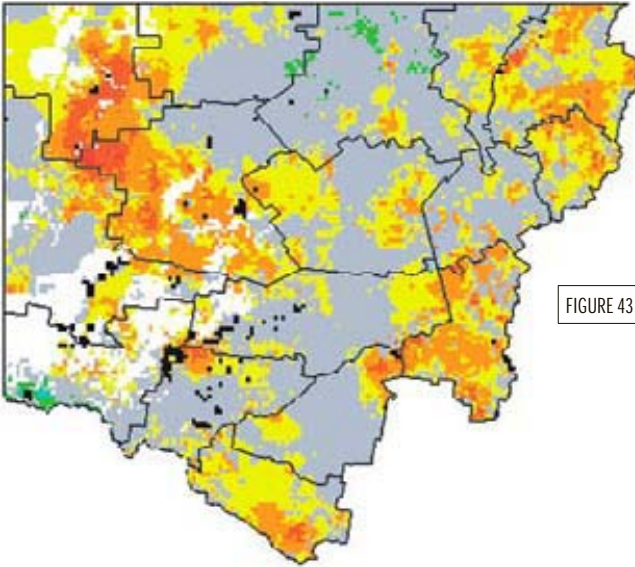


FIGURE 43	CURRENT MONTH	September
	OUTLOOK PERIOD	November, December, January
	SOI PHASE	3

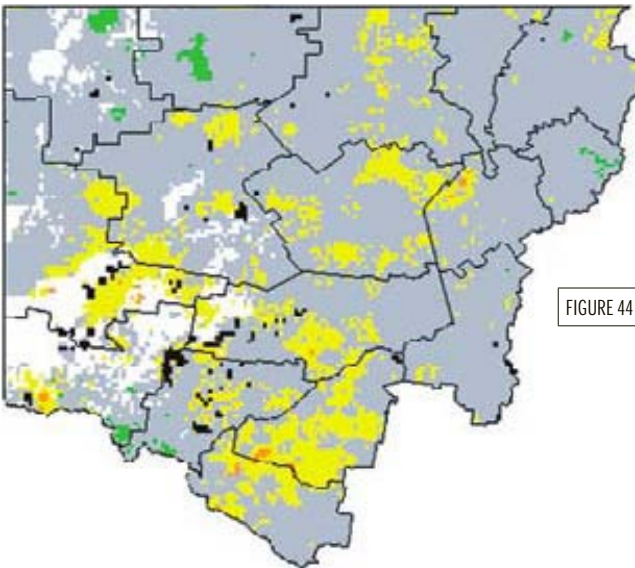
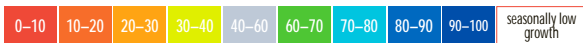


FIGURE 44	CURRENT MONTH	September
	OUTLOOK PERIOD	November, December, January
	SOI PHASE	4



Experimental prototypes from AussieGRASS ([www.LongPaddock.qld.gov.au](http://www.LongPaddock.qld.gov.au)) produced for the Land Water and Wool Managing Climate Variability Project.

## PROBABILITY OF EXCEEDING MEDIAN PASTURE GROWTH

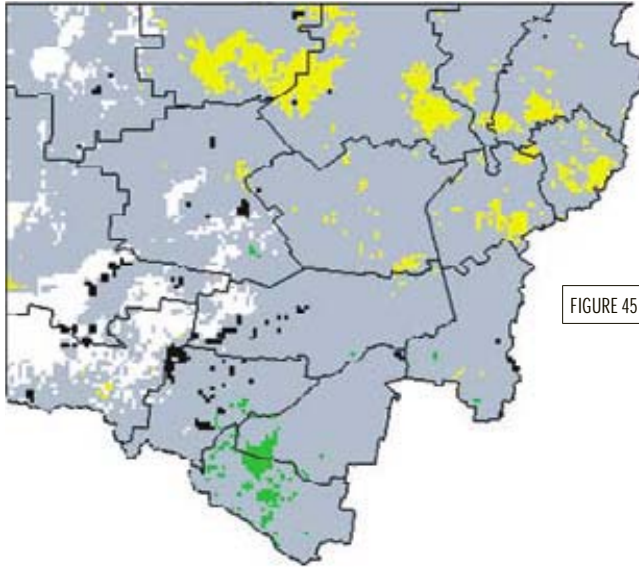


FIGURE 45	CURRENT MONTH	September
	OUTLOOK PERIOD	November, December, January
	SOI PHASE	5



Experimental prototypes from AussieGRASS ([www.LongPaddock.qld.gov.au](http://www.LongPaddock.qld.gov.au)) produced for the Land Water and Wool Managing Climate Variability Project.

