



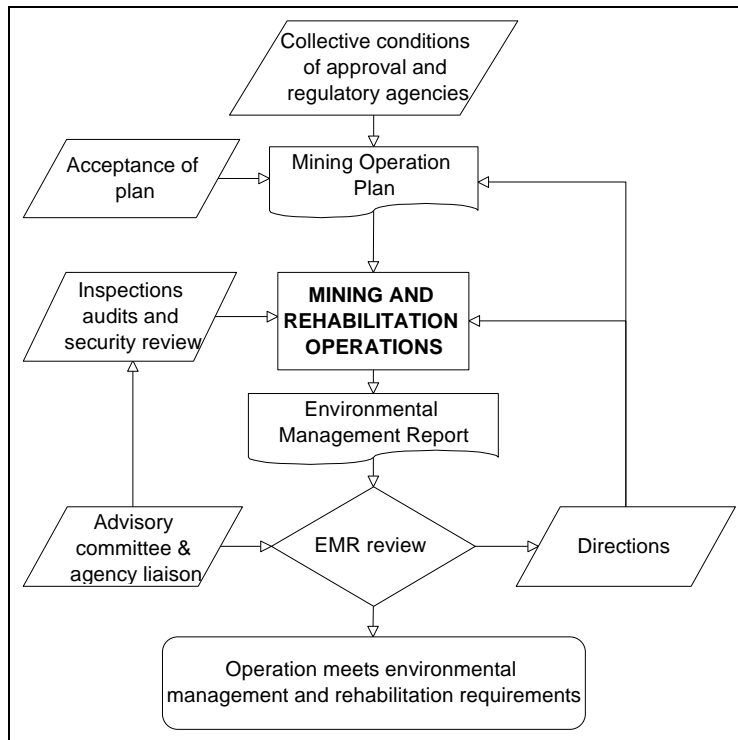
Environmental Management Principles

MINING OPERATIONS

CONTENTS

		Page
	Flow Chart of Processes	1
1	Introduction	1
2	Environmental and Rehabilitation Outcomes	2
3	Mining Operations Plan	2
4	Environmental Management Report	2
5	Environmental Responsibility	2
6	Surface and Underground Water	2
7	Sensitive Issues	2
8	Rehabilitation and Security Bonds	3
9	Safety	3
10	Inspection and Audit	3
11	References	3

FLOW CHART OF PROCESSES



1. INTRODUCTION

The New South Wales Government will apply the following environmental principles to all mining operations.

Lease holders must be familiar with and comply with all environmental and heritage legislation applying to their activities as well as industry codes and best practice guidelines. Document EDG 5 of this series includes a bibliography of guides and relevant references.

2. ENVIRONMENTAL AND REHABILITATION OUTCOMES

All mining activities must be conducted in a manner that will achieve agreed environmental outcomes. These outcomes must meet requirements of development consent, mining lease conditions, this policy, and other licences and approvals.

3. MINING OPERATIONS PLAN

All operations must be carried out in accordance with a Mining Operations Plan (MOP) that has been reviewed by, and is accepted by officers of the Department of Mineral Resources. The MOP documents site activities and progress towards the required environmental and rehabilitation outcomes

Compliance with a MOP does not excuse a failure to achieve required environmental outcomes.

4. ENVIRONMENTAL MANAGEMENT REPORT.

Each mine site must submit an Annual Environmental Management Report (AEMR). This report provides the means of measuring progress towards the attainment of environmental and rehabilitation outcomes.

The AEMR will co-ordinate government environmental reporting requirements by including reports to other agencies and will facilitate a whole-of-government approach to AEMR review.

Following review, the leaseholder may be directed to undertake or modify operations, implement remedial action or carry out supplementary studies to ensure that operations are conducted in accordance with conditions of the lease, and sound mining and environmental practice.

5. ENVIRONMENTAL AND REHABILITATION RESPONSIBILITY

The manager of each mine site will nominate an officer to take responsibility for site environmental and rehabilitation management and be the key person for contact on environmental matters.

6. SURFACE AND UNDERGROUND WATERS

All site water and diverted water flows must apply current best practice to avoid erosion, excessive siltation or flooding of surface channels, and surface or groundwater contamination.

7. SENSITIVE ISSUES

Specific attention may need to be given to the issues of particular environmental sensitivity identified by the public, other agencies or special interest groups.

Strategies or plans must be implemented to minimise impacts on flora, fauna and habitat, including the protection of threatened species.

Conservation of Aboriginal, archaeological, historical and geological sites of significance must be in accordance with National Parks and Wildlife guidelines.

- conserving any Aboriginal relic or declared Aboriginal place unless a consent or other authority has been issued,
- taking all precautions in excavating or otherwise disturbing land of any Aboriginal relic or declared Aboriginal place,
- ceasing works that might further disturb relics, if relics not covered by a previous consent are discovered, and
- reporting any discovery

An authority from the National Parks and Wildlife Service is required before Aboriginal places or relics can be knowingly disturbed.

8. REHABILITATION AND SECURITY BONDS

Rehabilitation issues and the manner in which agreed post mining rehabilitation outcomes can be demonstrably achieved must be considered as an integral part of mine planning and operations.

A security bond will be imposed to ensure rehabilitation outcomes will be met.

See Rehabilitation and Mine Closure for further detail.

9. SAFETY

Mine site operations, and if necessary active shafts, adits, open cuts and other dangerous excavations and process areas within the mine site will be fenced and appropriately signed to prevent unauthorised stock, or fauna access. All operations must be conducted so as to not cause any danger to persons, stock or fauna. Fire control plans must be in place and approved by the local fire authority

10. INSPECTION AND AUDIT

Environmental Officers of the Department may conduct site inspections and audits to verify compliance with lease conditions and with this policy.

As a result of an inspection or audit the Department may direct the leaseholder to undertake or modify operations, or to carry out remedial action or supplementary studies to ensure that operations are conducted in accordance with conditions of the lease and sound mining and environmental practice.

11. REFERENCES

Environmental Management System document EDG08 provides a list of legislation, reference codes and best practice guidelines to enable adherence to policies and guidelines for exploration and mining activities.

For further information and contact details see www.dpi.nsw.gov.au/minerals
Telephone (02) 4931 6605 Email environment@dpi.nsw.gov.au