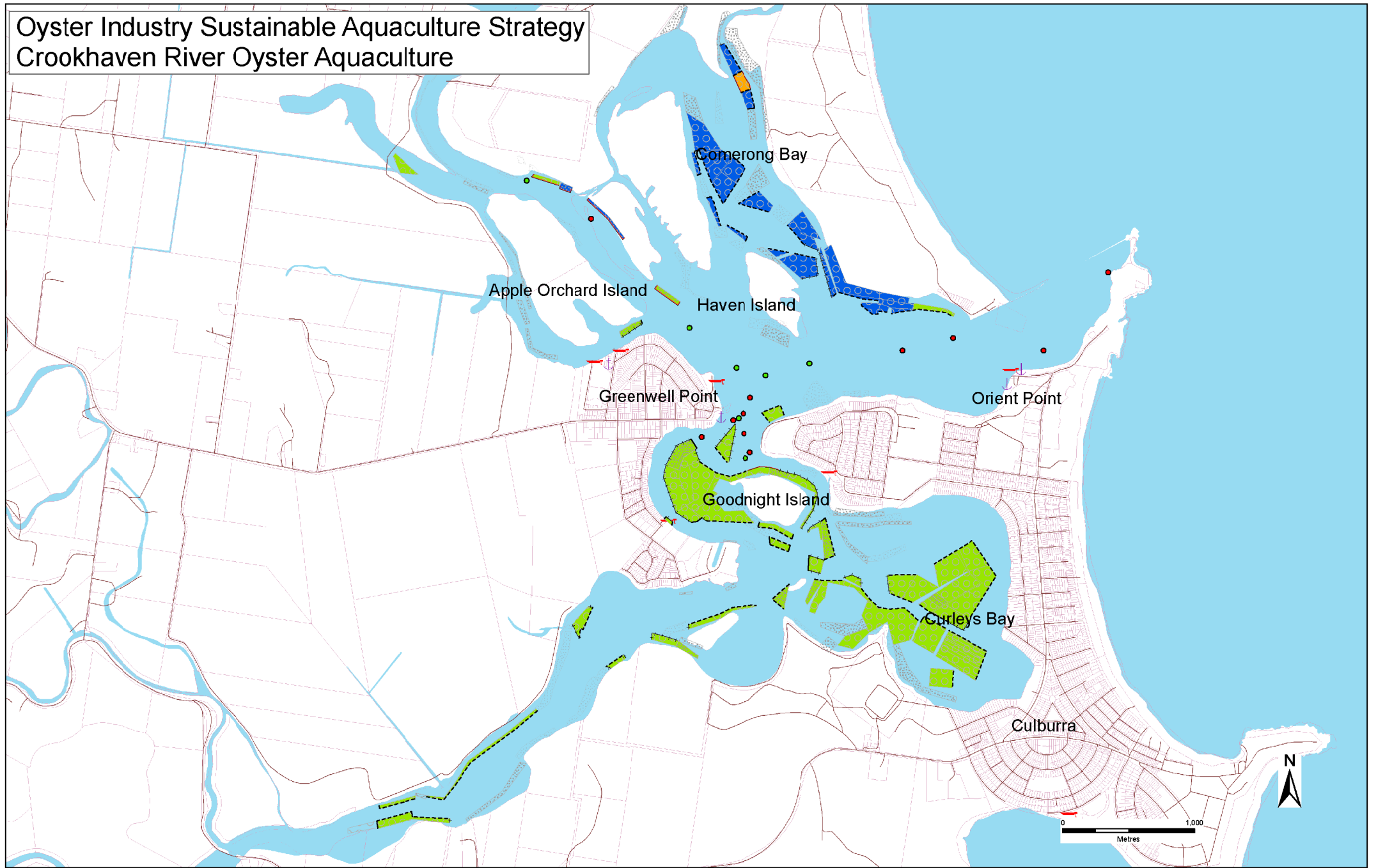


# Oyster Industry Sustainable Aquaculture Strategy

## Crookhaven River Oyster Aquaculture



### Legend

- |  |  |   |                    |
|--|--|---|--------------------|
| Priority oyster aquaculture areas                        | <b>Minimum Lease Marker post intervals</b> | Former leases   | Launching ramp     |
| Current oyster aquaculture leases to be phased out       | 10 metre intervals                         | Current leases  | Marina or boatshed |
| Current leased area in National Park Estate              | 25 metre intervals                         | Cadastral boundaries (shorelines are indicative only) | Public wharf       |
| Leases within Marine Park Boundaries                     | 50 metre intervals                         | Roads   | Port marker        |
| Current lease area within Merimbula Airport Jurisdiction | Special navigation and marking condition   |   | Starboard marker   |
|  | All other boundaries 100 metre intervals   |   |                    |



NSW DEPARTMENT OF  
PRIMARY INDUSTRIES

August 2006

Source: Data from the Department of Lands, NSW DPI, DPWS, and NSW Marine. Map data from: Geospatial Catalogue of Australia (GCA) ORF Mapping Order of Australia (MOA) © 2006. The State of New South Wales, the Department of Primary Industries, its employees, officers, agents or servants are not responsible for the result of any action taken on the basis of the information contained in this map or for any other consequences or damages that may result from its use. Prepared by GIS Centre, Aquaculture Management Branch, Division of Agriculture & Fisheries, NSW DPI.