



Flameproof Rubber Tyred Vehicles

Technical Bulletin

Bulletin Number: TB1007

Date: 18/10/2010

Subject: Installation of Exhaust Conditioner Isomounts

Purpose

To inform the industry of the correct procedure for installing the Isomounts used for mounting the exhaust conditioners to Sandvik Loaders and Shield Haulers.

Applicable to

Sandvik 130, 913, 913-6, LS160 (former name ED6), LS170 (former name ED7), LS170L (former name ED7LP), LS171, LS190 (former name ED10), LS191, LS151 Loaders.

Sandvik 936, TS350 (former name ED25), TS390 (former name ED30), TS490 (former name ED40) Shield Haulers.

Description

The isomounts are used to mount the exhaust conditioners to the vehicles and provide vibration isolation. They feature a height adjuster and they are mounted to the frame via a mounting base. Failure to securely fasten the exhaust conditioner to the Isomounts may result in excessive conditioner movement and exhaust component damage.

When fastening the exhaust conditioner to the Isomounts nyloc nuts and plain washers should be used to minimise the likelihood of the connection vibrating loose during operation. Figure 1 shows the recommended mounting configuration utilising a M12 nyloc nut and M12 large flat washer on either side of the exhaust conditioner bracket.

Recommendations

Sandvik recommends a check of all exhaust conditioner mounts for correct installation at the next service period.

When removing and reinstalling the exhaust conditioner install new washers and nyloc nuts and fasten as shown in Figure 1. Also check the Isomounts for damage and degradation and replace when necessary.

The new isomount assembly (A2U900-191929) will be sold preassembled as per Figure 2.

Note: The recommended centre bolt/nut tightening torque is 45-50 Nm.

Ordering Instructions

The isomount that is used in the listed vehicles is Sandvik part number A2U900-191929.

Contact

Contact your Sandvik representative for further information or any questions you may have.

Technical Bulletin

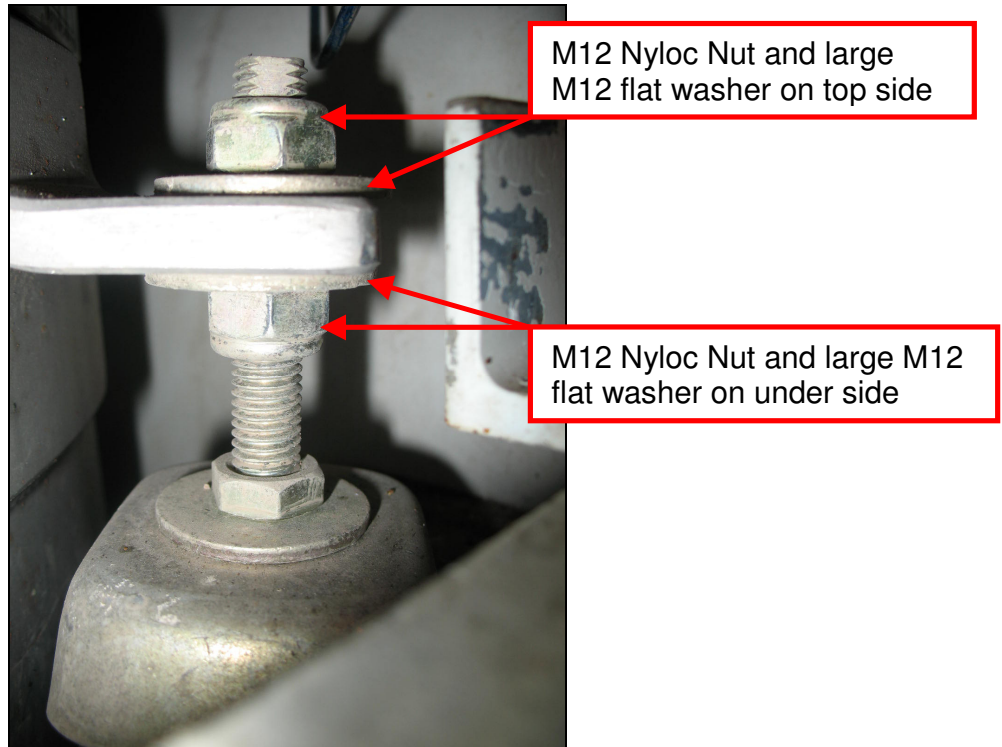


Figure 1: Recommended installation of Isomounts

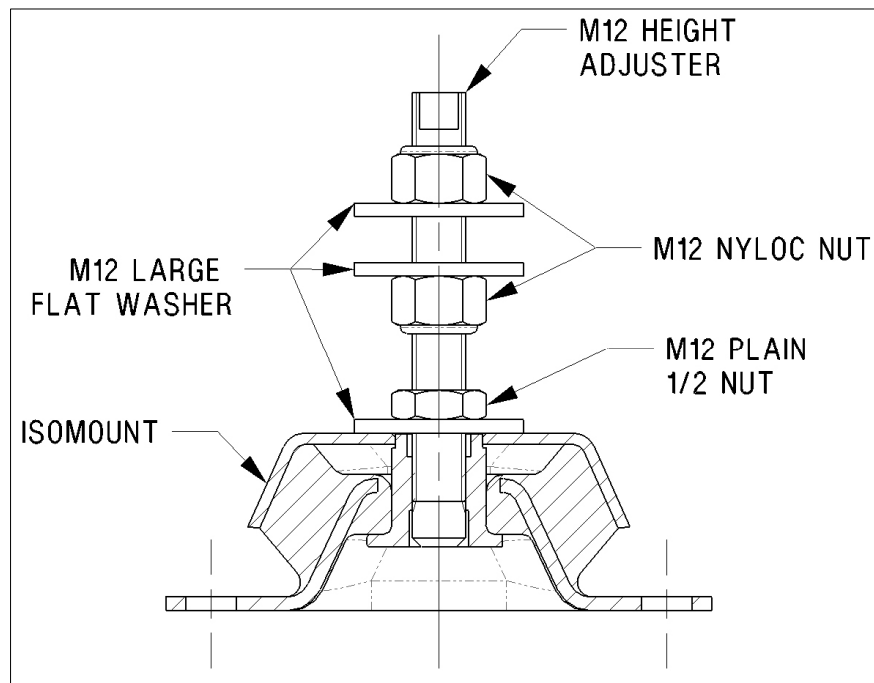


Figure 2: Section through Isomount assembly