



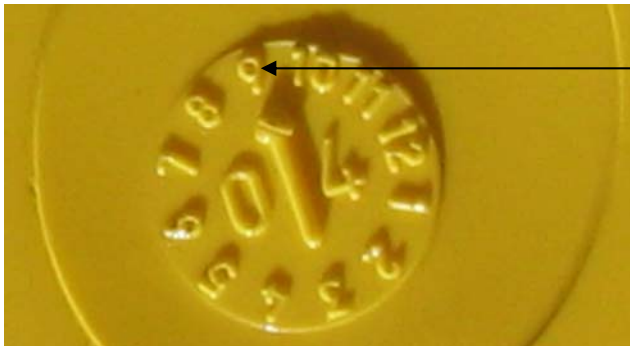
SAFETY BULLETIN

HARD HAT EXPIRY DATE

Safety helmets have a "**use by date**" or a "**working life**". Section 3 of Australian Standard AS/NZ 1800:1998 code details the "Care and Maintenance of Occupational Protective Helmets", and Section 3.4 covers the "Working Life".

A **3 year replacement date** has been adopted as an Australian Standard.

Each helmet, when manufactured, has a year and month of manufacture stamped onto the inside of the shell near the peak for easy reading. The arrow in the stamp points to the month and the year overlays the arrow. For example below, the arrow points to 9 and the number is 04 means that the helmet was manufactured in September 2004.



Note the year is 04 and the arrow points to 9, meaning the hat was manufactured in September 2004

If the helmet has been used regularly it should be replaced after 3 years from the **date of issue**. The date of issue should be marked on an additional sticker on the inside of the helmet at the back of the shell. The date of issue is not necessarily the same as the date of manufacture

The harness/headband has a life of 2 years and should be replaced at an earlier date.

Problems arise when:

1. The **date of issue** is not marked on the additional sticker
2. The sticker has lifted off the helmet.

If a "sticky" monogram, or sticker is used rather than painted (embossed) logo placed on the helmet at the time of production by the manufacture, beware, as

some of the glues used for the sticky label react with the helmet shell and the hardness of the hat may be compromised.

Where there may be confusion it is best to use the date of manufacture as the benchmark because it is permanently stamped on the inside of the helmet leaving little room for error.

In essence, if a helmet has been issued before March 2003 it is out of date and should be replaced.

This is where the date of manufacture is located on the hardhat



In offices, safety helmets are often issued as part of an *Emergency Evacuation Plan*. These helmets are also governed by the "use by date" and should be inspected regularly.

If a helmet has been stored in direct sunlight or sitting on a shelf exposed to heat (inside a locked car for example), the quality of the helmet will have deteriorated. There are instances of helmets shattering when used after being stored in direct sunlight for extended periods of time.

RECOMMENDATIONS

1. Mines should develop a system to ensure that safety helmets and harnesses are replaced on a regular basis.
2. Mines should ensure that employees are aware of the need to protect safety helmets from sunlight, heat and chemicals

Signed



Rob Regan
DIRECTOR
MINE SAFETY OPERATIONS BRANCH
NSW DEPARTMENT OF PRIMARY INDUSTRY

View more safety alerts at www.minerals.nsw.gov.au. If you would like to receive safety alerts by email, send your details to safetyalert@minerals.nsw.gov.au