



# Forests and forestry

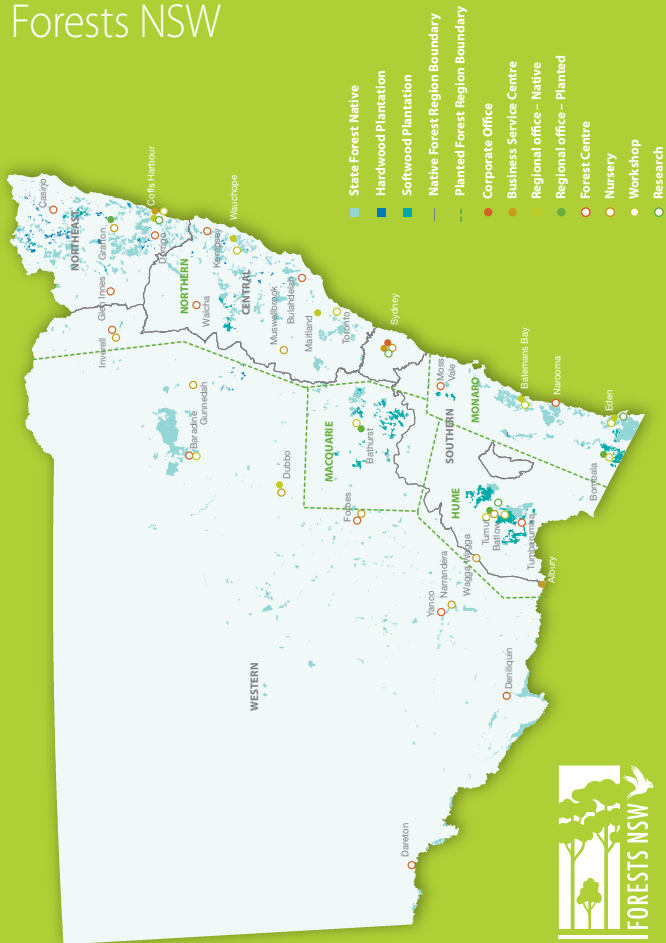
Facts and figures  
**2007-08**

[www.dpi.nsw.gov.au](http://www.dpi.nsw.gov.au)



NSW DEPARTMENT OF  
PRIMARY INDUSTRIES

# Forests NSW



## Our organisation

Forests NSW is a public trading enterprise within NSW Department of Primary Industries (NSW DPI), responsible for the sustainable management of more than 2 million hectares of multiple-use native forests and an expanding estate of hardwood and softwood planted forests.

Forests NSW is working to be the best and safest commercial forest manager in Australasia.

### Forests NSW key result areas are:

- Focus on excellence in profitable and sustainable forest management
- Organisational efficiency making optimal use of our assets
- Revenue growth
- Cost reductions
- Simplification of the way we work.

## NSW DPI's vision

Profitable, adaptive and sustainable primary industries building vibrant communities.

### NSW DPI's key result areas are:

- Strong economic performance of primary industries
- Appropriate access to and wise management of natural resources
- Safe, healthy and biosecure industries
- A strong voice for primary industries
- Excellence in people, innovation and service delivery.

# Forest statistics

Description	Australia	NSW	Forests NSW
Total land area (million ha)	770	80	2.5
Total population (million)	21	7	n/a
Forests as a percentage of land area	19%	33%	>99%
Total forest area (million ha)	149	26.5	2.5
Native forest area (million ha) <sup>1</sup>	147	26.2	2.2
Area of forest not legally restricted from timber harvesting	113	19.9	2.0
Native forest area in formal nature conservation reserves (million ha)	23	5.1	0.5
multiple-use public native forests (million ha)	9.4	2.0	
Area of native production forest harvested annually <sup>3</sup>	<1%	n/r	2.8%
Plantation forest area (million ha)	1.97	0.34	0.27
New area of plantation planted ha/year (average 2002-2006) <sup>2</sup>	60 120	13 645	7 114
Number of people employed in forest product industries	>83 000	>24 000	943
Total exports of wood products	\$2.47 billion	n/r	n/r
Major exports to	Japan (38%), NZ (17%) & China (16%)	n/r	n/r
Total imports of wood products	\$4.40 billion	n/r	n/a
Major imports from	NZ (19%), China (10%) & Indonesia (8%)	n/r	n/a
Forests contribution to GDP	1%	n/r	n/r
Net amount of carbon sequestered (million tonnes) by managed native forests per annum (e-CO) <sup>4</sup>	43.5	n/r	4.2
Value of turnover in forest products industries (billion)	19	n/r	0.3

<sup>1</sup> Includes native forest remnants within planted forest estate for Forests NSW

<sup>2</sup> Australia's Plantations, 2008 Inventory figure for NSW 2007

<sup>3</sup> Forest NSW only removes a proportion of the trees over the harvested areas, except for Cypress pine (26%)

<sup>4</sup> Australian figure from 2005

Sources: DAFF State of the Forests Report 2008, Forests NSW Seeing Report 2007-08, Australian Bureau of Statistics, DAFF National Plantation Inventory - 2008

n/a: Not applicable  
n/r: Not reported

# Economic benefits

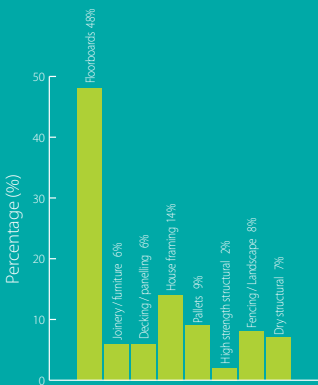
- 1.4 million hectares of native State forest available for timber harvesting
- Over 7 700 hectares of new softwood plantation established
- 2.9 million m<sup>3</sup> of sawlogs and 1.8 million tonnes of pulpwood harvested
- More than 690 000 greenhouse gas abatement certificates created, representing the equivalent number of tonnes of CO<sub>2</sub> stored
- 100% of eligible plantations accredited for carbon trading
- \$24 400 profit per employee

## Timber product

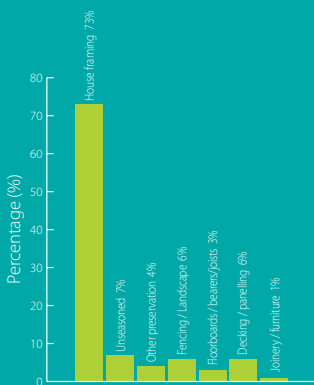
Forests NSW main timber products are:

Hardwood	17 000 m <sup>3</sup> /pa veneer
	805 000 m <sup>3</sup> /pa sawlogs
	606 000 tonnes/pa pulpwood
Softwood	2 100 000 m <sup>3</sup> /pa sawlogs
	1 164 000 tonnes/pa pulpwood

### Hardwood timber products



### Softwood timber products



## Forests NSW major customers

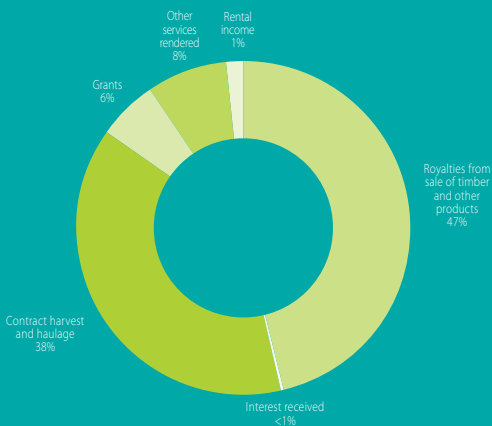
Manufacture area	Customer	Products/Services
Plywood	Ausply, Big River Timbers and Carter Holt Harvey	Plywood flooring & stairs, structural bracing, Formply (concrete construction) and external cladding
Major softwood sawmillers	Auswest, Carter Holt Harvey, Colenden, Dale & Mayers, Highland Pine, Hyne & Son, Penrose Pine, Tarmac and Willmott Forest Products	Structural softwood timber for dwelling construction and renovation markets, internal joinery (e.g. windows and architraves) and furniture timbers, landscape timbers, treated softwood poles and treated decking
MDF and particleboard	Carter Holt Harvey and Monsbent	Medium Density Flooring and particleboard products such as flooring, cabinets, bench tops and furniture
Softwood preservation	Pacpine, Penrose Pine and Willmott Timbers	Treated timber for outdoor applications such as decks, pergolas and landscape timbers
Pulp and paper	Midway, Sawmillers Export Pty Ltd, Norske Skog, Pentarch, Queensland Commodity Exports, South East Fibre Exports and Visy	Newsprint, writing paper, cardboard, tissues and paper towels
Major hardwood sawmillers	Australian Solar Timbers, Big River Timbers, Blue Ridge Hardwoods, Boral, Coffs Harbour Hardwoods, Davis & Herbert, Gunnedah Timbers, Grants Holdings, Gulpa Sawmill, Hurfords, ITC Timber, Koppers, Notaras J & Sons and Thora	Kiln dried and green structural timber, strip flooring, furniture and joinery timber, bridge and engineering timber products, power poles, plywood products and external cladding decking
Investors	Agriwealth, ST Microelectronics and TEPCO	Plantation investment
Utilities and infrastructure	Country Energy, Crown Castle, Optus, Telstra and Vodafone	Telecommunications and electricity supplier

# Forests NSW finances

	2007-08 \$'000	2006-07 \$'000	2005-06 \$'000	2004-05 \$'000	2003-04 \$'000
Revenue	293 795	270 550	259 747	247 546	240 634
Operating profit	42 646	28 037	31 116	36 819	37 860
Significant items and biological assets revaluation	75 005	-166 357	-19 696	-29 163	17 392
Operating profit (before tax)	117 651	-138 320	11 420	7 656	55 252
Distribution to Government	1 000	16 000	26 322	32 544	13 096
Capital expenditure	34 904	45 039	31 451	31 531	36 315

Forests NSW productivity measures	2007-08	2006-07	2005-06	2004-05	2003-04
Employee numbers (30 June)	943	1 045	1 069	1 039	1 112
Timber sales by volume (m <sup>3</sup> )	4 797 875	4 659 225	4 414 591	4 338 255	4 489 397
Timber sales per employee (m <sup>3</sup> )	5 088	4 458	4 130	4 175	4 037
Timber sales/employee (\$'000)	147	123	126	123	118

## Revenue sources



## Social benefits

- 943 people directly employed by Forests NSW, with more than 6 000 forest-dependent jobs and 14 000 indirect employment
- \$7.58 million spent on research
- 786 regional forums attended by Forests NSW staff
- 104 meetings health and safety meetings staged
- More than 31 000 public enquiries addressed
- More than \$120 000 in corporate sponsorships and support
- 4 171 people participating in programs at Cumberland State Forest
- 141km of dedicated mountain bike tracks developed & maintained

### Forest sector employment dependant on State forests

Harvesting / Haulage	1 087
Primary processing	4 483
Apiary	352
Grazing	530
Eco-tourism	10
Other	52
Forest Management	947
Total direct employment	7 461
Estimated Indirect employment	14 000

### Forests NSW Safety Performance (Frequency Rate)\*

2002-03	3.6
2003-04	2.8
2004-05	3.1
2005-06	2.7
2006-07	3.3
2007-08	4.5

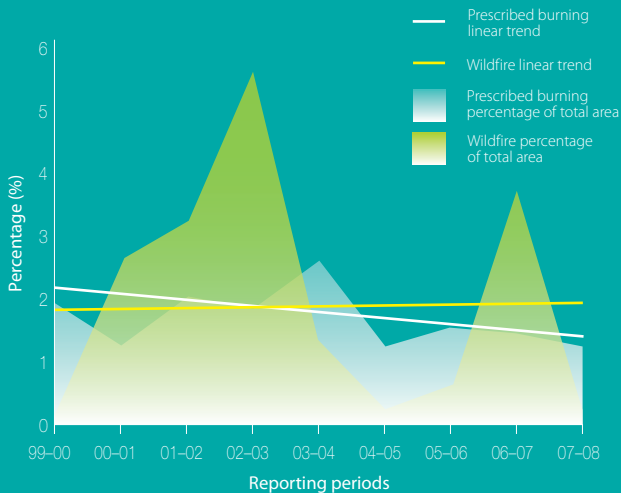
\* Number of Lost Time Incidents per 200 000 hours worked



# Environmental benefits

- Total forest estate over 2.49 million hectares
- 1.99 million hectares of native forests managed
- 2053 sightings of 34 targeted species during pre-harvest surveys
- Almost \$10 million spent on firefighting and bushfire prevention
- 22% of State forests treated by fuel management strategies
- More than \$1.1 million spent on feral animal control
- 8 million tonnes additional of CO<sub>2</sub>-equivalent stored in State forests
- 350 000 environmental compliance items checked in 4 000 internal compliance efforts
- 8.4 million seedlings grown in our nurseries (age-class 2006)

## Wildfires and prescribed burns trend as a percentage of Forests NSW estate



# Sustainability

- 1.4 million hectares available for timber production on State forests
- Mean annual increment for softwood plantations 16.3 m<sup>3</sup>/ha/yr and for hardwood plantations 13.6 m<sup>3</sup>/ha/yr
- Actual annual yield of high quality sawlogs as a percentage of allowable volume: 94% native hardwood forests; 96% cypress and 98% softwood plantations.

## What does sustainability mean for Forests NSW?

Managing State forests for the long term and retaining opportunities for future generations to meet their needs and expectations, while providing for the present.

# Forest Management Certification

Forests NSW maintained certification to the Australian Forestry Standard (AFS).

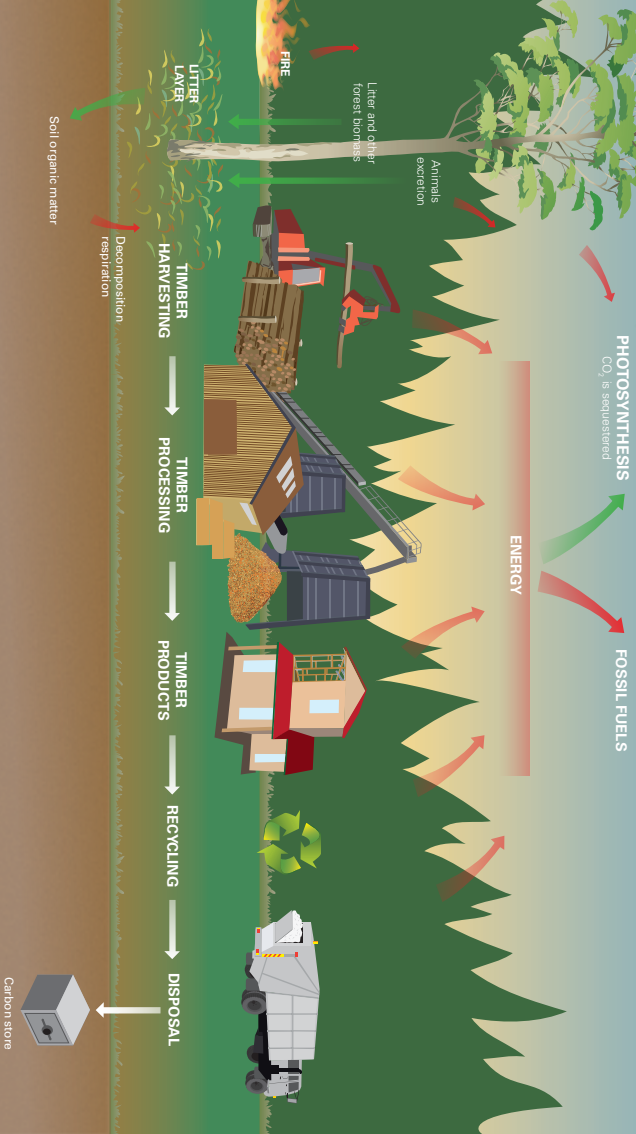
AFS gives independent assurance that Forests NSW management of NSW forests is consistent with internationally recognised principles of sustainable forest management.

Timber buyers wanting an assurance of sustainability should choose timber products displaying the logo for AFS and its over-arching scheme, Programme for the Endorsement of Forestry Certification (PEFC).

# GROW. HARVEST. STORE... FORESTS – PART OF THE CLIMATE CHANGE SOLUTION

**LEGEND**

- Calculating Carbon
- Releasing Carbon
- Moving carbon





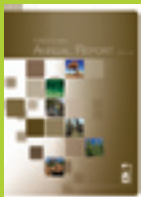
This document has been prepared as a summary. More detailed information can be viewed in Forests NSW Annual and Seeing (Sustainability) Reports online at [www.dpi.nsw.gov.au/forests](http://www.dpi.nsw.gov.au/forests)

For more information or copies of these documents contact Forests NSW Information Centre

T 1300 655 687 or 02 9871 3377

E [Cumberland@sf.nsw.gov.au](mailto:Cumberland@sf.nsw.gov.au)

W [www.dpi.nsw.gov.au/forests](http://www.dpi.nsw.gov.au/forests)



Annual Report 2007–08



Seeing Report 2007–08



Facts and Figures 2007–08



NSW DEPARTMENT OF  
**PRIMARY INDUSTRIES**



*Sustainable forest management certified to national and international standards*

*This document has been printed on PEFC certified paper*

This Facts and Figures is one of a set of summaries relating to primary industries in New South Wales. For details on agriculture, mineral resources and fisheries management in NSW see NSW Department of Primary Industries website [www.dpi.nsw.gov.au](http://www.dpi.nsw.gov.au)