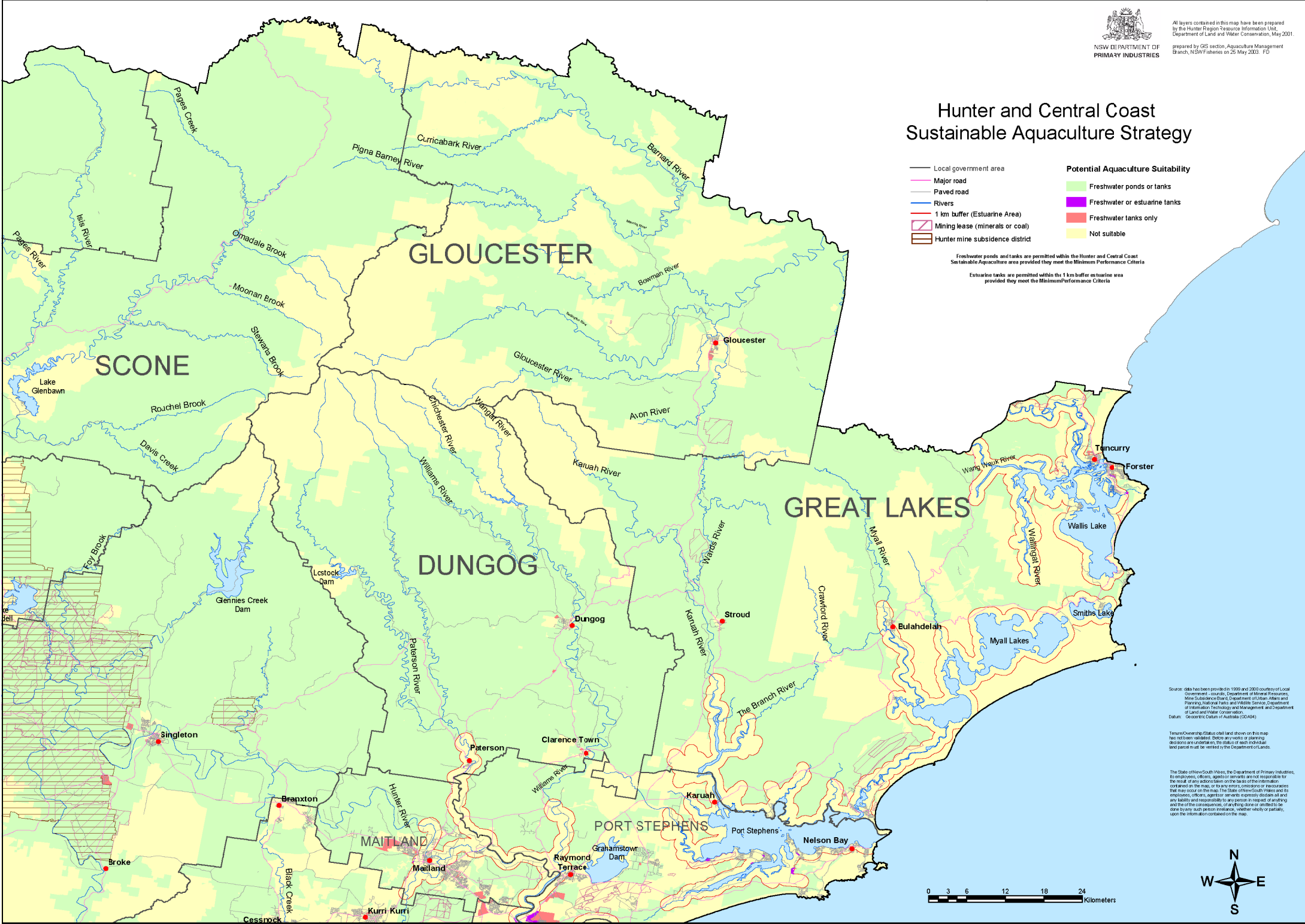


Hunter and Central Coast Sustainable Aquaculture Strategy

- Local government area
 - Major road
 - Paved road
 - Rivers
 - 1 km buffer (Estuarine Area)
 - Mining lease (minerals or coal)
 - Hunter mine subsidence district
- Potential Aquaculture Suitability**
 - Green: Freshwater ponds or tanks
 - Purple: Freshwater or estuarine tanks
 - Red: Freshwater tanks only
 - Yellow: Not suitable

Freshwater ponds and tanks are permitted within the Hunter and Central Coast Sustainable Aquaculture area provided they meet the Minimum Performance Criteria

Estuarine tanks are permitted within the 1 km buffer estuarine area provided they meet the Minimum Performance Criteria



Source: data has been provided in 1999 and 2000 courtesy of Local Government Councils, Department of Mineral Resources, Mine Subsidence Branch, Department of Urban Affairs and Planning, National Parks and Wildlife Service, Department of Information Technology and Management, Department of Land and Water Conservation, and Department of Geospatial Information Australia (CGIAR)

Township ownership status and land shown on this map has not been validated. State any errors or planning decisions are uncertain, the status of each individual land parcel must be verified by the Department of Lands.

The State of New South Wales, the Department of Primary Industries, its employees, officers, agents or servants are not responsible for the result of any action taken on the basis of the information contained on this map, or for any errors, omissions or inaccuracies that may occur on the map. The State of New South Wales and its employees, officers, agents or servants expressly disclaim all and any liability and responsibility to any person in respect of anything and the consequences of anything done or omitted to be done by any such person in reliance, whether totally or partially, upon the information contained on the map.

