

# Structural Reform Program

Statistical information for industry

The NSW Ocean Trawl Fishery  
including  
The NSW Southern Fish Trawl Restricted Fishery

Data prepared for the Seafood Industry Advisory Council Structural Adjustment Working Group by Industry and Investment NSW.

## **Ocean Trawl Fishery Overview**

Two types of trawling currently operate in ocean waters under the NSW Ocean Trawl Fishery, prawn trawling and fish trawling. Both methods employ similar gear, the otter trawl net, and many of the fishers with fish trawl endorsement also have prawn trawl prawn endorsements. Danish seining is also a permitted methodology, with no current participation.

The fishery produces high quality fresh seafood predominately for the domestic market. The major species taken in the Ocean Trawl Fishery include school whiting (comprising of stout whiting and red spot whiting), eastern king, school and royal red prawns, tiger flathead, silver trevally, squid, octopus, and other by-product species.

### **Managing the fishery**

A comprehensive Fishery Management Strategy has been prepared for the Ocean Trawl Fishery and was approved by the Minister for Primary Industries in January 2007. The Strategy includes a description of the fishery and the management arrangements that apply or are proposed. Before the Strategy was finalised, a draft strategy was subject to a comprehensive environmental impact assessment process under the NSW Environmental Planning and Assessment Act 1979. The Environmental Impact Statement was publicly exhibited in August 2004.

The Ocean Trawl Fishery is a share management fishery. This means that commercial fishers must hold sufficient shares to be eligible for an endorsement to operate in the fishery. An endorsement authorises the use of specific gear to take fish for sale from certain waters.

The fishery is currently managed by input controls which limit the fishing capacity of the fleet by indirectly controlling the amount of fish caught. These controls include restrictions on the number of endorsements, the size and engine capacity of boats, the design and dimensions of trawl nets, and the waters that may be worked.

The five types of trawling endorsements in NSW ocean waters are listed below. They specify the methods that may be used and the waters in which fishing may be conducted.

### **Prawn Trawling Sector**

The prawn trawl sector is the State's most valuable fishery. Prawn trawlers use otter trawl nets to target prawns and school whiting. Incidental catches of other by-product species may also be landed.

Types of endorsements in this sector are:

1. Ocean Prawn Trawl (Inshore) - This endorsement provides for fishing operations in NSW from the coast to three nautical miles to sea from the Queensland border in the north to the Victorian border in the south. The main species harvested are school prawns, school whiting and eastern king prawns.

2. Ocean Prawn Trawl (Offshore) - This endorsement provides for fishing operations in NSW waters north of Barrenjoey Head between 3 nautical miles and the 280 metre (150 fathom) depth contour. The main species harvested are eastern king prawns and school whiting.

3. Ocean Prawn Trawl (Deepwater) - This endorsement provides for fishing operations in NSW waters north of Barrenjoey Head between the 280 metre (150 fathom) depth contour and the 4000 metre depth contour (approximately 80 nautical miles to sea). The main species harvested are royal red and scarlet prawns in depths between 200 and 350 fathoms.

### **Fish Trawling Sector**

Target species include silver trevally, tiger flathead, southern calamari and school whiting.

Types of endorsements in this sector are:

4. Ocean Fish Trawl (North) - This endorsement provides for fishing operations in waters between the coastal baseline and the 4000 metre depth contour (approximately 80 nautical miles to sea), between Smoky Cape (South West Rocks) in the north and Barrenjoey Head (Sydney) in the south.

5. Ocean Fish Trawl (South) - This fishery operates in waters between the coastal baseline and 3 nautical miles to sea, south of Barrenjoey Head (Sydney). This fishery is not managed under the share management framework. Instead, it is managed under a Southern Fish Trawl Restricted Fishery framework.

### **Relevant Legislation** (see: <http://www.legislation.nsw.gov.au/> )

*Fisheries Management Act 1994 No 38*

*Fisheries Management (General) Regulation 2002*

*Fisheries Management (Supporting Plan) Regulation 2006*

*Fisheries Management (Ocean Trawl Share Management Plan) Regulation 2006*

and

*Environmental Planning and Assessment Act 1979 No 203*

# Ocean Trawl Fishery

Statistical information for industry

Gross Reported Product (tonnes)

Gross Value of Product (GVP)

Reported Effort (months/days)

Based on reported gross species landings by sector.

These values are summed across 5 years (March 2003 to February 2008).

Gross Value of Product (GVP) is based on reported landings by species using the corresponding Sydney Fish Market average monthly species price. For brevity it is reported to the nearest \$1,000 for the 5 years (5yr \$'000).

Please note that due to difficulties in determining specific share class/endorsement used for some reported activities (e.g. fish trawling – participants could have been Northern Zone Fish Trawl or Southern Fish Trawl endorsed when reporting zone 6 catches), data has been aggregated reporting by sector.

Please note that in this document in regards to the Ocean Fish Trawl Southern Restricted Fishery reference to “shares” is actually to endorsements in the fishery as it is not a share management fishery.

Table 1: Ocean Trawl Shares held in Fishing Businesses (FB) as at 07-01-10 (“Currently”), of the 250 FB with shares/endorsements in the Ocean Trawl Fishery (OTF), 76 FB (30%) have less than the minimum shares in one or more OT share classes.

Share Description	Minimum Shares for endorsement	Total Shares as at 07-01-10	No. of FB at or above Min.	No. of FB below Min.	Total No. of Shareholdings	Max. No. of Endorsements at minimum
Ocean Fish Trawl Southern Restricted Fishery	1	23	23	-	23	23
Ocean Trawl Deepwater Prawn	20	656	16	27	43	32
Ocean Trawl Fish Northern Zone	32	2,186	44	8	52	68
Ocean Trawl Inshore Prawn	32	11,217	180	37	217	350
Ocean Trawl Offshore Prawn	32	10,035	164	29	193	313
Number of Fishing Bussinesses (FB)			174	76	250	250

Note: Maximum number of endorsements is calculated by dividing total shares by minimum shares for endorsement and rounding down.

Note: In these tables for the Ocean Fish Trawl Southern Restricted Fishery reference to “shares” is actually to endorsements.

Table 2: Ocean Trawl Shares held in FB as at 06-02-07 (“Start of OT SMP”), of the 304 FB with shares/endorsements in the OTF, 129 FB (42%) had less than the minimum shares in one or more OT share classes.

Share Description	Minimum Shares for endorsement	Total Shares as at 06-02-07	No. of FB at or above Min.	No. of FB below Min.	Total No. of Shareholdings	Max. No. of Endorsements
Ocean Fish Trawl Southern Restricted Fishery	1	40	40	-	40	40
Ocean Trawl Deepwater Prawn	20	743	12	47	59	37
Ocean Trawl Fish Northern Zone	32	2,479	44	20	64	77
Ocean Trawl Inshore Prawn	32	11,743	192	58	250	366
Ocean Trawl Offshore Prawn	32	10,413	176	47	223	325
Number of Fishing Bussinesses (FB)			175	129	304	304

Note: Maximum number of endorsements is calculated by dividing total shares by minimum shares for endorsement and rounding down.

Table 3: The change in diversity in OT endorsement classes of OT FBs from the start of share management (06-02-07) to the present.

No. of OT Share classes	No. of OT FB as at 06-02-07	Proprtion of total OT FB as at 06-02-07	No. of OT FB as at 07-01-10	Proprtion of total OT FB as at 07-01-10
1	70	23%	55	22%
2	161	53%	136	54%
3	51	17%	39	16%
4	19	6%	16	6%
5	3	1%	4	2%
Total Number of OT FB	304		250	

Table 4: The change in diversity in fisheries of OT FBs from the start of share management (06-02-07) to the present.

OT FBs No. of Fisheries	No. of OT FB as at 06-02-07	Proprtion of total OT FB as at 06-02-07	No. of OT FB as at 07-01-10	Proprtion of total OT FB as at 07-01-10
1 (OT only)	154	51%	134	54%
2	87	29%	74	30%
3	52	17%	37	15%
4	9	3%	4	2%
5	2	1%	1	0%
Total Number of OT FB	304		250	

Table 5: The change in fisheries of OT FBs from the start of share management (06-02-07) to the present.

OT FBs in other Fisheries	No. of OT FB as at 06-02-07	Proprtion of total OT FB as at 06-02-07	No. of OT FB as at 07-01-10	Proprtion of total OT FB as at 07-01-10
Ocean Trawl only	154	51%	134	54%
Ocean Trap & line	86	28%	60	24%
Ocean Hauling	16	5%	12	5%
Estuary General	54	18%	40	16%
Estuary Prawn Trawl	70	23%	52	21%
Total Number of OT FB	304		250	

Graph 1: The relationship between earnings (total GVP) per FB from the OTF and earnings from other fisheries. Each dot represents a business and the higher the dot on the left-hand axis the more that business earns from the OTF, up to 100%. Note that most FB are at the top of the graph, meaning most derive the majority of their income from the OTF.

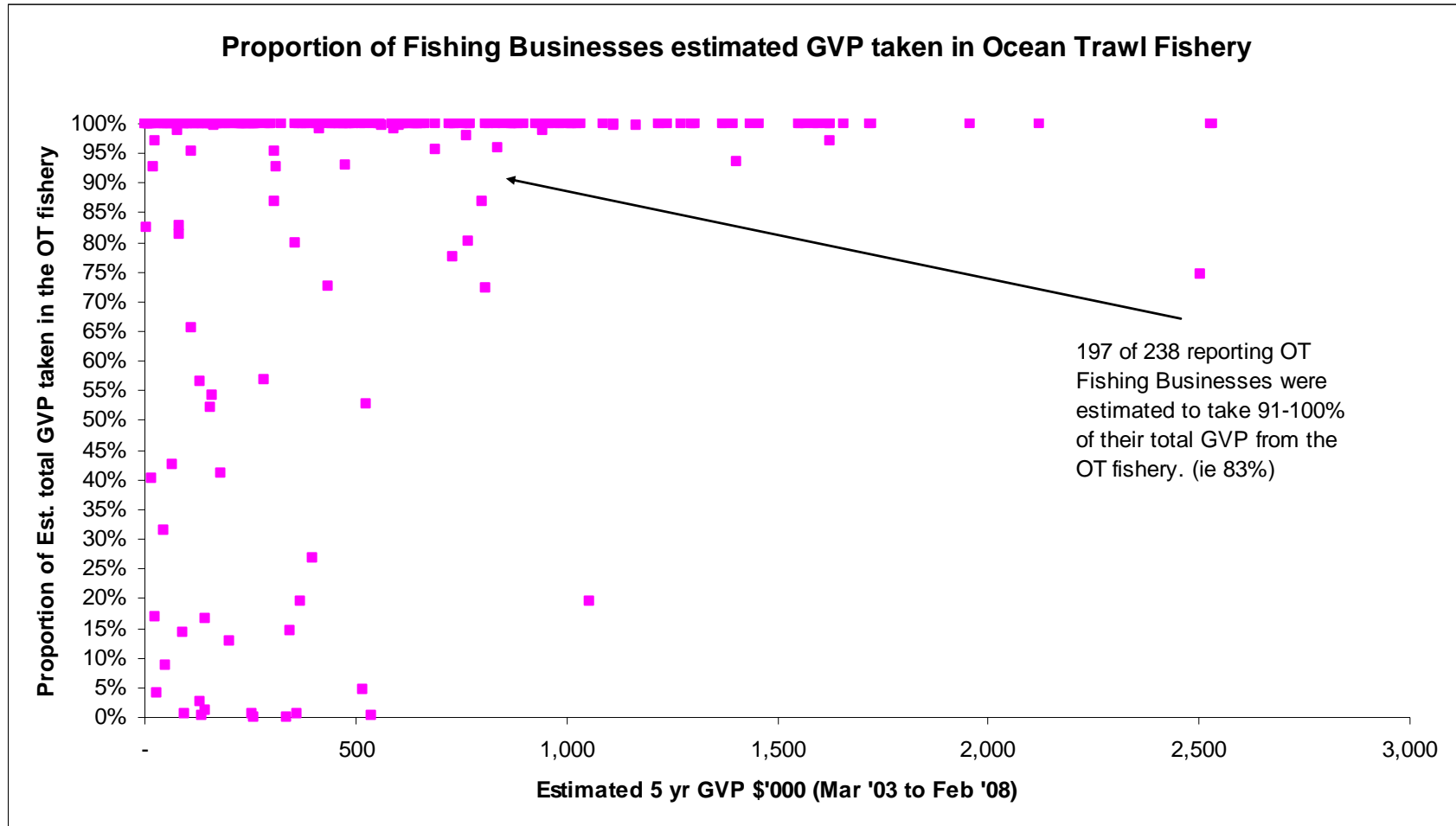


Table 6: The relationship between earnings (total GVP) per business from OTF and earnings from other fisheries. The number of FB represents the number of FB reporting for those 5 years. It is worth noting that 79 FB reporting OT catch have an estimated GVP over a 5 year period of less than \$200,000, i.e. on average harvesting less than \$40,000 worth\* of fish per year in any of the share management fisheries (EG, EPT, OH, OTL &/or OT).

\* At first point of sale based on SFM prices, this is gross, actual earnings are likely to be significantly less due to operating costs.

Ocean Trawl Fishery FB Total Est GVP (5yr \$'000)	Proportion of FB 5yr fisheries GVP from the OT fishery										No. of FB
	<=10%	11-20%	21-30%	31-40%	41-50%	51-60%	61-70%	71-80%	81-90%	91-100%	
0-50	1	1		2					1	20	25
50-100	2	1			1				2	12	18
100-150	3	1				1	1			13	19
150-200					1	2				14	17
200-250		1								12	13
250-300	2					1				9	12
350-400	2	2	1					1	1	8	15
450-500								1		17	18
500-600	2					1				9	12
600-750								1		20	21
750-1,000								2	1	25	28
1,000-1,500		1								22	23
1,500-2,000										13	13
2,000-3,000								1		3	4
No. of FB	12	7	1	2	2	5	1	6	5	197	238

Note: There are currently 250 FB with Ocean Trawl shares/endorsements.

Table 7: Estimated GVP for a 5 year period (Mar 2002—Feb 2008) based on reported catch by sector.

Method Group	Share Classes	Current No. of Shareholders	No. of FB reporting	GVP (5yr \$'000)
Prawn Trawl	IPT, OPT & DWPT	241	205	95,333
Fish Trawl	FTN & SFT	65	66	27,369
<b>Total Number of OT FB</b>		<b>250</b>	<b>238</b>	<b>122,701</b>



Table 8: The relationship between earnings (total GVP) per FB from the OTF by sector over a 5 year period (Mar 2002—Feb 2008).

Number of OT FB	OT (all)	OT (Prawn)	OT (Fish)
Reporting	238	205	66
95% of OT GVP	146	119	40
90% of OT GVP	122	99	29
80% of OT GVP	94	75	25
Est. OT 5yr GVP \$'000	122,701	95,333	27,369
Est. OT FB av GVP \$'000/yr for reporting FBs	103	93	83

(i.e. Of 238 FB reporting working in the OTF over a 5 year period, 94 FB landed 80% of the total estimated GVP in that period in the OT fishery)

Table 9: Proportion of reported effort (fisher months) by Ocean Trawl sector by reporting FB for a 5 year period (Mar 2002—Feb 2008).

Number of OT FB	OT (all)	OT (Prawn)	OT (Fish)
Reporting	238	205	66
95% of OT Effort (m)	173	146	46
90% of OT Effort (m)	153	127	40
80% of OT Effort (m)	127	103	33
OT 5yr Effort (m)	7,890	6,259	1,855
OT FB av Effort/yr (m)	7	6	6

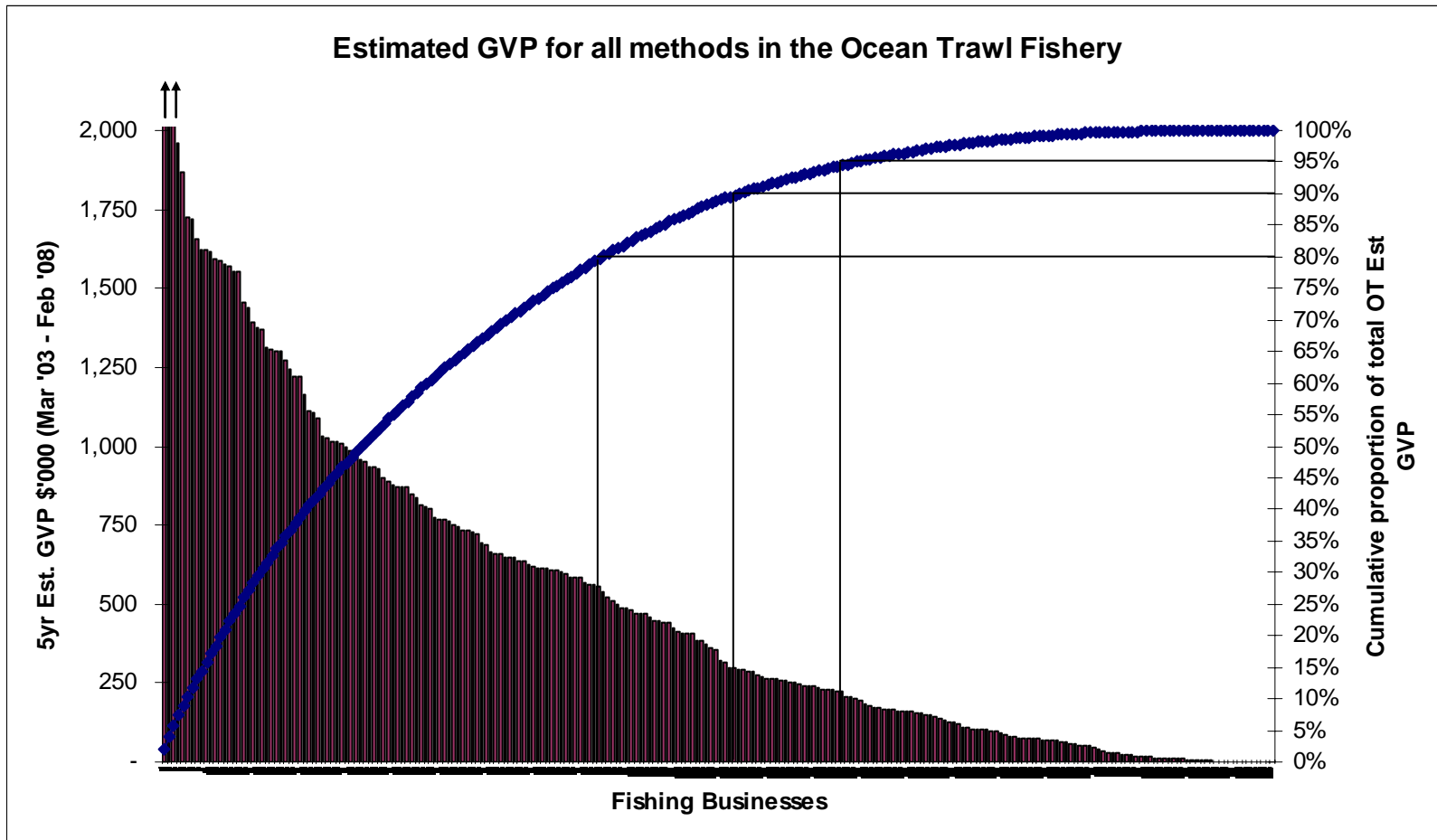
(i.e. Of 238 FB reporting working in the OTF over a 5 year period, 127 FB reported working 80% of the total months reported fished in that period in the OTF)

Table 10; Proportion of reported effort (days) by Ocean Trawl sector by reporting FB for a 5 year period (Mar 2002—Feb 2008).

Number of OT FB	OT (all)	OT (Prawn)	OT (Fish)
Reporting	238	205	66
95% of OT Effort (d)	158	129	42
90% of OT Effort (d)	135	109	36
80% of OT Effort (d)	105	85	27
OT 5yr Effort (d)	82,685	64,943	17,742
OT FB av Effort/yr (d)	69	63	54

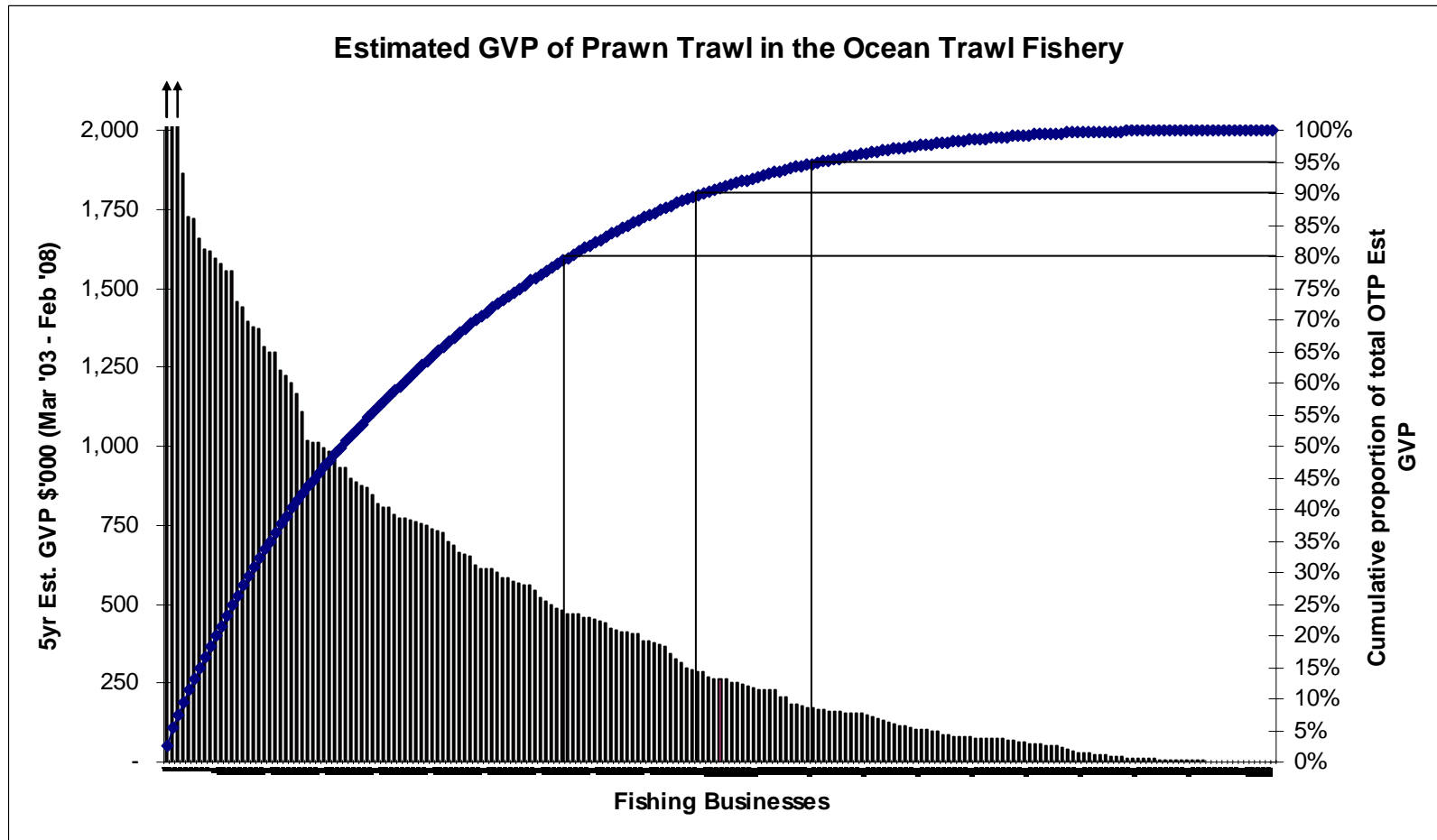
Note: Days by sector is based on sector total reported by month for each reporting FB.

Graph 2: The bars on this graph relate to the left-hand axis and show GVP sorted by rank for all OT FB over the 5 years from March 2003. This graph shows estimated income from the reported OT catch by all methods and not any other part of any business.



- Note: 238 FB reported OTF catch for any method over the 5 years from March 2003 (Total \$122,701K, average \$103K/FB/yr)
- Note: 94 FB reported 80% of the estimated GVP of the OTF catch for any method over the 5 years from March 2003
- Note: 146 FB reported 95% of the estimated GVP of the OTF catch for any method over the 5 years from March 2003
- Note: 250 FB currently have Ocean Trawl shares/endorsements.

Graph 3: The bars on this graph relate to the left-hand axis and show GVP sorted by rank for all OT (prawn) businesses over the 5 years from March 2003. This graph shows estimated income from the reported OT catch by all prawn trawl endorsed methods and not any other part of any business.



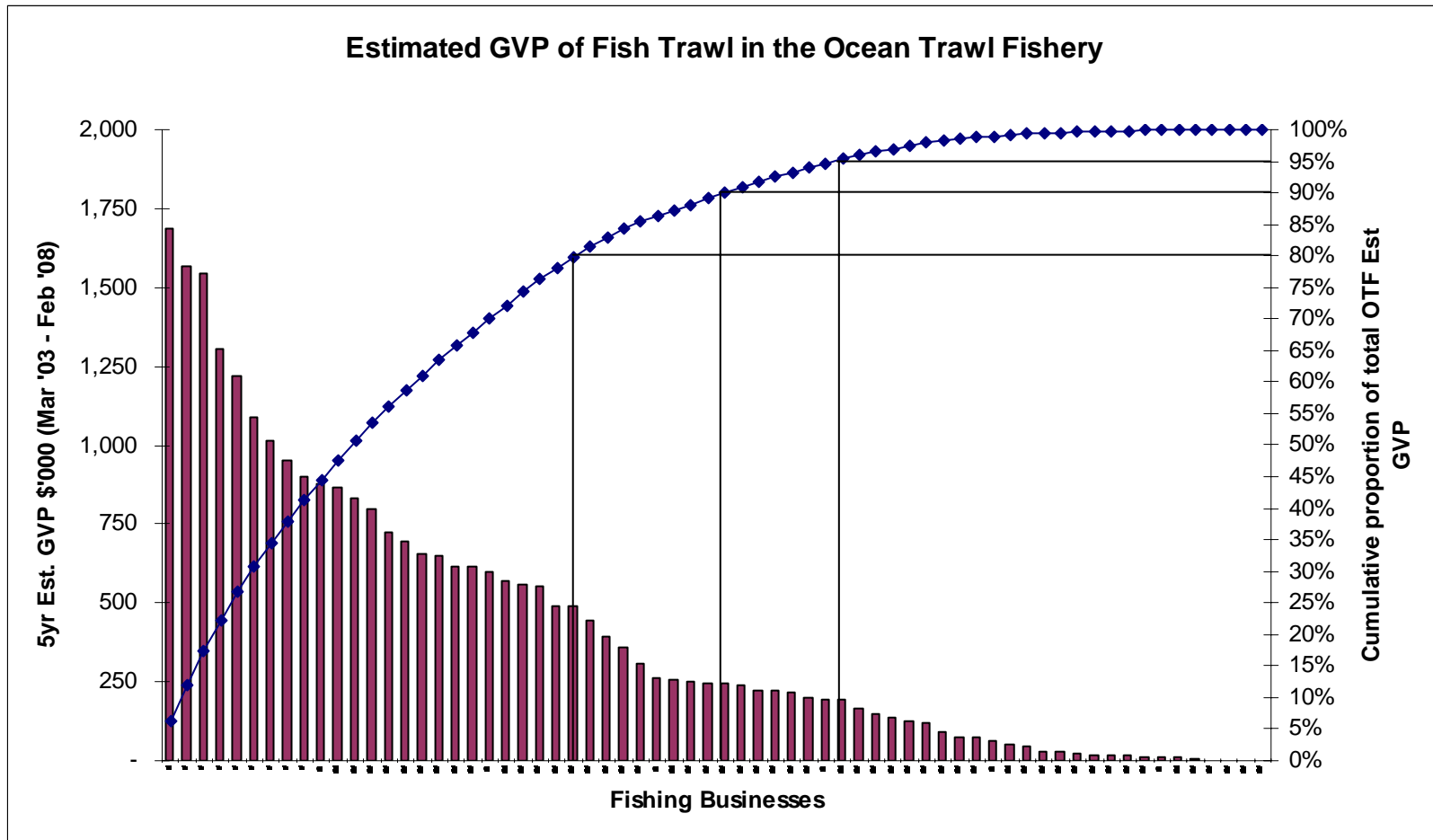
Note: 205 FB reported Ocean Prawn Trawl sector catch over the 5 years from March 2003 (Total \$95,333K, average \$93K/FB/yr)

Note: 75 FB reported 80% of the estimated GVP of the Ocean Prawn Trawl sector catch over the 5 years from March 2003

Note: 119 FB reported 95% of the estimated GVP of the Ocean Prawn Trawl sector catch over the 5 years from March 2003

Note: 241 FB currently have Ocean Prawn Trawl shares.

Graph 4: The bars on this graph relate to the left-hand axis and show GVP sorted by rank for all OT (fish) businesses over the 5 years from March 2003. This graph shows estimated income from the reported OT catch by Fish trawl endorsed methods and not any other part of any business.



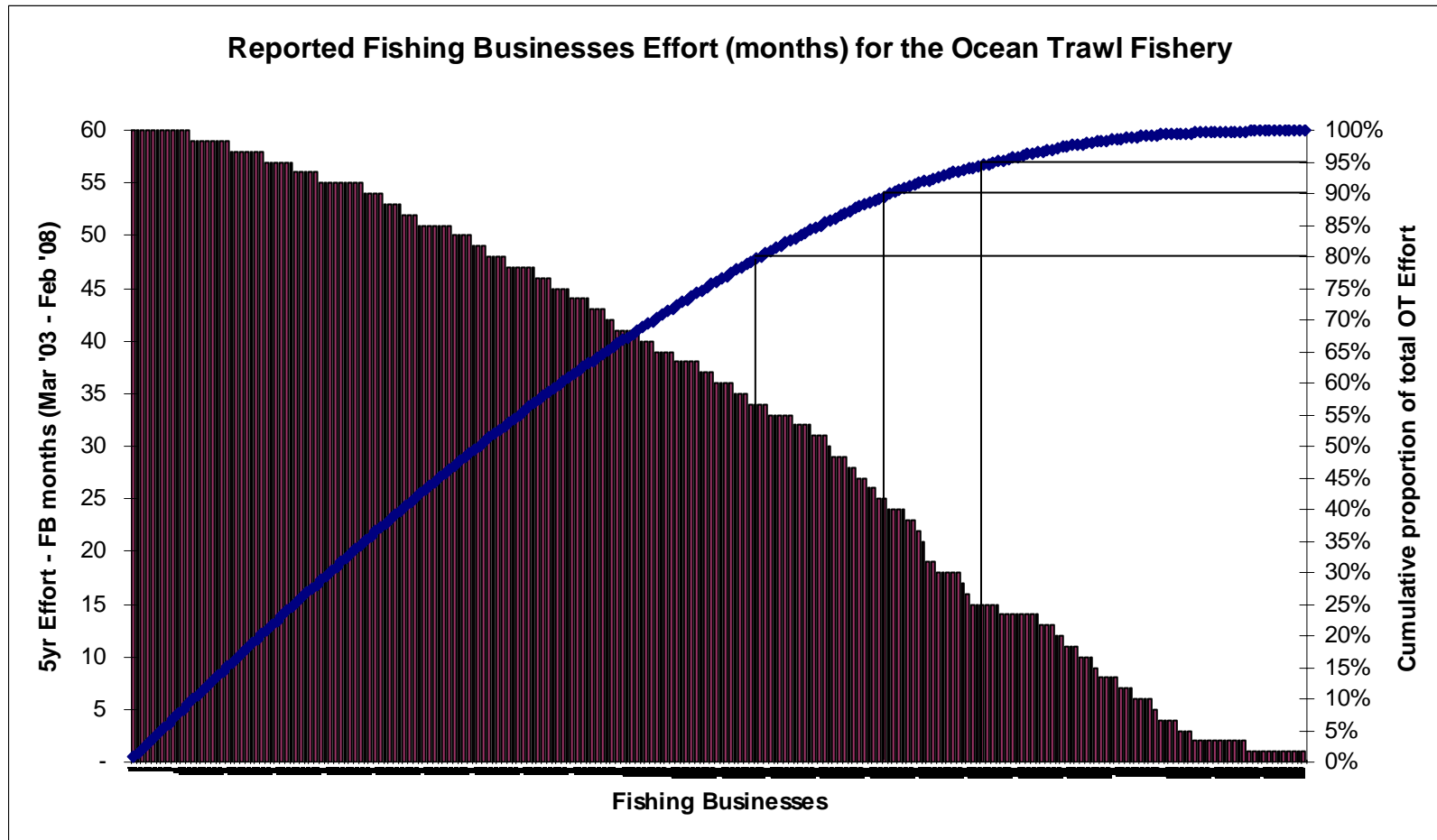
Note: 66 FB reported Ocean Fish Trawl sector catch over the 5 years from March 2003 (Total \$27,369K, average \$83K/FB/yr)

Note: 25 FB reported 80% of the estimated GVP of the Ocean Fish Trawl sector catch over the 5 years from March 2003

Note: 40 FB reported 95% of the estimated GVP of the Ocean Fish Trawl sector catch over the 5 years from March 2003

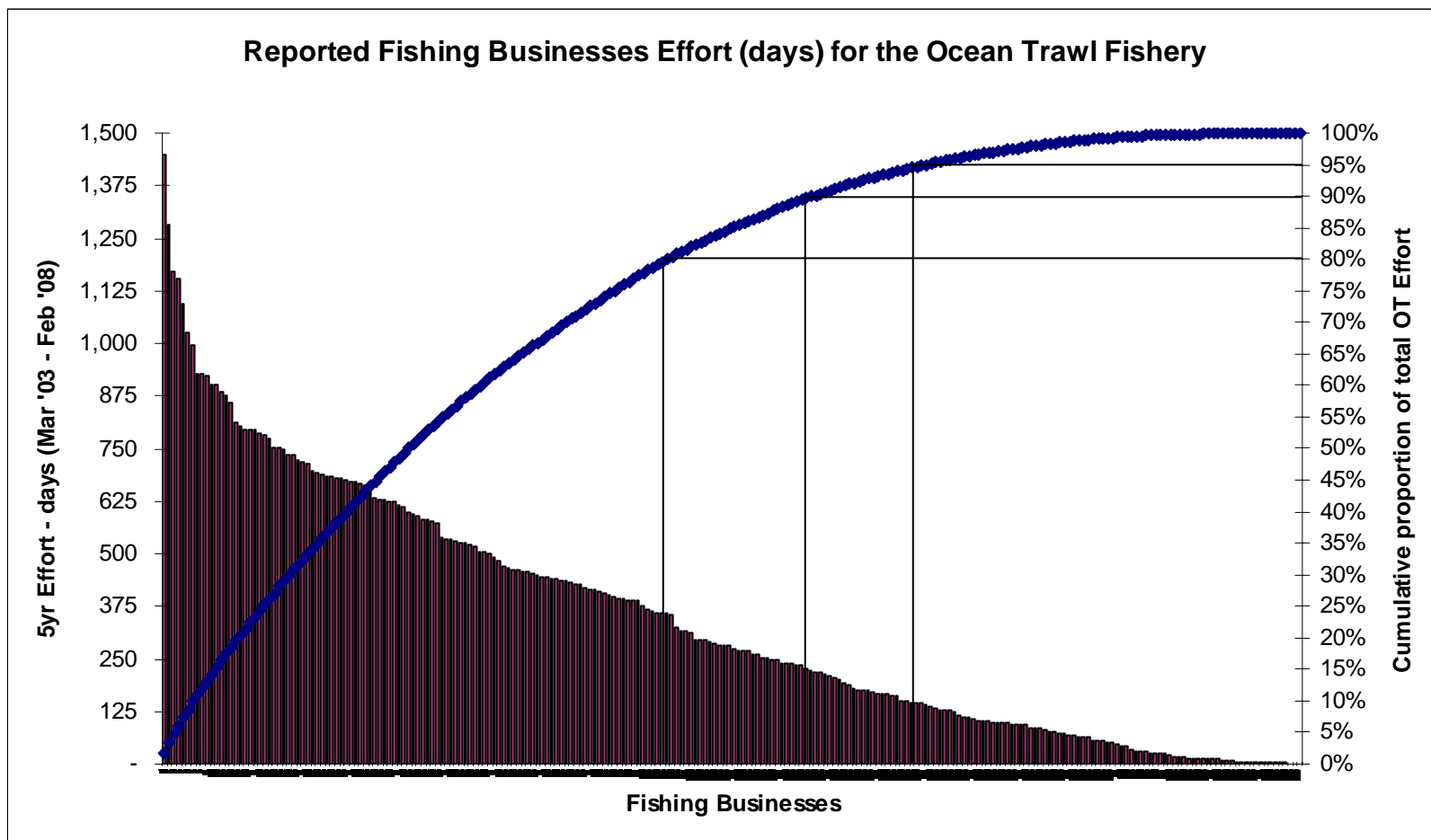
Note: 65 FB currently have Ocean Trawl Fish Northern Zone shares or Southern Fish Trawl endorsements.

Graph 5: The bars on this graph relate to the left-hand axis and show effort sorted by rank for all reported OT FB over the 5 years from March 2003. This graph shows reported effort (months fished) in the OTF and not any other part of any business.



- Note: 238 FB reported OT effort for any method over the 5 years from March 2003 (7,890 months in total, FB average 7m/yr)
- Note: 94 FB reported 80% of the effort (fisher months) of the OTF for any method over the 5 years from March 2003
- Note: 146 FB reported 95% of the effort (fisher months) of the OTF for any method over the 5 years from March 2003
- Note: 250 FB currently have OT shares/endorsements.

Graph 6: The bars on this graph relate to the left-hand axis and show effort sorted by rank for all reported OT FB over the 5 years from March 2003. This graph shows reported effort (days fished) in the OTF and not any other part of any business.



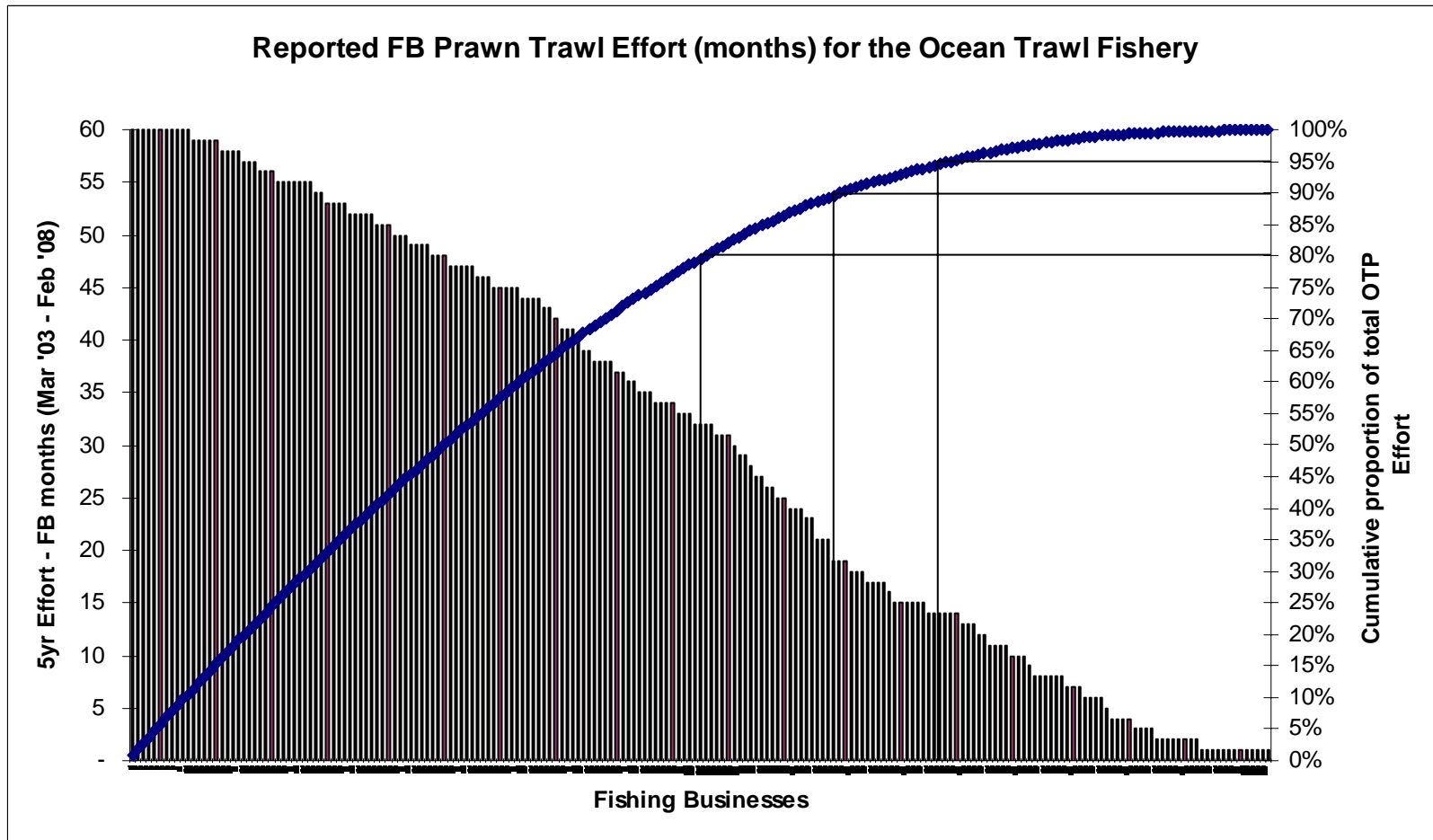
Note: 238 FB reported OT effort for any method over the 5 years from March 2003 (82,685 days in total, FB average 69d/yr)

Note: 105 FB reported 80% of the effort (days) of the OTF for any method over the 5 years from March 2003

Note: 158 FB reported 95% of the effort (days) of the OTF for any method over the 5 years from March 2003

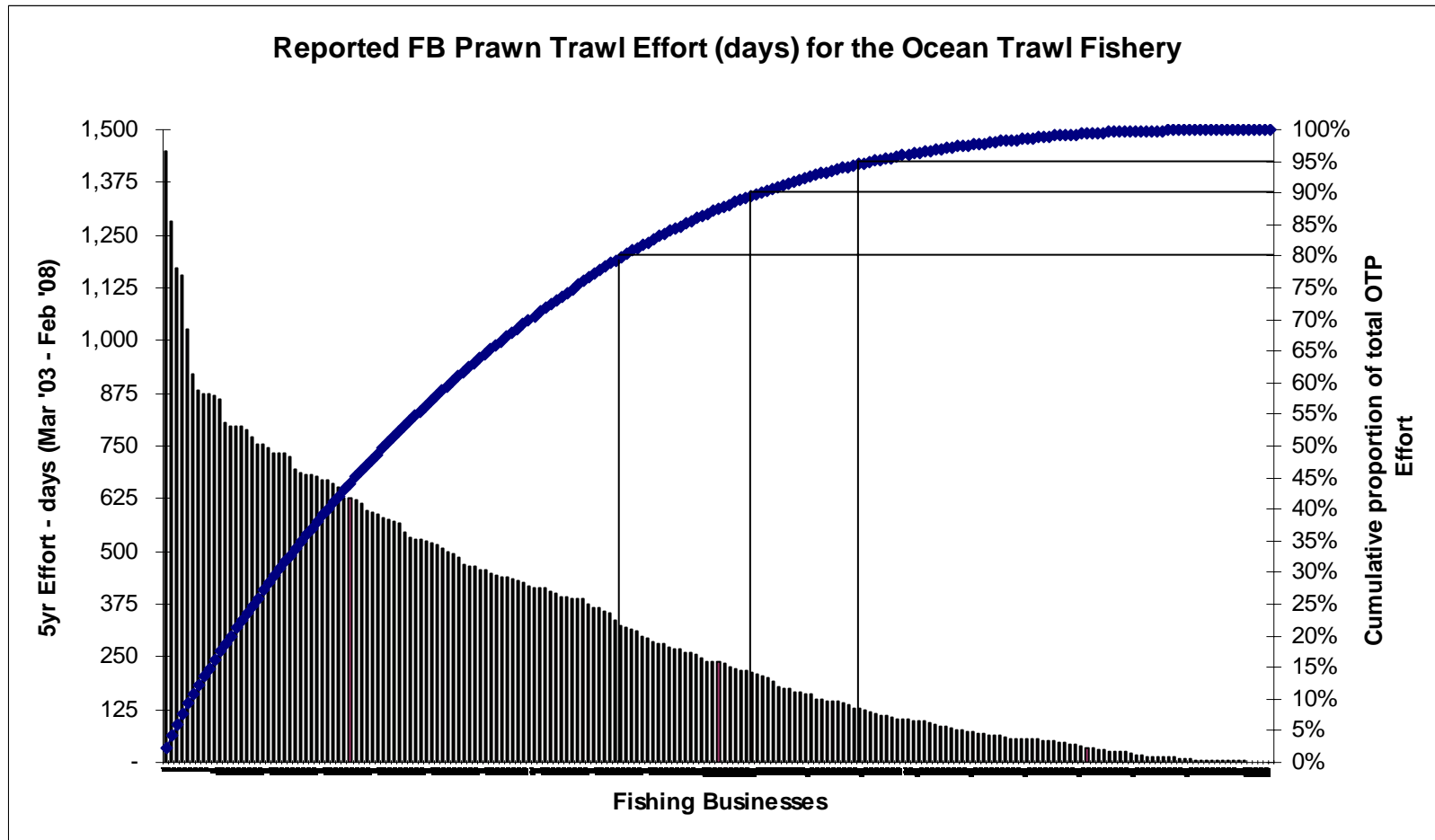
Note: 250 FB currently have OT shares/endorsements.

Graph 7: The bars on this graph relate to the left-hand axis and show effort sorted by rank for all reported OT FB over the 5 years from March 2003. This graph shows Ocean Prawn Trawl sector reported effort (months fished) in the Ocean Trawl Fishery and not any other part of any business.



- Note: 205 FB reported Ocean Prawn Trawl sector effort over the 5 years from March 2003 (6,259 months in total, FB average 6m/yr)
- Note: 103 FB reported 80% of the effort (fisher months) of the Ocean Prawn Trawl sector effort over the 5 years from March 2003
- Note: 146 FB reported 95% of the effort (fisher months) of the Ocean Prawn Trawl sector effort over the 5 years from March 2003
- Note: 241 FB currently have Ocean Trawl – Inshore/Offshore/Deepwater - shares.

Graph 8: The bars on this graph relate to the left-hand axis and show effort sorted by rank for all reported OT FB over the 5 years from March 2003. This graph shows Prawn Trawl sector reported effort (days fished) in the OTF and not any other part of any FB.



Note: 205 FB reported Ocean Prawn Trawl sector effort over the 5 years from March 2003 (64,943 days in total, FB average 63d/yr)

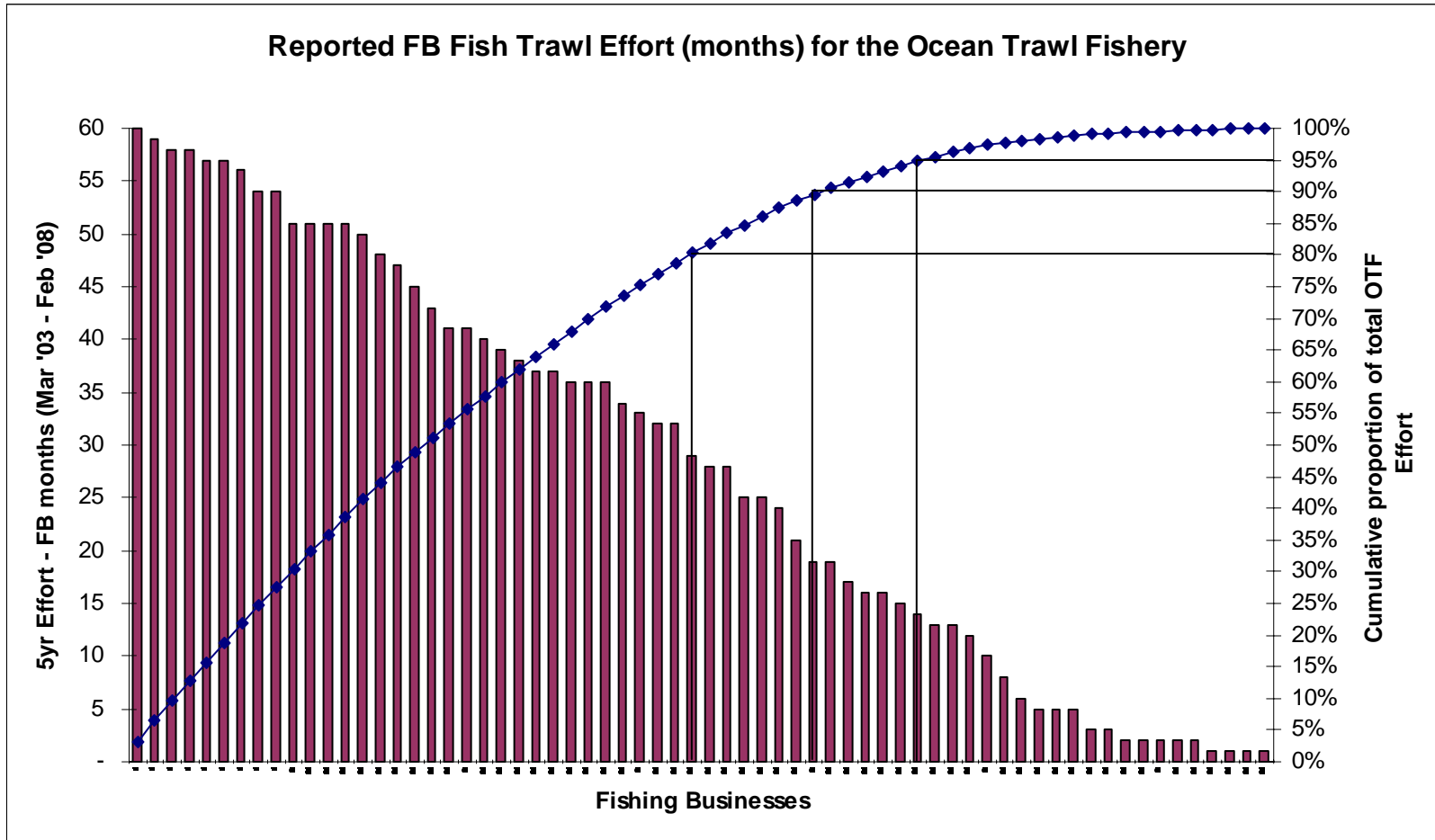
Note: 85 FB reported 80% of the effort (fisher months) of the Ocean Prawn Trawl sector effort over the 5 years from March 2003

Note: 129 FB reported 95% of the effort (fisher months) of the Ocean Prawn Trawl sector effort over the 5 years from March 2003

Note: 241 FB currently have Ocean Trawl – Inshore/Offshore/Deepwater - shares.



Graph 9: The bars on this graph relate to the left-hand axis and show effort sorted by rank for all reported OT FB over the 5 years from March 2003. This graph shows Fish Trawl sector reported effort (months fished) in the OTF and not any other part of any business.



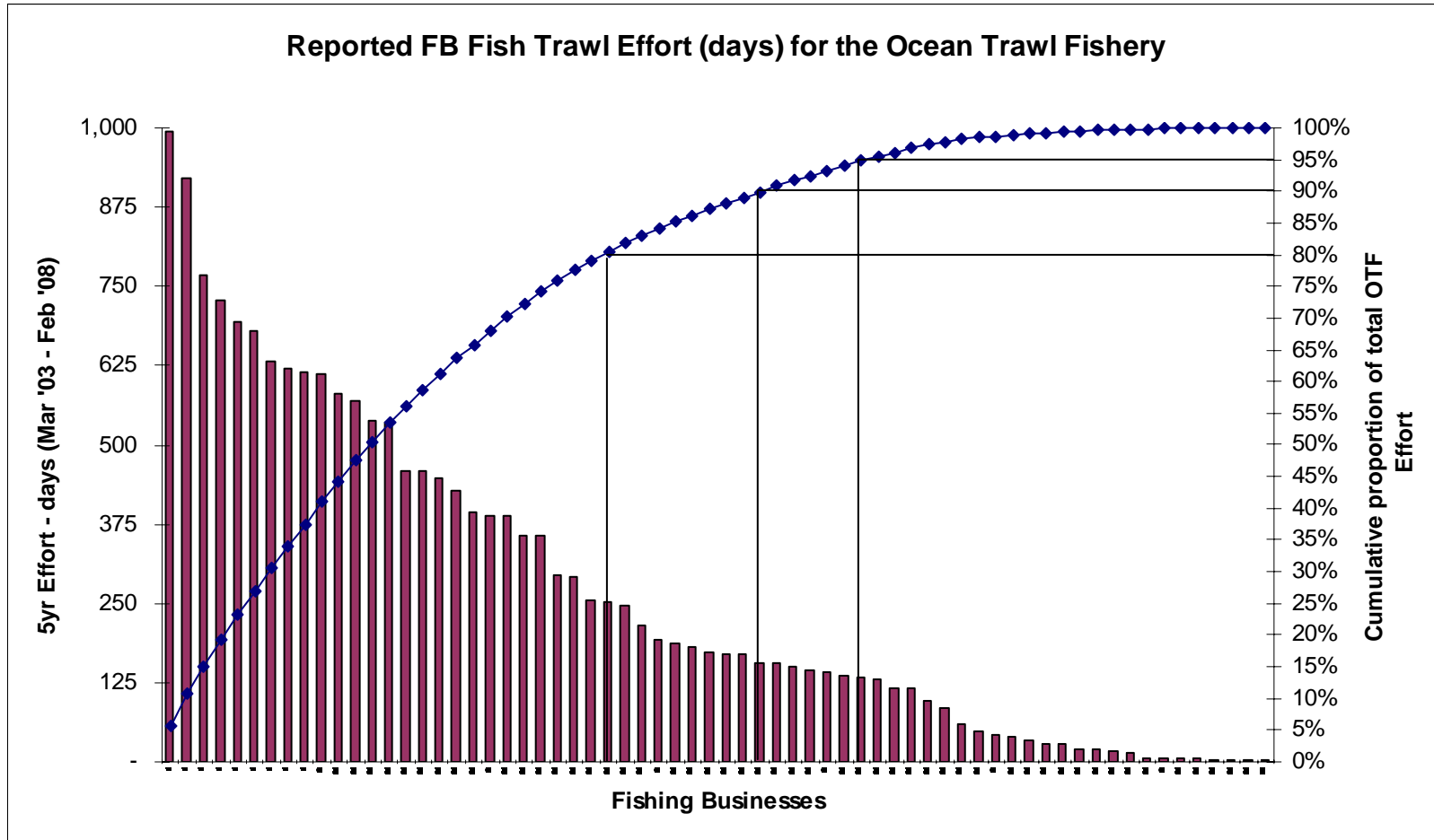
Note: 66 FB reported Ocean Fish Trawl effort over the 5 years from March 2003 (1,855 months in total, FB average 6m/yr)

Note: 33 FB reported 80% of the effort (fisher months) of the Ocean Fish Trawl sector effort over the 5 years from March 2003

Note: 46 FB reported 95% of the effort (fisher months) of the Ocean Fish Trawl sector effort over the 5 years from March 2003

Note: 65 FB currently have Ocean Trawl Fish Northern Zone shares or Southern Fish Trawl endorsements.

Graph 10: The bars on this graph relate to the left-hand axis and show effort sorted by rank for all reported OT FB over the 5 years from March 2003. This graph shows Fish Trawl sector reported effort (days fished) in the OTF and not any other part of any business.



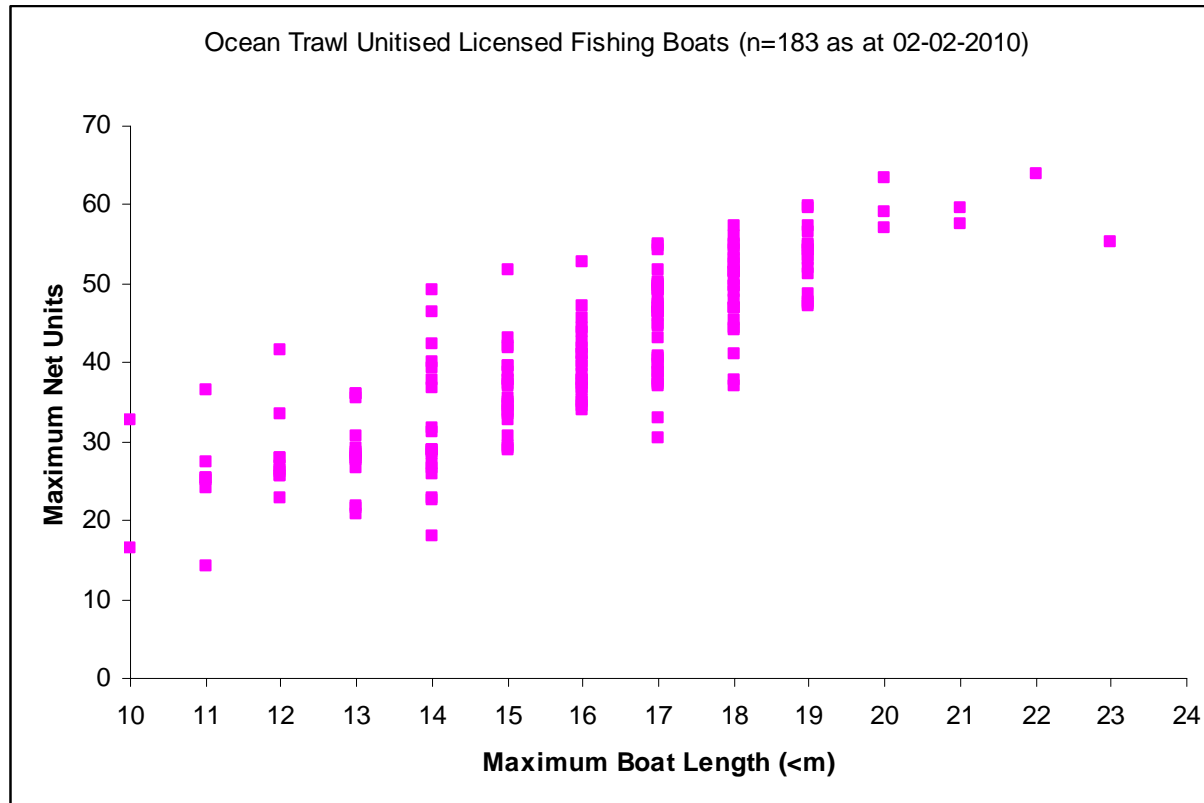
Note: 66 FB reported Ocean Fish Trawl effort over the 5 years from March 2003 (17,742 days in total, FB average 54d/yr)

Note: 27 FB reported 80% of the effort (fisher months) of the Ocean Fish Trawl sector effort over the 5 years from March 2003

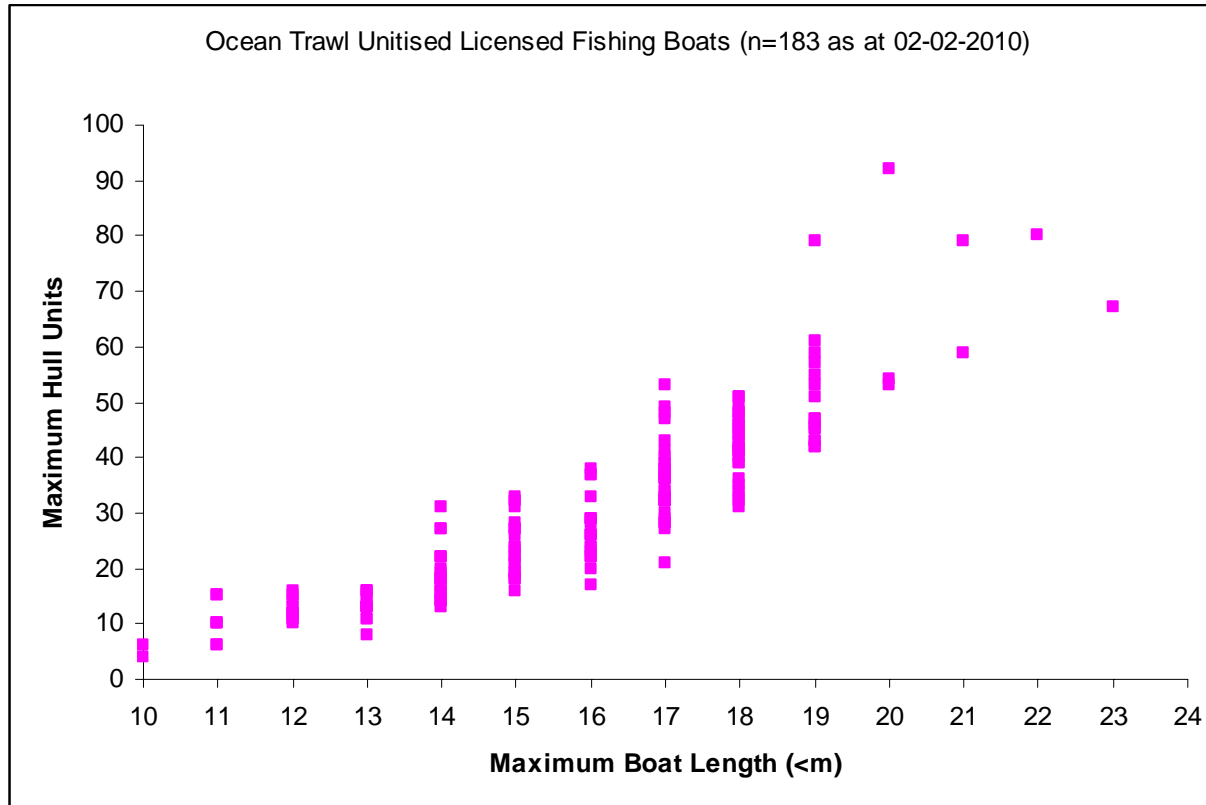
Note: 42 FB reported 95% of the effort (fisher months) of the Ocean Fish Trawl sector effort over the 5 years from March 2003

Note: 65 FB currently have Ocean Trawl Fish Northern Zone shares or Southern Fish Trawl endorsements

Graph 11: Relationship between Maximum Boat Length (in metres – rounded up) and Maximum Net Units of Ocean Trawl unitised Licensed fishing boats, noting that as at 02-02-2010 there was 183 such licensed fishing boats and currently\* 193 Fishing Businesses holding Offshore Prawn shares.  
\*as at 07-01-2010

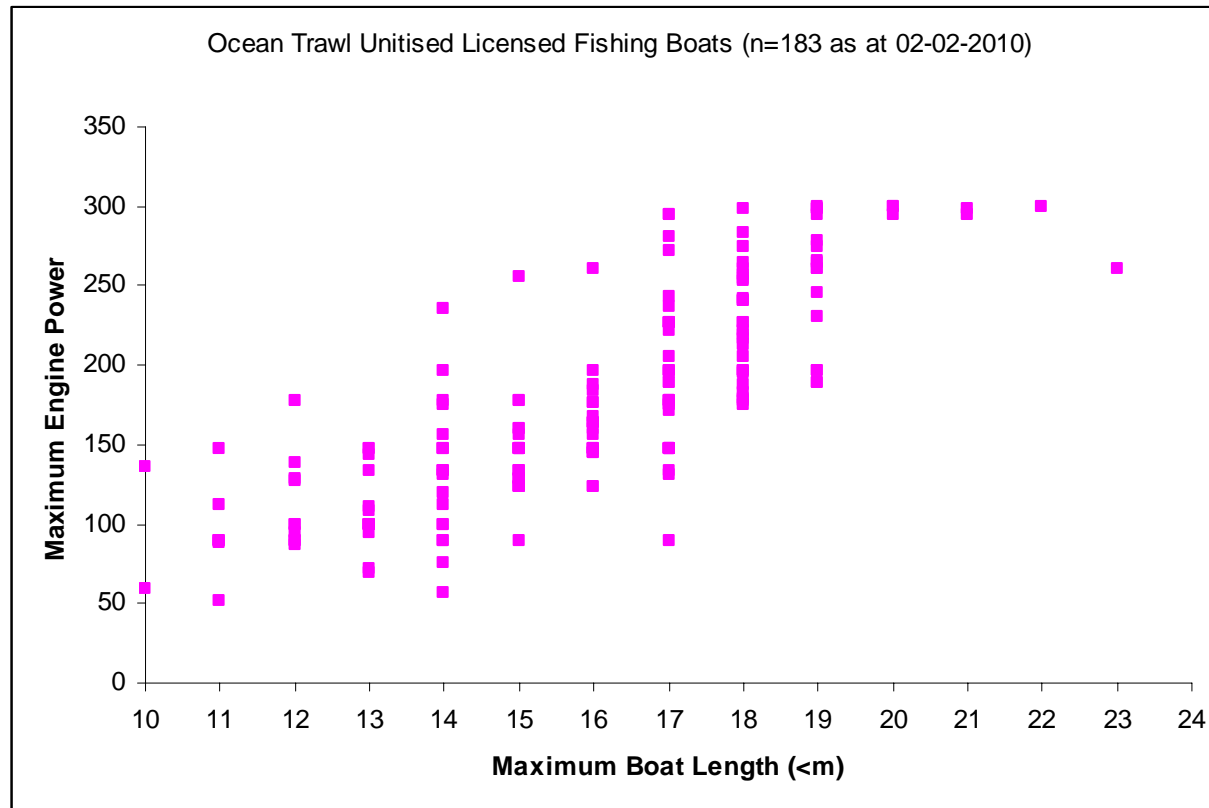


Graph 12: Relationship between Maximum Boat Length (in metres – rounded up) and Maximum Hull Units of Ocean Trawl unitised Licensed fishing boats, noting that as at 02-02-2010 there was 183 such licensed fishing boats and currently\* 193 Fishing Businesses holding Offshore Prawn shares.  
\*as at 07-01-2010



Graph 13: Relationship between Maximum Boat Length (in metres – rounded up) and Maximum Engine Power of Ocean Trawl unitised Licensed fishing boats, noting that as at 02-02-2010 there was 183 such licensed fishing boats and currently\* 193 Fishing Businesses holding Offshore Prawn shares.

\*as at 07-01-2010



Graph 14: Relationship between Maximum Boat Length (in metres – rounded up) and Maximum Head Rope of Ocean Trawl unitised Licensed fishing boats, noting that as at 02-02-2010 there was 183 such licensed fishing boats and currently\* 193 Fishing Businesses holding Offshore Prawn shares.  
\*as at 07-01-2010

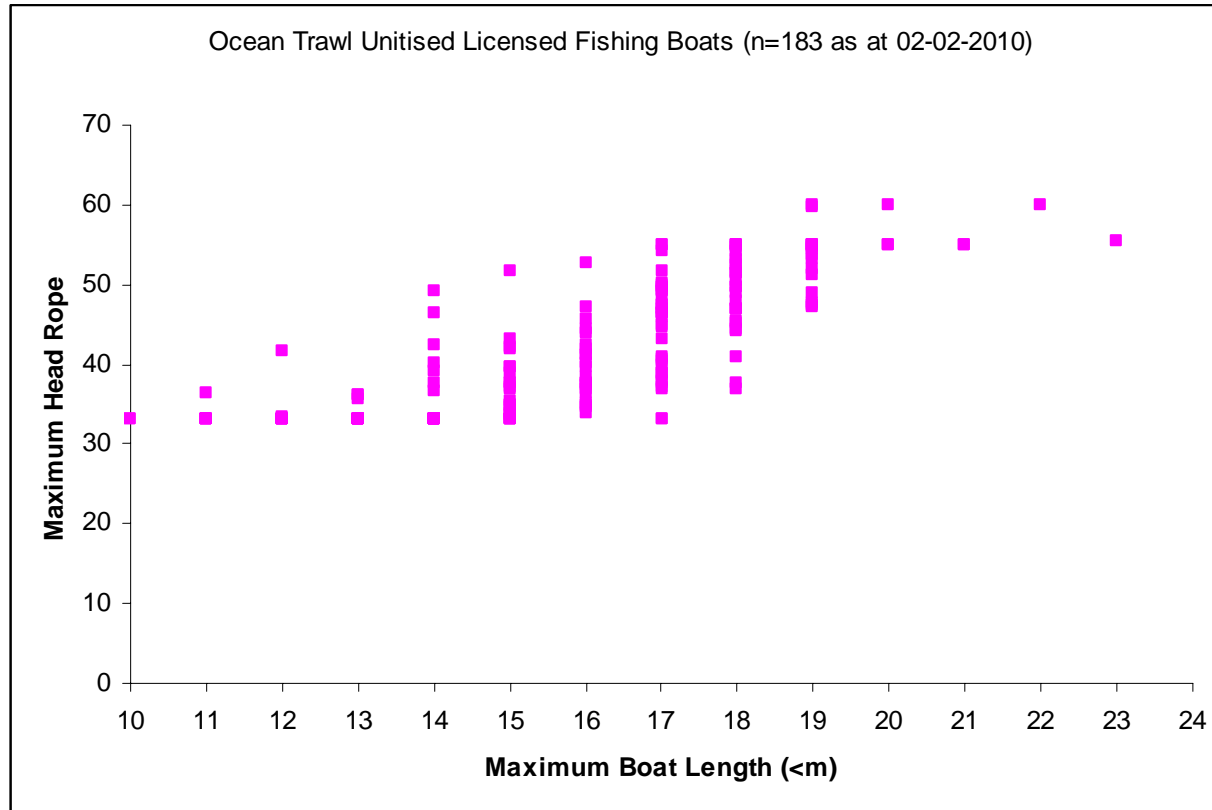


Table 11: Unitised Licensed Fishing Boats.

<b>Max Boat Length (&lt;m)</b>	<b>Max Net Units</b>	<b>Max Hull Units</b>	<b>Max Engine Power</b>	<b>Max Head Rope</b>
23	55.4	67	261	55.4
22	63.9	80	300	60
21	59.7	79	299	55
21	57.5	59	295	55
20	63.5	92	300	60
20	59	53	300	55
20	57	54	295	55
19	59.7	79	299	59.7
19	57.3	57	295	55
19	59.9	53	300	59.9
19	54.3	47	245	55
19	48.8	55	196	48.8
19	56.6	45	299	55
19	55.1	59	266	55
19	54.8	61	261	54.8
19	52	46	278	52
19	53.6	45	264	53.6
19	53.1	42	261	53.1
19	51.3	51	230	51.3
19	47.5	47	189	47.5
19	47.6	42	196	47.6
19	47.2	43	189	47.2
19	54.4	43	275	54.4
18	56.1	51	242	55
18	52.5	42	254	52.5
18	51.5	43	219	51.5
18	51.4	44	217	51.4
18	51.7	48	298	51.7
18	54.7	47	275	54.7
18	57.2	41	283	55
18	53.3	41	264	53.3
18	53	41	261	53
18	54.3	39	253	54.3
18	55	36	257	55
18	50.5	46	226	50.5
18	49.8	49	213	49.8
18	49.8	39	226	49.8
18	37.7	44	240	37.7
18	48.9	48	205	48.9
18	44.5	31	221	44.5
18	46.9	46	183	46.9
18	46.8	34	195	46.8
18	46.8	33	196	46.8
18	41	42	179	41
18	37	40	187	37
18	45.3	35	178	45.3
18	47.9	45	196	47.9
18	44.2	32	175	44.2
18	51.6	51	240	45.1

Table 11 continued: Unitised Licensed Fishing Boats.

<b>Max Boat Length (&lt;m)</b>	<b>Max Net Units</b>	<b>Max Hull Units</b>	<b>Max Engine Power</b>	<b>Max Head Rope</b>
17	55	49	295	55
17	50	53	272	50
17	54.3	37	281	54.3
17	46.5	40	189	46.5
17	54.9	32	295	54.9
17	51.7	43	243	51.7
17	48.1	47	237	48.1
17	50.3	48	221	50.3
17	49.7	37	226	49.7
17	49.6	37	226	49.6
17	49.5	36	226	49.5
17	49.3	33	226	49.3
17	49.2	32	226	49.2
17	47.3	38	196	47.3
17	47	41	189	47
17	47	36	195	47
17	45.9	39	178	45.9
17	46.4	28	196	46.4
17	46.4	28	196	46.4
17	43.1	36	175	43.1
17	44.7	32	178	44.7
17	37	32	175	37
17	38.8	28	178	38.8
17	40.9	39	147	40.9
17	44.9	33	178	44.9
17	39.9	34	147	39.9
17	39	29	147	39
17	37.9	38	131	37.9
17	38.7	27	147	38.7
17	33	32	147	33
17	37.2	30	134	37.2
17	37.6	21	147	37.6
17	30.4	34	90	33
17	40.7	38	171	40.7
17	47.5	32	205	47.5
17	40.3	36	147	40.3
16	41.8	29	164	41.8
16	36.8	17	147	36.8
16	52.7	38	261	52.7
16	47.2	37	196	47.2
16	43.8	29	176	43.8
16	42.5	33	164	42.5
16	45.6	29	187	45.6
16	44.5	26	184	44.5
16	41.2	26	164	41.2
16	40.1	24	160	40.1
16	41.2	22	168	41.2
16	39.6	24	156	39.6
16	38.5	26	176	38.5



Table 11 continued: Unitised Licensed Fishing Boats.

<b>Max Boat Length (&lt;m)</b>	<b>Max Net Units</b>	<b>Max Hull Units</b>	<b>Max Engine Power</b>	<b>Max Head Rope</b>
16	35.2	28	145	35.2
16	37.7	22	147	37.7
16	37.7	22	147	37.7
16	33.9	23	145	33.9
16	36.5	37	145	36.5
16	35	29	123	35
16	34.5	26	124	34.5
16	37.4	20	147	37.4
15	51.8	32	256	51.8
15	43.1	23	178	43.1
15	41.8	33	160	41.8
15	39.6	32	147	39.6
15	35	27	160	35
15	39.6	24	156	39.6
15	38.8	28	147	38.8
15	37.7	22	147	37.7
15	37.2	19	147	37.2
15	35.4	31	123	35.4
15	34.6	27	123	34.6
15	34.8	24	128	34.8
15	37.7	22	147	37.7
15	29.1	19	134	33
15	33.9	19	128	33.9
15	33.5	21	123	33.5
15	33.7	18	128	33.7
15	32.6	16	123	33
15	29.5	21	134	33
15	29	26	90	33
15	37	18	147	37
15	42.1	18	178	42.1
15	30.6	27	134	33
14	42.3	22	175	42.3
14	39.2	31	147	39.2
14	49.1	22	235	49.1
14	46.4	27	197	46.4
14	40.1	27	156	40.1
14	37.7	22	147	37.7
14	25.9	14	178	33
14	36.7	16	147	36.7
14	31.3	18	134	33
14	28.4	20	131	33
14	29	18	134	33
14	28.8	17	134	33
14	31.7	14	120	33
14	22.6	19	112	33
14	29	18	99	33
14	27.2	18	89	33
14	17.9	13	57	33
14	26.7	15	90	33

Table 11 continued: Unitised Licensed Fishing Boats.

<b>Max Boat Length (&lt;m)</b>	<b>Max Net Units</b>	<b>Max Hull Units</b>	<b>Max Engine Power</b>	<b>Max Head Rope</b>
14	22.8	14	76	33
14	28.6	16	99	33
13	36.1	13	147	36.1
13	36.1	13	147	36.1
13	35.6	13	144	35.6
13	20.9	13	134	33
13	28.4	15	99	33
13	28.2	14	99	33
13	28	13	99	33
13	26.7	11	95	33
13	28.6	16	99	33
13	28	13	99	33
13	27.7	11	99	33
13	21.7	16	69	33
13	21.5	13	72	33
13	30.6	16	111	33
13	29.1	8	108	33
12	33.4	16	128	33.4
12	26.8	12	95	33
12	41.6	15	178	41.6
12	25.6	11	138	33
12	26.1	10	127	33
12	28	13	99	33
12	27.9	12	99	33
12	26.4	14	90	33
12	25.6	11	90	33
12	22.8	12	87	33
11	36.5	15	147	36.5
11	27.5	15	112	33
11	25	10	89	33
11	25.3	10	88	33
11	24.2	6	90	33
11	25.3	10	90	33
11	14.3	6	51	33
10	32.6	4	136	33
10	16.5	6	59	33

Table 12: Ocean Trawl Fishery indicative proportion of total NSW reported wild harvest for a 5 Year period (March '03 - February '08) to the nearest whole percentile.

<b>SPECIES NAME</b>	<b>NSW 5 yr reported landings (tonnes)</b>	<b>Ocean Prawn Trawl sector</b>	<b>Ocean Fish Trawl sector</b>	<b>5 yr reported Ocean Trawl landings (tonnes)</b>
Boarfish	29	33%	66%	29
Bug, Balmain	279	95%	5%	279
Calamari, Southern	287	14%	83%	278
Crab, Blue Swimmer	800	6%	1%	52
Crab, Sand	49	88%	10%	48
Cuttlefish	975	79%	20%	965
Deepsea Lizardfish	21	90%	10%	21
Dory, John	124	10%	90%	124
Dory, Mirror	358	4%	96%	358
Flathead, Dusky	668	1%	2%	20
Flathead, Sand	685	36%	58%	640
Flathead, Tiger	1,008	2%	98%	1,008
Flounder, Unspecified	103	45%	53%	100
Gurnard, Red	59	6%	94%	59
Latchet	98	4%	94%	97
Leatherjacket, Unspecified	1,579	5%	21%	404
Morwong, Jackass	87	0%	58%	50
Morwong, Rubberlip	247	0%	22%	56
Mullet, Red	111	76%	17%	104
Octopus	1,544	94%	3%	1,499
Perch, Ocean	103	10%	46%	58
Prawn, Eastern King	3,234	95%		3,071
Prawn, Royal Red	264	100%		264
Prawn, School	3,042	8%		241
Redfish	279	6%	87%	260
Shark, Angel	186	17%	77%	175
Shark, Black Tip	168	16%	1%	29
Shark, Carpet	206	9%	15%	50
Shark, Fiddler	443	19%	76%	422
Shark, Gummy	169	8%	38%	77
Shark, Roughskin	42	1%	71%	31
Shark, Saw	122	5%	94%	121
Shark, Shovelnose	99	60%	35%	94
Shark, Unspecified	607	9%	5%	88
Shells	23	79%	21%	23
Silver biddy	418	1%	6%	31
Snapper	1,100	1%	2%	27
Sole, mixed	41	77%	19%	39
Squid	264	47%	8%	145
Squid, arrow	82	67%	33%	82
Stingray	125	7%	75%	103
Tarwhine	205	1%	18%	39
Trevally, Silver	1,523	0%	74%	1,128
Whiting, Sand	758	12%	1%	99
Whiting, School	6,416	70%	30%	6,415
Whiting, Stout	57	78%	21%	57
Whiting, Unspecified	24	81%	18%	24
Yellowtail	1,693	4%	6%	169
Other OT reported species	43,807	1%	1%	535
Non OT reported species	2,629			-
<b>Total OT, OTL, OH, EG &amp; EPT</b>	<b>77,241</b>	<b>16%</b>	<b>10%</b>	<b>20,084</b>