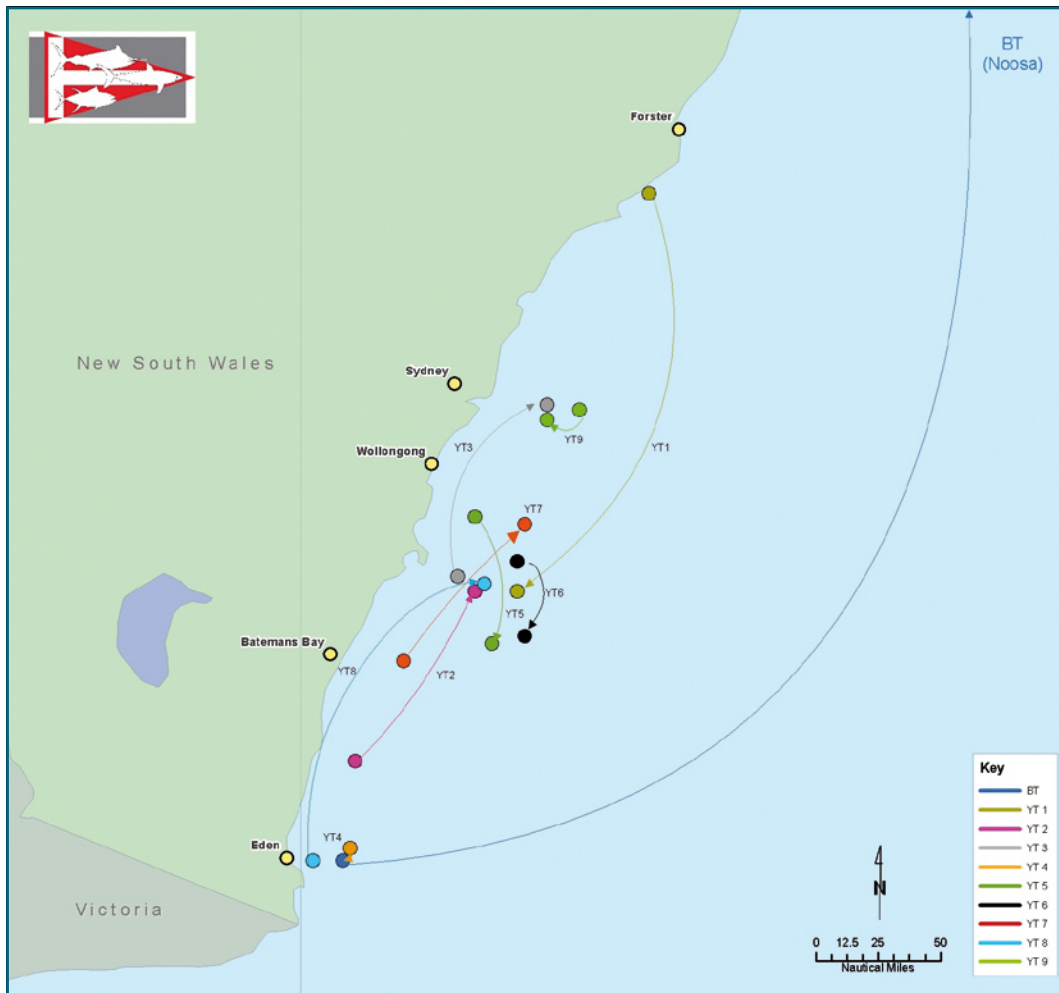


Tagging update – focus on tuna



distances moved represent straight-line distances from the point of release to the point of recapture. The fish are likely to have moved much further than the distances reported here.

The most unusual report relates to the recapture of a bigeye tuna. Originally identified and released as a juvenile yellowfin tuna from Eden, the fish was recaptured wide of Noosa by a commercial fisherman. The report, along with photos of the tagged fish, was sent through to NSW DPI, validating the species of the recapture.

This is the third bigeye recaptured in the program. At a released length of 70cm (approximately 7kg), it is the smallest bigeye ever recaptured. The fish was recaptured at a weight of 41kg after being at liberty for 1103 days, showing the typical fast growth rate of bigeye tuna. This clearly demonstrates that juvenile bigeye tuna are present at times off the NSW coast. It also illustrates that they can be difficult to identify from juvenile yellowfin tuna. (Some helpful identifying features are provided opposite).

There have been nine yellowfin tuna recaptured off NSW over the 2008 autumn/winter period. This includes five fish that were at liberty for over 12 months, with a maximum time of 829 days recorded for a fish tagged wide of Broughton Island (near Port Stephens). This fish was originally

THE NSW Department of Primary Industries Game Fish Tagging Program is the largest saltwater tagging program of its kind in the world. Several notable recaptures

have been reported within the past six months. Many of these have been yellowfin tuna, the timing reflecting their seasonal abundance off the NSW coast.

The table below provides some interesting details on some of these, including the distance the fish moved and their time at liberty. Remember, all of the

SPECIES	TAG NUMBER	RELEASE DATE	RELEASE LOCATION	ESTIMATED RELEASE WEIGHT/LENGTH	RECAPTURE DATE	RECAPTURE LOCATION	RECAPTURE WEIGHT/LENGTH	DAYS AT LIBERTY	DISTANCE MOVED	MAP REF
Bigeye tuna	A209398	09/03/05	Eden (16nm E), NSW	3.8kg /70cm	16/03/08	Noosa, QLD	41kg/129cm	1103	618nm	BT
Yellowfin tuna	A466351	24/02/06	Broughton Island, Port Stephens, NSW	8kg /80cm	02/06/08	Sussex Inlet (38nm E), NSW	120cm	829	151nm	YT1
Yellowfin tuna	A500008	11/05/08	Bermagui Shelf, NSW	10kg /70cm	03/06/08	Sussex Inlet (21nm E), NSW	81cm	23	76nm	YT2
Yellowfin tuna	A464027	25/11/06	Jervis Bay Canyons, NSW	7kg	26/05/08	Browns Mountain, Sydney, NSW	n/a	548	71nm	YT3
Yellowfin tuna	A471688	14/01/07	Eden (21nm E), NSW	15kg	18/04/08	Eden (18nm E), NSW	26kg	460	5nm	YT4
Yellowfin tuna	A469028	03/09/06	Kiama Canyons, NSW	10kg /50cm	18/06/08	Batemans Bay (56nm E), NSW	110cm	654	45nm	YT5
Yellowfin tuna	A464603	25/05/08	Shellharbour (31nm E), NSW	18kg	19/06/08	Vincentia (38nm E), NSW	95cm	25	27nm	YT6
Yellowfin tuna	A465508	20/01/07	Batemans Bay (22nm E), NSW	12kg/100cm	18/06/08	Kiama (33nm SE), NSW	116cm	515	67nm	YT7
Yellowfin tuna	A471522	13/04/08	Eden (9nm E), NSW	80cm	03/06/08	Sussex Inlet (25nm E), NSW	68cm	51	119nm	YT8
Yellowfin tuna	A455147	14/10/07	Browns Mountain (wide), Sydney, NSW	22kg/100cm	26/05/08	Browns Mountain (south), Sydney, NSW	40kg (est.)	225	13nm	YT9