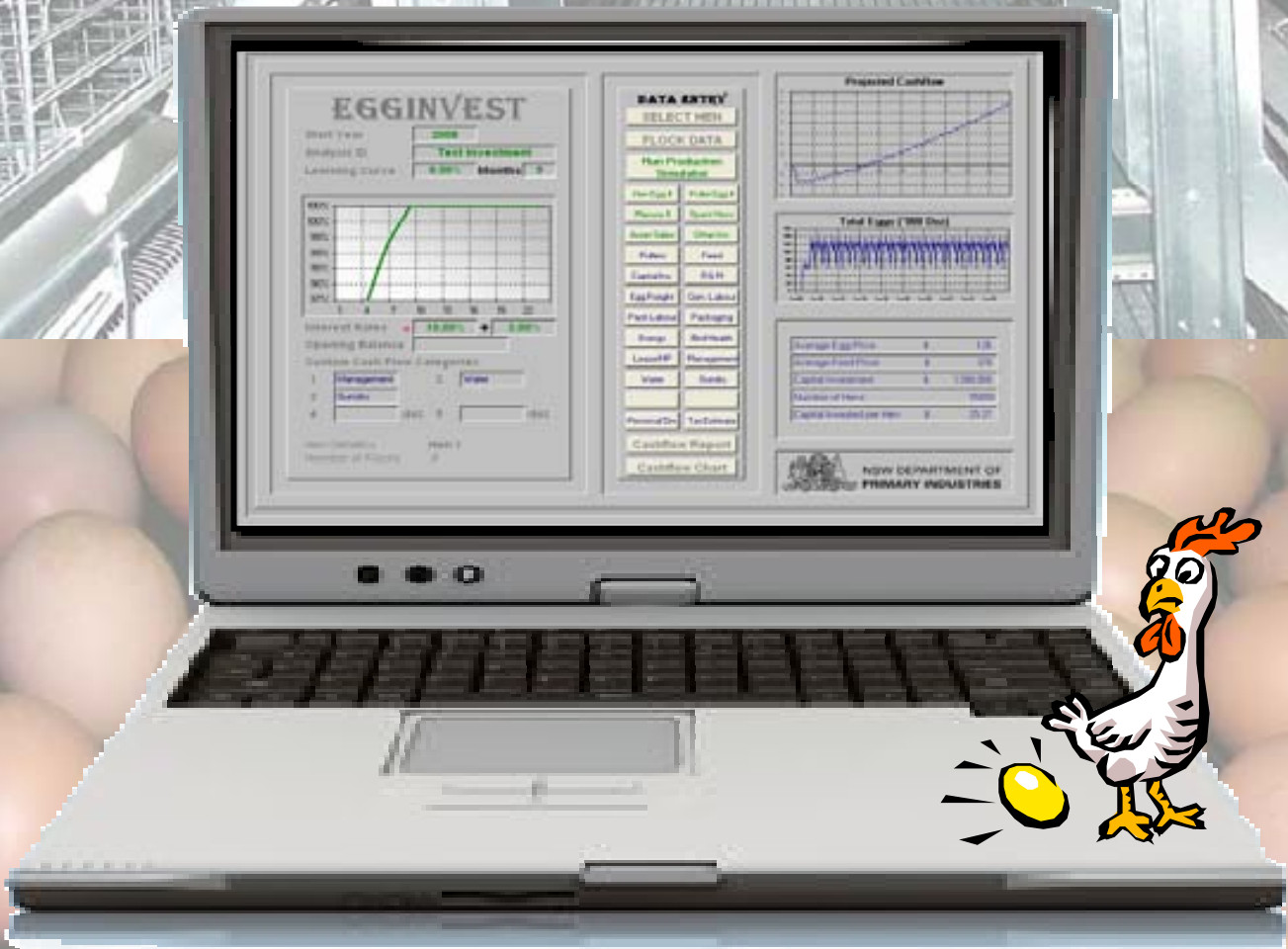


EGGINVEST

Version 1.01



Developed by

Greg Mills
Livestock Officer – Industry Development
Intensive Industries



NSW DEPARTMENT OF
PRIMARY INDUSTRIES



Table of Contents

WHAT IS EGGINVEST?	3
CONDITIONS OF USE	3
USING <i>EGGINVEST</i>	3
MAIN MENU & NAVIGATION	4
START A NEW ANALYSIS	4
SELECT A LEARNING CURVE	5
SELECT A STRAIN OF HEN	5
CREATING A CUSTOM STRAIN OF HEN	5
ENTER FLOCK DATA	6
PULLET EGG SIZE	6
RUN PRODUCTION SIMULATOR	6
ENTER FINANCIAL PARAMETERS	6
PRESET PARAMETERS	6
CUSTOM CASHFLOW CATEGORIES	7
ENTERING FINANCIAL DATA	7
INTEREST RATES & OPENING BALANCE	7
VIEW REPORTS	7
CASHFLOW REPORT	7
CASHFLOW CHART	8
TECHNICAL SPECIFICATIONS	8
4-4-5 WEEK MONTHS & 53 WEEK YEARS	8
RELEASE DATE & VERSION NUMBER	8



What is EggInvest?

EggInvest is a Microsoft Excel® spreadsheet designed to assist in the preliminary investigation of future investment in egg production.

EggInvest is not intended as a final decision making tool. It has been designed to only indicate those options which warrant further detailed investigations.

Users can adjust Lay Rate, Egg Weight, Feed Intake and Mortality from a selection of standard production curves to reflect the proposed production system. The **EggInvest** Production Simulator uses this data to predict hen numbers, egg production, egg weights and feed consumption for a 20 year period.

EggInvest can simulate production for up to 20 different sheds or flocks. This information is combined with financial budget data to develop a predicted cashflow and determine a payback period for the investment.

EggInvest has been developed in Microsoft® Excel 2003, and has not been tested in previous versions of Excel.

Conditions of Use

The **EggInvest** spreadsheet is provided by NSW Department of Primary Industries to assist egg producers and their advisers in making preliminary investigations for future investment in egg production and is based on the best information available at the time of development of the spreadsheet. NSW Department of Primary Industries does not warrant the spreadsheet is error free, or that it meets the user's particular requirements and the information it was based on may change over time. NSW Department of Primary Industries does not provide ongoing support for the spreadsheet, nor does it guarantee that it will provide details of any updates to users. However, queries may be addressed to:

Greg Mills,
Livestock Officer Industry Development,
Intensive Industries Development.
Phone (02) 6750 6312,
Fax (02) 6752 4859, email
greg.mills@dpi.nsw.gov.au

The results provided by the spreadsheet are indicative only and are dependent on the assumptions made and information supplied by the user. Any results are limited in their applicability to individual farm enterprises by a number of factors, including the limitations of the spreadsheet itself (which is not structured

to capture all the variables that may apply to a specific situation) and the accuracy and appropriateness of the information supplied by users.

The results provided by the spreadsheet are not a substitute for independent professional advice. The user relies on the results at their own risk and is advised to obtain their own independent and expert advice before making any decisions based on results obtained using the spreadsheet.

The spreadsheet is made available on the understanding that the NSW Department of Primary Industries does not accept any responsibility for any person relying on any opinion, advice, representation, statement or information whether expressed or implied by the spreadsheet or results from the spreadsheet, and disclaim all liability for any loss, damage, cost or expense incurred or arising by reason of any person using or relying on the spreadsheet or results from the spreadsheet or by reason of any error, omission, defect or mis-statement (whether such error, omission or mis-statement is caused by or arises from negligence, lack of care or otherwise).



Using EggInvest

EggInvest assumes a basic understanding of Microsoft Excel®. It assumes the user can open, print, save and rename excel files.

EggInvest generates reports and charts on budgeted egg production and the resultant cashflow of different investment options.

Caution should be applied when comparing cashflows of investments with differing return timeframes. As the value of money changes overtime, users are encouraged to seek

4

Version 1.01
13 June 2008

professional advice when comparing alternative investments with differing time frames of returns.

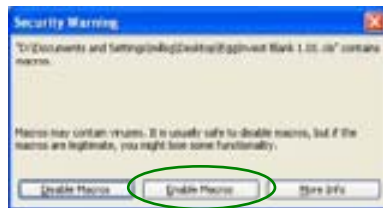
Reports in **EggInvest** can be generated by completing the seven following steps

1. Start a New Analysis
2. Select a Learning Curve
3. Select a Strain of Hen
4. Enter Flock Data
5. Enter Financial Parameters
6. Run Production Simulator
7. View Reports

Once the initial report is generated the user can change production and financial parameters to generate and review a range of investment scenarios. Each Scenario can be saved as a different file for future reference.

Main Menu & Navigation

EggInvest utilises Excel® macros to perform calculations and allow navigation throughout the model. It will be important to **Enable Macros** when prompted as you open an **EggInvest** file.

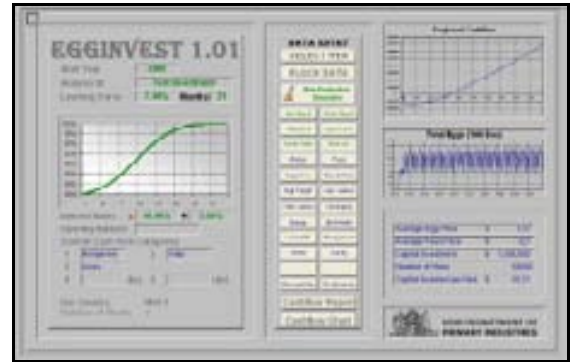


It may be necessary to set your macro security level to Medium if Excel® does not give you the options to **Enable Macros**. Type 'security' into Excel® Help if you need instructions on how to do this.

To access **EggInvest** users must first accept the terms and conditions of use. Once accepted the user can enter the **Main Menu** of **EggInvest**.



The **Main Menu** allows users to enter key data, navigate throughout the program and review preliminary output.



Users can return to the **Main Menu** at any time by pressing **Ctrl+m**.

Users can navigate throughout **EggInvest** by using the mouse to click on any of the buttons displayed on the various screens of **EggInvest**.



As production data is changed in **EggInvest** reports will not update until after the running of the **Production Simulator**.



The appearance of question marks (?) over charts and output on the **Main Menu** indicates that it is necessary to run the **Production Simulator** before reviewing output.

Some navigation buttons will also become unavailable while the question marks are present.

Start a New Analysis

It is recommend that before commencing a new analysis the file is saved with a new name which can be used for later reference.

To commence an analysis it is necessary to select the **Start Year** by selecting the appropriate year from the drop down menu^o. The 20 year analysis will start in January of the year selected.



The analysis is identified by entering an **Analysis ID**^o. This will be printed on reports to identify the analysis.

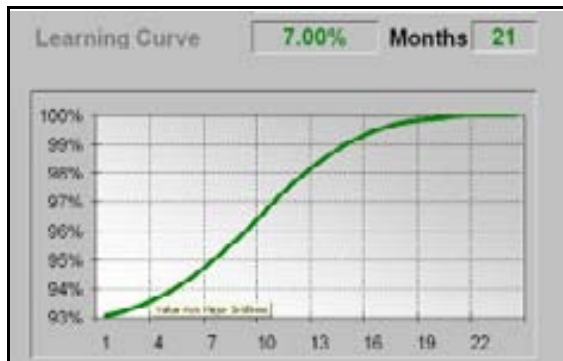
5

Version 1.01
13 June 2008

Select a Learning Curve

In the early stages of production there may be a learning phase where minor adjustments are required until full productivity is achieved. The Learning Curve concept in **EggInvest** allows users to discount the hen lay rate during this learning phase

By entering a **Percentage** and **Number of Months** the **Production Simulator** will adjust the hen lay rate from the discounted percentage up to 100% over the time specified.



The user can select any percentage and 3, 6, 9, 12, 15, 18, 21 or 24 months. The resultant percentage discount is displayed graphically on the **Main Menu**.

Select a Strain of Hen

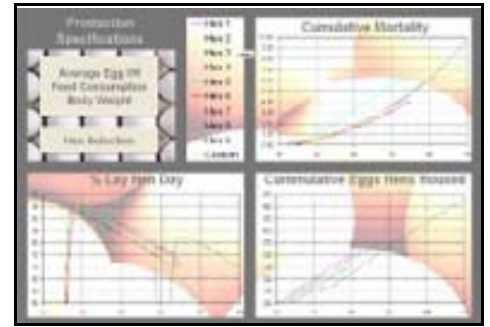
The user can select the strain of hen used for the analysis by clicking on the **SELECT HEN** button on the **Main Menu**.

The user can select from nine preset hen strains or create a custom strain using one of the nine preset hens as a template.

The screenshot shows the 'Hen Selection' screen. At the top, it says 'Current Selection: Hen 2'. Below this is a table with columns for 'Strain', 'Age In (Weeks)', 'Age Out (Weeks)', 'Laying Period (Weeks)', 'Peak Production (Eggs/Week)', 'Total Production (Eggs)', 'Feed Conversion Ratio', 'Mortality (%)', and 'Weight (kg)'. There are nine rows of data representing different hen strains. Above the table, there are buttons for 'NEW STRAIN', 'NEW STRAIN', and 'SELECT HEN'. There are also some input fields and a 'View Chart' button.

The **Hen Selection** screen shows a summary of the hen strains available. The hen strain can be selected by using the mouse to click in the circle above the desired strain.

More detail on each of the stains can be gained in a graphical format by selecting either of the **View Chart** buttons.



It is important that the hen strain selected has a data range of Age In and Age Out which matches the data entered in **Flock Data**. If these do not match a warning message will appear and the **Production Simulator** will not run until this mismatch is corrected.

Creating a Custom Strain of Hen

If one of nine common commercially available strains of birds in **Hen Selection** does not meet the users requirements, or the data does not extend for the required period, the user can create a customised set of data.

To create a custom hen first select a hen to use as a template and use your mouse to select the **Create Custom** button

The user can modify and add to this data as appropriate to create a hen profile that better suits the needs of the analysis.

The screenshot shows the 'Edit Custom' screen. It features a table with columns for 'Week', 'Production (Eggs/Week)', 'Feed Conversion Ratio', 'Mortality (%)', and 'Weight (kg)'. The table has 28 rows of data. Above the table, there are input fields for 'NEW STRAIN', 'NEW STRAIN', and 'SELECT HEN'. There are also some buttons and a 'View Chart' button.

The user can return to this custom hen data by selecting **Edit Custom** from the **Select Hen** screen.



6

Version 1.01
13 June 2008

Enter Flock Data

EggInvest will generate a 20 year production profile for up to 20 different flocks of hens. The lay rate, egg weight, feed intake and mortality for each batch can be adjusted from the standard hen that has been selected.



For example if the user believes that the use of advanced climate control systems would reduce the feed intake per day by 3%, -3% would be entered for that flock. If the flock was a free range flock and the user felt the feed intake would increase, the user could enter, say 4%.

Data Required

- Flock No** Text that identifies the flock e.g. shed/barn number.
- In Date** the dates on which hens enter the shed.
- Age In (Weeks)** The age of the hens, in weeks, when placed in the shed.
- Age Out** The age of hens, in weeks, when hens are removed from the shed
- Down Time** The time in weeks the shed is empty between groups of birds.
- Hens Housed** Number of hens at the start of the batch
- Adjustments** Percentage adjustments can be applied to **Lay Rate**, **Egg Weight**, **Feed Intake** and **Mortality**. This will adjust the parameters relative to the standard hen that has been selected.

It is important that the **Age In** and **Age Out** are within the range of the hen strain that has been selected. If these do not match the **Production Simulator** will not run until the mismatch is corrected.

Pullet Egg Size

The weight which distinguishes pullet and hen eggs is set in the **Pullet Egg Price** Screen which can be accessed from the **Main Menu**.



Run Production Simulator

As production data is changed in **EggInvest**, reports will not update until after the running of the **Production Simulator**. The appearance of question marks (?) over charts and output on the **Main Menu** indicates that it is necessary to run the **Production Simulator** before reviewing output. Some navigation buttons will also become unavailable while the question marks are present.



The production simulator will use the selected hen strain and Flock Data to determine the egg production, feed consumption and other associated parameters for a 20 year period.



Enter Financial Parameters

Preset Parameters

A number of preset and customised financial parameters relating to the development and ongoing production cost can be entered.

The preset financial parameters are

8

Version 1.01
13 June 2008

Cashflow Chart



The Cashflow chart displays the projected Cashflow generated from the production and financial information that has been entered. This is displayed as the baseline on the chart. The second 'Adjusted' line shows the resulting cashflow from a percentage change in feed and egg prices.

The feed and egg prices can be changed by clicking on the up & down spinners in the top right of the chart



Technical Specifications

4-4-5 Week Months & 53 Week Years

To convert weekly production data in to monthly cashflows the **Production Simulator** use a pattern of 4-4-5 to attribute the weeks to months.

Month	Weeks
January	4
February	4
March	5
April	4
May	4
June	5
July	4
August	4
September	5
October	4
November	4
December	5

As there is not exactly 52 weeks in a year the **Production Simulator** will incorporate a 53 week year when necessary to account for this. In these years November will be treated as a 5 week month.

Release Date & Version Number

Version 1.01
13 June 2008

