



Electrical Engineering Safety Industry Performance & Projects

John Francis Waudby
Senior Inspector of Electrical Engineering
Mine Safety Operations

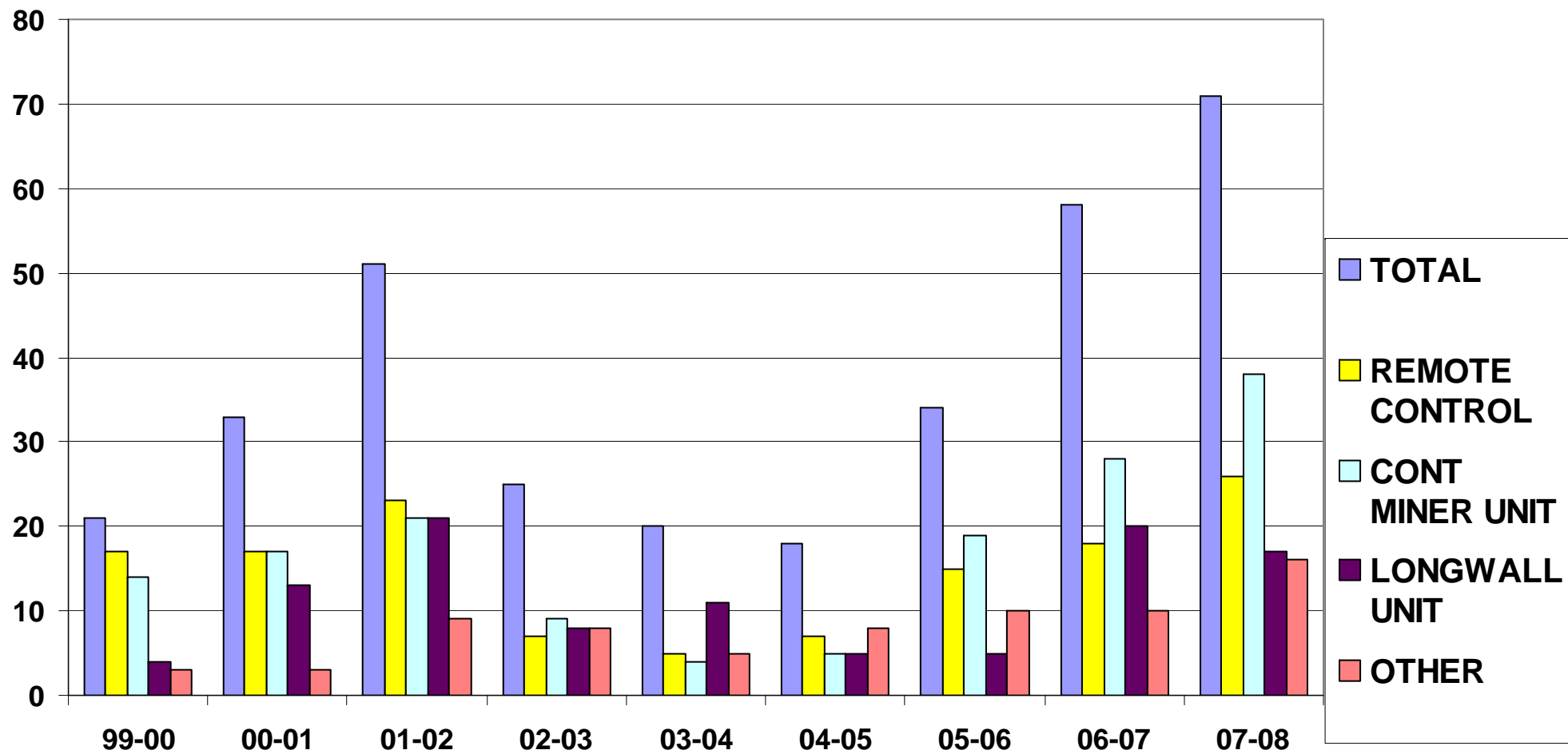


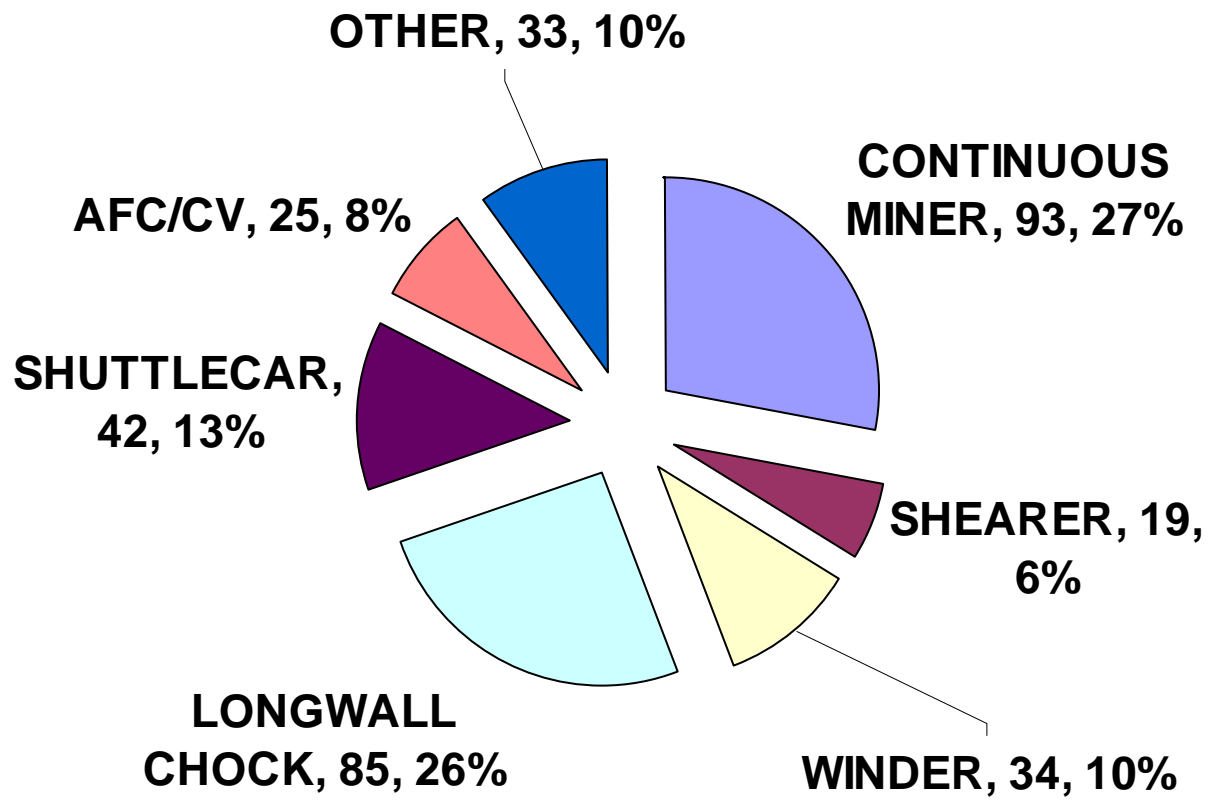


UNPLANNED MOVEMENTS

ELECTRICAL, ELECTRO/HYD/MECH
CAUSATION



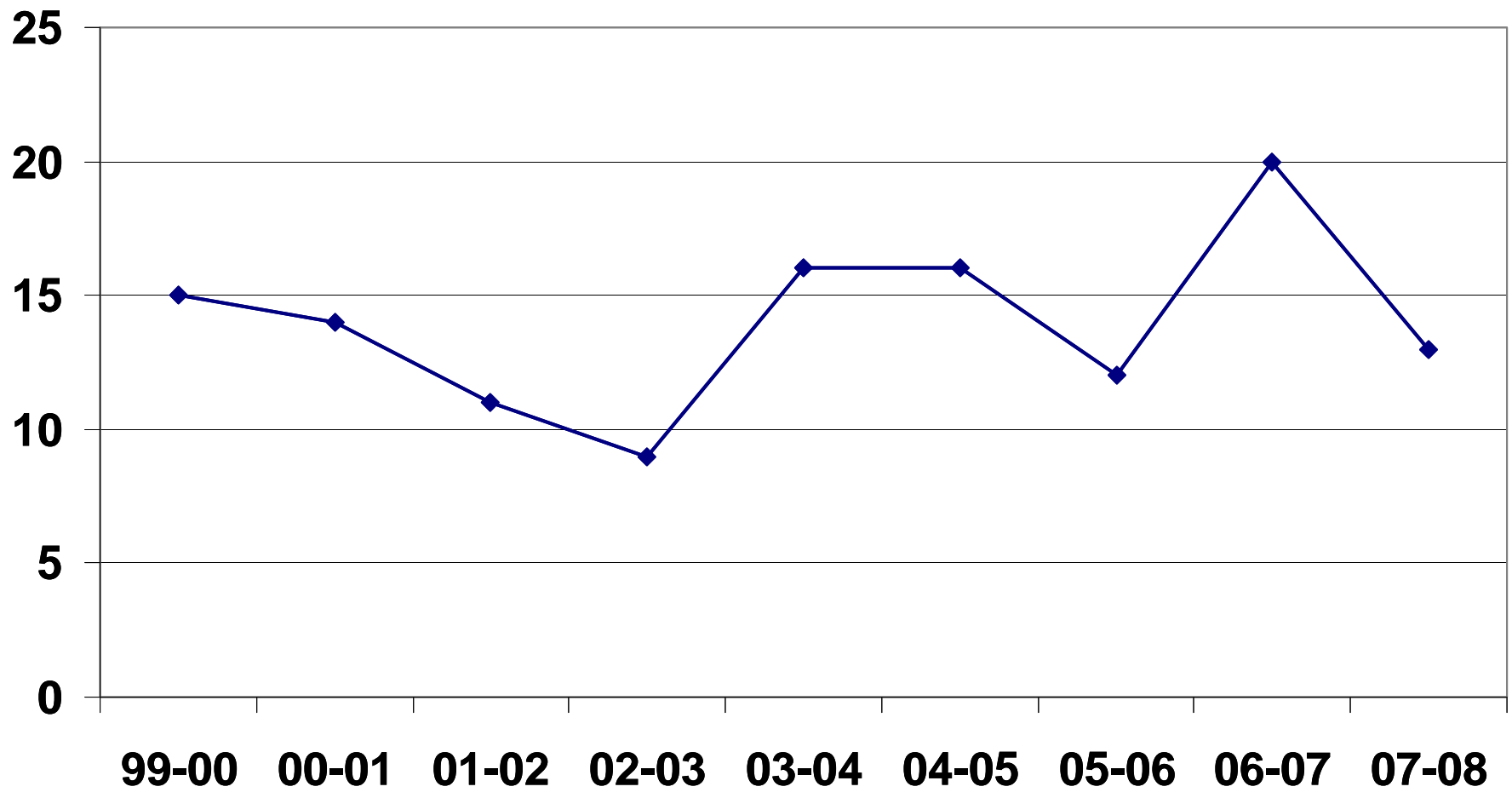


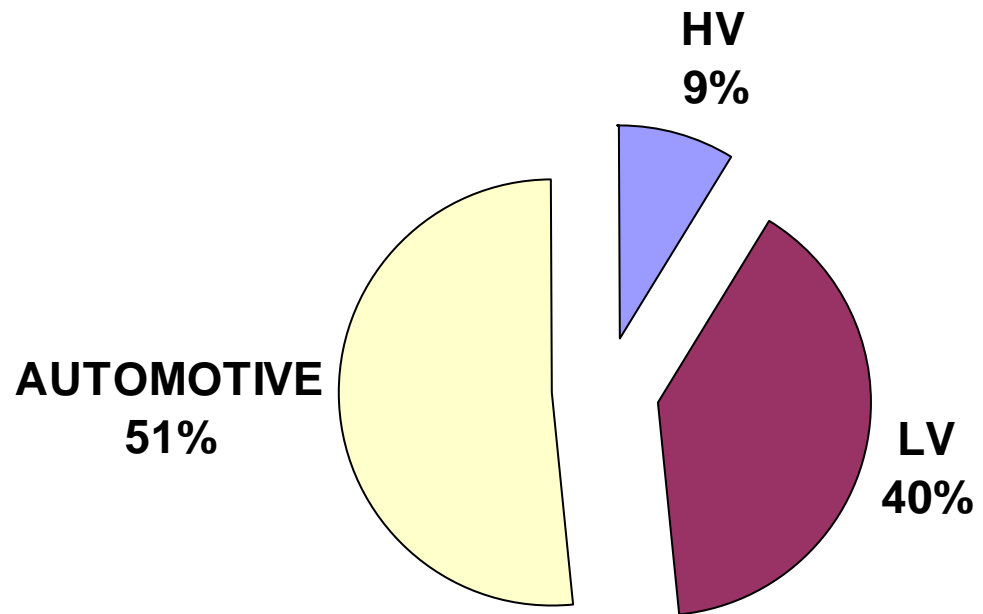




FIRES

ELECTRICAL CAUSATION

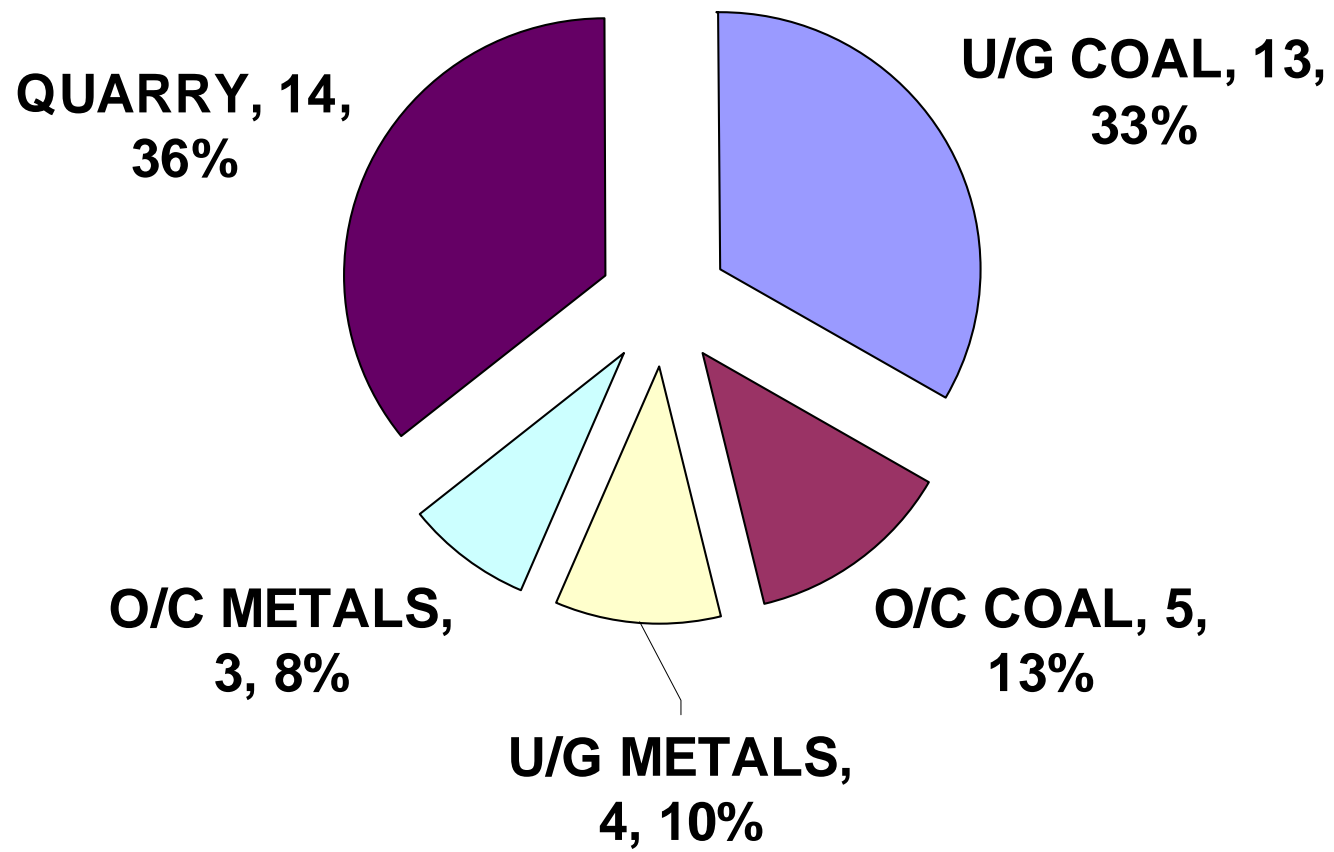






CONTACT WITH HV EQUIPMENT

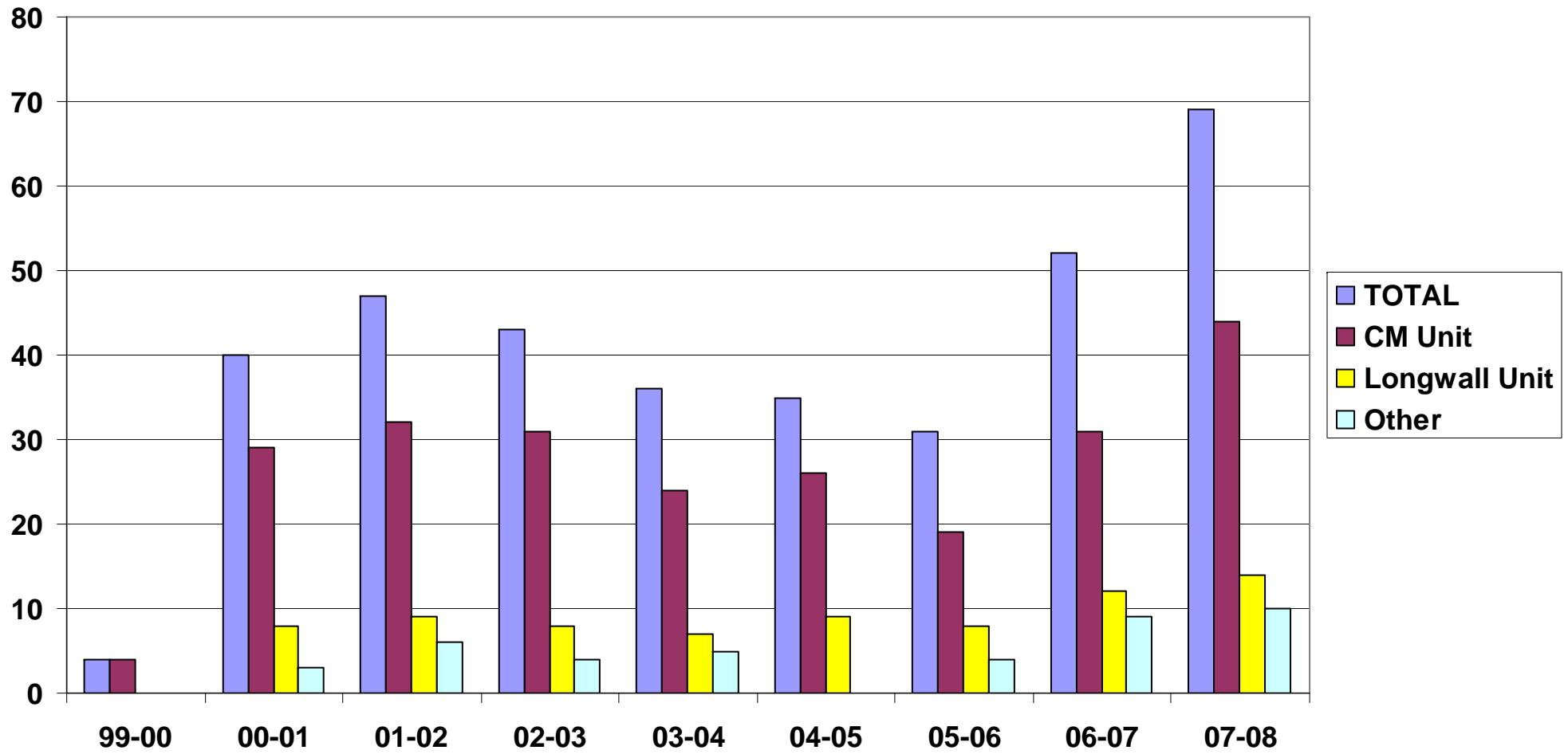


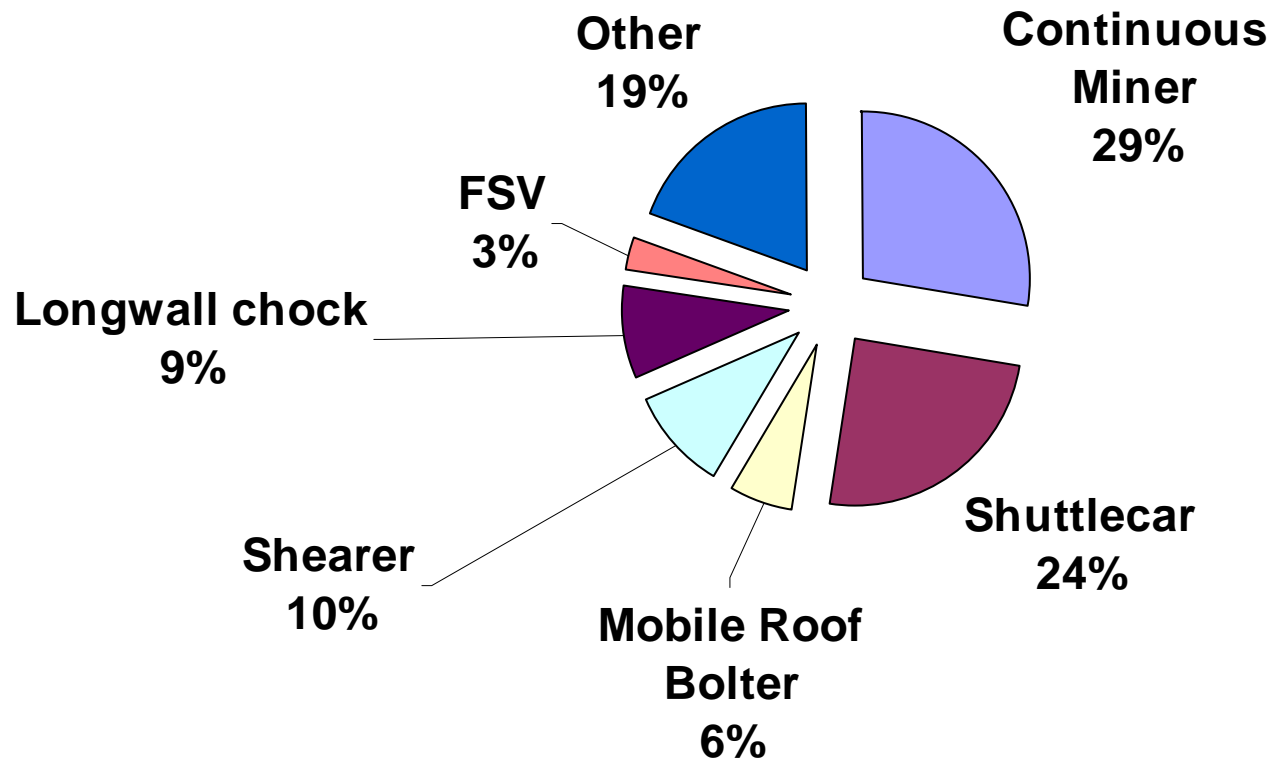




HAZARDOUS ZONES

Failure of Ex Plant







HAZARDOUS ZONES

Cable damage and arcing

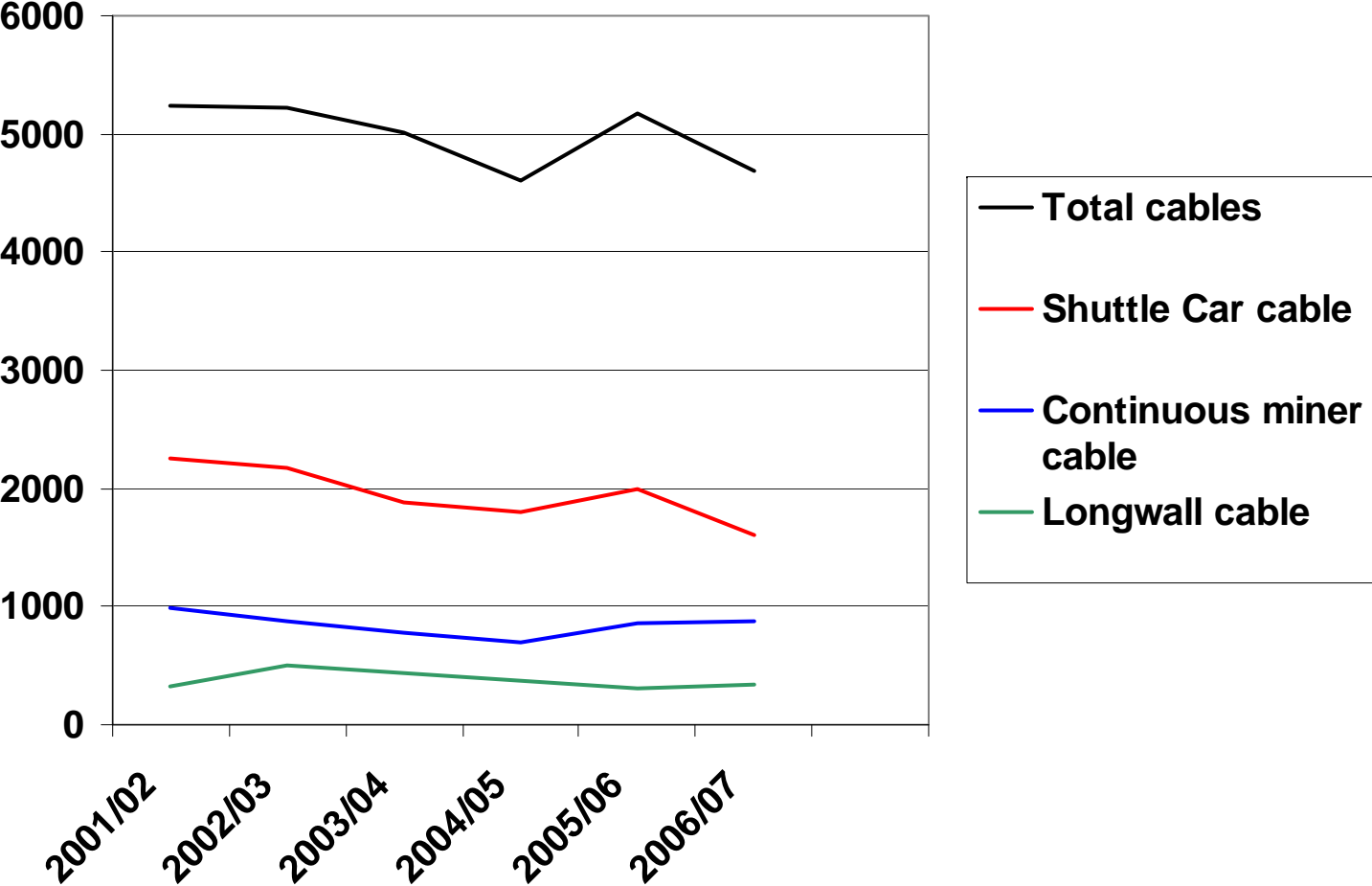


HAZARDOUS ZONES

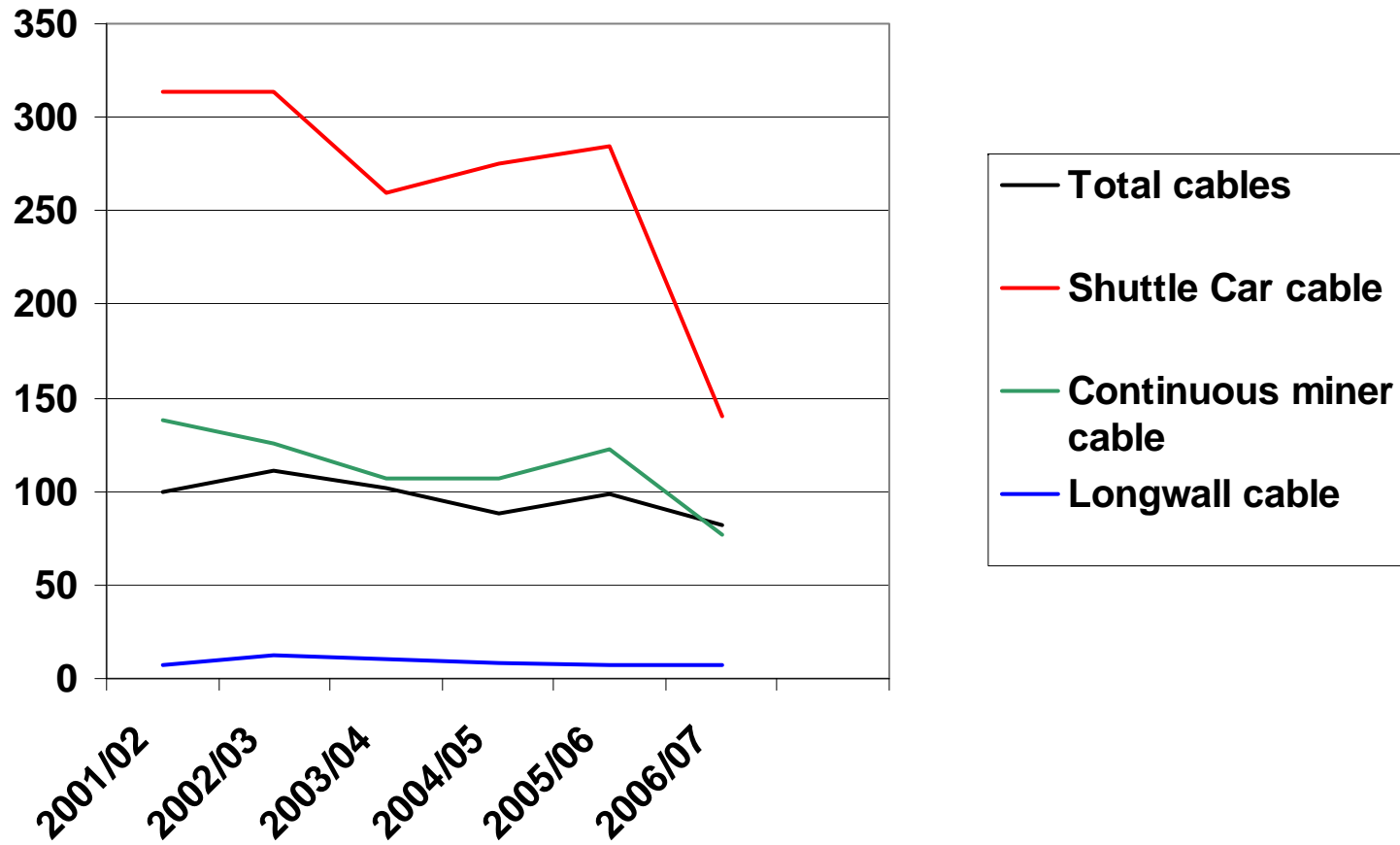
Cable damage



NUMBER OF CABLE DAMAGE



CABLE DAMAGE /MILLION TONNES

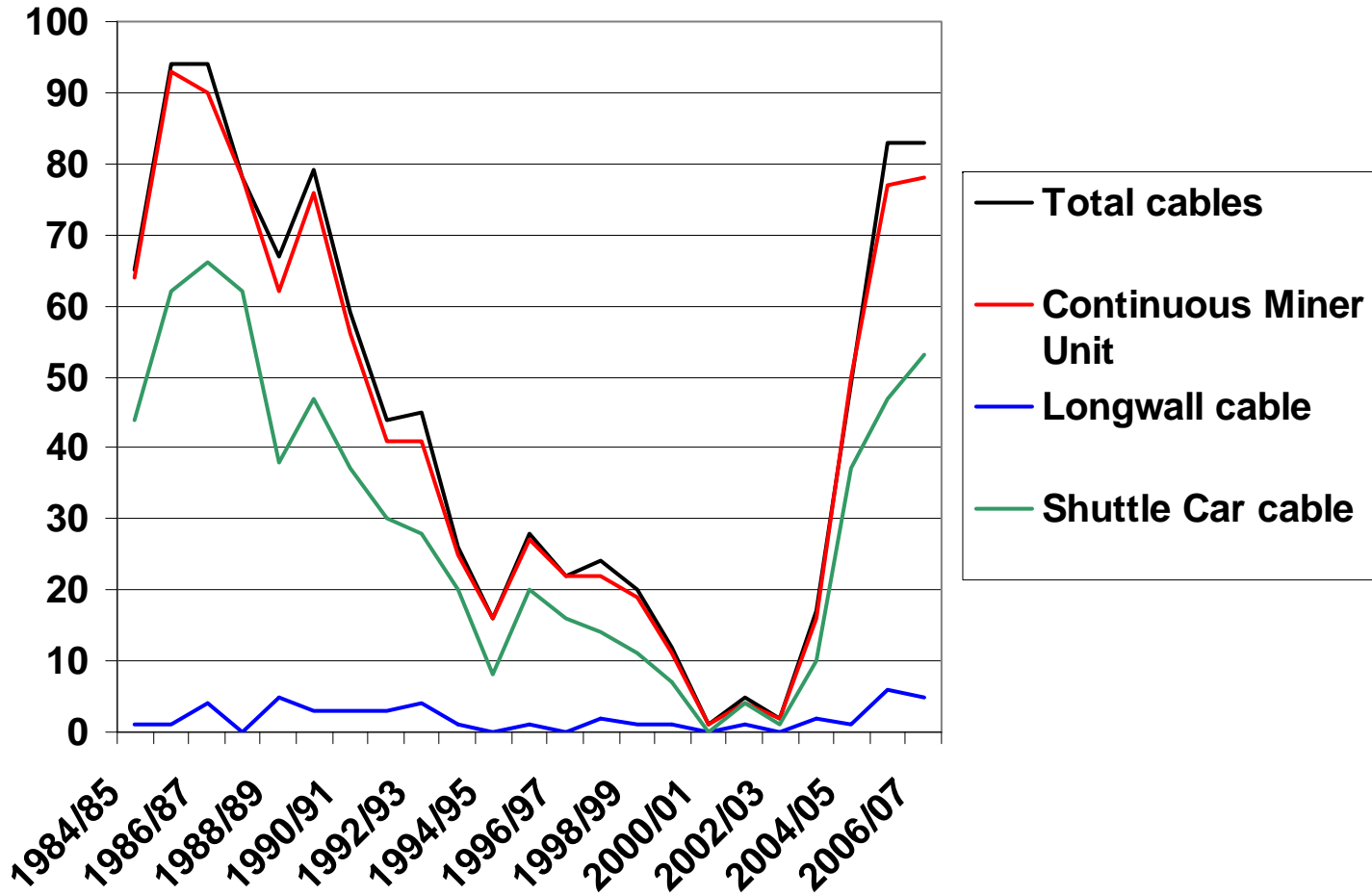




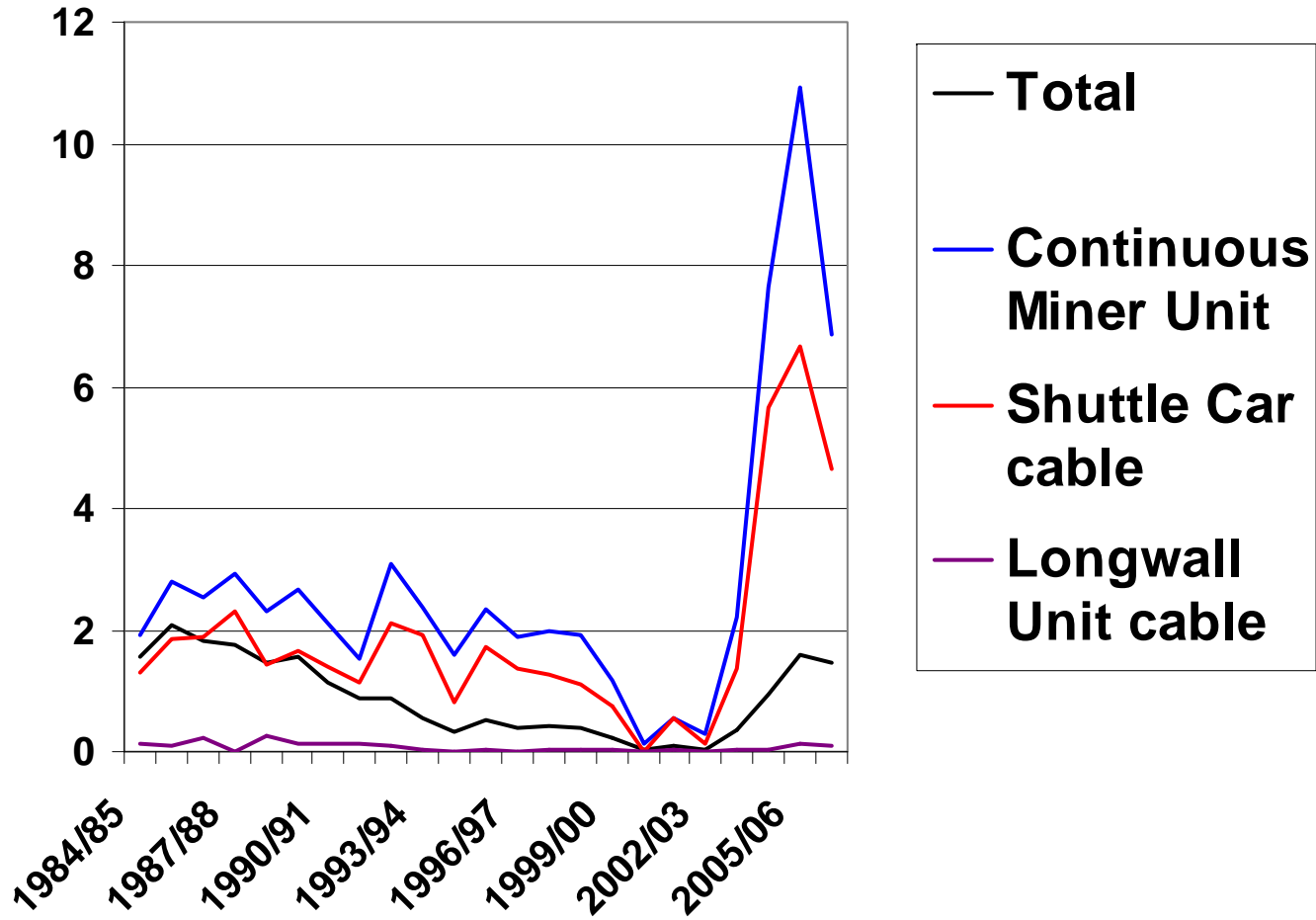
HAZARDOUS ZONES

Reported incidents - Cable arcing

Number of reported arcs



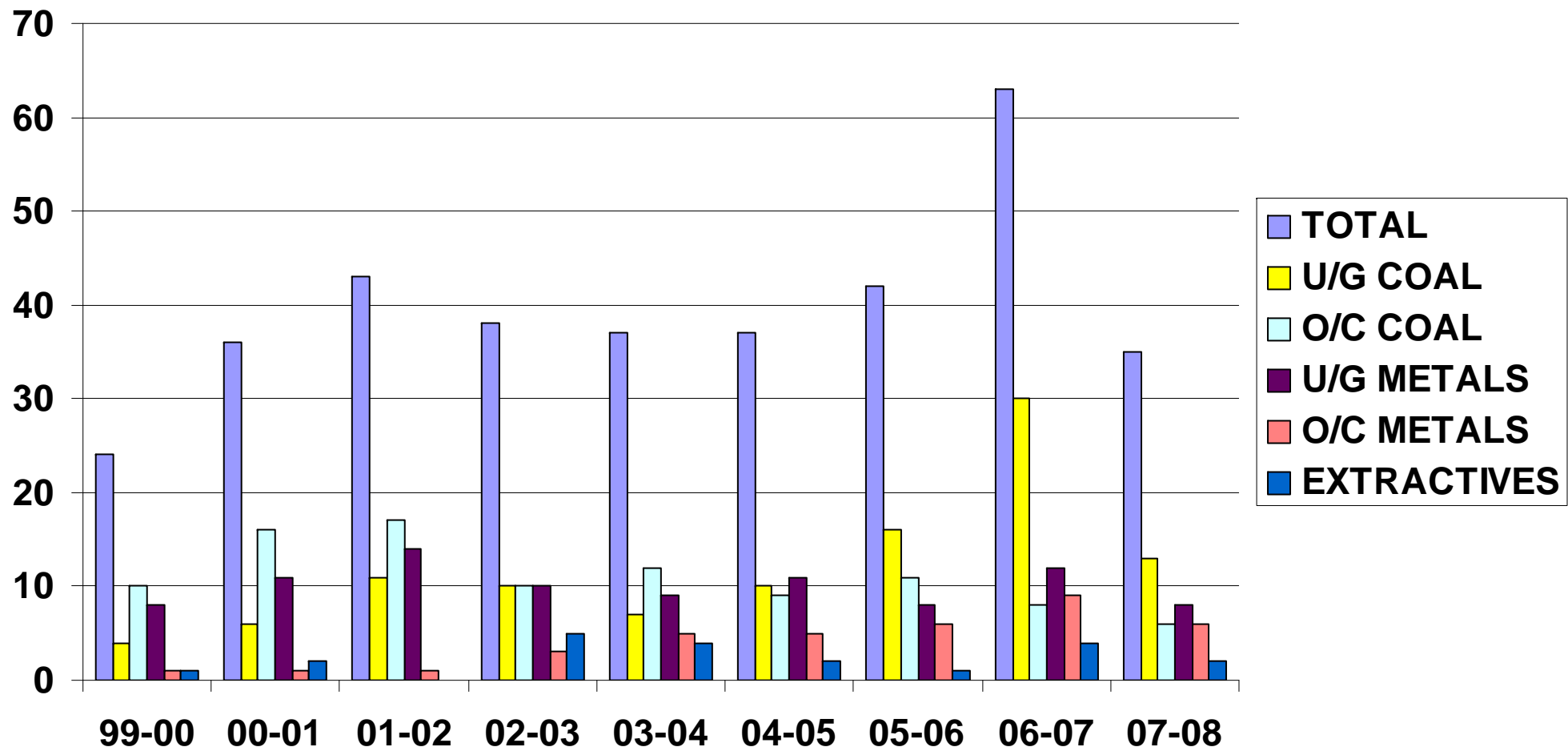
Reported arcing incidents / million tonnes



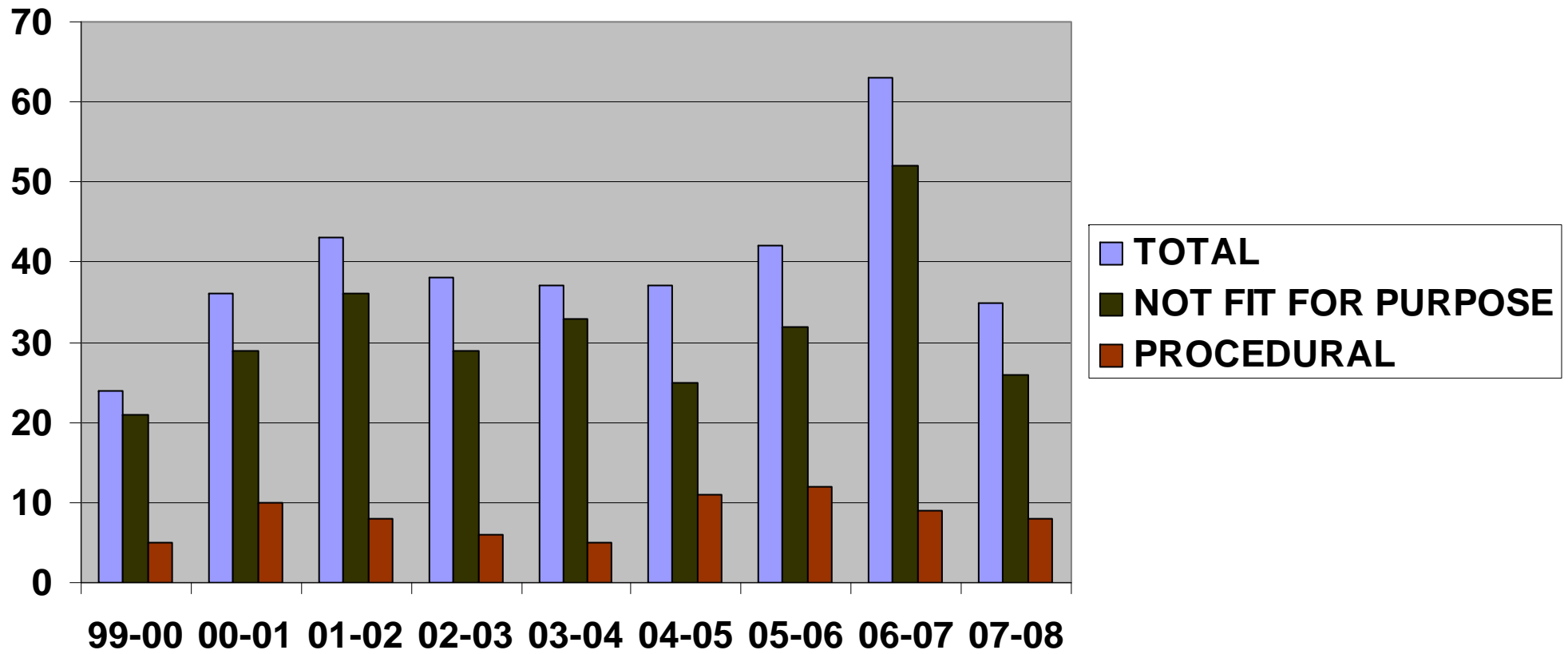


ELECTRIC SHOCKS

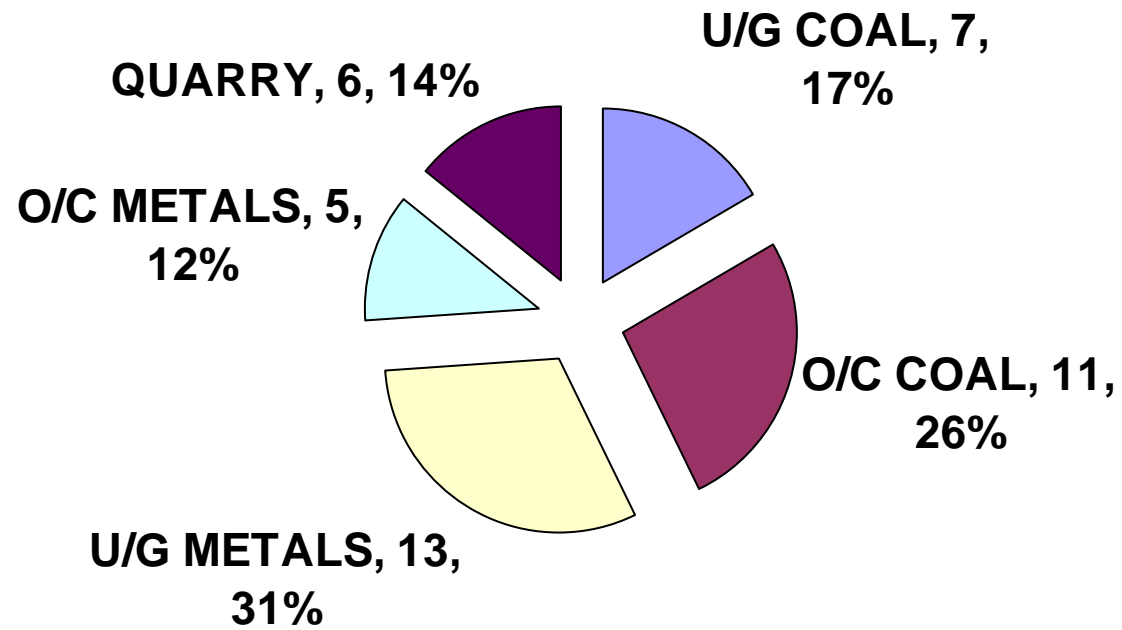




ELECTRIC SHOCK CAUSAL FACTOR



WELDING ELECTRIC SHOCKS 1999-2008





Projects



Group I I.S. parameters

Cable repairs



Mine Winders

Quarries



Transition to Certification

Gas detector registration

Lithium batteries



Electrical Engineers Competency and CPD



Conclusions



EES performance is variable.

Elec Eng has influence = improvement



Elec Eng has little influence = no improvement

The DPI aims at a sustained improvement in EES

