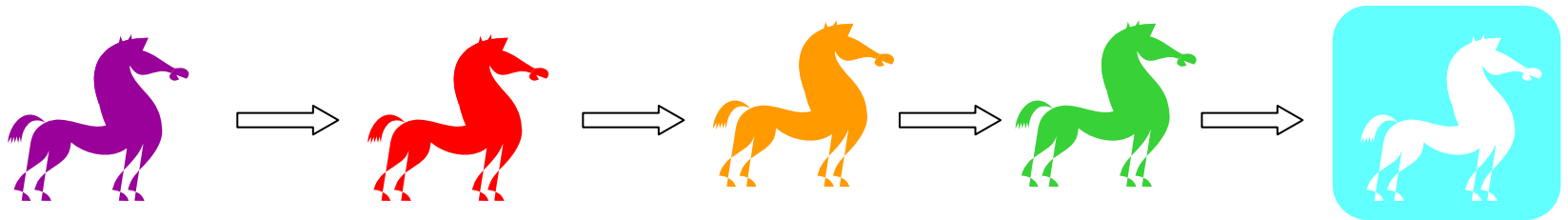

Turning the Map White



Demonstrating Freedom from Equine Influenza on
an Zone by Zone basis across NSW

Presentation by Graham Wilson

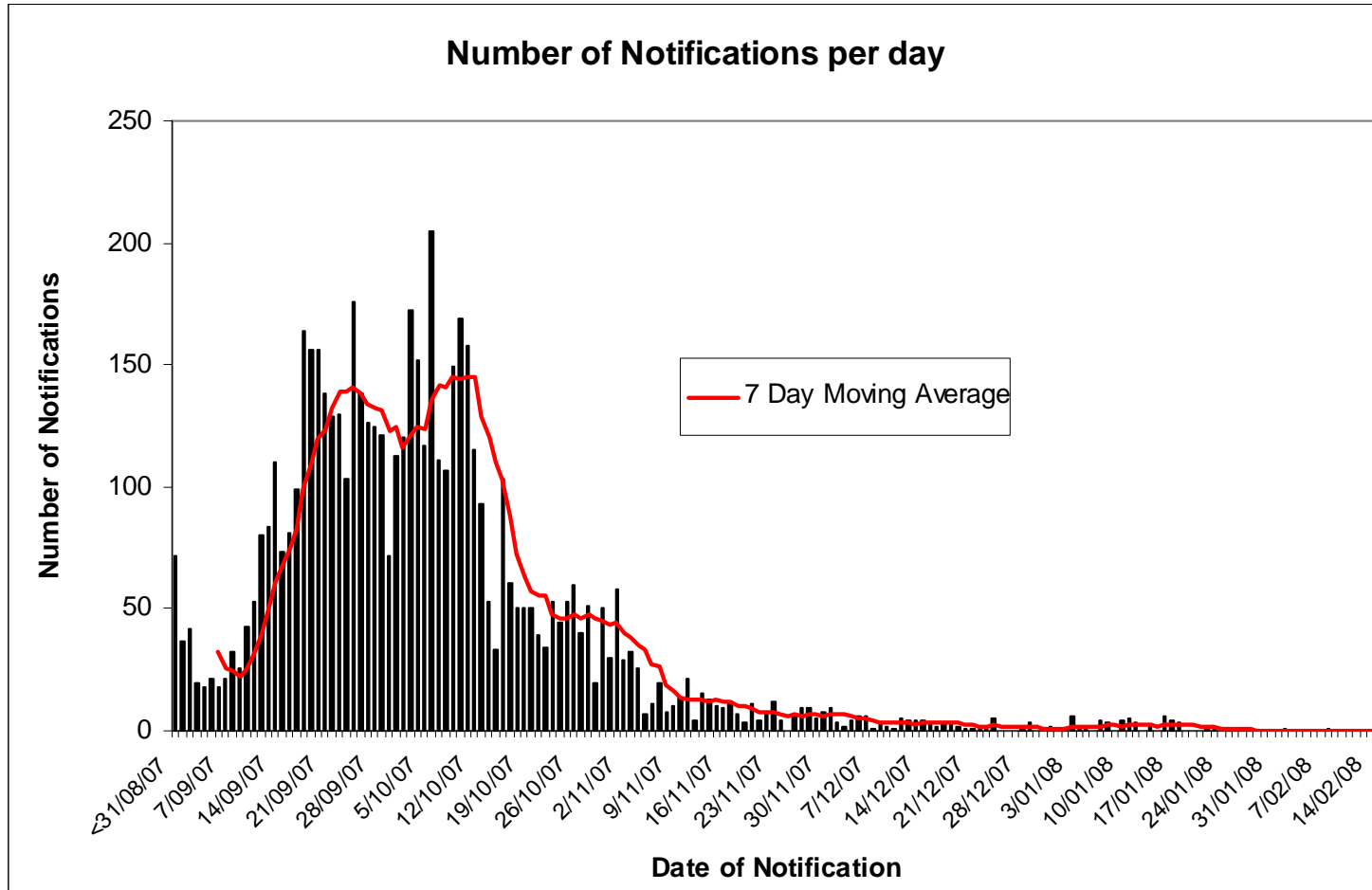

BIOBROKERS Pty.Ltd

Steps in Demonstrating EI Eradication

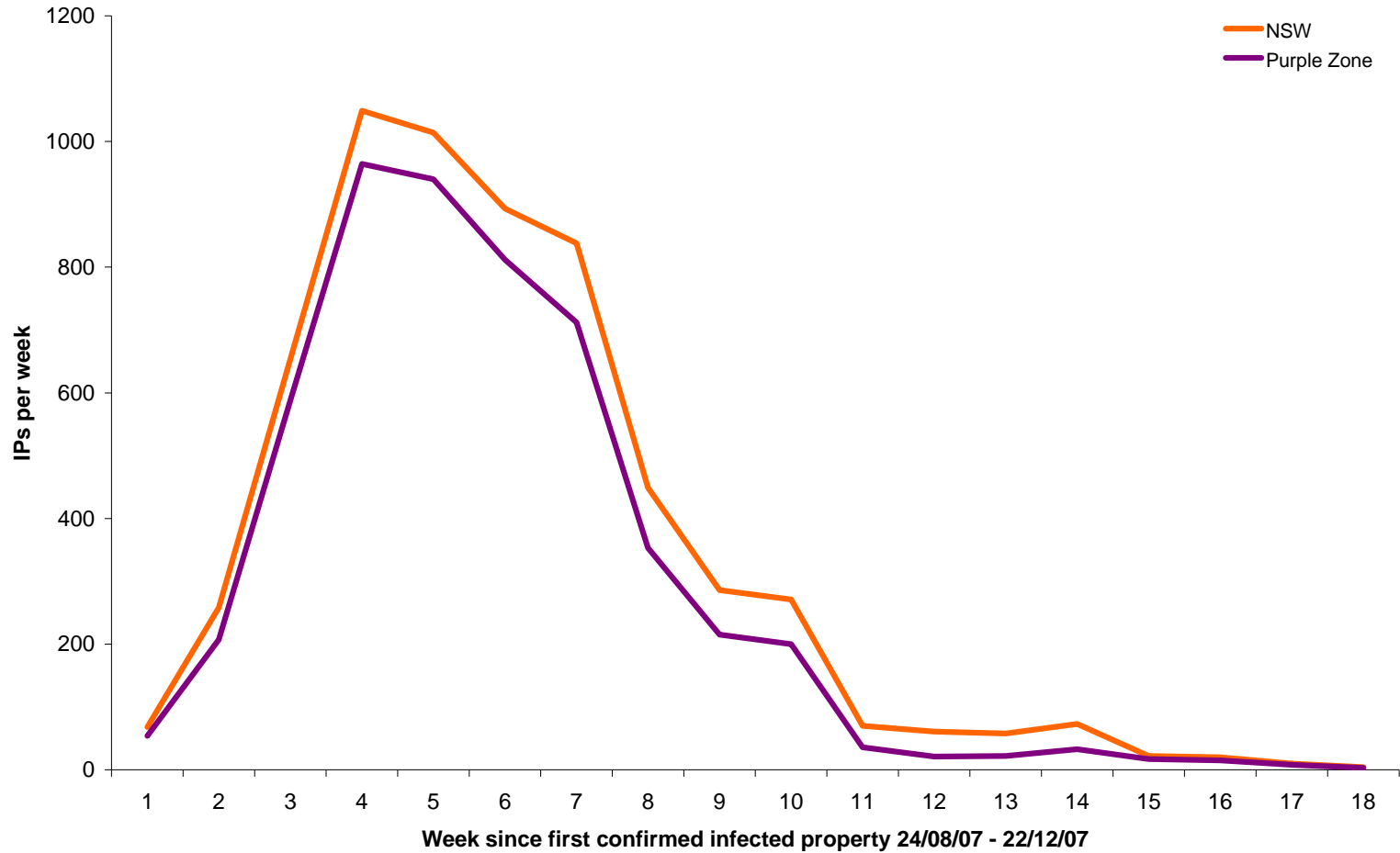
- Contain the EI outbreak - movement, biosecurity and barrier control
- Break the EI transmission cycle – natural immunity and vaccination
- Number of new EI Cases falls to a very low level
- Resolve all Infected, Dangerous Contact and Suspect Premises
- Surveillance to Demonstrate Viral Absence
- Proof of freedom case region by region and zone by zone
- Zone status progressively moves to Amber, Green and White



Level of Suspect EI Notifications



Number of new IPs/week in NSW and the Purple Zone



Breaking the EI Transmission Cycle

Aim – ensure that EI cases had low chance of causing new infection: using physical separation, biosecurity and immunity in nearby horses (both natural immunity and vaccination)

Aim - ensure existing properties with EI resolved – about 7000 IPs, DCPs and SP's resolved by a combination of 44 day testing and 60 day time interval

IMMUNITY WITHIN THE PURPLE ZONE-ANEMIS LDCC DATA (Data as of 22/02/2008)				
Division	Infected Premises	Vaccinated Premises (Tasked R2)	Horse Premises	% Immune Premises
Tamworth	552	584	1284	88.5
Scone	368	555*	829	100*
Lower Hunter	1049	1015*	3138	73.3*
Central Coast	263	791	1382	76.2
NW Sydney	1995	570	3005	85.7
SW Sydney	973	378	1977	68.3
Total	5200	3893	11615	78.2



Level of Natural Immunity

Horse Populations and Proportions of Infected Horses by Division
corrected for metropolitan horse owners

Location	Average No of Horses per IP property	Average No of Horses per Vaccinated Property	No of IP as a % of IPs and V status properties	No of horses on IPs as a % of horses on IP and V status properties
Tamworth	7.80	6.61	50.2%	54.3%
Scone	29.71	12.02	54.0%	74.3%
Lower Hunter	8.82	4.52	45.6%	62.1%
Central Coast	6.27	5.47	25.9%	28.6%
NW Sydney	5.48	2.83	81.4%	89.5%
SW Sydney	9.82	3.94	72.1%	86.5%
Purple Zone	8.97	5.39	58.5%	70.1%



Zone Progression Outside the Purple Zone & Buffers

Stage 1 - Red to Amber Progression Cases

A large number of red to amber zone progression cases were prepared including :

Armidale and Uralla

Dubbo and Wellington

Grenfell

Gunnedah

Millie

Narrabri

Parkes and Forbes

Walcha

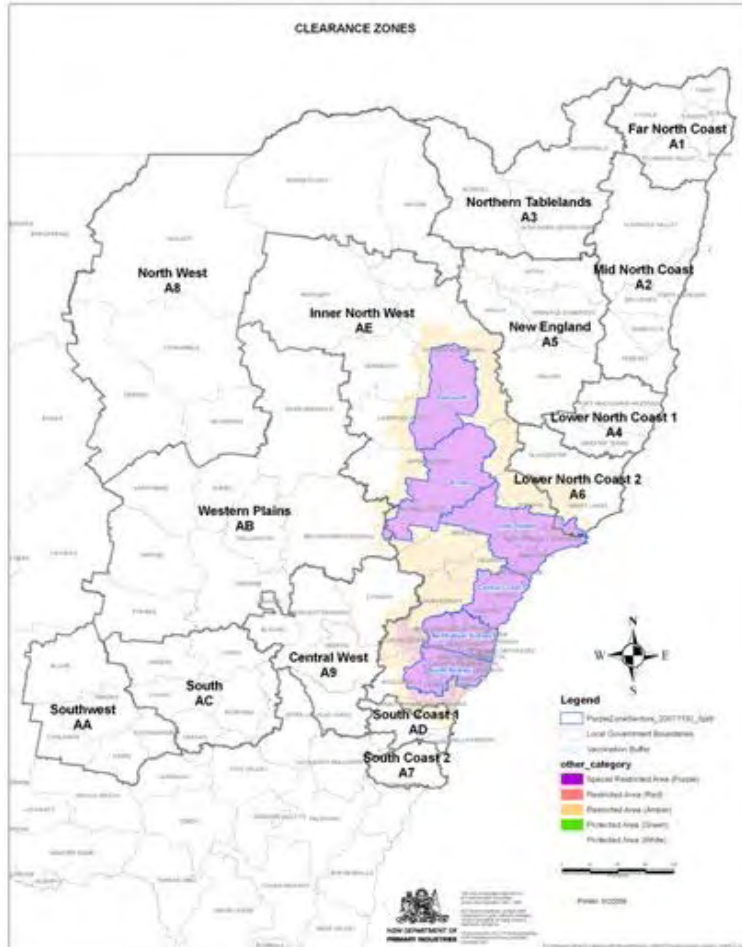
Young and Crowther

Each required assembly of a large volume of data to demonstrate the absence of IPs, DCPs and SPs, the presence of appropriate buffer zones, high levels of surveillance and negative testing



Zone Progression Outside the Purple Zone

Stage 2 – Amber to Green Progression



Amber to Green Testing/Surveillance Summary					
ID	Shire	Required Numbers	Sampled	Results	
				Pos	Neg
A1	Far North Coast	60	63	0	63
A2	Mid North Coast	60	64	0	64
A3	Northern Tablelands	60	64	0	64
A4	Lower North Coast 1	60	65	0	65
A5	New England	60	66	0	65
A6	Lower North Coast 2	60	61	0	61
A7	South Coast 2	60	61	0	61
A8	North West	60	62	0	62
A9	Central West	60	67	0	67
AA	South West	60	63	0	63
AB	Western Plains	60	75	0	75
AC	South	60	88	0	88
AD	South Coast 1	60	64	0	63
AE	Inner	60	69	0	69
AF	Hawkesbury	30	30	0	30
Totals		870	962	959	



Random PCR Survey of Purple Zone - Demonstrating Viral Absence

Purple Zone Property Random PCR Survey				
ID	Division	Properties Sampled	Horse Numbers tested	Property Results (Negative)
TW	Tamworth	316	1646	316
SC	Scone	314	4209	314
LH	Lower Hunter	315	1487	315
CC	Central Coast	321	1827	321
NW	NW Sydney	324	1712	324
SS	South Sydney	321	1750	321
Totals		1911	12631	1911



Other Combined Surveillance

Additional testing in the period after 1st January 2008 investigated the EI status of a further 16,000+ horses across the Purple Zone with negative results.

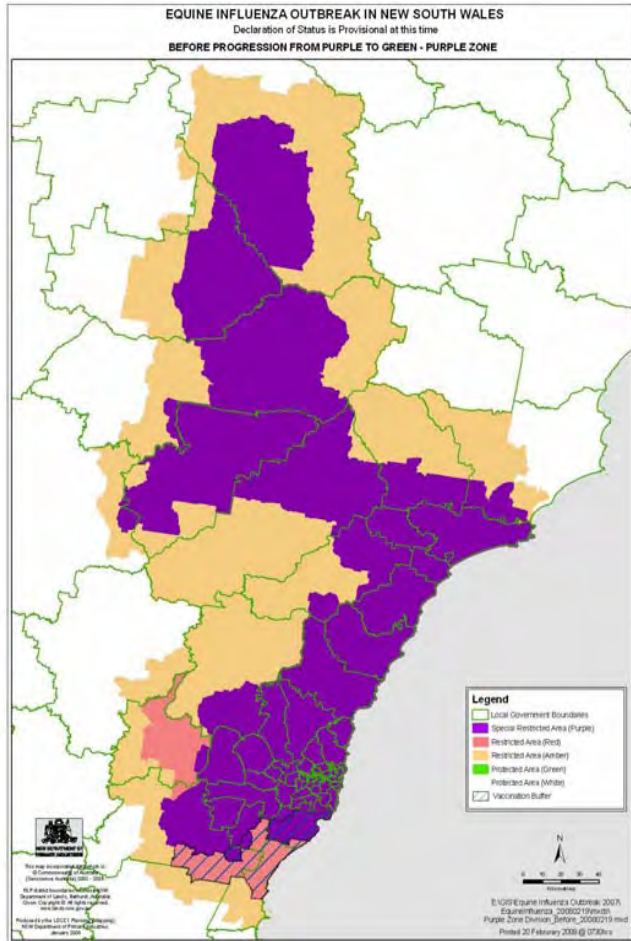
Examples of Other EI Surveillance

Amber Green Random Survey – outside PZ	959 properties (5000+ samples)
Last IPs and DCPs PCR	1052
Horse Clinics PCR Samples	2526
Horse Clinics PCR Properties	865
Studs	223 samples
Amber Green Donut PCR	372 samples 104 props
Event Testing PCR	3015
Movement Test PCR	1613
Vacc Buffer targeted PCR	341
Vaccination Round 2 - PZ PCR	>6000 samples

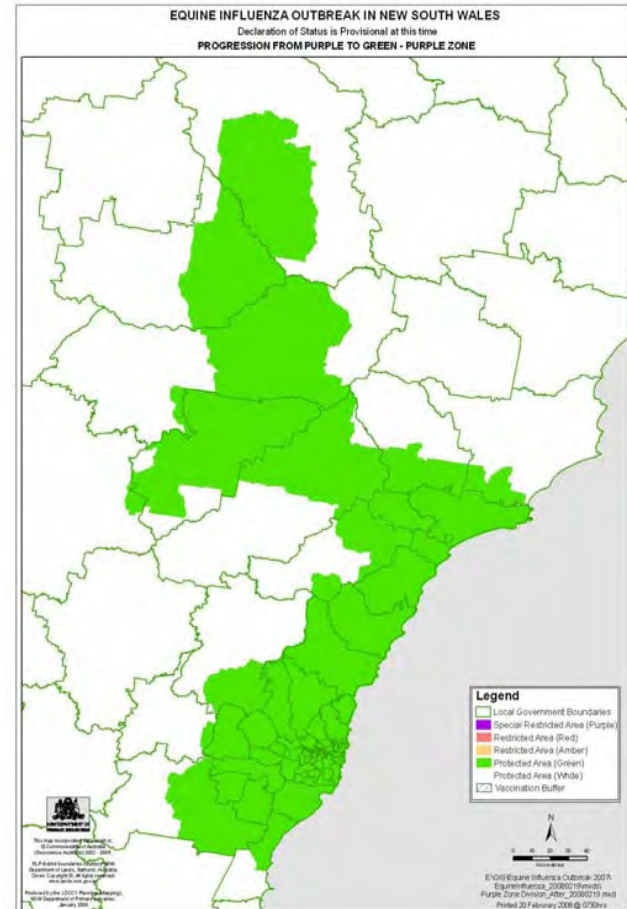


Maps of Final Zone Changes of Purple Zone and Buffers

Before

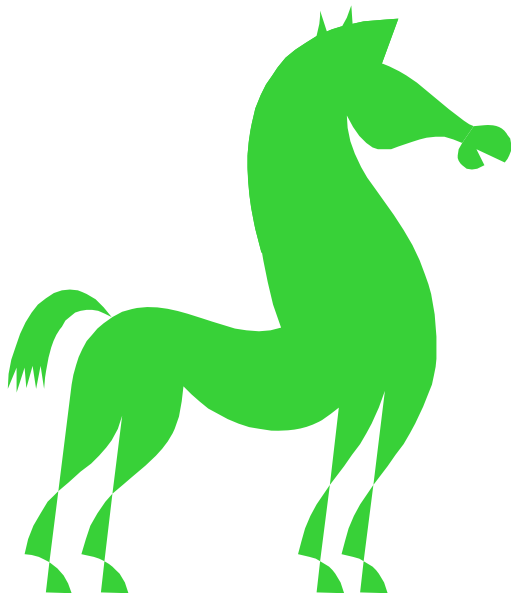


After



THE END

28th February 2008



30th June 2008



Thanks to many people in horse industry, local vets, LDCC and SDCHQ for the information in this presentation