



# Flameproof Rubber Tyred Vehicles Technical Bulletin

Bulletin Number: TB0915

Date: 17/12/2009

Subject: Failure of Hydraulic Hose

## ***Purpose***

To inform the industry of a failure of a pressurised hydraulic hose fitted to Sandvik LS190 loaders.

## ***Applicable to***

All Sandvik Pressure Compensated LS190 (former name ED10, 220) Loaders

## ***Description***

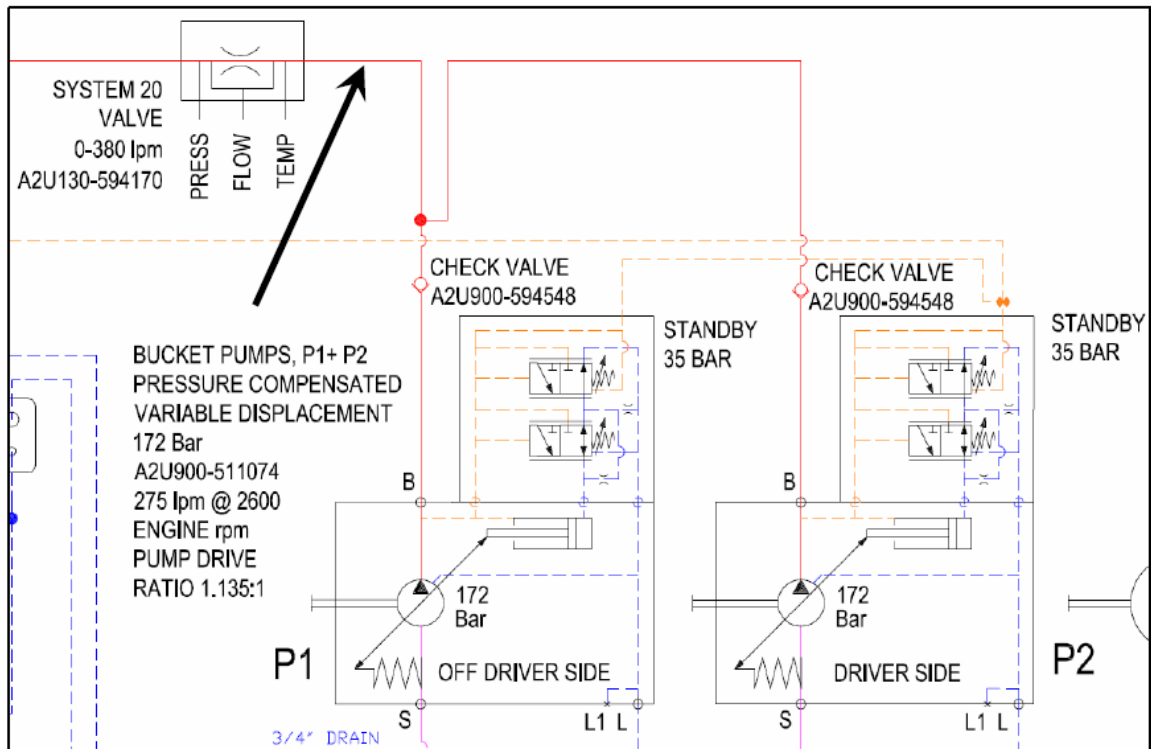
Sandvik have been advised of a failure of a hydraulic hose from the bucket pump to the System 20 valve on a LS190 loader. Hose bend radius and excessive pressure may have contributed to the failure.

The hose is in an area not accessible during vehicle operation and is depressurised during maintenance activities.



**Figure 1** – Failed hose showing failure adjacent to ferrule

# Flameproof Rubber Tyred Vehicles Technical Bulletin



**Figure 2** – Extract of hydraulic schematic showing failed hose.

## Recommendations

Continue to visually examine for leaks as per the 10hr (daily) service schedule.

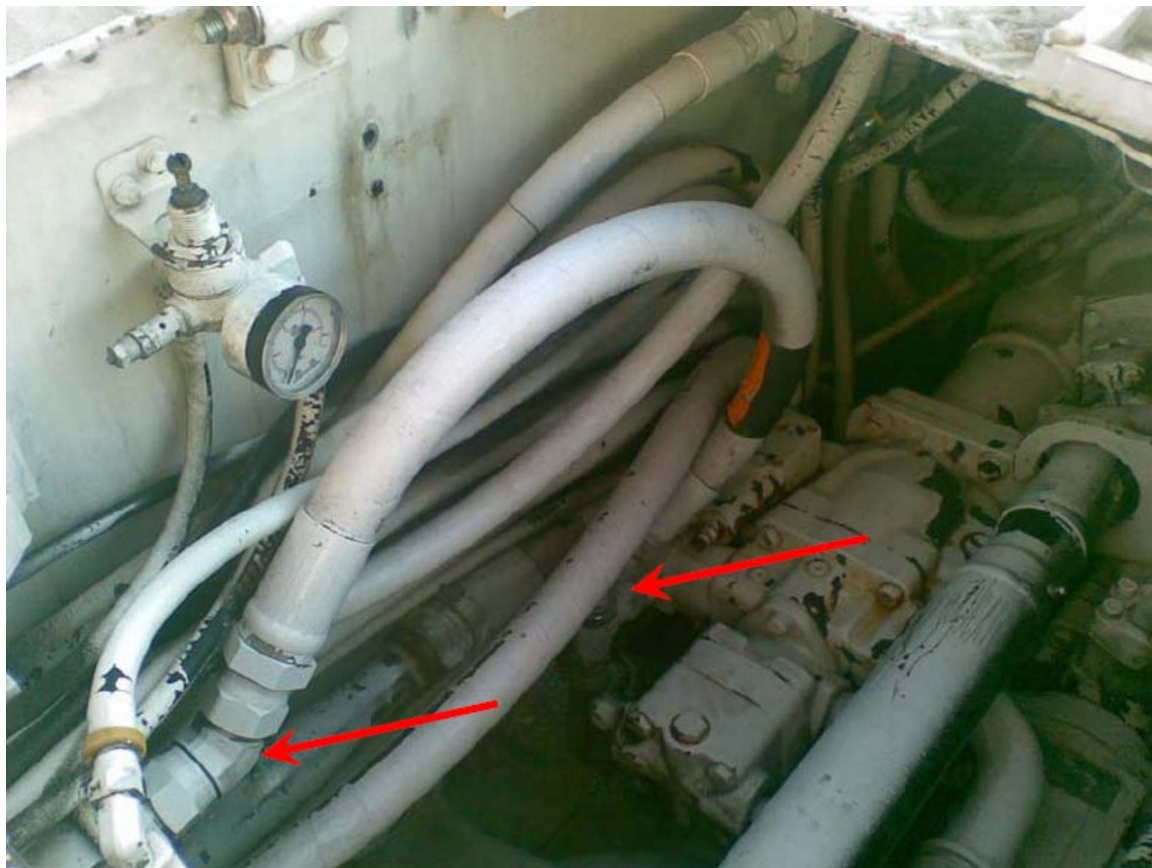
At the next 50hr (weekly) service setup the machine for service and check the following:

1. Hose bend radii should be greater than 305mm for the Duffield D8200 type hose and 150mm for the Parker 721 type hose.
2. Check for hose degradation, particularly adjacent the ferrules. Some hose installations will require the mine sleeve to be pulled back to inspect the hose ends and material type.
3. Hose marking should identify the hose as either Duffield D8200 type hose or Parker 721 type hose.
4. Bucket system pressure (should be 172 bar). Refer to the adjustment procedure provided in TB0918.

Where the hose material type is incorrect or the bend radius is incorrect or the bend radius is too tight, replace the hose installation at the earliest opportunity with Sandvik kit BD00008713 which incorporates a new hose assembly, and two 45 degree fittings. The minimum bend radius for the new hose is 150mm. Note that the individual parts are shown on parts page BD00008799; the kit (part number BD00008713) contains the hose assembly and two fittings.

Hoses showing signs of degradation should be replaced immediately with Sandvik kit BD00008713 and the degraded hoses returned to Sandvik for inspection.

# Flameproof Rubber Tyred Vehicles Technical Bulletin



**Figure 3** – Recommended hose installation with two 45 degree adaptors (marked with red arrows).

### **Contact**

Contact your Sandvik representative for further information or any questions you may have.

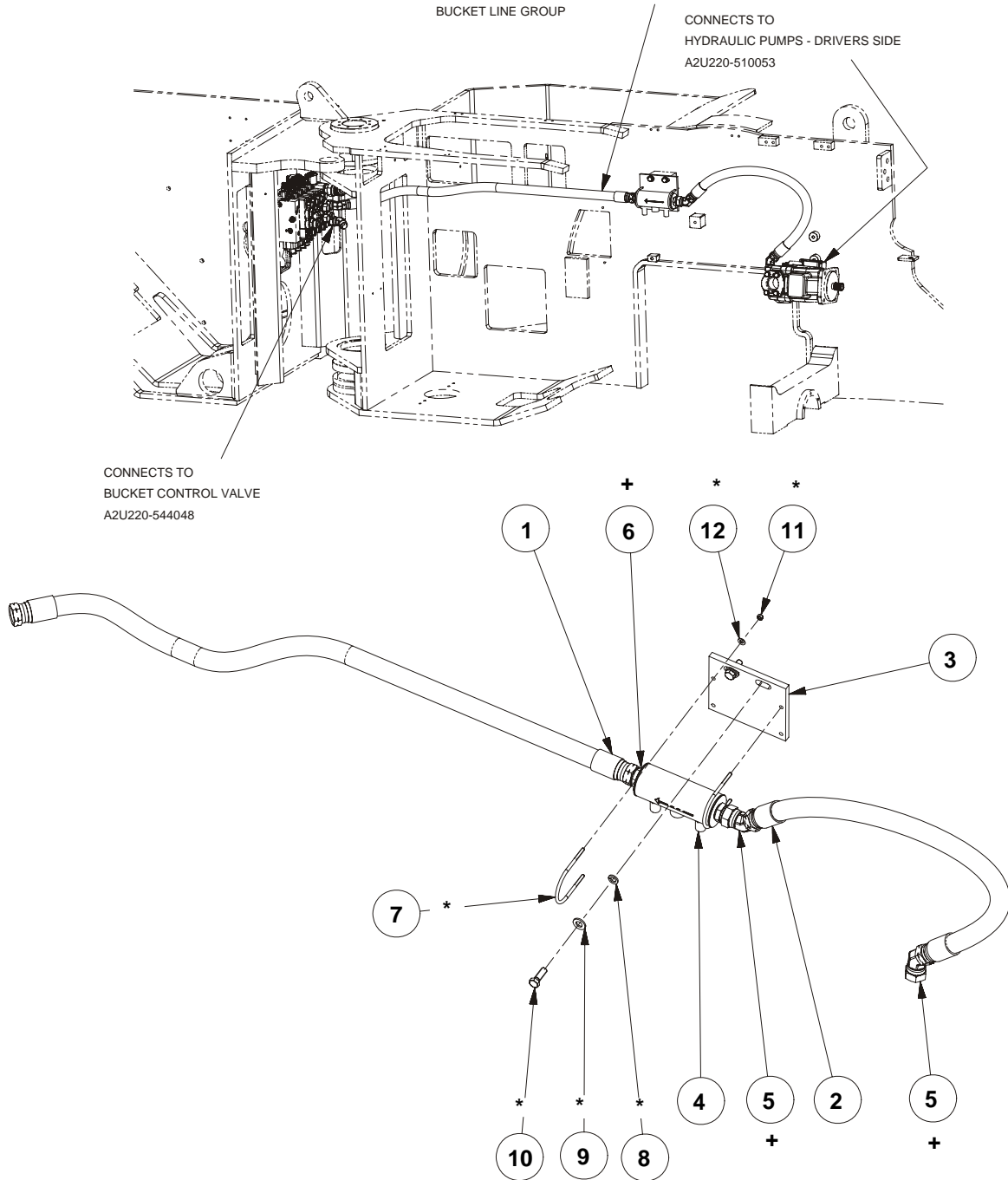
### **Attachments**

- LS190 Parts Page BD00008799

**BD00008799**  
**REV. 0**

**LINES GROUP, SYSTEM 20 LS190**

**05-35**



**\*\* SERVICEABLE PARTS OF THIS ASSEMBLY ARE SHOWN SEPARATELY UNDER THE ASSEMBLY NUMBER  
PLEASE QUOTE MACHINE SERIAL NUMBER WHEN ORDERING PARTS**



BD00008799

LINES GROUP, SYSTEM 20 LS190

05-35

REV. 0

ITEM	PART NO	PAGE	QTY	DESCRIPTION
1	BD00008812		1	HOSE KIT, D2900-16-145-21
2	BD00008811		1	HOSE KIT-D2900-16-83-21
3	A2U220-591662		1	MOUNTING BRACKET
4	A2U130-594170		1	VALVE-380L
5	D51-2121		2	Adaptor Union 45, 1.5/16" JIC x 1.5/16" JIC M/F
6	D15-1621		2	Nipple, 1" NPT x 1.5/16" JIC
7	BD00008762		2	U BOLT - 6 DIA
8	450081124		2	Washer, Spring, 12 mm
9	450061619		2	Washer, Flat, 12 mm
10	445502845		2	Bolt Hex Head, M12 x 35mm Long
11	455669026		4	Hex Nyloc Nut, M6 X 1
12	450062504		4	Washer, Flat, 6 mm
+	BD00008854		1	Fitting Kit
*	BD00008855		1	Fastener Kit

\*\* SERVICEABLE PARTS OF THIS ASSEMBLY ARE SHOWN SEPARATELY UNDER THE ASSEMBLY NUMBER

GIVE MACHINE SERIAL NUMBER WHEN ORDERING PARTS