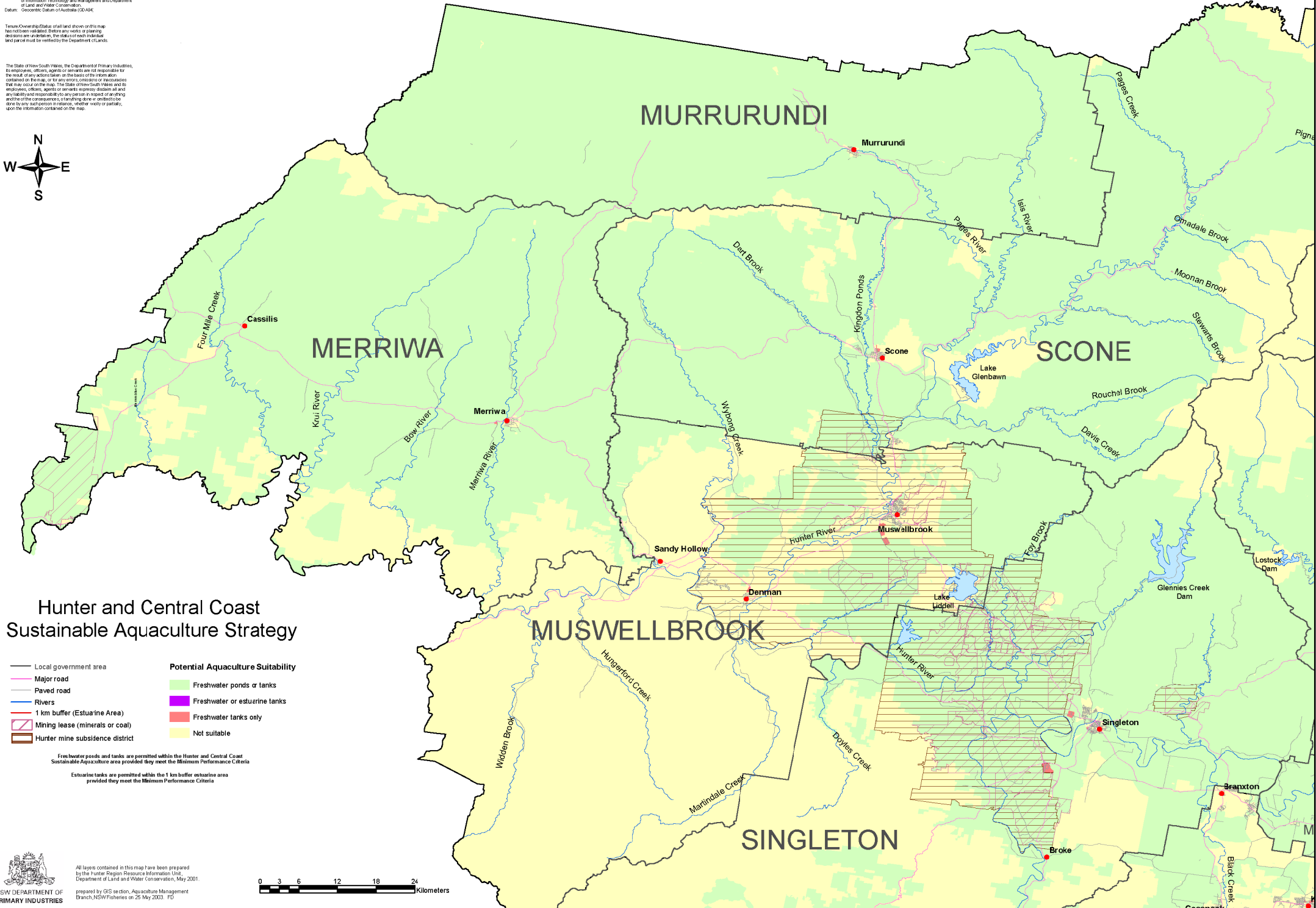


Source: data has been provided in 1999 and 2000 courtesy of Local Government Councils, Department of Mineral Resources, Mine Subsidence Board, Department of Urban Affairs and Planning, State Parks and Wildlife Service, Department of Information Technology and Management and Department of Land and Water Conservation.  
 Datum: Geocentric Datum of Australia (GDA98)

Tenure Ownership/Status of all land shown on this map has not been validated. Before any works or planning decisions are undertaken, the status of each individual land parcel must be verified by the Department of Lands.

The State of New South Wales, the Department of Primary Industries, its employees, officers, agents or servants are not responsible for the result of any actions taken on the basis of the information contained on this map, or for any errors, omissions or inaccuracies that may occur on the map. The State of New South Wales and its employees, officers, agents or servants expressly disclaim all and any liability and responsibility to any person in respect of anything and of the consequences of anything done or omitted to be done by any such person in reliance, whether wholly or partially, upon the information contained on this map.



# Hunter and Central Coast Sustainable Aquaculture Strategy

- |                                   |  |
|-----------------------------------|--|
| — Local government area           | <b>Potential Aquaculture Suitability</b> |
| — Major road                      | Green Freshwater ponds or tanks          |
| — Paved road                      | Purple Freshwater or estuarine tanks     |
| — Rivers                          | Red Freshwater tanks only                |
| — 1 km buffer (Estuarine Area)    | Yellow Not suitable                      |
| — Mining lease (minerals or coal) |  |
| — Hunter mine subsidence district |  |

Freshwater ponds and tanks are permitted within the Hunter and Central Coast Sustainable Aquaculture area provided they meet the Minimum Performance Criteria

Estuarine tanks are permitted within the 1 km buffer estuarine area provided they meet the Minimum Performance Criteria



All layers contained in this map have been prepared by the Hunter Region Resource Information Unit, Department of Land and Water Conservation, May 2001.

prepared by GIS section, Aquaculture Management Branch, NSW Fisheries on 25 May 2003. FD

