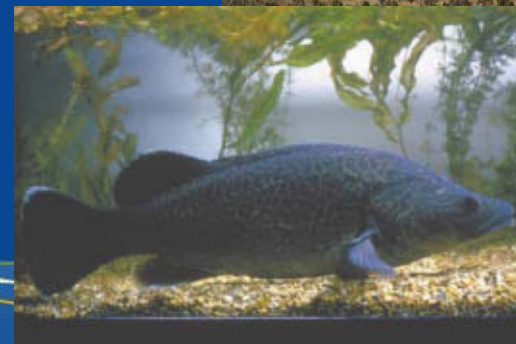
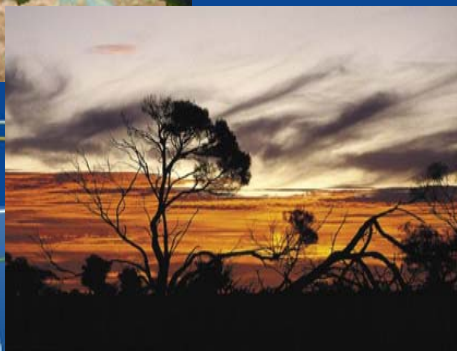
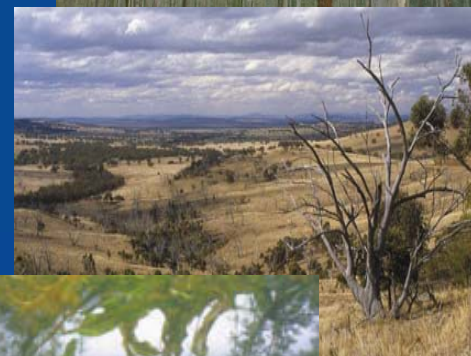
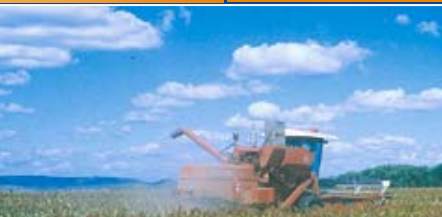


Climatology in Agriculture - DPI *Climate Risk Management* Project

Gary Allan -
Project Leader, DPI Orange

Climate Change and Agriculture - Impacts and Adaptation in the Lower Murray-Darling Catchment



NSW Greenhouse Plan



NSW Greenhouse Plan

www.greenhouseinfo.nsw.gov.au

- Released 29 November 2005
- *"A strategic response to combating climate change in NSW"*
- 3 sections:
 1. Awareness raising
 2. Adaptation to climate change impacts
 3. Reducing greenhouse gas emissions

2. Adapting to Climate Change

“Adaptation to the impacts of further inevitable climate change will be necessary”.....

even if Australia (or the world) reduces its greenhouse gas emissions in the near future
(the legacy of history)

“The increases in temperature...are built into the system, and will be with us (at least) for our lifetimes” *Malcolm Turnbull, Lateline 29 March '07*

2.4 Climatology in Agriculture (DPI *Climate Risk Management* project)

The objective of this project is to:

“Strengthen the climatology in agriculture program and develop tools and guidelines for use by farmers and Catchment Management Authorities (CMAs)”

What's this project about?

- 3 year project, covers whole of NSW
- Partnerships and collaboration are critical
- CMAs, producers and industry groups are the key partners
- Contributing to the development of adaptive capacity (at a regional scale) is fundamental
- Improved understanding of climate change impacts on key industries will enhance our current knowledge, and inform adaptation responses

Why have regional forums?

- To raise awareness of, and focus attention on the impacts of climate change on agriculture
- To identify the issues in a regional context to inform the development of adaptation strategies
- To engage with regional producers and industries
- To initiate ongoing processes for the development of adaptation strategies at the regional/local scale
- To integrate impacts on agriculture within the broader issues facing regional communities as a result of climate change

"Climate Change Risk and Vulnerability" -

"Promoting an efficient adaptation response in Australia" - Allen Consulting Group (2005)

Exposure + Sensitivity



Potential Impact + Adaptive Capacity



Vulnerability

- Murray-Darling Basin one of the 3 regions most vulnerable to climate change (major region for NSW agriculture)
- Found those agri-business units most at risk are:
 - those already stressed (economically/biophysically)
 - those at the edge of their climate tolerance
 - those involving large, long-lived investments

Thank you for your interest in
attending...enjoy the forum!



