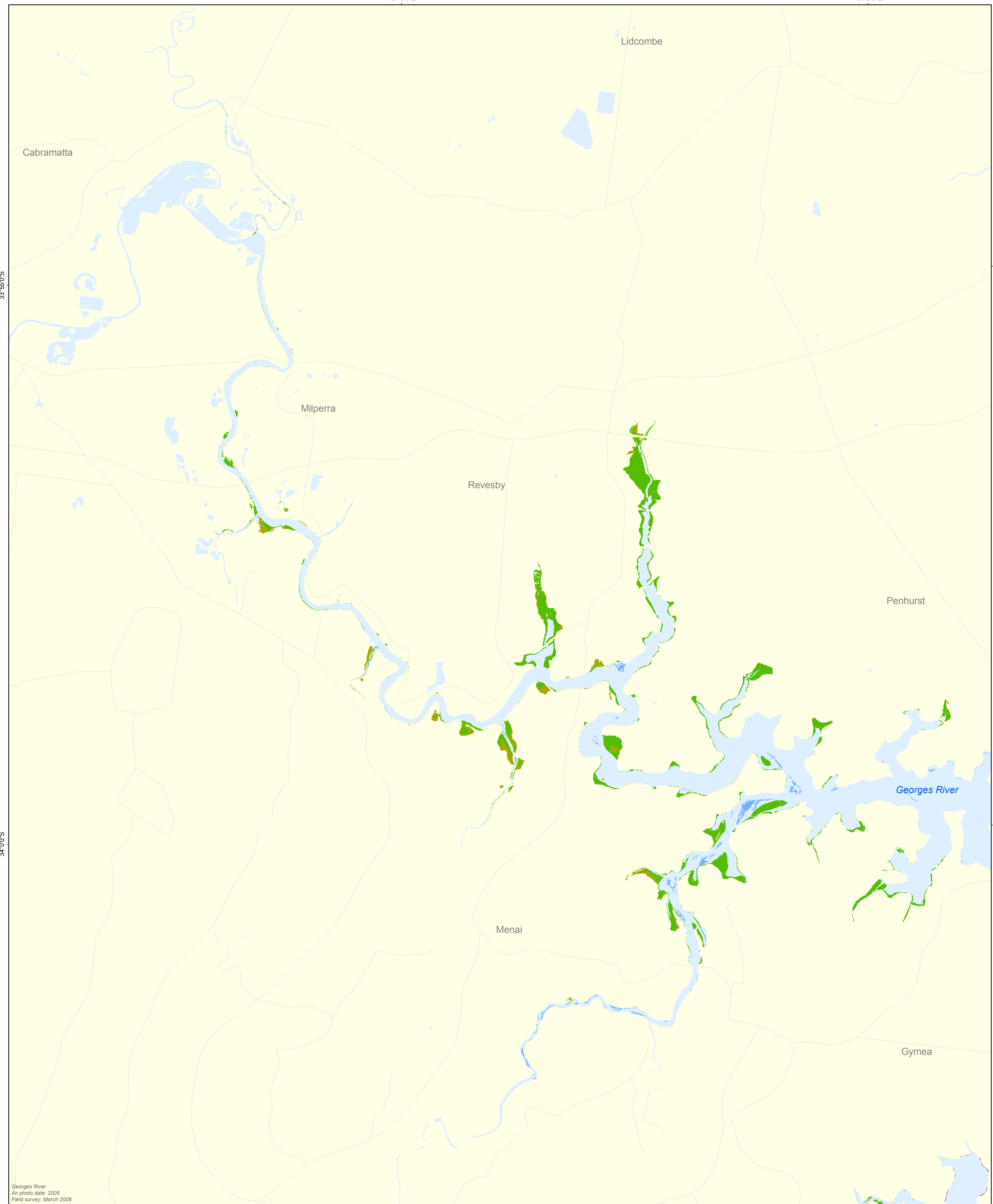


Georges River

151°0'0"E

151°5'0"E



33°55'0"S

33°55'0"S

34°0'0"S

34°0'0"S

151°0'0"E

151°5'0"E

Georges River
Air photo date: 2005
Field survey: March 2008

Legend			
Posidonia	Posidonia/Halophila/Ruppia	Zostera/Halophila/Ruppia	Ruppia
Posidonia/Zostera	Posidonia/Ruppia	Zostera/Ruppia	Saltmarsh
Posidonia/Halophila	Zostera	Halophila	Mangrove/Saltmarsh
Posidonia/Zostera/Halophila	Zostera/Halophila	Halophila/Ruppia	Mangrove

Not all habitats may be present in this map.

