

# AQUACULTURE PRODUCTION

## Report 2006-07



Title: Aquaculture production report 2006–2007

Author: Sheree Wiseman, Aquaculture Unit, Port Stephens Fisheries Centre

© State of New South Wales through NSW Department of Primary Industries 2008. You may copy, distribute, display, download and otherwise freely deal with this publication for any purpose, provided that you attribute the department as the owner. However, you must obtain permission if you wish to:

- charge others for access to the publication (other than at cost);
- include the publication in advertising or a product for sale;
- modify the publication; or
- re-publish the publication on a website.

You may freely link to the publication on the NSW Department of Primary Industries website.

For updates to this publication, check <http://www.dpi.nsw.gov.au/>

Published by NSW Department of Primary Industries

ISSN 1444-840

Acknowledgements

Project Manager: Sheree Wiseman, Aquaculture Unit, Port Stephens Fisheries Centre

Data: Jan Powell, Janine Sakker, Liz Alldritt, Carly Goddard, Raelene Atkinson

Tables & Graphs: Sheree Wiseman, Jenny Batterham, Liz Alldritt, Janine Sakker

Disclaimer

Information presented in this publication is presented as a general representation of aquaculture production in NSW for the reporting period 1 July 2006 to 30 June 2007. All care has been taken to ensure the information is correct at the time of publication. NSW Department of Primary Industries does not guarantee the accuracy of the information provided by the permit holders.

This information should not be used in the development of business plans, investment proposals or other applications unless professional advice is sought.

File reference: INT06/34568

## Minister's message

It is my great pleasure to present the NSW Government's Aquaculture Production report for the 2006-2007 financial year.

The NSW aquaculture sector is recognised as a major contributor to seafood production in NSW. The industry provides employment and contributes significantly to local and regional communities by providing ecological sustainable development through partnership with the aquaculture industry, community and stakeholders.

NSW total Aquaculture production increased in value to \$49.3 million in 2006-2007. The value of the Sydney rock oyster industry rose by 6.1 percent to \$34.6 million. The Hawkesbury River has shown a significant increase in production compared to last year which reflects the tremendous effort farmers have put in to re-establish viability in the marketplace following the impacts of QX oyster disease.

Oyster spat increased in value to \$2.1 million with significant volumes of Pacific and Angasi (flat) oysters also being produced in the 2006-2007 financial year.

Despite the ongoing impacts of drought, the land based fish farming remains comparable to last financial year. There was a positive increase in the production of Murray cod, Barramundi and Rainbow trout with hatchery increasing in value to \$1.5 million.

Prawn farmers continue to feel the pressure to remain competitive in a market of cheaper imported prawns. There was a significant decrease in production levels and farm gate price resulting in a 7 percent decrease in value to \$2.5 million.

I would like to thank all aquaculture farm operators who contributed to this report, as their on-going cooperation is invaluable. I look forward to watching the continued growth of the NSW aquaculture industry.



A handwritten signature in black ink, appearing to read "Ian Macdonald". The signature is written in a cursive, flowing style.

Ian Macdonald, MLC  
NSW Minister for Primary Industries

## Contents

|   |           |
|---|-----------|
| <b>Land Based Production</b>  | <b>1</b>  |
| Table 1: Snapshot of Aquaculture Production for 2006/2007   | 1         |
| Table 2: Fish, Crustacean and Mollusc Production 2006/2007  | 2         |
| Table 3: Commercial Hatchery Production 2006/2007   | 3         |
| Figure A: Comparative Graph of Non-Oyster Aquaculture Production                                  | 4         |
| <b>Oyster Production</b>  | <b>5</b>  |
| Table 4: Sydney Rock Oyster Production – 2003/2004, 2004/2005, 2005/2006 and 2006/2007 by Estuary | 5         |
| Table 5: Sydney Rock Oyster Sales by Estuary and Production method                                | 6         |
| Table 6: Sydney Rock Oyster Sales by Market   | 9         |
| Table 7: Sydney Rock Oyster Sales by Production Method  | 9         |
| Table 8: Sydney Rock Oyster Sales by Permit Holders   | 10        |
| Figure B: Percentage of Oyster Permit Holders by Production Range                                 | 11        |
| Table 9: Sydney Rock Oyster Sales by Estuary  | 12        |
| Figure C: Comparative Graphs: Sydney Rock Oyster (SRO) Production                                 | 13        |
| Table 10: Pacific Oyster Sales from Port Stephens   | 14        |
| Table 11: Pacific Oyster Sales by Production Method   | 14        |
| Table 12: Pacific Oyster Sales by Market  | 14        |
| Figure D: Comparative Graphs – Pacific Oyster Production  | 15        |
| Table 13 Spat Production Value by Cultivation Method  | 16        |
| Table 14 Spat Sales by Estuary  | 16        |
| <b>Appendix 1. Oyster Price and Weight Conversions</b>  | <b>17</b> |
| Sydney Rock Oysters   | 17        |
| Pacific Oysters   | 17        |
| Weight Conversions  | 17        |

**Table 1: Snapshot of Aquaculture Production for 2006/2007**

| Grouping                 | Common Name             | Scientific Name  | No. Farms with Permits for this Species | No. Farms Producing this Species | Commercial Production Area (ha) | Production (kg) | Average Price per kg (\$) | Total Value (\$)    |                    |
|--------------------------|-------------------------|--|---|----------------------------------|---------------------------------|-----------------|---------------------------|---------------------|--------------------|
| <b>Crustaceans</b>       | black tiger prawn       | <i>Penaeus monodon</i>                                     | 12                                      | N/a                              | 90.2                            | 198,671         | 12.98                     | \$2,579,620         |                    |
|                          | yabby                   | <i>Cherax destructor</i>                                   | 115                                     | 20                               | **353.72                        | 6,758           | 19.70                     | \$133,172           |                    |
|                          | yabby (bait)            | <i>Cherax destructor</i>                                   |   |                                  |                                 |                 |                           | \$123,693           |                    |
| <b>Freshwater fish</b>   | barramundi              | <i>Lates calcarifer</i>                                    | 9                                       | N/a                              | 0.5                             | 113,679         | 10.62                     | \$1,207,486         |                    |
|                          | brown trout             | <i>Salmo trutta</i>  | 13                                      | N/a                              | 0.1                             | 42              | 16.97                     | \$713               |                    |
|                          | eel-long finned         | <i>Anguilla reinhardtii</i>                                | 23                                      | N/a                              | 4.27                            | 5,182           | 10.52                     | \$54,528            |                    |
|                          | golden perch            | <i>Macquaria ambigua</i>                                   | 103                                     | N/a                              | 0.3                             | 750             | 20.00                     | \$15,000            |                    |
|                          | Murray cod              | <i>Maccullochella peelii</i>                               | 64                                      | 7                                | 1.46                            | 16,082          | 20.59                     | \$331,170           |                    |
|                          | rainbow trout           | <i>Oncorhynchus mykiss</i>                                 | 28                                      | 7                                | 9.44                            | 217,082         | 7.68                      | \$1,667,731         |                    |
|                          | silver perch            | <i>Bidyanus bidyanus</i>                                   | 116                                     | 35                               | 53.63                           | 232,062         | 10.31                     | \$2,393,079         |                    |
|                          | <b>Marine fish</b>      | mulloway   | <i>Argyrosomus japonicus</i>            | 21                               | N/a                             | 4.9             | 9,694                     | 9.59                | \$92,943           |
|                          | <b>Sub total</b>        |  |   |                                  |                                 |                 |                           |                     | <b>\$8,599,135</b> |
| <b>Hatchery</b>          | Hatchery (species)      | (see hatchery production table)                            |   |                                  |                                 |                 |                           | \$1,538,390         |                    |
| <b>Mollusc - oysters</b> | Sydney rock oyster      | <i>Saccostrea glomerata</i> (see oyster production tables) |   |                                  |                                 |                 |                           | \$34,592,579        |                    |
|                          | Pacific oyster          | <i>Crassostrea gigas</i> (see oyster production tables)    |   |                                  |                                 |                 |                           | \$1,004,762         |                    |
|                          | Triploid Pacific oyster | <i>Crassostrea gigas</i>                                   |   |                                  |                                 |                 |                           | \$571,644           |                    |
|                          | flat oysters            | <i>Ostrea angasi</i>                                       |   |                                  |                                 |                 |                           | \$277,238           |                    |
|                          | oyster spat             | (see oyster production tables)                             |   |                                  |                                 |                 |                           | \$2,166,010         |                    |
| <b>*Other</b>            |                         |  |   |                                  |                                 |                 |                           | \$552,228           |                    |
| <b>Total \$ Value</b>    |                         |  |   |                                  |                                 |                 |                           | <b>\$49,301,986</b> |                    |

N/a = not available due to confidentiality e.g. fewer than five permits.

\*Other = Due to confidentiality these figures are included under this category. Species include, blue mussel *Mytilus galloprovincialis*, pearl oyster *Pinctada imbricata*, sleepy cod *Oxyeleotris lineolatus* and tube worm *Diopatra dentata*.

\*\*Includes Commercial Production Area Class E (multi site) aquaculture permits.

Note that the "Average Price per kg (\$)" has been rounded to nearest cent.

**Table 2: Fish, Crustacean and Mollusc Production 2006/2007**

| Grouping               | Common Name        | Scientific Name              | No. Farms with Permits for this Species | No. Farms Producing this Species | Commercial Production Area (ha) | Production (kg) | Average Price per kg (\$) | Total Value (\$)   |
|------------------------|--------------------|------------------------------|---|----------------------------------|---------------------------------|-----------------|---------------------------|--------------------|
| <b>Crustaceans</b>     | black tiger prawn  | <i>Penaeus monodon</i>       | 12                                      | N/a                              | 90.2                            | 198,671         | 12.98                     | \$2,579,620        |
|                        | yabby              | <i>Cherax destructor</i>     | 115                                     | 20                               | **353.72                        | 6,758           | 19.70                     | \$133,172          |
|                        | yabby (bait)       | <i>Cherax destructor</i>     |   |                                  |                                 |                 |                           | \$123,693          |
| <b>Freshwater fish</b> | barramundi         | <i>Lates calcarifer</i>      | 9                                       | N/a                              | 0.5                             | 113,679         | 10.62                     | \$1,207,486        |
|                        | brown trout        | <i>Salmo trutta</i>          | 13                                      | N/a                              | 0.1                             | 42              | 16.97                     | \$713              |
|                        | eel-long finned    | <i>Anguilla reinhardtii</i>  | 23                                      | N/a                              | 4.27                            | 5,182           | 10.52                     | \$54,528           |
|                        | golden perch       | <i>Macquaria ambigua</i>     | 103                                     | N/a                              | 0.3                             | 750             | 20.00                     | \$15,000           |
|                        | Murray cod         | <i>Maccullochella peelii</i> | 64                                      | 7                                | 1.46                            | 16,082          | 20.59                     | \$331,170          |
|                        | rainbow trout      | <i>Oncorhynchus mykiss</i>   | 28                                      | 7                                | 9.44                            | 217,082         | 7.68                      | \$1,667,731        |
|                        | silver perch       | <i>Bidyanus bidyanus</i>     | 116                                     | 35                               | 53.63                           | 232,062         | 10.31                     | \$2,393,079        |
|                        | <b>Marine fish</b> | mulloway                     | <i>Argyrosomus japonicus</i>            | 21                               | N/a                             | 4.9             | 9,694                     | 9.59               |
| <b>*Other</b>          |                    |                              |   |                                  |                                 |                 |                           | \$551,228          |
| <b>Total \$ Value</b>  |                    |                              |   |                                  |                                 |                 |                           | <b>\$9,150,363</b> |

N/a = not available due to confidentiality e.g. fewer than five permits

\*Other = Due to confidentiality these figures are included under this category. Species include, blue mussel *Mytilus galloprovincialis*, tube worm *Diopatra dentata*, sleepy cod *Oxyeleotris lineolatus*.

\*\*Includes Commercial Production Area Class E (multi site) aquaculture permits.

Note that the "Average Price per kg (\$)" has been rounded to the nearest cent.

**Table 3: Commercial Hatchery Production 2006/2007**

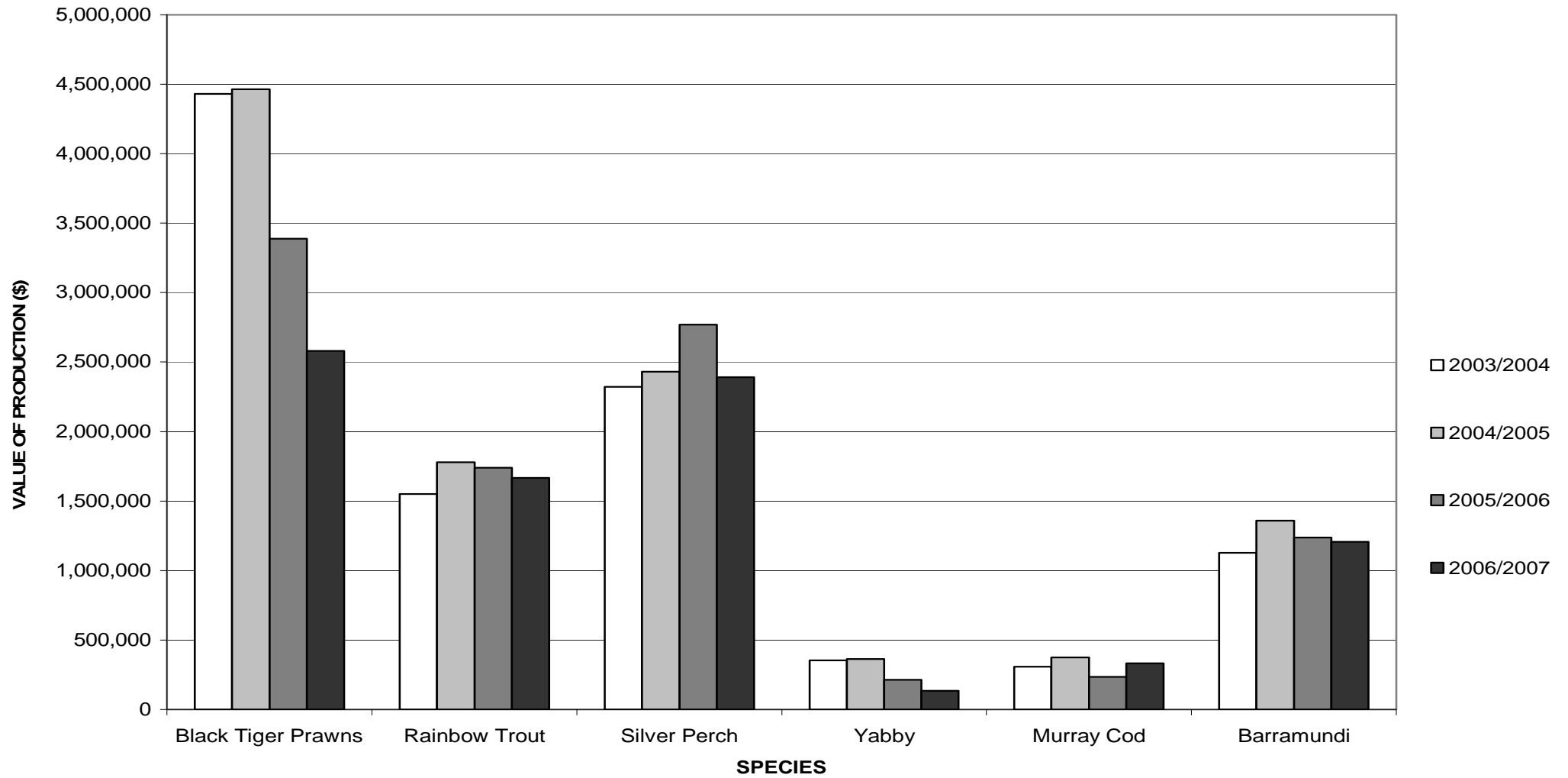
| Grouping               | Common Name        | Scientific Name                | Number of Permits | Hatcheries Producing | Product Description               | Quantity  | Average Price per Unit (\$) | Total Value (\$)   |
|------------------------|--------------------|--------------------------------|-------------------|----------------------|-----------------------------------|-----------|-----------------------------|--------------------|
| <b>Crustaceans</b>     | black tiger prawn  | <i>Penaeus monodon</i>         | 7                 | N/a                  | Prawn post-larvae (per 1,000)     | 1,600     | 0.01                        | \$24,000           |
| <b>Freshwater fish</b> | aquarium species   | <b>Various species</b>         | 5                 | N/a                  | Fish fingerlings (per individual) | 180,713   | 0.99                        | \$179,418          |
|                        | Australian bass    | <i>Macquaria novemaculeata</i> | 15                | N/a                  | Fish fingerlings (per individual) | 282,289   | 0.48                        | \$135,287          |
|                        | eel tailed catfish | <i>Tandanus tandanus</i>       | 22                | N/a                  | Fish fingerlings (per individual) | 12,405    | 1.32                        | \$16,422           |
|                        | golden perch       | <i>Macquaria ambigua</i>       | 38                | 7                    | Fish fingerlings (per individual) | 1,358,148 | 0.24                        | \$320,636          |
|                        | goldfish           | <i>Carassius auratus</i>       | 9                 | N/a                  | Fish fingerlings (per individual) | 80,980    | 0.54                        | \$44,052           |
|                        | koi carp           | <i>Cyprinus carpio</i>         | 8                 | 6                    | Fish fingerlings (per individual) | 274,650   | 0.56                        | \$154,315          |
|                        | Murray cod         | <i>Maccullochella peelii</i>   | 20                | 5                    | Fish fingerlings (per individual) | 781,434   | 0.55                        | \$437,000          |
|                        |                    |                                |                   |                      | Fish fry                          | 280,000   | 0.16                        | \$46,000           |
|                        | rainbow trout      | <i>Oncorhynchus mykiss</i>     | 12                | N/a                  | Fish fingerlings (per individual) | 54,411    | 0.70                        | \$38,204           |
|                        | silver perch       | <i>Bidyanus bidyanus</i>       | 41                | 12                   | Fish fingerlings (per individual) | 513,349   | 0.27                        | \$137,616          |
| <b>*Other</b>          |                    |                                |                   |                      |                                   |           |                             | \$5,440            |
| <b>Total Value</b>     |                    |                                |                   |                      |                                   |           |                             | <b>\$1,538,390</b> |

N/a = not available due to confidentiality e.g. fewer than five permits

\*Other = Due to confidentiality these figures are included under this category. Species include silver bream *Acanthopagrus australis* & sand whiting *Sillago ciliata*.

Note that the "Average Price per Unit (\$)" has been rounded to the nearest cent.

**Figure A: Comparative Graph of Non-Oyster Aquaculture Production**



**Table 4: Sydney Rock Oyster Production – 2003/2004, 2004/2005, 2005/2006 and 2006/2007 by Estuary**

| Estuary          | Plate Grade Dozens |                  |                  |                  | Bistro Grade Dozens |                  |                  |                  | Bottle Grade Dozens |                  |                  |                  | Total Dozens     |                  |                  |                  |
|------------------|--------------------|------------------|------------------|------------------|---------------------|------------------|------------------|------------------|---------------------|------------------|------------------|------------------|------------------|------------------|------------------|------------------|
|                  | 03/04              | 04/05            | 05/06            | 06/07            | 03/04               | 04/05            | 05/06            | 06/07            | 03/04               | 04/05            | 05/06            | 06/07            | 03/04            | 04/05            | 05/06            | 06/07            |
| Nambucca River   | 37,042             | 21,997           | 44,582           | 30,823           | 41,781              | 23,030           | 44,075           | 59,362           | 12,908              | 19,630           | 19,235           | 17,161           | 91,731           | 64,657           | 107,892          | 107,346          |
| Macleay River    | 24,028             | 20,392           | 39,342           | 5,271            | 47,396              | 35,502           | 58,614           | 10,940           | 82,741              | 75,104           | 78,467           | 28,116           | 154,165          | 130,998          | 176,423          | 44,327           |
| Hastings River   | 46,990             | 50,570           | 65,248           | 66,552           | 96,875              | 116,535          | 97,224           | 95,509           | 219,407             | 133,150          | 135,296          | 148,339          | 363,272          | 300,255          | 297,768          | 310,400          |
| Camden Haven     | 72,352             | 75,400           | 110,511          | 88,608           | 38,629              | 60,462           | 71,667           | 77,415           | 85,246              | 129,285          | 129,995          | 145,530          | 196,227          | 265,147          | 312,173          | 311,553          |
| Manning River    | 80,535             | 77,957           | 80,873           | 80,971           | 53,129              | 62,324           | 79,605           | 52,557           | 72,683              | 107,670          | 172,607          | 130,409          | 206,347          | 247,951          | 333,085          | 263,937          |
| Wallis Lake      | 555,432            | 490,654          | 403,249          | 455,384          | 591,663             | 633,423          | 583,373          | 726,249          | 1,286,303           | 1,098,017        | 1,026,736        | 1,138,780        | 2,433,398        | 2,222,094        | 2,013,358        | 2,320,413        |
| Port Stephens    | 271,171            | 249,250          | 248,028          | 292,611          | 273,721             | 206,823          | 196,873          | 200,773          | 248,988             | 233,018          | 271,708          | 189,167          | 793,880          | 689,091          | 716,609          | 682,551          |
| Brisbane Water   | 146,500            | 146,435          | 108,261          | 43,000           | 112,404             | 126,799          | 122,770          | 61,377           | 356,497             | 246,526          | 260,593          | 167,998          | 615,401          | 519,760          | 491,624          | 272,375          |
| Hawkesbury River | 151,820            | 71,462           | 300              | 2,000            | 250,987             | 119,220          | 440              | 3,400            | 443,454             | 265,348          | 4,710            | 5,100            | 846,261          | 456,030          | 5,450            | 10,500           |
| Shoalhaven River | 18,343             | 24,098           | 12,224           | 18,814           | 9,240               | 13,054           | 13,717           | 14,320           | 58,336              | 3,633            | 8,842            | 15,541           | 85,919           | 40,785           | 34,783           | 48,675           |
| Crookhaven River | 26,331             | 27,267           | 34,968           | 36,472           | 28,694              | 36,248           | 40,799           | 34,430           | 48,429              | 58,245           | 54,757           | 51,732           | 103,454          | 121,760          | 130,524          | 122,634          |
| Clyde River      | 181,133            | 196,422          | 203,277          | 152,254          | 286,408             | 393,392          | 270,543          | 210,894          | 455,139             | 488,153          | 426,335          | 407,189          | 922,680          | 1,077,967        | 900,155          | 770,337          |
| Tuross Lake      | 5,093              | 9,074            | 12,688           | 27,250           | 26,644              | 33,940           | 28,780           | 30,090           | 36,750              | 30,645           | 30,400           | 22,875           | 68,487           | 73,659           | 71,868           | 80,215           |
| Wagonga Inlet    | 14,900             | 19,980           | 29,628           | 32,200           | 125,543             | 69,906           | 83,551           | 114,027          | 112,570             | 125,511          | 143,509          | 171,172          | 253,013          | 215,397          | 256,688          | 317,399          |
| Wapengo Lake     | 8,197              | 8,604            | 14,812           | 11,555           | 42,921              | 44,435           | 48,280           | 35,055           | 34,091              | 27,300           | 24,370           | 22,695           | 85,209           | 80,339           | 87,462           | 69,305           |
| Merimbula Lake   | 129,778            | 106,119          | 62,495           | 116,760          | 107,138             | 43,280           | 63,611           | 74,407           | 40,838              | 42,159           | 73,801           | 59,994           | 277,754          | 191,558          | 199,907          | 251,161          |
| Pambula River    | 27,625             | 35,062           | 27,600           | 40,467           | 41,197              | 59,940           | 50,117           | 63,943           | 61,430              | 83,524           | 87,082           | 92,484           | 130,252          | 178,526          | 164,799          | 196,894          |
| Wonboyn River    | 8,738              | 28,001           | 24,356           | 2,6408           | 11,393              | 17,875           | 17,067           | 21,715           | 10,043              | 6,552            | 3,617            | 7,729            | 30,174           | 52,428           | 45,040           | 55,852           |
| **Others         | 129,442            | 95,859           | 78,515           | 98,430           | 136,054             | 81,422           | 44,921           | 117,183          | 77,145              | 80,737           | 37,436           | 72,980           | 342,641          | 258,018          | 160,872          | 288,593          |
| <b>Totals</b>    | <b>1,935,450</b>   | <b>1,754,603</b> | <b>1,630,390</b> | <b>1,625,830</b> | <b>2,321,817</b>    | <b>2,177,610</b> | <b>1,940,741</b> | <b>2,003,646</b> | <b>3,742,998</b>    | <b>3,254,207</b> | <b>2,996,362</b> | <b>2,894,991</b> | <b>8,000,265</b> | <b>7,186,420</b> | <b>6,567,493</b> | <b>6,524,467</b> |

\*\*Others not named for confidentiality include: Tweed River, Richmond River, Clarence River, Wooli Wooli River, Bellinger River, Hunter River, Patonga Creek, Botany Bay, Bermagui River & Nelson Lagoon.



**Table 5: Sydney Rock Oyster Sales by Estuary and Production Method**

| Estuary               | Type of Cultivation  | Plate Grade (Bags) | Plate Grade (Dozens) | Value (\$)       | Bistro Grade (Bags) | Bistro Grade (Dozens) | Value (\$)       | Bottle Grade (Bags) | Bottle Grade (Dozens) | Value (\$)       | Total Bags         | Total Dozens   | Total Value (\$) |
|-----------------------|----------------------|--------------------|----------------------|------------------|---------------------|-----------------------|------------------|---------------------|-----------------------|------------------|--------------------|----------------|------------------|
| <b>Nambucca River</b> | Floating             | 82                 | 8,200                | \$60,598         | 55                  | 6,050                 | \$33,820         | 25                  | 3,250                 | \$12,773         | 162                | 17,500         | \$107,190        |
|                       | Raft/Pontoon         | 226                | 22,623               | \$167,184        | 485                 | 53,312                | \$298,014        | 107                 | 13,911                | \$54,670         | 818                | 89,846         | \$519,868        |
| <b>Estuary Total</b>  |                      | <b>308</b>         | <b>30,823</b>        | <b>\$227,782</b> | <b>540</b>          | <b>59,362</b>         | <b>\$331,834</b> | <b>132</b>          | <b>17,161</b>         | <b>\$67,443</b>  | <b>980</b>         | <b>107,346</b> | <b>\$627,058</b> |
| <b>Macleay River</b>  | Baskets              | 18                 | 1,782                | \$13,169         | 29                  | 3,199                 | \$17,882         | 130                 | 16,865                | \$66,279         | 177                | 21,846         | \$97,331         |
|                       | Floating             | 6                  | 644                  | \$4,759          | 2                   | 249                   | \$1,392          | 3                   | 353                   | \$1,387          | 11                 | 1,246          | \$7,538          |
|                       | Raft/Pontoon         | 21                 | 2,086                | \$15,416         | 47                  | 5,216                 | \$29,157         | 60                  | 7,752                 | \$30,465         | 128                | 15,054         | \$75,038         |
|                       | Tray                 | 8                  | 759                  | \$5,609          | 21                  | 2,276                 | \$12,723         | 24                  | 3,146                 | \$12,364         | 52                 | 6,181          | \$30,696         |
|                       | <b>Estuary Total</b> |                    | <b>53</b>            | <b>5,271</b>     | <b>\$38,953</b>     | <b>99</b>             | <b>10,940</b>    | <b>\$61,155</b>     | <b>216</b>            | <b>28,116</b>    | <b>\$110,496</b>   | <b>368</b>     | <b>44,327</b>    |
| <b>Hastings River</b> | Baskets              | 40                 | 4,029                | \$29,774         | 122                 | 13,410                | \$74,962         | 377                 | 49,070                | \$192,845        | 540                | 66,509         | \$297,581        |
|                       | Long-line            | 30                 | 2,950                | \$21,801         | 37                  | 4,070                 | \$22,751         | 11                  | 1,430                 | \$5,620          | 78                 | 8,450          | \$50,172         |
|                       | Raft/Pontoon         | 94                 | 9,385                | \$69,355         | 117                 | 12,876                | \$71,977         | 254                 | 32,994                | \$129,666        | 465                | 55,255         | \$270,998        |
|                       | Tray                 | 502                | 50,188               | \$370,889        | 592                 | 65,153                | \$364,205        | 499                 | 64,845                | \$254,841        | 1,593              | 180,186        | \$989,935        |
|                       | <b>Estuary Total</b> |                    | <b>666</b>           | <b>66,552</b>    | <b>\$491,819</b>    | <b>868</b>            | <b>95,509</b>    | <b>\$533,895</b>    | <b>1,141</b>          | <b>148,339</b>   | <b>\$582,972</b>   | <b>2,675</b>   | <b>310,400</b>   |
| <b>Camden Haven</b>   | Floating             |                    |                      |                  | 10                  | 1,100                 | \$6,149          | 277                 | 36,000                | \$141,480        | 287                | 37,100         | \$147,629        |
|                       | Raft/Pontoon         | 629                | 62,915               | \$464,942        | 581                 | 63,900                | \$357,201        | 763                 | 99,220                | \$389,935        | 1,973              | 226,035        | \$1,212,077      |
|                       | Stick                |                    |                      |                  | 50                  | 5,500                 | \$30,745         |                     |                       |                  | 50                 | 5,500          | \$30,745         |
|                       | Tray                 | 257                | 25,693               | \$189,871        | 63                  | 6,915                 | \$38,655         | 79                  | 10,310                | \$40,518         | 399                | 42,918         | \$269,044        |
|                       | <b>Estuary Total</b> |                    | <b>886</b>           | <b>88,608</b>    | <b>\$654,813</b>    | <b>704</b>            | <b>77,415</b>    | <b>\$432,750</b>    | <b>1,119</b>          | <b>145,530</b>   | <b>\$571,933</b>   | <b>2,709</b>   | <b>311,553</b>   |
| <b>Manning River</b>  | Baskets              | 0                  | 16                   | \$118            | 0                   | 18                    | \$101            | 0                   | 11                    | \$43             | 0                  | 45             | \$262            |
|                       | Floating             | 3                  | 250                  | \$1,848          | 8                   | 825                   | \$4,612          | 25                  | 3,250                 | \$12,773         | 35                 | 4,325          | \$19,232         |
|                       | Long-line            | 68                 | 6,750                | \$49,883         | 17                  | 1,825                 | \$10,202         | 33                  | 4,250                 | \$16,703         | 117                | 12,825         | \$76,787         |
|                       | Stick                |                    |                      |                  |                     |                       |                  | 24                  | 3,120                 | \$12,262         | 24                 | 3,120          | \$12,262         |
|                       | Tray                 | 740                | 73,955               | \$546,527        | 454                 | 49,889                | \$278,880        | 921                 | 119,778               | \$470,728        | 2,114              | 243,622        | \$1,296,135      |
|                       | <b>Estuary Total</b> |                    | <b>810</b>           | <b>80,971</b>    | <b>\$598,376</b>    | <b>478</b>            | <b>52,557</b>    | <b>\$293,794</b>    | <b>1,003</b>          | <b>130,409</b>   | <b>\$512,507</b>   | <b>2,291</b>   | <b>263,937</b>   |
| <b>Wallis Lake</b>    | Baskets              | 16                 | 1,600                | \$11,824         | 75                  | 8,260                 | \$46,173         | 222                 | 28,912                | \$113,624        | 313                | 38,772         | \$171,622        |
|                       | Stick                | 469                | 46,925               | \$346,776        | 664                 | 73,078                | \$408,506        | 327                 | 42,510                | \$167,064        | 1,461              | 162,513        | \$922,346        |
|                       | Tray                 | 4,069              | 406,859              | \$3,006,688      | 5,863               | 644,911               | \$3,605,052      | 8,210               | 1,067,358             | \$4,194,717      | 18,142             | 2,119,128      | \$10,806,457     |
|                       | <b>Estuary Total</b> |                    | <b>4,554</b>         | <b>455,384</b>   | <b>\$3,365,288</b>  | <b>6,602</b>          | <b>726,249</b>   | <b>\$4,059,732</b>  | <b>8,760</b>          | <b>1,138,780</b> | <b>\$4,475,405</b> | <b>19,916</b>  | <b>2,320,413</b> |
| <b>Port Stephens</b>  | Baskets              | 217                | 21,692               | \$160,304        | 16                  | 1,744                 | \$9,749          | 48                  | 6,220                 | \$24,445         | 281                | 29,656         | \$194,497        |
|                       | Long-line            | 26                 | 2,600                | \$19,214         | 9                   | 1,000                 | \$5,590          | 17                  | 2,167                 | \$8,516          | 52                 | 5,767          | \$33,320         |

| Estuary                 | Type of Cultivation | Plate Grade (Bags) | Plate Grade (Dozens) | Value (\$)         | Bistro Grade (Bags) | Bistro Grade (Dozens) | Value (\$)         | Bottle Grade (Bags) | Bottle Grade (Dozens) | Value (\$)         | Total Bags   | Total Dozens   | Total Value (\$)   |
|-------------------------|---------------------|--------------------|----------------------|--------------------|---------------------|-----------------------|--------------------|---------------------|-----------------------|--------------------|--------------|----------------|--------------------|
|                         | Stick               | 59                 | 5,900                | \$43,601           | 30                  | 3,300                 | \$18,447           | 180                 | 23,400                | \$91,962           | 269          | 32,600         | \$154,010          |
|                         | Tray                | 2,624              | 262,419              | \$1,939,276        | 1,770               | 194,729               | \$1,088,535        | 1211                | 157,380               | \$618,503          | 5,605        | 614,528        | \$3,646,315        |
| <b>Estuary Total</b>    |                     | <b>2,926</b>       | <b>292,611</b>       | <b>\$2,162,395</b> | <b>1,825</b>        | <b>200,773</b>        | <b>\$1,122,321</b> | <b>1,455</b>        | <b>189,167</b>        | <b>\$743,426</b>   | <b>6,206</b> | <b>682,551</b> | <b>\$4,028,143</b> |
| <b>Brisbane Water</b>   | Baskets             | 15                 | 1,450                | \$10,716           | 9                   | 950                   | \$5,311            | 35                  | 4,550                 | \$17,882           | 58           | 6,950          | \$33,908           |
|                         | Floating            |                    |                      |                    | 145                 | 16,000                | \$89,440           | 545                 | 70,880                | \$278,558          | 691          | 86,880         | \$367,998          |
|                         | Long-line           |                    |                      |                    |                     |                       |                    | 71                  | 9,170                 | \$36,038           | 71           | 9,170          | \$36,038           |
|                         | Raft/Pontoon        | 12                 | 1,200                | \$8,868            | 5                   | 600                   | \$3,354            |                     |                       |                    | 17           | 1,800          | \$12,222           |
|                         | Tray                | 404                | 40,350               | \$298,187          | 398                 | 43,827                | \$244,993          | 642                 | 83,398                | \$327,754          | 1,443        | 167,575        | \$870,934          |
| <b>Estuary Total</b>    |                     | <b>430</b>         | <b>43,000</b>        | <b>\$317,770</b>   | <b>558</b>          | <b>61,377</b>         | <b>\$343,097</b>   | <b>1,292</b>        | <b>167,998</b>        | <b>\$660,232</b>   | <b>2,280</b> | <b>272,375</b> | <b>\$1,321,100</b> |
| <b>Hawkesbury River</b> | Tray                | 20                 | 2,000                | \$14,780           | 31                  | 3,400                 | \$19,006           | 39                  | 5,100                 | \$20,043           | 90           | 10,500         | \$53,829           |
| <b>Estuary Total</b>    |                     | <b>20</b>          | <b>2,000</b>         | <b>\$14,780</b>    | <b>31</b>           | <b>3,400</b>          | <b>\$19,006</b>    | <b>39</b>           | <b>5,100</b>          | <b>\$20,043</b>    | <b>90</b>    | <b>10,500</b>  | <b>\$53,829</b>    |
| <b>Shoalhaven River</b> | Baskets             | 27                 | 2,700                | \$19,953           |                     |                       |                    | 28                  | 3,606                 | \$14,172           | 55           | 6,306          | \$34,125           |
|                         | Floating            |                    |                      |                    |                     |                       |                    | 8                   | 1,040                 | \$4,087            | 8            | 1,040          | \$4,087            |
|                         | Long-line           |                    |                      |                    | 71                  | 7,800                 | \$43,602           | 40                  | 5,200                 | \$20,436           | 111          | 13,000         | \$64,038           |
|                         | Tray                | 161                | 16,114               | \$119,082          | 59                  | 6,520                 | \$36,447           | 44                  | 5,695                 | \$22,381           | 264          | 28,329         | \$177,911          |
| <b>Estuary Total</b>    |                     | <b>188</b>         | <b>18,814</b>        | <b>\$139,035</b>   | <b>130</b>          | <b>14,320</b>         | <b>\$80,049</b>    | <b>120</b>          | <b>15,541</b>         | <b>\$61,076</b>    | <b>438</b>   | <b>48,675</b>  | <b>\$280,160</b>   |
| <b>Crookhaven River</b> | Baskets             | 258                | 25,825               | \$190,847          | 163                 | 17,948                | \$100,329          | 180                 | 23,375                | \$91,864           | 601          | 67,148         | \$383,040          |
|                         | Dredge              |                    |                      |                    |                     |                       |                    | 31                  | 4,000                 | \$15,720           | 31           | 4,000          | \$15,720           |
|                         | Floating            | 32                 | 3,150                | \$23,279           | 6                   | 640                   | \$3,578            | 14                  | 1,775                 | \$6,976            | 51           | 5,565          | \$33,832           |
|                         | Tray                | 75                 | 7,497                | \$55,403           | 144                 | 15,842                | \$88,557           | 174                 | 22,582                | \$88,747           | 393          | 45,921         | \$232,707          |
| <b>Estuary Total</b>    |                     | <b>365</b>         | <b>36,472</b>        | <b>\$269,528</b>   | <b>313</b>          | <b>34,430</b>         | <b>\$192,464</b>   | <b>398</b>          | <b>51,732</b>         | <b>\$203,307</b>   | <b>1,076</b> | <b>122,634</b> | <b>\$665,299</b>   |
| <b>Clyde River</b>      | Baskets             | 55                 | 5,534                | \$40,896           | 78                  | 8,600                 | \$48,074           | 80                  | 10,358                | \$40,707           | 213          | 24,492         | \$129,677          |
|                         | Floating            | 390                | 39,000               | \$288,210          | 212                 | 23,334                | \$130,437          | 238                 | 31,000                | \$121,830          | 841          | 93,334         | \$540,477          |
|                         | Raft/Pontoon        | 56                 | 5,644                | \$41,709           | 59                  | 6,498                 | \$36,324           | 19                  | 2,472                 | \$9,715            | 135          | 14,614         | \$87,748           |
|                         | Stick               | 148                | 14,777               | \$109,202          | 112                 | 12,330                | \$68,925           | 874                 | 113,605               | \$446,468          | 1,134        | 140,712        | \$624,594          |
|                         | Tray                | 873                | 87,299               | \$645,140          | 1,456               | 160,132               | \$895,138          | 1,921               | 249,754               | \$981,533          | 4,250        | 497,185        | \$2,521,811        |
| <b>Estuary Total</b>    |                     | <b>1,523</b>       | <b>152,254</b>       | <b>\$1,125,157</b> | <b>1,917</b>        | <b>210,894</b>        | <b>\$1,178,897</b> | <b>3,132</b>        | <b>407,189</b>        | <b>\$1,600,253</b> | <b>6,572</b> | <b>770,337</b> | <b>\$3,904,307</b> |
| <b>Tuross Lake</b>      | Baskets             | 125                | 12,500               | \$92,375           | 154                 | 16,975                | \$94,890           | 47                  | 6,095                 | \$23,953           | 326          | 35,570         | \$211,219          |
|                         | Long-line           | 50                 | 5,000                | \$36,950           | 33                  | 3,575                 | \$19,984           | 50                  | 6,500                 | \$25,545           | 133          | 15,075         | \$82,479           |
|                         | Tray                | 98                 | 9,750                | \$72,053           | 87                  | 9,540                 | \$53,329           | 79                  | 10,280                | \$40,400           | 263          | 29,570         | \$165,782          |
| <b>Estuary Total</b>    |                     | <b>273</b>         | <b>27,250</b>        | <b>\$201,378</b>   | <b>274</b>          | <b>30,090</b>         | <b>\$168,203</b>   | <b>176</b>          | <b>22,875</b>         | <b>\$89,899</b>    | <b>722</b>   | <b>80,215</b>  | <b>\$459,479</b>   |

| Estuary               | Type of Cultivation | Plate Grade (Bags) | Plate Grade (Dozens) | Value (\$)          | Bistro Grade (Bags) | Bistro Grade (Dozens) | Value (\$)          | Bottle Grade (Bags) | Bottle Grade (Dozens) | Value (\$)          | Total Bags    | Total Dozens     | Total Value (\$)    |
|-----------------------|---------------------|--------------------|----------------------|---------------------|---------------------|-----------------------|---------------------|---------------------|-----------------------|---------------------|---------------|------------------|---------------------|
| <b>Wagonga Inlet</b>  | Floating            |                    |                      |                     | 1                   | 110                   | \$615               | 4                   | 455                   | \$1,788             | 5             | 565              | \$2,403             |
|                       | Long-line           | 18                 | 1,800                | \$13,302            | 6                   | 632                   | \$3,533             | 15                  | 2,000                 | \$7,860             | 39            | 4,432            | \$24,695            |
|                       | Stick               | 50                 | 5,000                | \$36,950            | 364                 | 40,000                | \$223,600           | 231                 | 30,000                | \$117,900           | 644           | 75,000           | \$378,450           |
|                       | Tray                | 254                | 25,400               | \$187,706           | 666                 | 73,285                | \$409,663           | 1,067               | 138,717               | \$545,158           | 1,987         | 237,402          | \$1,142,527         |
| <b>Estuary Total</b>  |                     | <b>322</b>         | <b>32,200</b>        | <b>\$237,958</b>    | <b>1,037</b>        | <b>114,027</b>        | <b>\$637,411</b>    | <b>1,317</b>        | <b>171,172</b>        | <b>\$672,706</b>    | <b>2,675</b>  | <b>317,399</b>   | <b>\$1,548,075</b>  |
| <b>Wapengo Lake</b>   | Baskets             | 13                 | 1,300                | \$9,607             | 78                  | 8,580                 | \$47,962            | 57                  | 7,345                 | \$28,866            | 148           | 17,225           | \$86,435            |
|                       | Stick               | 60                 | 6,020                | \$44,488            | 97                  | 10,700                | \$59,813            |                     |                       |                     | 157           | 16,720           | \$104,301           |
|                       | Tray                | 42                 | 4,235                | \$31,297            | 143                 | 15,775                | \$88,182            | 118                 | 15,350                | \$60,326            | 304           | 35,360           | \$179,804           |
| <b>Estuary Total</b>  |                     | <b>116</b>         | <b>11,555</b>        | <b>\$85,391</b>     | <b>319</b>          | <b>35,055</b>         | <b>\$195,957</b>    | <b>175</b>          | <b>22,695</b>         | <b>\$89,191</b>     | <b>609</b>    | <b>69,305</b>    | <b>\$370,540</b>    |
| <b>Merimbula Lake</b> | Floating            | 8                  | 800                  | \$5,912             | 18                  | 1,980                 | \$11,068            | 20                  | 2,600                 | \$10,218            | 46            | 5,380            | \$27,198            |
|                       | Long-line           | 45                 | 4,500                | \$33,255            | 58                  | 6,400                 | \$35,776            | 12                  | 1,550                 | \$6,092             | 115           | 12,450           | \$75,123            |
|                       | Stick               | 185                | 18,500               | \$136,715           | 25                  | 2,750                 | \$15,373            | 70                  | 9,100                 | \$35,763            | 280           | 30,350           | \$187,851           |
|                       | Tray                | 930                | 92,960               | \$686,974           | 575                 | 63,277                | \$353,718           | 360                 | 46,744                | \$183,704           | 1,864         | 202,981          | \$1,224,397         |
| <b>Estuary Total</b>  |                     | <b>1,168</b>       | <b>116,760</b>       | <b>\$862,856</b>    | <b>676</b>          | <b>74,407</b>         | <b>\$415,935</b>    | <b>461</b>          | <b>59,994</b>         | <b>\$235,776</b>    | <b>2,306</b>  | <b>251,161</b>   | <b>\$1,514,568</b>  |
| <b>Pambula River</b>  | Baskets             | 10                 | 1,000                | \$7,390             |                     |                       |                     |                     |                       |                     | 10            | 1,000            | \$7,390             |
|                       | Floating            | 52                 | 5,214                | \$38,531            | 36                  | 3,911                 | \$21,862            | 16                  | 2,133                 | \$8,383             | 104           | 11,258           | \$68,777            |
|                       | Long-line           | 32                 | 3,200                | \$23,648            | 1                   | 120                   | \$671               |                     |                       |                     | 33            | 3,320            | \$24,319            |
|                       | Tray                | 311                | 31,053               | \$229,482           | 545                 | 59,912                | \$334,908           | 695                 | 90,351                | \$355,079           | 1,550         | 181,316          | \$919,469           |
| <b>Estuary Total</b>  |                     | <b>405</b>         | <b>40,467</b>        | <b>\$299,051</b>    | <b>581</b>          | <b>63,943</b>         | <b>\$357,441</b>    | <b>711</b>          | <b>92,484</b>         | <b>\$363,462</b>    | <b>1,697</b>  | <b>196,894</b>   | <b>\$1,019,955</b>  |
| <b>Wonboyn River</b>  | Floating            | 227                | 22,706               | \$167,797           | 171                 | 18,774                | \$104,947           | 34                  | 4,422                 | \$17,378            | 432           | 45,902           | \$290,122           |
|                       | Long-line           |                    |                      |                     | 3                   | 321                   | \$1,794             | 3                   | 407                   | \$1,600             | 6             | 728              | \$3,394             |
|                       | Tray                | 37                 | 3,702                | \$27,358            | 24                  | 2,620                 | \$14,646            | 22                  | 2,900                 | \$11,397            | 83            | 9,222            | \$53,401            |
| <b>Estuary Total</b>  |                     | <b>264</b>         | <b>26,408</b>        | <b>\$195,155</b>    | <b>197</b>          | <b>21,715</b>         | <b>\$121,387</b>    | <b>59</b>           | <b>7,729</b>          | <b>\$30,375</b>     | <b>521</b>    | <b>55,852</b>    | <b>\$346,917</b>    |
| <b>Others</b>         | Baskets             |                    |                      |                     | 2                   | 176                   | \$984               | 12                  | 1,585                 | \$6,229             | 14            | 1,761            | \$7,213             |
|                       | Raft/Pontoon        | 358                | 35,750               | \$264,193           | 219                 | 24,075                | \$134,579           | 81                  | 10,480                | \$41,186            | 657           | 70,305           | \$439,958           |
|                       | Slats               | 5                  | 485                  | \$3,584             | 54                  | 5,954                 | \$33,283            | 100                 | 13,050                | \$51,287            | 159           | 19,489           | \$88,154            |
|                       | Tray                | 622                | 62,195               | \$459,621           | 791                 | 86,978                | \$486,207           | 368                 | 47,865                | \$188,109           | 1,781         | 197,038          | \$1,133,938         |
| <b>Others Total</b>   |                     | <b>985</b>         | <b>98,430</b>        | <b>\$727,398</b>    | <b>1,066</b>        | <b>117,183</b>        | <b>\$655,053</b>    | <b>561</b>          | <b>72,980</b>         | <b>\$286,811</b>    | <b>2,612</b>  | <b>288,593</b>   | <b>\$1,669,262</b>  |
| <b>TOTALS</b>         |                     | <b>16,258</b>      | <b>1,625,830</b>     | <b>\$12,014,884</b> | <b>18,215</b>       | <b>2,003,646</b>      | <b>\$11,200,381</b> | <b>22,269</b>       | <b>2,894,991</b>      | <b>\$11,377,315</b> | <b>56,744</b> | <b>6,524,467</b> | <b>\$34,592,579</b> |

\*\*Others not named for confidentiality include: Tweed River, Richmond River, Clarence River, Woolli Woolli River, Bellinger River, Hunter River, Patonga Creek, Botany Bay, Bermagui River & Nelson Lagoon. **Please Note: Due to rounding effect there may be some small variances in bag quantities and \$ value.**

**Table 6: Sydney Rock Oyster Sales by Market**

| Market Description      | Plate Grade   |                  |                     | Bistro Grade  |                  |                     | Bottle Grade  |                  |                     | Total         |                  |                     |
|-------------------------|---------------|------------------|---------------------|---------------|------------------|---------------------|---------------|------------------|---------------------|---------------|------------------|---------------------|
|                         | Bags          | Dozens           | Value (\$)          | Bags          | Dozens           | Value (\$)          | Bags          | Dozens           | Value (\$)          | Bags          | Dozens           | Value (\$)          |
| Export                  | 37            | 3,740            | \$27,639            |               |                  |                     | 12            | 1,500            | \$5,895             | 49            | 5,240            | \$33,534            |
| Interstate              | 1,540         | 154,012          | \$1,138,149         | 3,154         | 346,955          | \$1,939,478         | 5,716         | 743,102          | \$2,920,391         | 10,410        | 1,244,069        | \$5,998,018         |
| Local                   | 4,008         | 400,839          | \$2,962,200         | 4,491         | 494,002          | \$2,761,471         | 4,682         | 608,703          | \$2,392,203         | 13,182        | 1,503,544        | \$8,115,874         |
| NSW (Other than Sydney) | 1,338         | 133,783          | \$988,656           | 1,823         | 200,582          | \$1,121,253         | 3,282         | 426,709          | \$1,676,966         | 6,444         | 761,074          | \$3,786,876         |
| Sydney                  | 9,335         | 933,456          | \$6,898,240         | 8,746         | 962,107          | \$5,378,178         | 8,577         | 1,114,977        | \$4,381,860         | 26,658        | 3,010,540        | \$16,658,278        |
| <b>Totals</b>           | <b>16,258</b> | <b>1,625,830</b> | <b>\$12,014,884</b> | <b>18,215</b> | <b>2,003,646</b> | <b>\$11,200,381</b> | <b>22,269</b> | <b>2,894,991</b> | <b>\$11,377,315</b> | <b>56,742</b> | <b>6,524,467</b> | <b>\$34,592,579</b> |

Please Note: Due to rounding effect there may be some small variances in bag quantities and \$ value.

**Table 7: Sydney Rock Oyster Sales by Production Method**

| Type of Cultivation | Plate Grade   |                  |                     | Bistro Grade  |                  |                     | Bottle Grade  |                  |                     | Total         |                  |                     |
|---------------------|---------------|------------------|---------------------|---------------|------------------|---------------------|---------------|------------------|---------------------|---------------|------------------|---------------------|
|                     | Bags          | Dozens           | Value (\$)          | Bags          | Dozens           | Value (\$)          | Bags          | Dozens           | Value (\$)          | Bags          | Dozens           | Value (\$)          |
| Baskets             | 794           | 79,428           | \$586,973           | 726           | 79,860           | \$446,417           | 1,215         | 157,992          | \$620,909           | 2,736         | 317,280          | \$1,654,299         |
| Dredge              |               |                  |                     |               |                  |                     | 31            | 4,000            | \$15,720            | 31            | 4,000            | \$15,720            |
| Floating            | 800           | 79,964           | \$590,934           | 663           | 72,973           | \$407,919           | 1,209         | 157,158          | \$617,631           | 2,672         | 310,095          | \$1,616,484         |
| Long-line           | 268           | 26,800           | \$198,052           | 234           | 25,743           | \$143,903           | 251           | 32,674           | \$128,409           | 753           | 85,217           | \$470,364           |
| Raft/Pontoon        | 1,396         | 139,603          | \$1,031,666         | 1,513         | 166,477          | \$930,606           | 1,283         | 166,829          | \$655,638           | 4,193         | 472,909          | \$2,617,911         |
| Slats               | 5             | 485              | \$3,584             | 54            | 5,954            | \$33,283            | 100           | 13,050           | \$51,287            | 159           | 19,489           | \$88,154            |
| Stick               | 971           | 97,122           | \$717,732           | 1,342         | 147,658          | \$825,408           | 1,706         | 221,735          | \$871,419           | 4,019         | 466,515          | \$2,414,558         |
| Tray                | 12,024        | 1,202,428        | \$8,885,943         | 13,682        | 1,504,981        | \$8,412,844         | 16,473        | 2,141,553        | \$8,416,303         | 42,179        | 4,848,962        | \$25,715,090        |
| <b>Totals</b>       | <b>16,258</b> | <b>1,625,830</b> | <b>\$12,014,884</b> | <b>18,215</b> | <b>2,003,646</b> | <b>\$11,200,381</b> | <b>22,269</b> | <b>2,894,991</b> | <b>\$11,377,315</b> | <b>56,742</b> | <b>6,524,467</b> | <b>\$34,592,579</b> |

Please Note: Due to rounding effect there may be some small variances in bag quantities and \$ value.

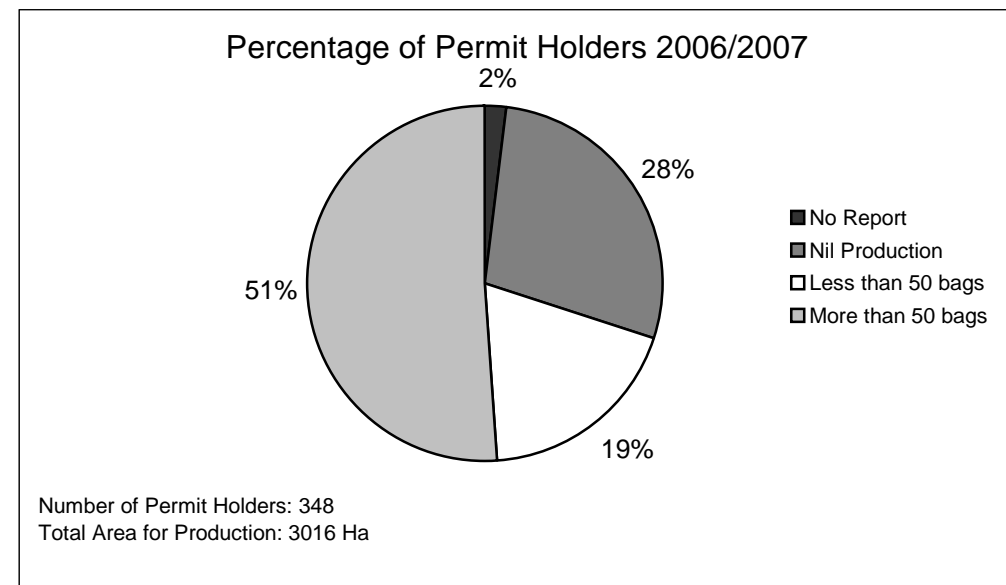
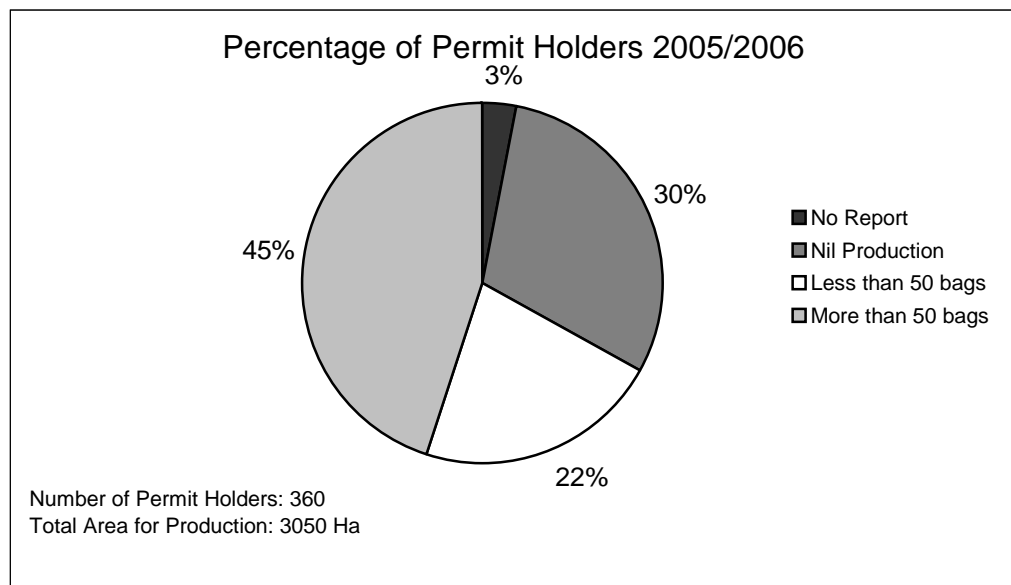
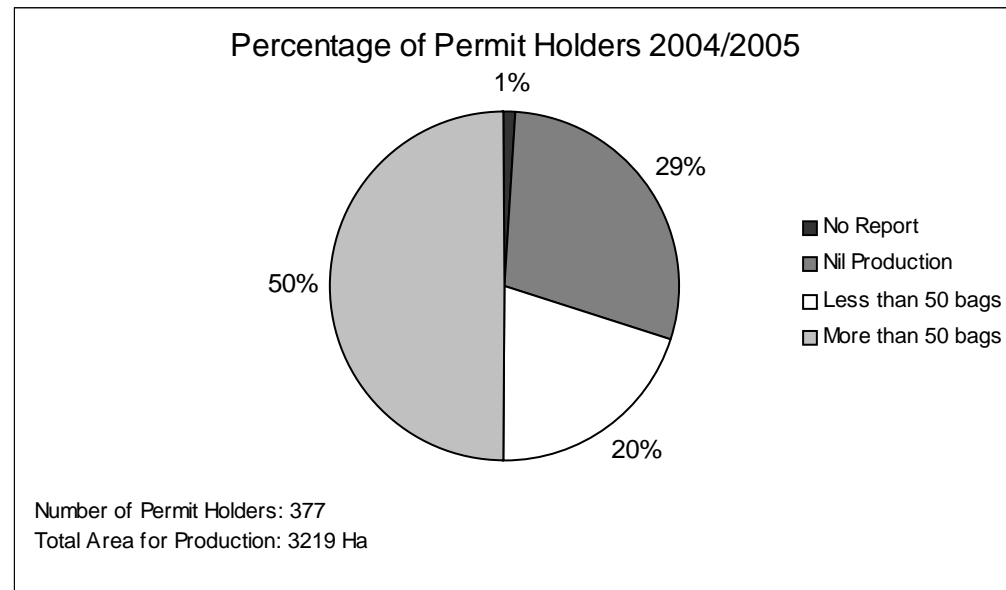
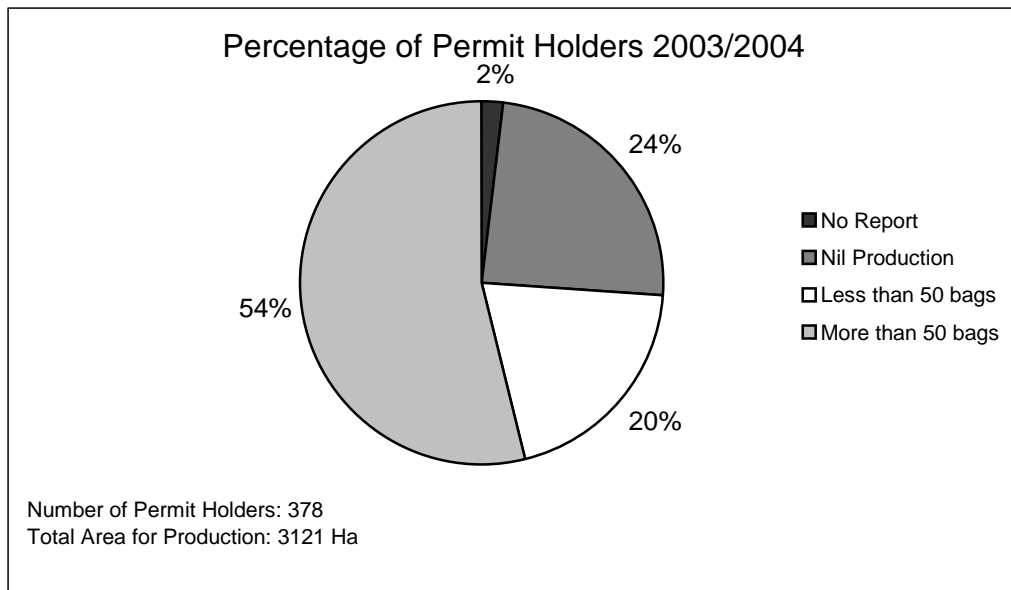
**Table 8: Sydney Rock Oyster Sales by Permit Holders**

| Production Range                  | 0 Bags<br>No Prod<br>Report<br>Returned | 0 Bags<br>(nil<br>prod) | <=25<br>Bags | >25 and<br><=50<br>Bags | >50 and<br><= 100<br>Bags | >100 and<br><=150<br>Bags | >150 and<br><= 250<br>Bags | >250 and<br><= 500 Bags | >500 and<br><=1000 Bags | >1000<br>Bags | Totals       |
|-----------------------------------|---|-------------------------|--------------|-------------------------|---------------------------|---------------------------|----------------------------|-------------------------|-------------------------|---------------|--------------|
| Percentage of Permit Holders *    | 2                                       | 28                      | 11 (15)      | 8 (12)                  | 14 (21)                   | 12 (17)                   | 8 (12)                     | 9 (12)                  | 6 (8)                   | 2 (3)         | 100          |
| Number of Permit Holders          | 8                                       | 98                      | 37           | 28                      | 50                        | 41                        | 28                         | 30                      | 20                      | 8             | 348          |
| Quantity Produced (bags)          | 0                                       | 0                       | 410          | 1,150                   | 3,909                     | 5,245                     | 5,665                      | 9,943                   | 13,573                  | 16,857        | 56,752       |
| Quantity Produced (dozens)        | 0                                       | 0                       | 45,901       | 130,565                 | 448,104                   | 589,330                   | 634,689                    | 1,132,248               | 1,562,654               | 1,980,976     | 6,524,467    |
| Percentage of production (dozens) |   |                         | 1            | 2                       | 7                         | 9                         | 10                         | 17                      | 24                      | 30            | 100          |
| Total Value (\$)                  |   |                         | \$252,301    | \$710,339               | \$2,378,493               | \$3,289,434               | \$3,571,393                | \$6,153,030             | \$8,288,444             | \$9,949,142   | \$34,592,578 |

\* Number in brackets is the percentage of permit holders excluding nil production and reports not returned.

**Please Note: Due to rounding effect there may be some small variances in bag quantities and \$ value.**

**Figure B: Percentage of Oyster Permit Holders by Production Range**



**Table 9: Sydney Rock Oyster Sales by Estuary**

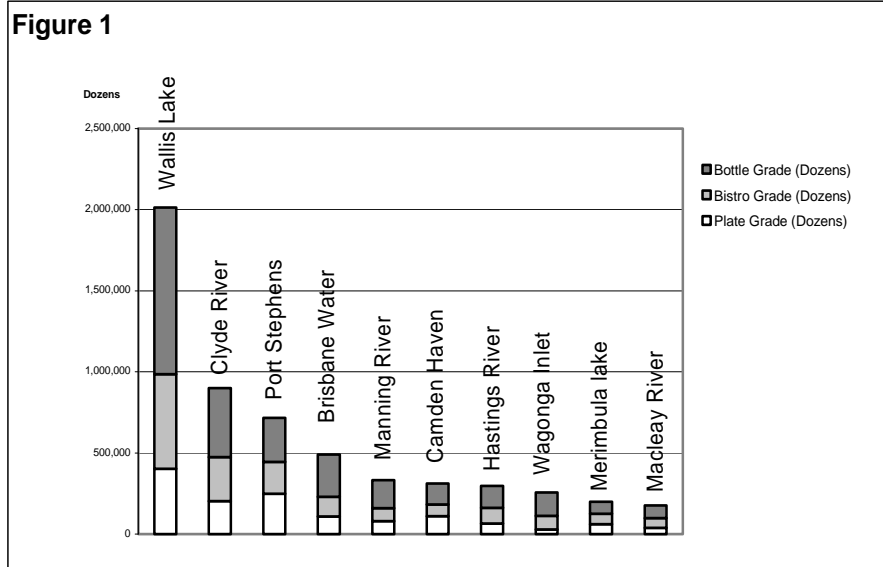
| Estuary          | Plate Grade   |                  |                     | Bistro Grade  |                  |                     | Bottle Grade  |                  |                     | Total         |                  |                     |
|------------------|---------------|------------------|---------------------|---------------|------------------|---------------------|---------------|------------------|---------------------|---------------|------------------|---------------------|
|                  | Bags          | Dozens           | Value (\$)          | Bags          | Dozens           | Value (\$)          | Bags          | Dozens           | Value (\$)          | Bags          | Dozens           | Value (\$)          |
| Nambucca River   | 308           | 30,823           | \$227,782           | 540           | 59,362           | \$331,834           | 132           | 17,161           | \$67,443            | 980           | 107,346          | \$627,058           |
| Macleay River    | 53            | 5,271            | \$38,953            | 99            | 10,940           | \$61,155            | 216           | 28,116           | \$110,496           | 368           | 44,327           | \$210,603           |
| Hastings River   | 666           | 66,552           | \$491,819           | 868           | 95,509           | \$533,895           | 1,141         | 148,339          | \$582,972           | 2,675         | 310,400          | \$1,608,687         |
| Camden Haven     | 886           | 88,608           | \$654,813           | 704           | 77,415           | \$432,750           | 1,119         | 145,530          | \$571,933           | 2,709         | 311,553          | \$1,659,496         |
| Manning River    | 810           | 80,971           | \$598,376           | 478           | 52,557           | \$293,794           | 1,003         | 130,409          | \$512,507           | 2,291         | 263,937          | \$1,404,677         |
| Wallis Lake      | 4,554         | 455,384          | \$3,365,288         | 6,602         | 726,249          | \$4,059,732         | 8,760         | 1,138,780        | \$4,475,405         | 19,916        | 2,320,413        | \$11,900,425        |
| Port Stephens    | 2,926         | 292,611          | \$2,162,395         | 1,825         | 200,773          | \$1,122,321         | 1,455         | 189,167          | \$743,426           | 6,206         | 682,551          | \$4,028,143         |
| Brisbane Water   | 430           | 43,000           | \$317,770           | 558           | 61,377           | \$343,097           | 1,292         | 167,998          | \$660,232           | 2,280         | 272,375          | \$1,321,100         |
| Hawkesbury River | 20            | 2,000            | \$14,780            | 31            | 3,400            | \$19,006            | 39            | 5,100            | \$20,043            | 90            | 10,500           | \$53,829            |
| Shoalhaven River | 188           | 18,814           | \$139,035           | 130           | 14,320           | \$80,049            | 120           | 15,541           | \$61,076            | 438           | 48,675           | \$280,160           |
| Crookhaven River | 365           | 36,472           | \$269,528           | 313           | 34,430           | \$192,464           | 398           | 51,732           | \$203,307           | 1,076         | 122,634          | \$665,299           |
| Clyde River      | 1,523         | 152,254          | \$1,125,157         | 1,917         | 210,894          | \$1,178,897         | 3,132         | 407,189          | \$1,600,253         | 6,572         | 770,337          | \$3,904,307         |
| Tuross Lake      | 273           | 27,250           | \$201,378           | 274           | 30,090           | \$168,203           | 176           | 22,875           | \$89,899            | 722           | 80,215           | \$459,479           |
| Wagonga Inlet    | 322           | 32,200           | \$237,958           | 1,037         | 114,027          | \$637,411           | 1,317         | 171,172          | \$672,706           | 2,675         | 317,399          | \$1,548,075         |
| Wapengo Lake     | 116           | 11,555           | \$85,391            | 319           | 35,055           | \$195,957           | 175           | 22,695           | \$89,191            | 609           | 69,305           | \$370,540           |
| Merimbula Lake   | 1,168         | 116,760          | \$862,856           | 676           | 74,407           | \$415,935           | 461           | 59,994           | \$235,776           | 2,306         | 251,161          | \$1,514,568         |
| Pambula River    | 405           | 40,467           | \$299,051           | 581           | 63,943           | \$357,441           | 711           | 92,484           | \$363,462           | 1,697         | 196,894          | \$1,019,955         |
| Wonboyn River    | 264           | 26,408           | \$195,155           | 197           | 21,715           | \$121,387           | 59            | 7,729            | \$30,375            | 521           | 55,852           | \$346,917           |
| Others**         | 984           | 98,430           | \$727,399           | 1,067         | 117,183          | \$655,054           | 562           | 72,980           | \$286,811           | 2,613         | 288,593          | \$1,669,263         |
| <b>Totals</b>    | <b>16,258</b> | <b>1,625,830</b> | <b>\$12,014,884</b> | <b>18,215</b> | <b>2,003,646</b> | <b>\$11,200,381</b> | <b>22,269</b> | <b>2,894,991</b> | <b>\$11,377,315</b> | <b>56,742</b> | <b>6,524,467</b> | <b>\$34,592,579</b> |

\*\*Others not named for confidentiality include Tweed River, Richmond River, Clarence River, Woolli Woolli River, Bellinger River, Hunter River, Patonga Creek, Botany Bay, Bermagui River & Nelson Lagoon.

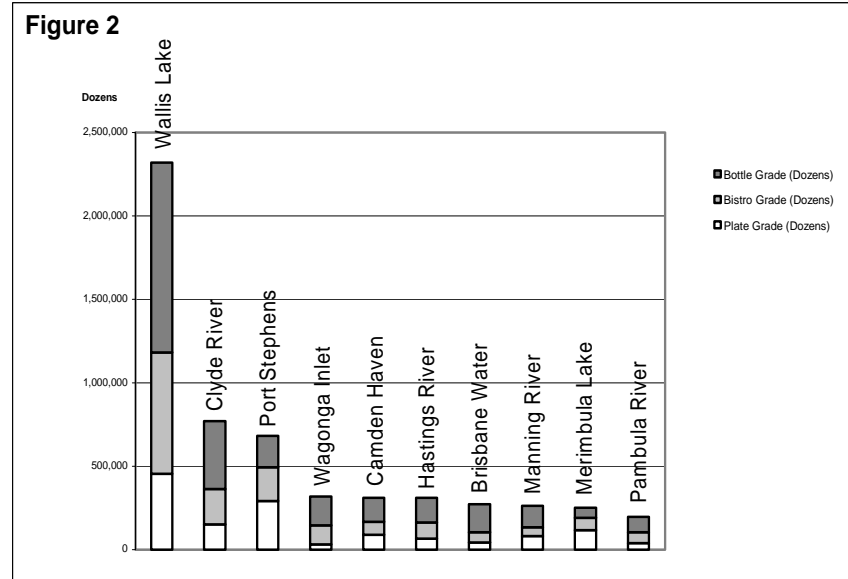
**Please Note: Due to rounding effect there may be some small variances in bag quantities and \$ value.**

# Figure C: Comparative Graphs: Sydney Rock Oyster (SRO) Production

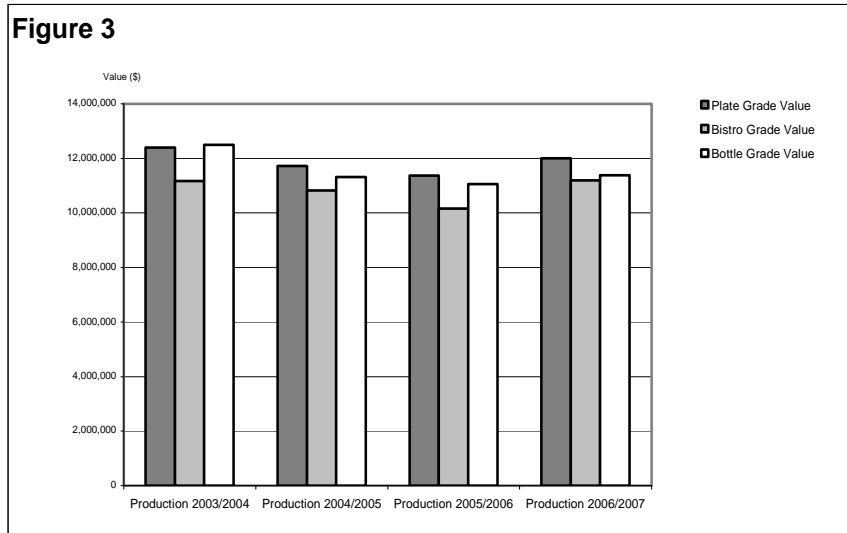
The ten most productive estuaries for the cultivation and sale of SRO in 2005/2006



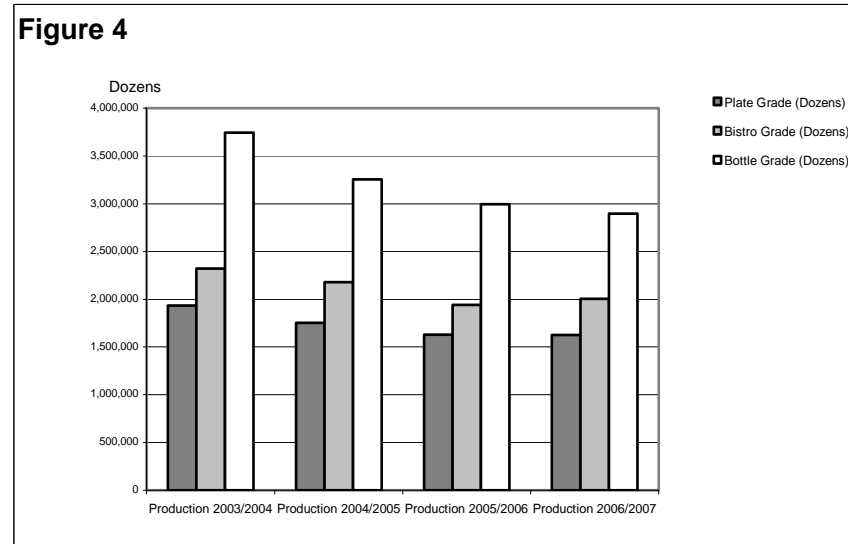
The ten most productive estuaries for cultivation and sale of SRO in 2006/2007



Value of plate, bistro and bottle/cocktail grade SRO production in 2003/2004, 2004/2005 and 2005/2006 compared to 2006/2007



The quantity of plate, bistro and bottle/cocktail grade SRO production in 2003/2004, 2004/2005 and 2005/2006 compared to 2006/2007





**Table 10: Pacific Oyster Sales from Port Stephens**

|              | Grade 1 |         |            | Grade 2 |        |            | Grade 3 |        |            | Total |         |             |
|--------------|---------|---------|------------|---------|--------|------------|---------|--------|------------|-------|---------|-------------|
|              | Bags    | Dozens  | Value (\$) | Bags    | Dozens | Value (\$) | Bags    | Dozens | Value (\$) | Bags  | Dozens  | Value (\$)  |
| <b>Total</b> | 1,479   | 112,405 | \$647,453  | 407     | 48,789 | \$242,481  | 211     | 31,633 | \$114,828  | 2,096 | 192,827 | \$1,004,762 |

**Table 11: Pacific Oyster Sales by Production Method**

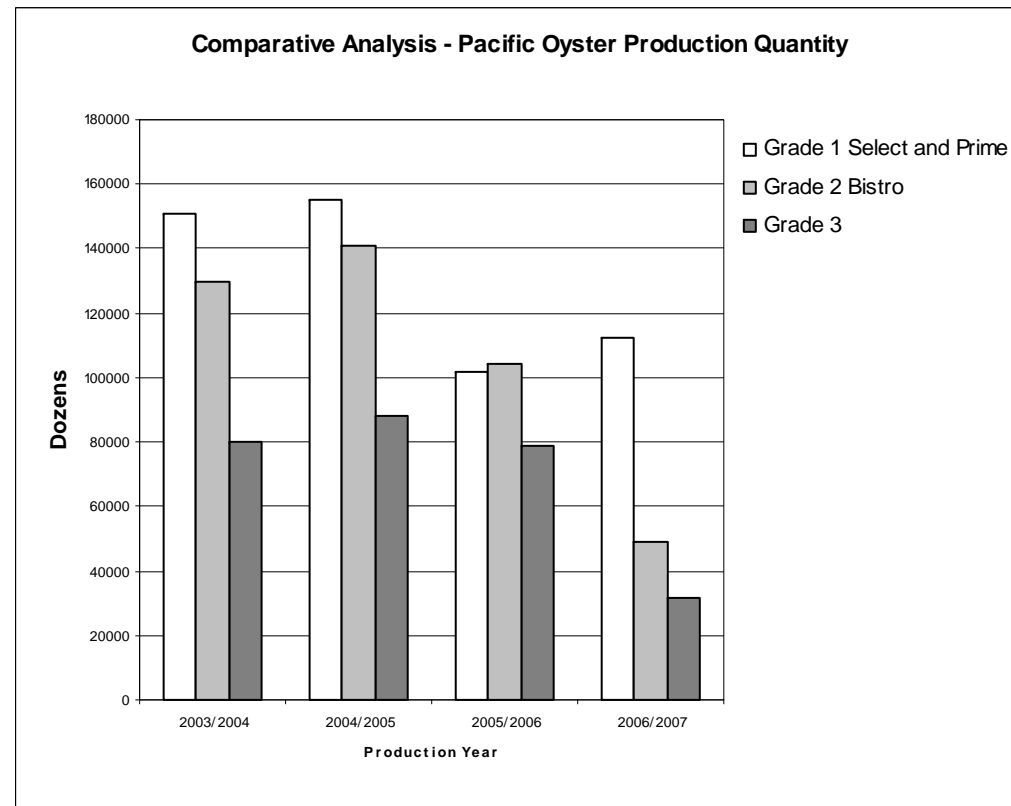
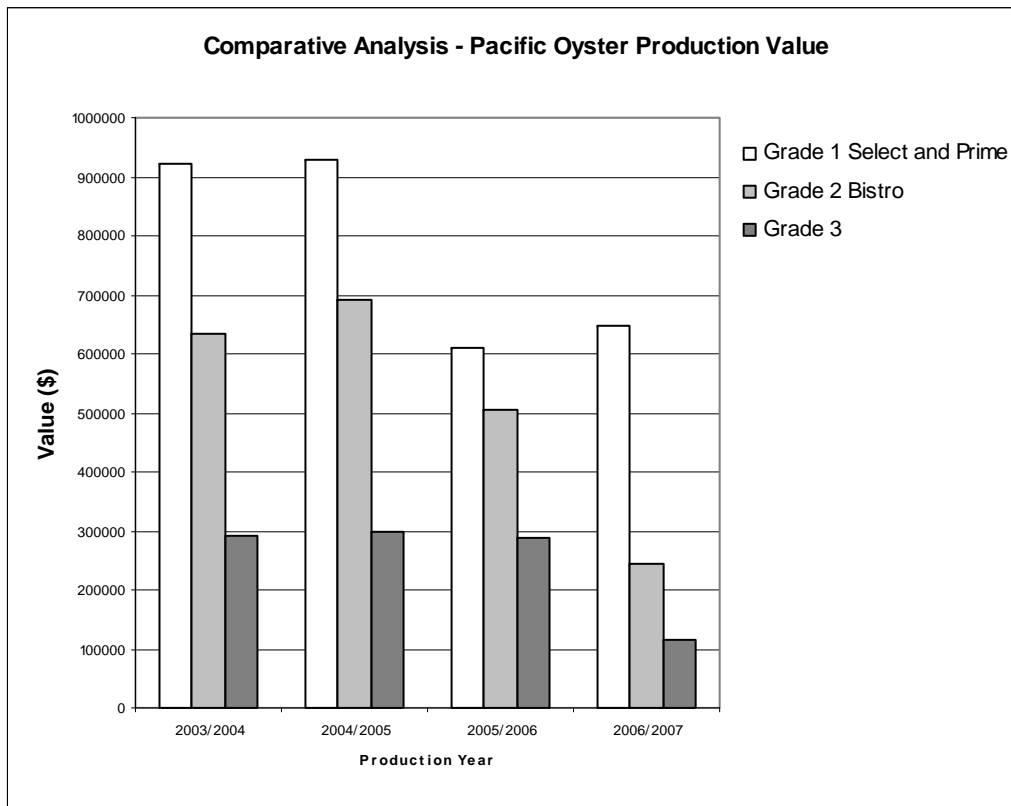
| Type of Cultivation | Grade 1 |         |            | Grade 2 |        |            | Grade 3 |        |            | Total |         |             |
|---------------------|---------|---------|------------|---------|--------|------------|---------|--------|------------|-------|---------|-------------|
|                     | Bags    | Dozens  | Value (\$) | Bags    | Dozens | Value (\$) | Bags    | Dozens | Value (\$) | Bags  | Dozens  | Value (\$)  |
| <b>Baskets</b>      | 346     | 26,323  | \$151,620  | 58      | 7,012  | \$34,850   | 13      | 1,912  | \$6,941    | 418   | 35,247  | \$193,411   |
| <b>Long-line</b>    | 757     | 57,521  | \$331,321  | 204     | 24,431 | \$121,422  | 102     | 15,338 | \$55,677   | 1,063 | 97,290  | \$508,420   |
| <b>Stick</b>        | 10      | 760     | \$4,378    | 5       | 600    | \$2,982    | 10      | 1,500  | \$5,445    | 25    | 2,860   | \$12,805    |
| <b>Tray</b>         | 366     | 27,801  | \$160,134  | 140     | 16,746 | \$83,228   | 86      | 12,883 | \$46,765   | 591   | 57,430  | \$290,127   |
| <b>Total</b>        | 1,479   | 112,405 | \$647,453  | 407     | 48,789 | \$242,481  | 211     | 31,633 | \$114,828  | 2,096 | 192,827 | \$1,004,762 |

**Table 12: Pacific Oyster Sales by Market**

| Market Description             | Grade 1 |         |            | Grade 2 |        |            | Grade 3 |        |            | Total |         |             |
|--------------------------------|---------|---------|------------|---------|--------|------------|---------|--------|------------|-------|---------|-------------|
|                                | Bags    | Dozens  | Value (\$) | Bags    | Dozens | Value (\$) | Bags    | Dozens | Value (\$) | Bags  | Dozens  | Value (\$)  |
| <b>Interstate</b>              | 534     | 40,571  | \$233,689  | 183     | 22,010 | \$109,390  | 107     | 16,104 | \$58,458   | 825   | 78,685  | \$401,536   |
| <b>Local</b>                   | 318     | 24,182  | \$139,288  | 141     | 16,930 | \$84,142   | 50      | 7,504  | \$27,240   | 509   | 48,616  | \$250,670   |
| <b>NSW (Other than Sydney)</b> | 156     | 11,850  | \$68,256   | 61      | 7,364  | \$36,599   | 49      | 7,405  | \$26,880   | 267   | 26,619  | \$131,735   |
| <b>Sydney</b>                  | 471     | 35,802  | \$206,220  | 21      | 2,485  | \$12,350   | 4       | 620    | \$2,251    | 496   | 38,907  | \$220,821   |
| <b>Total</b>                   | 1,479   | 112,405 | \$647,453  | 407     | 48,789 | \$242,481  | 211     | 31,633 | \$114,828  | 2,096 | 192,827 | \$1,004,762 |

Please Note: Due to rounding effect there may be some small variances in bag quantities and \$ value.

**Figure D: Comparative Graphs – Pacific Oyster Production**



**Table 13: Spat Production Value by Cultivation Method**

| Type of Cultivation     | Large Spat (\$)  | Medium Spat (\$) | Small Spat (\$)  | Total Value (\$)   |
|-------------------------|------------------|------------------|------------------|--------------------|
| Hatchery Single Seed    | \$54,373         | \$198,845        | \$344,630        | \$597,848          |
| Stick                   | \$45,900         | \$102,000        | \$23,000         | \$170,900          |
| Wild Caught Single Seed | \$675,138        | \$560,124        | \$162,000        | \$1,397,262        |
| <b>Total Value</b>      | <b>\$775,411</b> | <b>\$860,969</b> | <b>\$529,630</b> | <b>\$2,166,010</b> |

Note: Values include figures for Sydney rock oyster, Pacific oyster and flat oyster spat.

**Table 14: Spat Sales by Estuary**

| Estuary        | Large Spat       |                  | Medium Spat       |                  | Small Spat        |                  | Total             |                    |
|----------------|------------------|------------------|-------------------|------------------|-------------------|------------------|-------------------|--------------------|
|                | Quantity         | Value (\$)       | Quantity          | Value (\$)       | Quantity          | Value (\$)       | Quantity          | Value (\$)         |
| Hastings River | 4,140,340        | \$400,920        | 5,214,600         | \$354,970        | 5,470,000         | \$106,000        | 14,824,940        | \$861,890          |
| Port Stephens  | 1,923,580        | \$194,789        | 7,049,200         | \$277,250        |                   |                  | 8,972,780         | \$472,039          |
| **Others       | 2,336,420        | \$179,702        | 1,950,661         | \$228,749        | 13,568,300        | \$423,630        | 17,855,381        | \$832,081          |
| <b>Total</b>   | <b>8,400,340</b> | <b>\$775,411</b> | <b>14,214,461</b> | <b>\$860,969</b> | <b>19,038,300</b> | <b>\$529,630</b> | <b>41,653,101</b> | <b>\$2,166,010</b> |

\*\*Others not named for confidentiality reasons include: Woolli Woolli River, Bellinger River, Nambucca River, Macleay River, Camden Haven, Manning River, Wallis Lake, Hunter River, Brisbane Water, Crookhaven River, Moruya River, Wagonga Inlet, Wapengo Lake, Pambula River & Wonboyn River.

## **Appendix 1. Oyster Price and Weight Conversions**

For the purposes of this report the following estimates have been developed on data supplied by permit holders:

### **Sydney Rock Oysters**

1 bag of Plate Grade Oysters = 100 dozen @ a Farm Gate Price of \$739.00 per bag.

1 bag of Bistro Grade Oysters = 110 dozen @ a Farm Gate Price of \$614.90 per bag.

1 bag of Bottle/Cocktail Grade Oysters = 130 dozen @ a Farm Gate Price of \$510.90 per bag.

### **Pacific Oysters**

1 bag of Grade 1 (Select and Prime) Pacific Oysters = 76 dozen @ a Farm Gate Price of \$437.76 per bag.

1 bag of Grade 2 (Bistro) Pacific Oysters = 120 dozen @ a Farm Gate Price of \$596.40 per bag.

1 bag of Grade 3 (Mini) Pacific Oysters = 150 dozen @ a Farm Gate Price of \$544.50 per bag.

### **Weight Conversions**

An approximate conversion to production by weight for Sydney rock oysters can be made at the rate of 14 bags to the tonne.