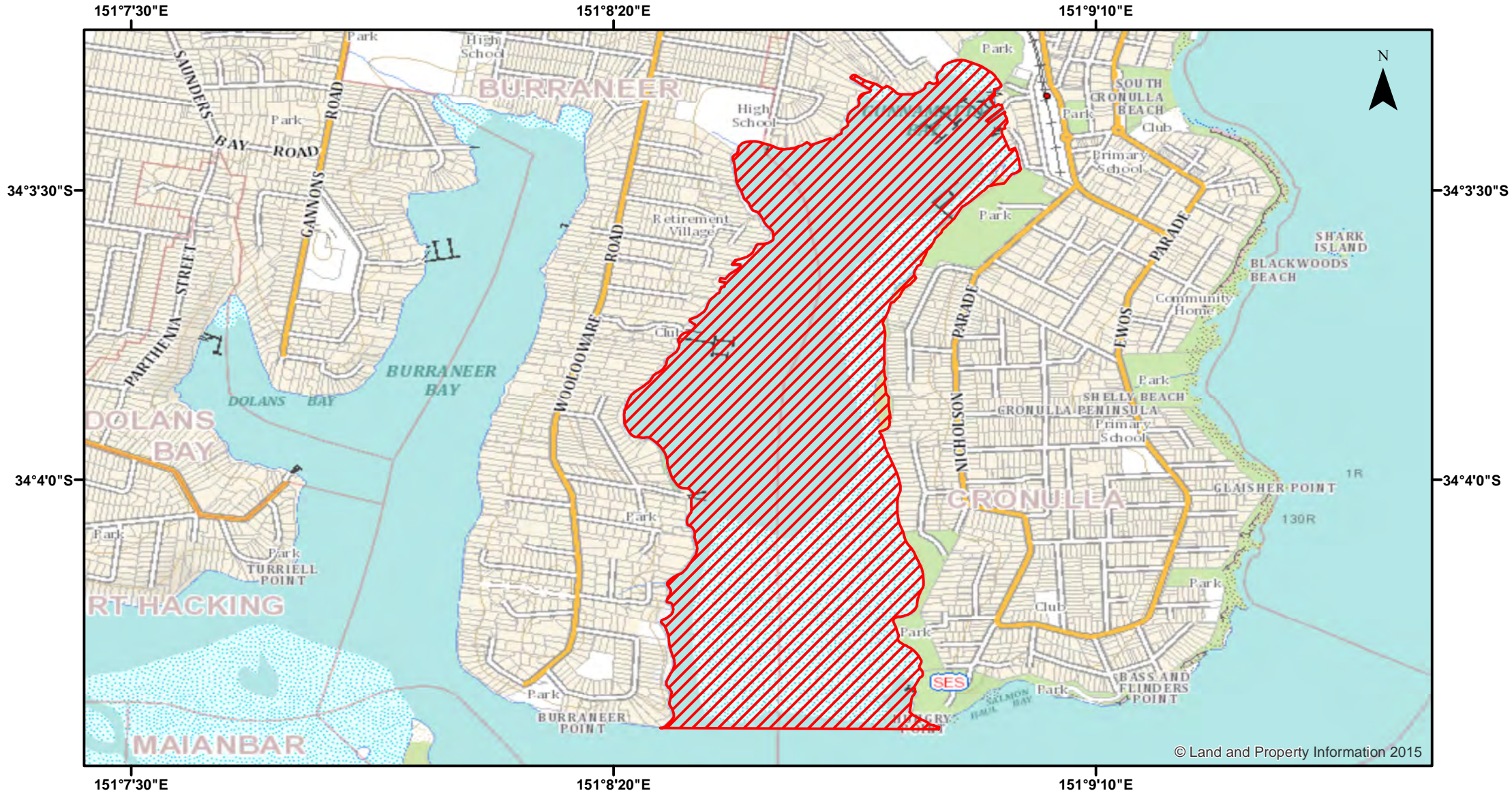


Port Hacking - Gunnamatta Bay



© Land and Property Information 2015



Closure

NSW DPI 25 May 2018
Coordinates are shown in WGS84

Notice to Map Users
Additional closures may apply. Primary Industries and its employees disclaim all liability for any actions or consequences arising from the use of this information. This map is not to be used for navigational purposes as it is indicative only and not guaranteed to be free of error or omission.

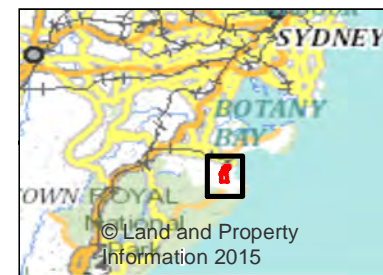
Closed Waters
The whole of the waters of that part of Port Hacking being Gunnamatta Bay and its tributaries of that part north of a line extending north-easterly from the southernmost extremity of Burremeer (Burremeer) Point to the southernmost extremity of Hungry Point.

Prohibited Species
All species of worms (Class: POLYCHAETA), nippers (Family: CALLIANASSIDAE), shellfish (Class: GASTROPODA / BIVALVIA).

0 0.15 0.3 0.6 0.9 1.2



Kilometers



© Land and Property Information 2015