



NSW Guide
www.dpi.nsw.gov.au

FREE!

Go Freshwater Fishing

Featured Location:

Blowering Dam



Stocked impoundment & home to
**MEGA SIZED
MURRAY COD!**

Foreword from NSW DPI



Contents

Overview	3
Blowering Dam Map	5
Key target species	6
Fact box: Winter Murray cod on big soft plastics	9
Fact box: Correct handling	10
Handy knots	11

Cover image: Rhys Creed. Image of Golden Perch: NSW DPI Image Library - Gunther Schmida.
All other images: Rhys Creed. Fish illustrations: Pat Tully
16376 08/2022

This fishing location guide is produced by the NSW Department of Primary Industries (NSW DPI) LMB 3020 Nowra NSW 2541, for and on the behalf of the state of New South Wales. This guide is produced using funds from the Recreational Fishing Trust as part of our commitment to providing recreational fishers with comprehensive, user-friendly information.

© State of New South Wales through Department of Regional NSW [2022].

Disclaimers

This publication may provide assistance or information but NSW DPI and its employees do not guarantee the publication is without flaw or is wholly appropriate for any particular purpose and therefore disclaims all liability for any error, loss or other consequence which may arise from relying on any information in this publication. This publication is a guide only, it does not replace the *Fisheries Management Act 1994* or other acts and statutory rules applying to or affecting recreational fishing. It is a summary of laws and regulations at the time of publication and cannot be used as a defence in a court of law.

Recreational fishing regulations may change during the lifetime of this publication. It is the responsibility of fishers to ensure they are acting within the law at all times. Check regulations with your local NSW DPI fisheries office or www.dpi.nsw.gov.au/fisheries.

The product trade names in this publication are supplied on the understanding that no preference between equivalent products is intended and that the inclusion of a product name does not imply endorsement by the department over any equivalent product from another manufacturer.

No material matter in this publication may be reproduced, stored in a retrieval system, or transmitted in any form by electronic or mechanical means, photocopying or recording without the written permission of NSW DPI.

Throwing a line in at a new spot always makes for a great fishing adventure, whether it's on a family holiday or just somewhere new close to home. No matter your fishing expertise, NSW boasts a wide range of fish species and great places to catch them, including in our many inland rivers, impoundments and streams to the productive estuaries, lakes, beaches and rocky headlands on the NSW coast. There are also many inshore and offshore fishing opportunities from your boat or if using one of the many experienced charter fishing services available.

There are many reasons to go fishing, including to unwind and relax, spend time with family and friends, enjoy nature and of course to catch a tasty meal of fresh fish. Over a million people in NSW enjoy this fantastic lifestyle and the great news is that you are never too old or young to take up fishing so get out there and give it a go! Getting into fishing is easy. If you don't know where to start, just head into your local tackle store where the friendly staff can provide tips on tackle, bait and techniques plus point you to a safe, convenient spot to throw a line in.

NSW DPI has developed these *Go Fishing* guides as a snapshot of popular NSW fishing locations in both fresh and saltwater to help improve your recreational fishing experiences. For more information on other locations, fish species, size and bag limits and permitted gear not listed in these guides, visit the NSW DPI website or download the **FishSmart App** from the App store on your Android or iPhone.

Overview

Blowering Dam is situated in the lower reaches of the Snowy Mountains and Kosciusko National Park between the townships of Talbingo and Tumut.

The location in which the dam is situated could be the reason as to why it is such a unique fishery. It sits at a low enough altitude to home a strong population of native species, although it still sits high enough to receive the positives of cooler water temps and sparkling snow melt waters that are associated with the alpine trout dams. With such good numbers of natives along with the crystal clear snow melt waters that allow visibility of up to five metres, this dam is capable of producing outstanding sight fishing opportunities for Murray cod and other natives.

Blowering Dam is also known by the locals as "Lake Disappointment" due to the hours it can take to land a fish. In saying this, it's a highly popular location because the results are well worth the effort. This dam is home to some of the largest Murray cod in the country and keen anglers travel long distances to try their luck on these trophy fish. The fish are extremely healthy with majority of the resident cod being very fat for their length due to the abundance of food in the dam.

DPI research indicates that the dam's cod fishery is heavily reliant on stocked fish recruitment, with very little natural fish recruitment.

continued on page 4



*Blowering
Dam*



● Sydney



continued from page 3

This mirrors results at Copeton Dam, in northern NSW, which was also found to have very low natural recruitment levels and a high dependence on fish stocking to sustain the fishery.

As a result, Blowering Dam, like Copeton, has been opened to fishing all year-round, as the annual closure between September-November isn't needed where the population is based almost entirely on stocking.

As well as natives, Blowering supports good trout fishing at times (the surrounding area boasts fantastic trout fishing, with the Tumut River being particularly productive) as well as redfin and carp.



The scenery is another reason to visit this magical lake. It sits in a large valley surrounded by mountain terrain, pine and gum forests with flat grassy camp spots and a perfect climate. There are five good quality reserves along the Snowy Mountains Highway side of the lake. If you prefer to get away from the crowds, you can take a more adventurous route and come in from the western side via Batlow.



Blowering Dam Map

NOTE: This fishing map is only to be used as a general reference overview.

Not for navigation.

See www.rms.nsw.gov.au for info on boating safety and regulations.

Caution: The high altitude and open nature of this location can lead to sudden changes in weather conditions. Telephone 13 12 56 for information.

Caution: Boating on inland waters demands special care. Information on boating in these areas can be found at www.rms.nsw.gov.au.

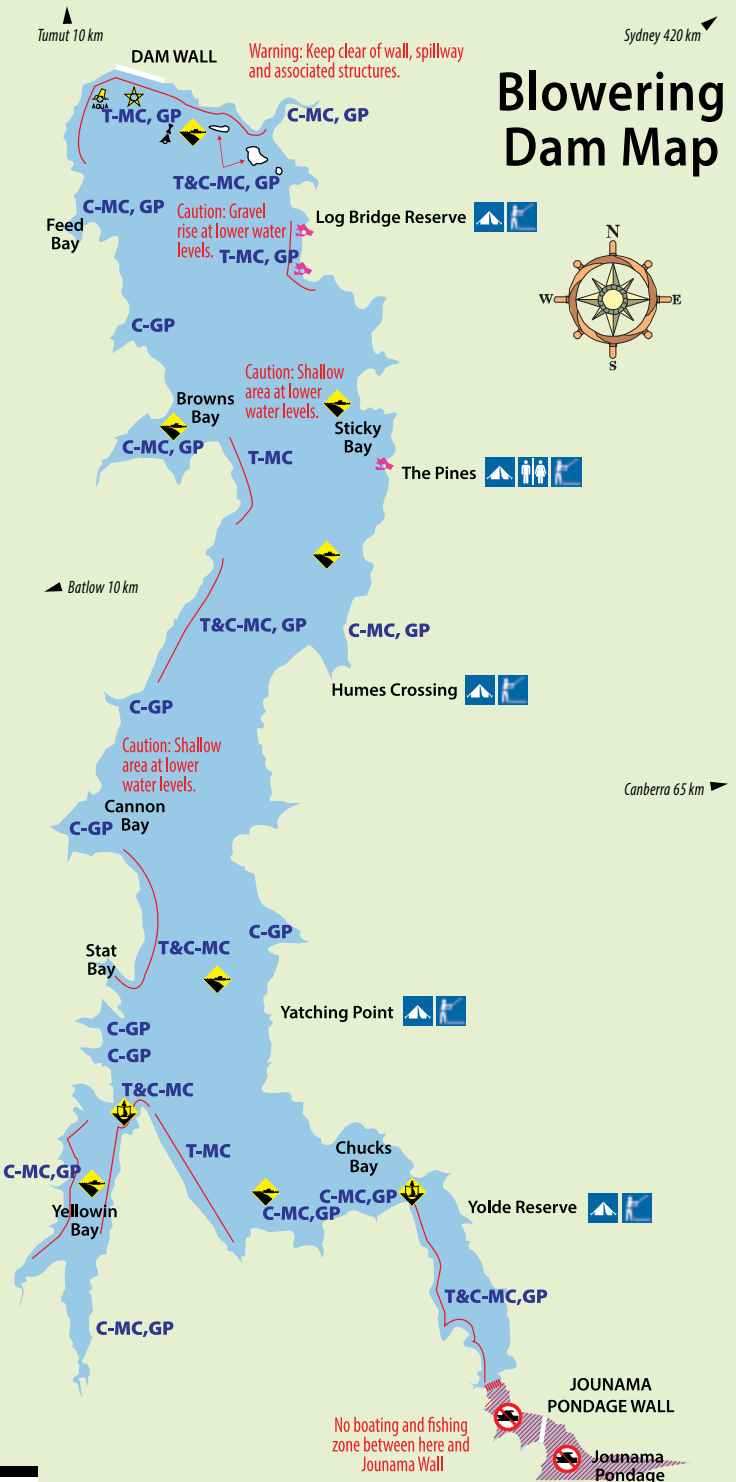
Warning: Beware of submerged rocks, trees and shallow areas, particularly at lower levels.

NSW DPI Fisheries

Report illegal or suspect fishing activities to the local Fisheries Office at 64 Fitzroy St Tumut 2720. Contact phone is 02 6941 1404. You can also call the Fishers Watch Phonenumber on 1800 043 536 or online at www.dpi.nsw.gov.au/fisheries/compliance

Tumut 10 km

Warning: Keep clear of wall, spillway and associated structures.



MC	Murray Cod
GP	Golden Perch
T	Trotting
C	Casting
	Fishing
	Camping
	Toilet
	Launching ramp
	Warning: Overhead power cables
	Caution: Shallow water
	Special mark aqua bouy
	Yellow light beacon
	West cardinal conical buoy
	Productive trolling areas



Key target species

Murray Cod

PEAK SEASON – Blowring is open to fishing for Murray cod all year with spring, autumn and winter being prime times.

TECHNIQUE – Bait fishing with large yabbies and grubs from the bank, especially at night; trolling hard-bodied deep diving lures in the 90–150 mm size range around rocky banks and sunken logs; casting large spinnerbaits and soft plastics (focus on steep rocky banks during summer and shallow grassy areas in the cooler months).

TACKLE – Heavy 6–10 kg baitcaster outfits loaded with 30–50 lb braided mainline with a rod length of 30–50 lb fluorocarbon leader. A large knotless landing net, gloves and heavy duty pliers are important pieces of equipment to have onboard.

HOT SPOTS – Steep rocky banks, back of bays, large snags and logs, shallow banks (during winter).

BAG & SIZE LIMITS – Two per angler per day, slot limit of 55–75cm. Possession limit: 4.



Rocky banks and snags are excellent habitat for native sportfish like Murray cod and golden perch because they offer food and shelter. A rocky bank or snag is always worth a few casts! Fish numbers in Blowering are enhanced by regular stocking of natives and trout. More than 2.5 million native fish and trout fry/fingerlings have been stocked by DPI and angling groups into the lake over the past 15 years.



Golden Perch

PEAK SEASON – September to December.

TECHNIQUE – Casting small lipless crankbaits, soft plastics and hard-bodied lures at standing trees, flooded banks and rocky points; trolling rocky points at a depth contour between 4–7 m with small hard-bodied lures measuring between 50-90mm.



TACKLE – 2–4 kg spin outfits, 2.1m graphite rod, 2500 size spin reel, 8-10lb braided mainline with a rod length of 8-10lb fluorocarbon leader. Small soft plastics with 1/6-1/4 oz jighead and size 1 or 2 hook work well on golden perch.

HOT SPOTS – Rocky points, twiggy trees, dirty water, snags.

BAG & SIZE LIMITS – 5 per angler per day, 30 cm legal length. Possession limit: 10.



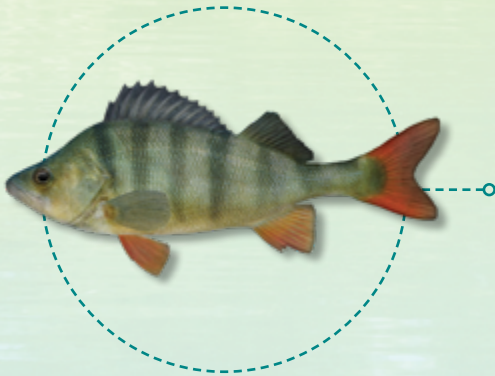
Key target species – cont.



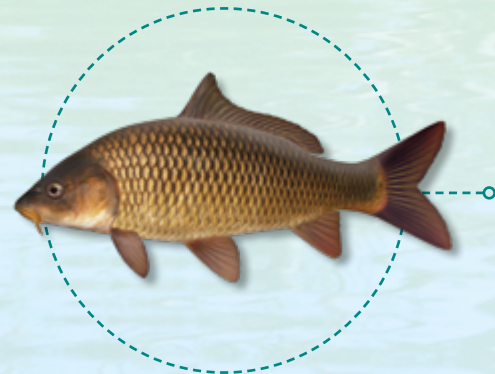
Up until fairly recently, Blowring was best known as being a trout fishery. DPI stocks both **rainbow** and **brown trout** into the dam's cool, clean waters with the cooler months the best time to target these freshwater sportfish.

Trolling or casting small diving hard-bodies or "Tassie Devil" style lures is an effective technique when targeting trout. They also respond to baits such as worms, mudeyes and artificial "Powerbait" style products.

Trout have a minimum size limit of 25 cm in Blowring with a daily bag of five fish and a possession limit of 10.



Introduced **redfin**, which are a Class 1 noxious pest in NSW, are also present in Blowring, sometimes in large numbers. Redfin, aka English perch, are native to northern Europe and were introduced to Australia in the 1860s. It is illegal to be in possession of live redfin in NSW. It is also illegal to use live or dead redfin for bait. There are no bag or size limits on redfin in NSW. Many anglers enjoy catching redfin as they are good sport and a popular table fish. Redfin can be targeted on similar lures to those used for trout.



European carp are also available in Blowring. This introduced species originates from central Asia and can grow to impressive sizes. Carp will sometimes take a lure meant for a cod or yellowbelly but are most commonly caught on baits including worms, shrimps, corn kernels and bread. Carp have spread throughout the Murray-Darling Basin and can cause serious degradation to natural aquatic systems. As with redfin, there are no bag and size restrictions on carp. Anglers are encouraged to humanely dispatch and utilise any carp caught in Blowring.

FACT BOX

NEW TECHNIQUE: WINTER MURRAY COD ON BIG SOFT PLASTICS

In the past few years the technique of casting big soft plastics for Murray cod has really come to life in Blowering Dam. During winter the trout in the dam become active and are actively hunted by Murray cod across the shallow grassy flats.

Large 150–200 mm soft plastics ideally represent the trout and are perfect options for large cod. The best locations include shallow grassy banks and areas where you can see rising trout. Hold your boat well away from the bank in 5–7 m of water and cast towards the bank. Let the lure hit the bottom, lift and then slow roll back to the boat.

June, July and August are the best months for this technique. Make sure you have a heavy rod to help with casting the large lures and to land the big fish. Look for big fish profile plastics and rig them on a 3/4 oz jighead, 7/0 hook and a stinger hook.



FACT BOX

CORRECT HANDLING

The trophy-sized Murray cod that inhabit Blowering Dam are a once-in-a-lifetime capture for most anglers. Looking after these great native sportfish is paramount to ensure their survival.

When landing a Murray cod use a large knotless net. Once the fish is in the net, leave it in the water until you have your brag mat, camera and other equipment ready. Never lay the fish on a hot deck, always wet the brag mat before laying the fish down to measure.

When handling large Murray cod it is recommended to use a glove rather than lip grips as this will allow for a better grip on the fish and minimise any damage to the fish's jaw. Always support the weight of the fish with your second hand. When lifting, always lift the fish parallel; never put any pressure on the vertebrae behind the fish's head.

If your camera is immediately available, take a few quick pictures and hold the fish in the water until it is ready to swim away. Take the photos with the fish in the water or just lift the fish out quickly and then place it back in the water.



HANDY KNOTS

UNI KNOT – This is an excellent knot for connecting hooks and swivels to the end of fishing lines. A very dependable knot. Use more wraps with lighter line, less with heavier line.



1. Thread line through eye.



2. Make this configuration.



3. Begin wrapping loop C with tag A.



4. Continue wrapping four to six times.



5. Moisten the line and form a knot by pulling tag A against loop C.



6. As you continue to pull on the tag all of the spirals in the tag are transferred to the loop D.

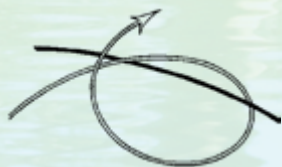


7. This forms a slipping knot and loop.



8. The loop C disappears as the knot slides on to the eye.

DOUBLE UNI KNOT – This is a useful knot for joining two lines.



1. Overlap the lines to be joined then encircle one line with the tag of the other.



2. Wrap the double strand inside the formed loop.



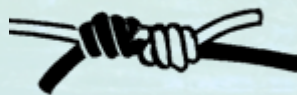
3. Make four wraps in all.



4. Do the same with the other line so the knot in each line is tied around the other.



5. Moisten the line and tighten each knot in turn.



6. Draw the knots together, tighten once more, then trim the tags.

Check out the app: **FishSmart**

NSW DPI has created an app that provides recreational fishers with 24/7 access to essential information they need to know to fish in NSW, such as:

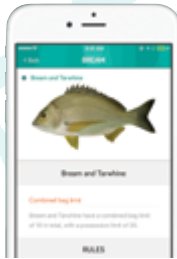
- a pictorial guide of common recreational species, bag & size limits, closed seasons and fishing gear rules
- real-time maps to locate nearest FADs (Fish Aggregation Devices), artificial reefs, Recreational Fishing Havens and Marine Park Zones
- local weather, tide, moon phase and barometric pressure to help choose best time to fish
- guides on spearfishing, fishing safely, trout fishing, regional fishing
- DPI contact for reporting illegal fishing, fish kills, pest species etc. and local Fisheries Offices
- DPI Facebook news.



Search for a fish, weather info and gallery



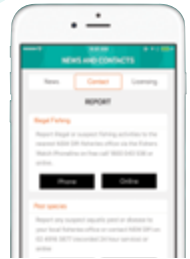
See your location in relation to FADs, Marine Park Zones, RFHs & more



Check the bag and size limits for popular species



Check the rules for different gear types



Contact Fisheries – Report illegal fishing & more