

DPI Primefact

Preventing the spread of abalone disease

September 2023, Primefact 1146, Second edition
DPI Aquatic Biosecurity, Animal Biosecurity, Biosecurity and Food Safety

What is abalone disease?



Figure 1 Diseased greenlip abalone displaying symptom of AVG – curling of the foot (Photos: DPI Victoria)

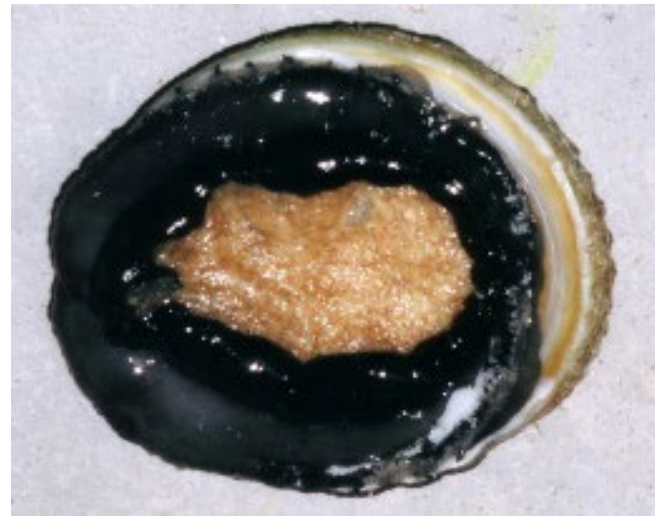


Figure 2 Diseased blacklip abalone displaying symptom of AVG – curling of the foot (Photos: DPI Victoria)

Abalone viral ganglioneuritis or AVG is a disease caused by a virus which affects the nervous system of abalone.

Symptoms can include curling of the foot, swelling of the mouth, weakness, and death of abalone.

AVG affects blacklip (*Haliotis rubra*) and greenlip abalone (*H. laevisgata*) and hybrids of these two species.

There is no evidence that AVG has any effect on human health.

Where does it occur?

AVG occurs in Tasmania and has caused significant mortality in farmed and wild abalone in parts of Victoria.

AVG is not known to occur in wild abalone stocks in NSW.

Figure 3: Presence of HaHV-1 by jurisdiction (Source: DAWE, <https://www.agriculture.gov.au/sites/default/files/documents/abalone-viral-ganglioneuritis.pdf>)



Steps to help protect the NSW abalone industry

Follow these steps to protect your business and to help stop live abalone spreading AVG:

- Wash hands and/or gloves thoroughly with warm soapy water after handling abalone.
- Dispose of all waste into a covered bin which goes to landfill.
- Dispose of water from holding tanks into the sewerage system.
- Thoroughly clean equipment used for holding and transport of abalone with a detergent and warm water, rinse in fresh water and allow to dry.
- Wipe areas of any transport vehicle and its containers/bins which came into contact with abalone with dilute detergent or disinfectant.
- If you suspect AVG in your tanks NSW DPI can assist you.

If you observe sick or dying abalone, contact the 24-hour Emergency Animal Disease Hotline on **1800 675 888** for advice.

For more information on abalone disease visit: www.dpi.nsw.gov.au/avg

© State of New South Wales through Regional NSW 2023. The information contained in this publication is based on knowledge and understanding at the time of writing September 2023. However, because of advances in knowledge, users are reminded of the need to ensure that the information upon which they rely is up to date and to check the currency of the information with the appropriate officer of the Regional NSW or the user's independent adviser.