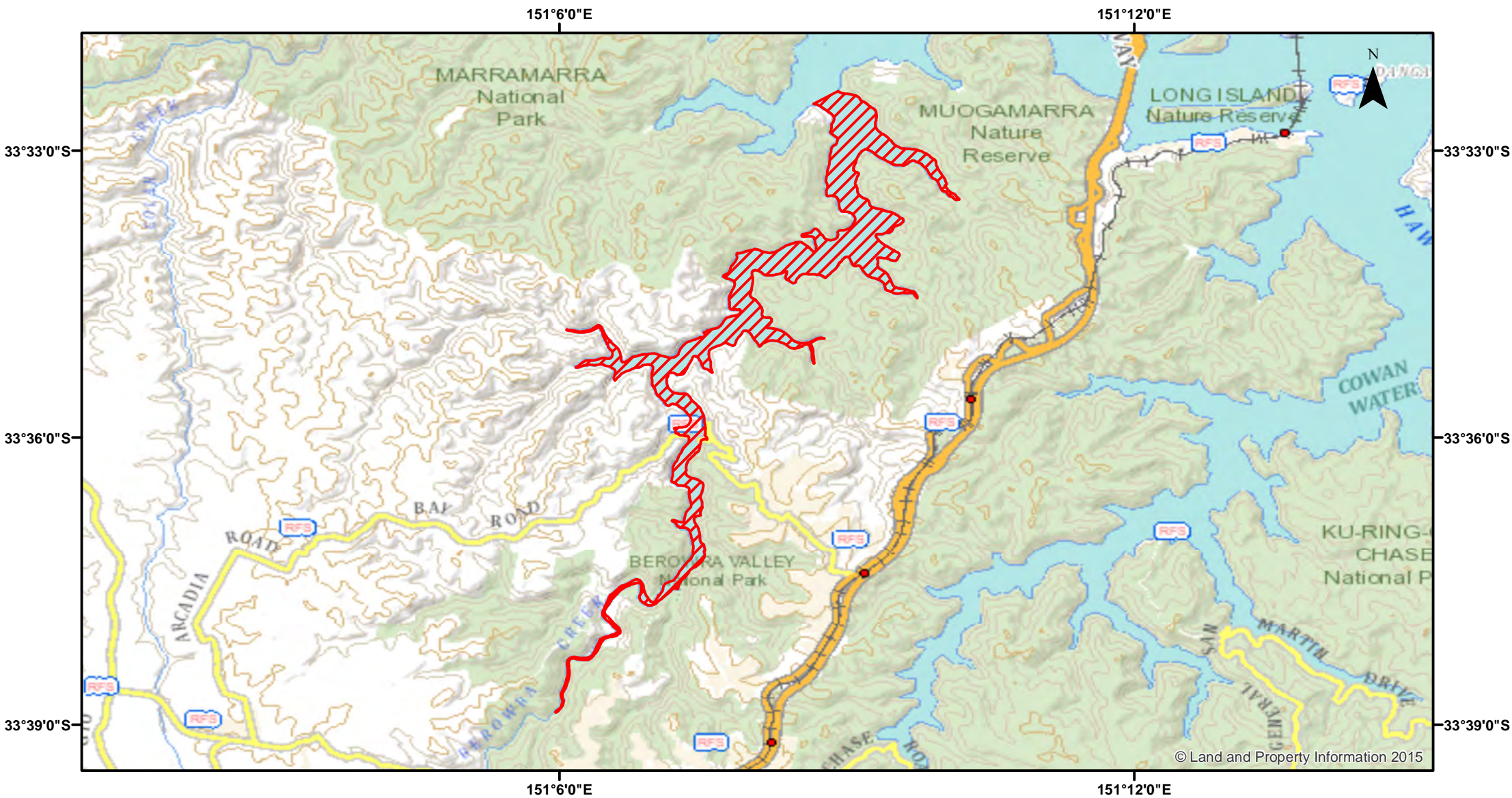


# Estuary Prawn Trawl - Berowra Creek

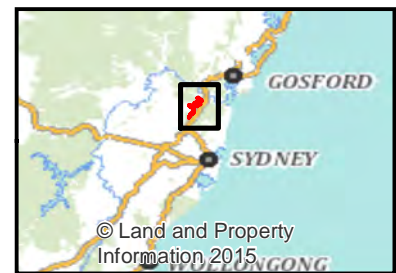
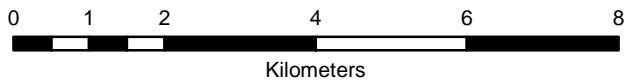


Closure

NSW DPI 20 December 2017  
Coordinates are shown in WGS84

Notice to Map Users  
Additional closures may apply. Primary Industries and its employees disclaim all liability for any actions or consequences arising from the use of this information. This map is not to be used for navigational purposes as it is indicative only and not guaranteed to be free of error or omission.

**Closed Waters**  
The whole of the waters of Berowra Creek upstream of a line from the most south westerly point of Morgan Point to the north eastern point of Coba Point.



© Land and Property Information 2015