

# Spearfishing - Bonville Creek

153°0'0"E

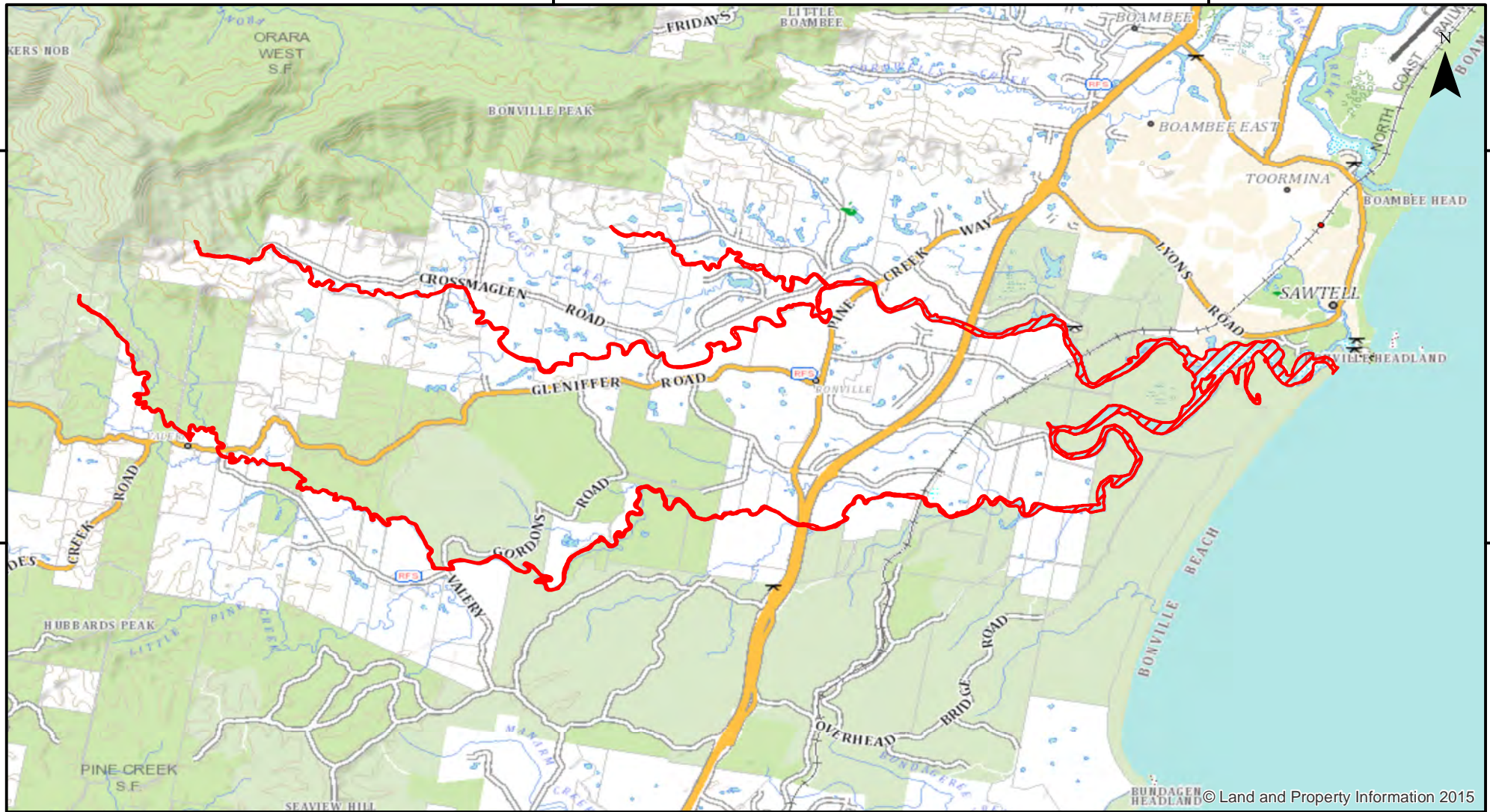
153°5'0"E

30°21'0"S

30°21'0"S

30°24'0"S

30°24'0"S



BUNDAGEN HEADLAND © Land and Property Information 2015

153°0'0"E

153°5'0"E

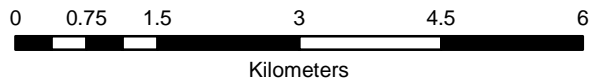


Closure

NSW DPI 21 March 2018  
Coordinates are shown in WGS84

Notice to Map Users  
Additional closures may apply. Primary Industries and its employees disclaim all liability for any actions or consequences arising from the use of this information. This map is not to be used for navigational purposes as it is indicative only and not guaranteed to be free of error or omission.

**Closed Waters**  
The whole of the waters of Bonville Creek, together with all its tributaries extending from the South Pacific Ocean upwards to its source.



© Land and Property Information, 2015