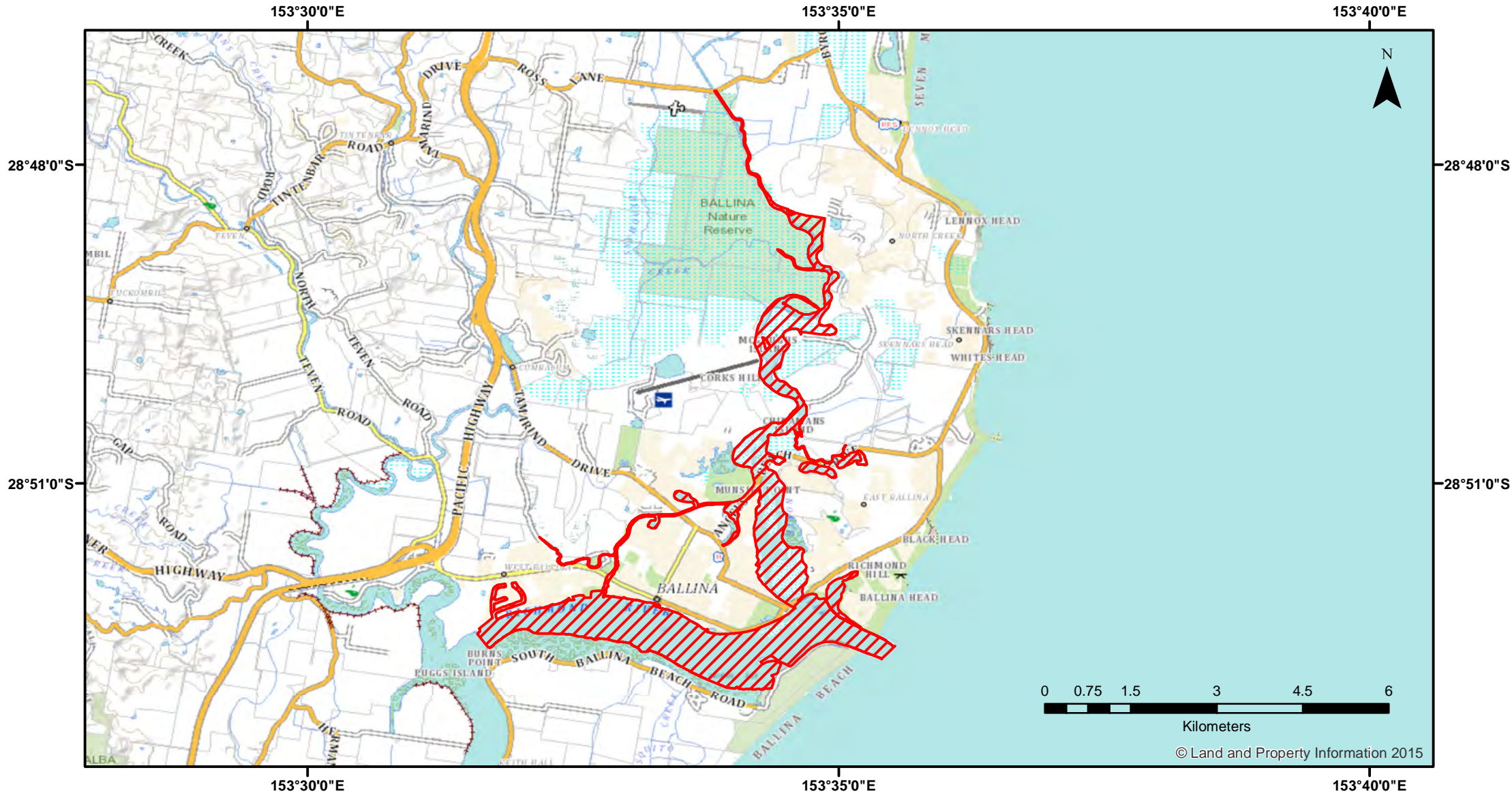


Richmond River (Lower Reaches)



Closure

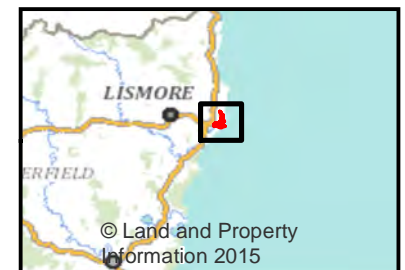
NSW DPI 13 April 2018

Coordinates are shown in WGS84

Notice to Map Users
 Additional closures may apply. Primary Industries and its employees disclaim all liability for any actions or consequences arising from the use of this information. This map is not to be used for navigational purposes as it is indicative only and not guaranteed to be free of error or omission.

Closed Waters
 The whole of the waters of Richmond River and its tributaries, from a line drawn between the eastern extremities of the northern and southern breakwaters, upstream to the Burns Point ferry crossing.

Prohibited Method
 Trap, other than a bait trap.



© Land and Property Information 2015