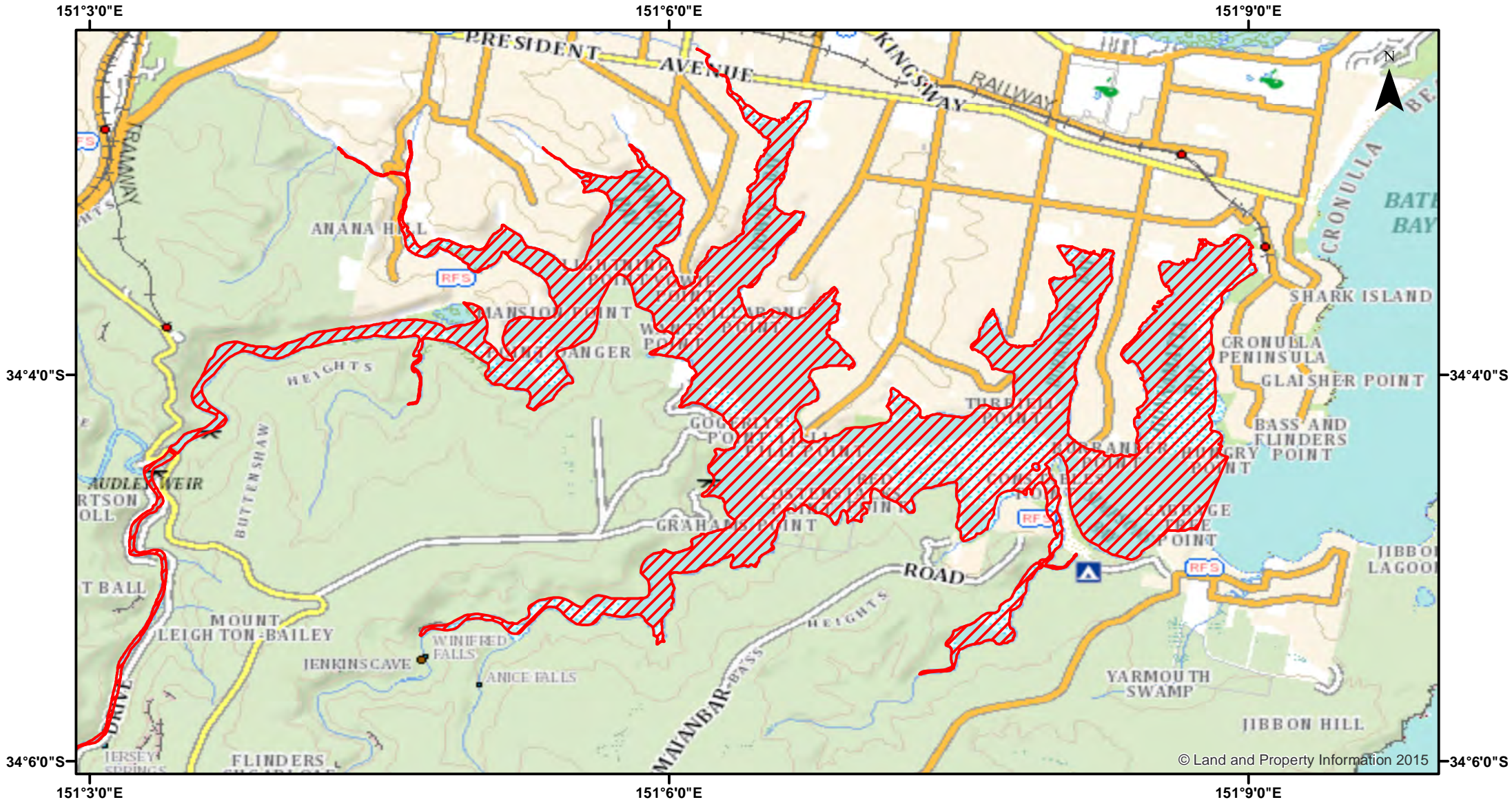


Port Hacking - Nets and Traps



© Land and Property Information 2015



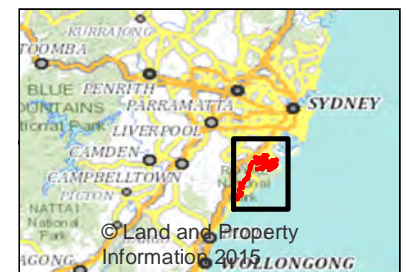
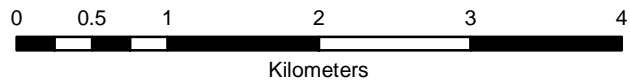
Closure

NSW DPI 25 May 2018
Coordinates are shown in WGS84

Notice to Map Users
Additional closures may apply. Primary Industries and its employees disclaim all liability for any actions or consequences arising from the use of this information. This map is not to be used for navigational purposes as it is indicative only and not guaranteed to be free of error or omission.

Closed Waters
The whole of the waters of Port Hacking and its tributaries, upstream of a line drawn southerly from the southernmost extremity of Hungry Point to the northernmost extremity of Cabbage Tree or Pulpit Point.

Prohibited Method
Hoop or Lift nets, a Hand-Hauled Prawn net, a Crab Trap, a Lobster Trap or a Push or Scissors net (prawns).



© Land and Property Information 2015