

# Lane Cove River (Boatshed to Fern Valley)

151°8'30"E

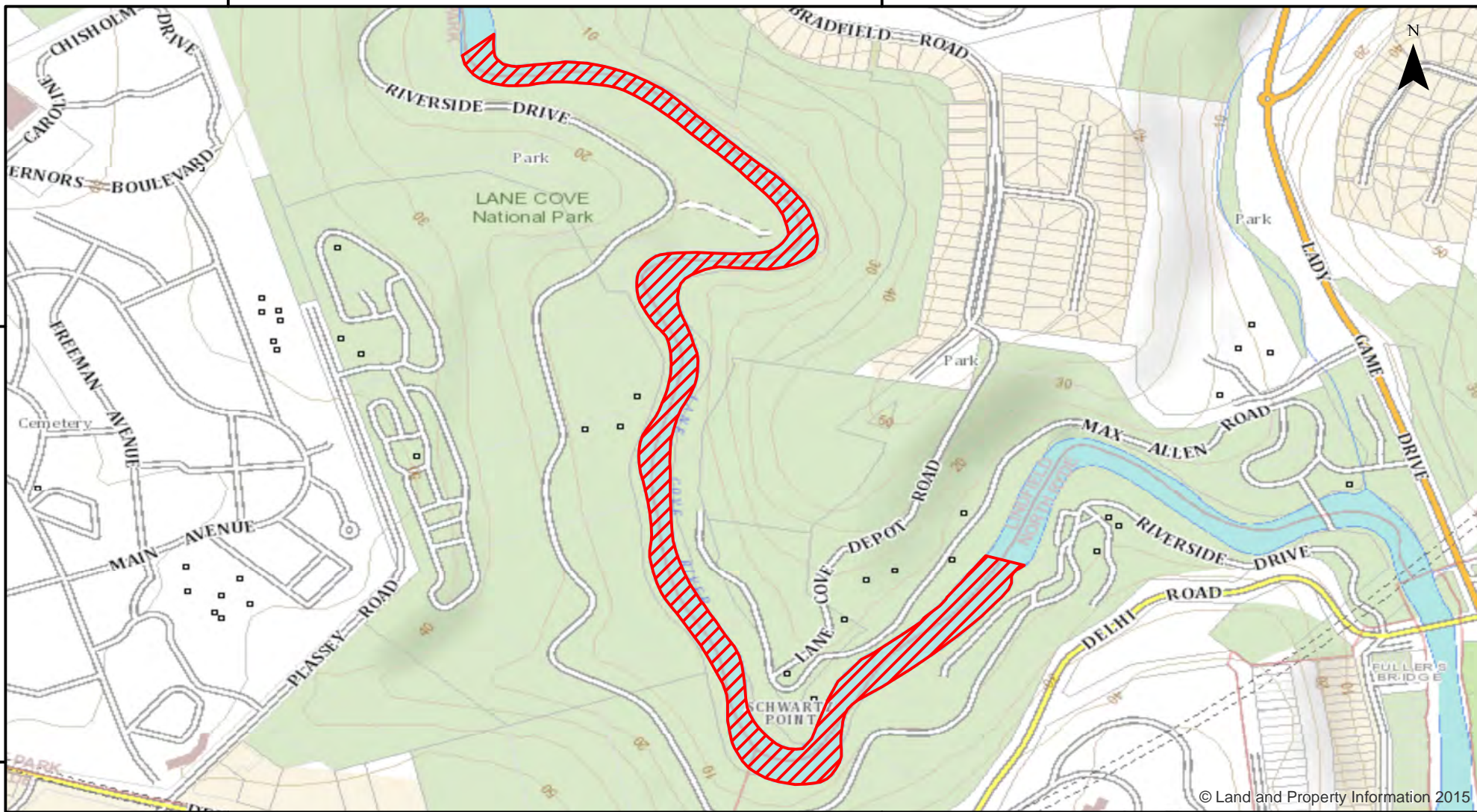
151°9'0"E

33°47'20"S

33°47'20"S

33°47'40"S

33°47'40"S



151°8'30"E

151°9'0"E



Closure

NSW DPI 2 May 2018

Coordinates are shown in WGS84

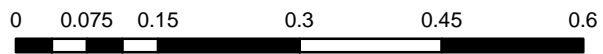
Notice to Map Users  
Additional closures may apply. Primary Industries and its employees disclaim all liability for any actions or consequences arising from the use of this information. This map is not to be used for navigational purposes as it is indicative only and not guaranteed to be free of error or omission.

### Closed Waters

The whole of the waters of Lane Cove River from a line drawn from a post at the boatshed to a post on the opposite bank upstream to a line drawn across the river between two posts on opposite sides of the river, at picnic area number 20 (Fern Valley).

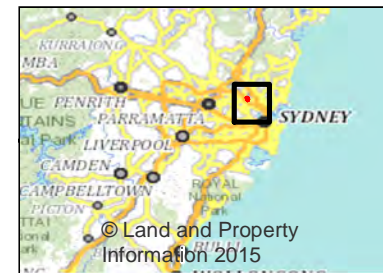
### Prohibited Method

Any method, other than a landing net (but only if the fish caught are released alive), the use of up to two hand held lines with fly or lure attached from an unpowered vessel (but only if the fish caught are released alive).



Kilometers

© Land and Property Information 2015



© Land and Property Information 2015