

CURVED ROOF FISH CLEANING TABLE - DISABLED ACCESSIBLE

DEPARTMENT OF PRIMARY INDUSTRIES

DRAWING LIST

- 101: Drawing List and Information
- 102: Two Person Curved Roof
- 103: Four Person Curved Roof
- 104: Eight Person Curved Roof
- 105: Curved Roof Sections and Detail
- 106: Notes

INFORMATION

The fish cleaning facility offers considerable flexibility in its size and design to cater to a variety of user requirements and settings. The following information sets out key considerations to assist with their selection and placement.

TABLE SIZE

The standard sizing of the tables covers eight, four and two people settings. The choice of size will depend on the frequency of use by anglers at a particular site as suggested below:

- Eight people setting to be used in high use areas such as:
- Fishing clubs with a large patronage;
 - Purpose-built boating facilities with launching ramps and large car and trailer parking facilities;
 - Locations where angling competitions are held; and
 - Locations where existing facilities are inadequate resulting in the inappropriate use of other recreational facilities.

- Four people setting to be used in medium use areas such as:
- Fishing clubs with a medium patronage;
 - Multi-purpose recreational areas that incorporate boat launching ramps and shared car and trailer parking facilities; and
 - Locations which are popular with recreational anglers.

- Two people setting to be used in areas such as:
- Boat launching ramps with basic car and trailer parking facilities; and
 - Locations with medium use by recreational anglers.

ROOF STYLE

Roof designs are available in pitched, curved or skillion profiles. These are provided to accommodate particular design preferences or to ensure the selection of a design style that will complement facilities at an existing setting.

ROOF COLOUR

- Roofs may be finished in a variety of colours to suit design preferences or to match the colour range of existing facilities. To ensure optimal visual integration with a new, natural setting, however, we recommend that the roof colours be selected from a limited palette of subtle, neutral pastels. Several appropriate colours from the *Colourbond Ultra* range include:
- Surfmist
 - Dune
 - Windspray

PLACEMENT

We recommend the following design considerations in the placement of new fish cleaning facilities:

- Ensure easy vehicle access for cleaning, maintenance and waste removal;
- Select a visibly prominent location to minimise vandalism;
- Locate the facility as close as possible to the angling activity, boat ramp or car and trailer parking to optimise use;
- Avoid blocking or impacting on water views from surrounding areas; and
- Avoid conflict with other recreational users.
- Table should be located with access to pressurised water

ADDITIONAL NOTES

- Always check with your local authority's policies and requirements relating to:
 - External structures
 - Drainage and disposal of waste
- Fittings and components should be inspected for wear and corrosion on an annual basis. Any damage to protective coatings should be noted for immediate repair.

Rev.	Description	Date	Des.	App.	Chk.
A	Addition of table top and minor amendments to sections	11/06/15	RE	RE	TIM

© GeoLINK 2012

This drawing must not be relied upon for any purpose other than that for which it was prepared or by any person or corporation other than the referred client.

GeoLINK

Environmental management and design

Level 1, 64 Balaclava Street
PO Box 119
LENNOX HEAD NSW 2476
T 02 6687 7666
F 02 6687 7782
Info@geolink.net.au

23 Gordon Street
PO Box 1446
COFFS HARBOUR NSW 2450
T 02 6651 7666
F 02 6651 7733

quality solutions sustainable future



New South Wales
Recreational
Fishing Trusts

NSW Department of Primary Industries

Fish Cleaning Table

Client

Designed
Approved
XREFs

RE


Drawn
Date

RE
Oct 2012

Checked


Scale

metres



Fish Cleaning Table

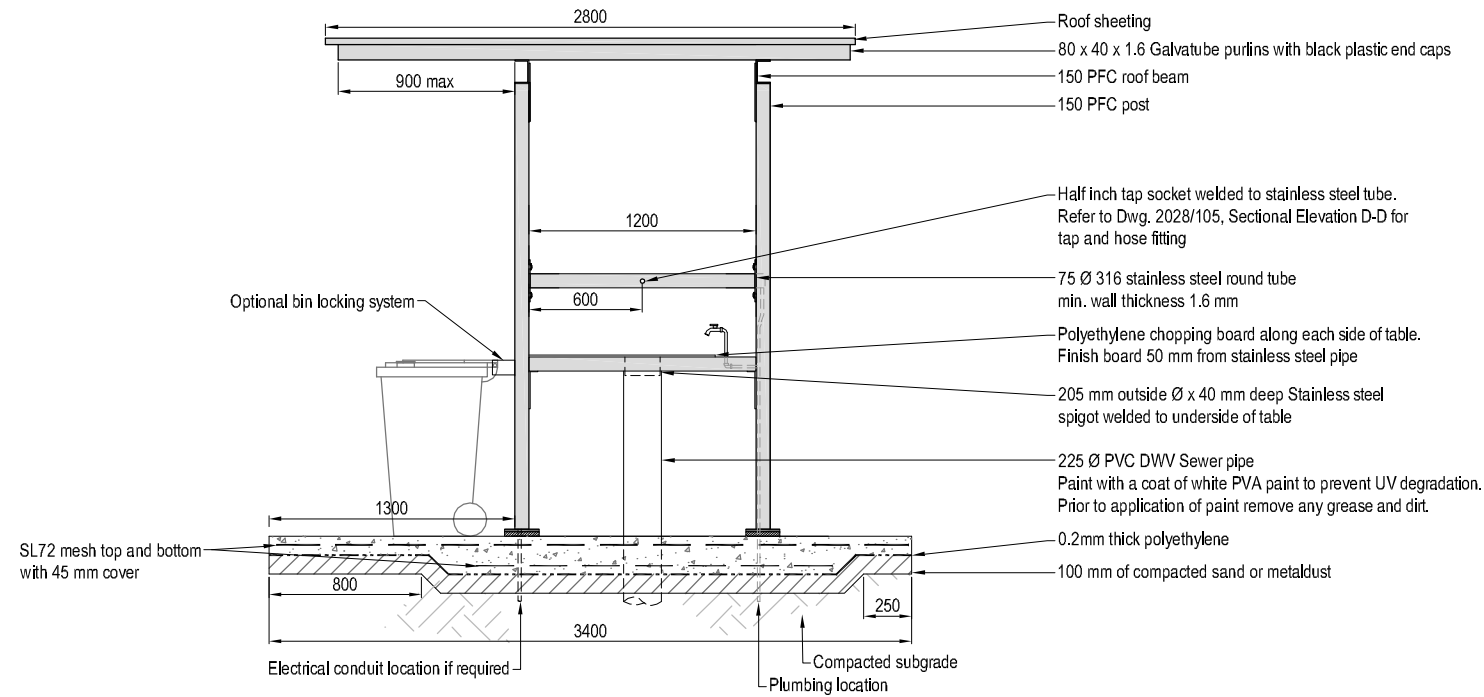
Drawing List and Information

2028-1003

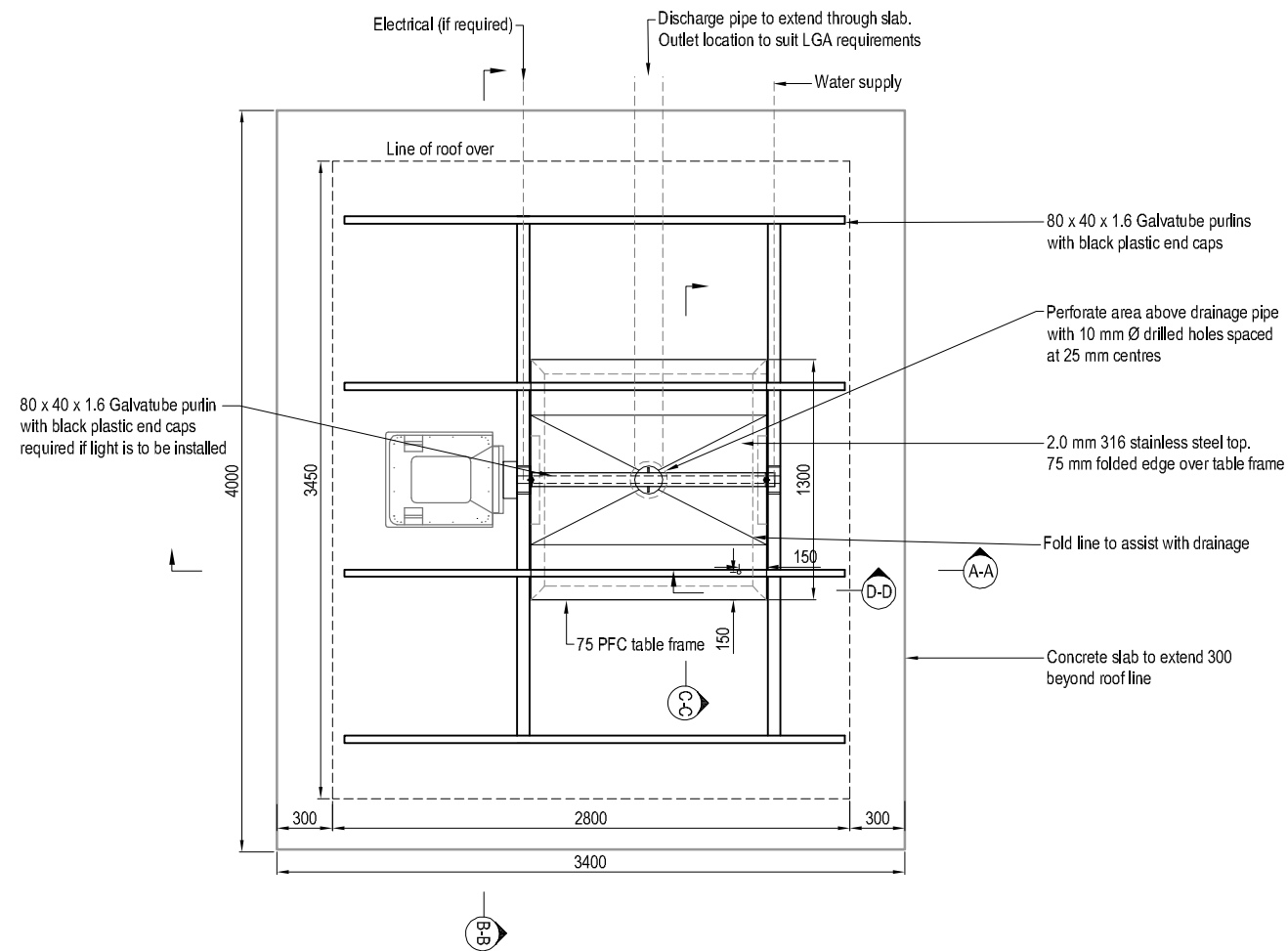
2028/101

A

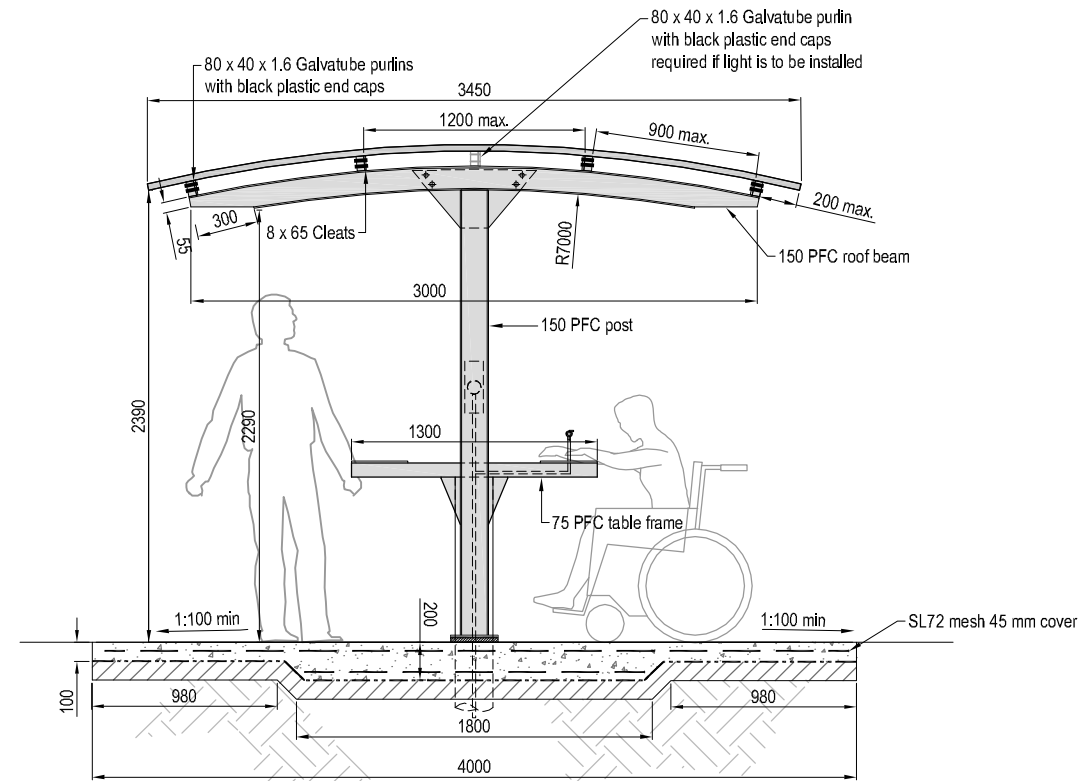
NOTE
Do not scale off drawings. Use figure dimensions only. Check all dimensions on site.



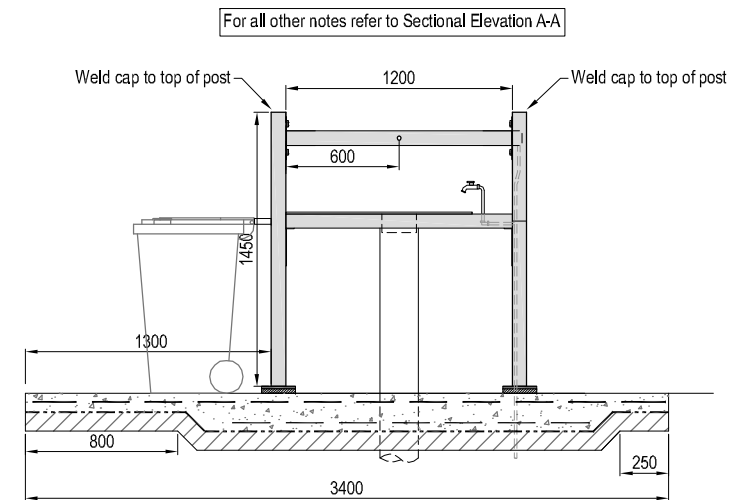
SECTIONAL ELEVATION A-A



PLAN



SECTIONAL ELEVATION B-B



**NO ROOF OPTION
SECTIONAL ELEVATION A-A**

Rev.	Description	Date	Des.	App.	Chk.
A	Addition of table top and minor amendments to sections	11/06/15	RE	RE	TIM

© GeoLINK 2012
This drawing must not be relied upon for any purpose other than that for which it was prepared or by any person or corporation other than the referred client.

GeoLINK
Environmental management and design
www.geolink.net.au

Level 1, 64 Balaclava Street
PO Box 119
LENNON HEAD NSW 2478
T 02 6687 7666
F 02 6687 7782
Info@geolink.net.au

23 Gordon Street
PO Box 1446
COFFS HARBOUR NSW 2450
T 02 6651 7666
F 02 6651 7733

quality solutions sustainable future

**New South Wales
Recreational
Fishing Trusts**

Fish Cleaning Table

Client
NSW Department of Primary Industries

Designed	RE	Drawn	RE	Checked
Approved	<i>[Signature]</i>	Date	Oct 2012	<i>[Signature]</i>

XREFs

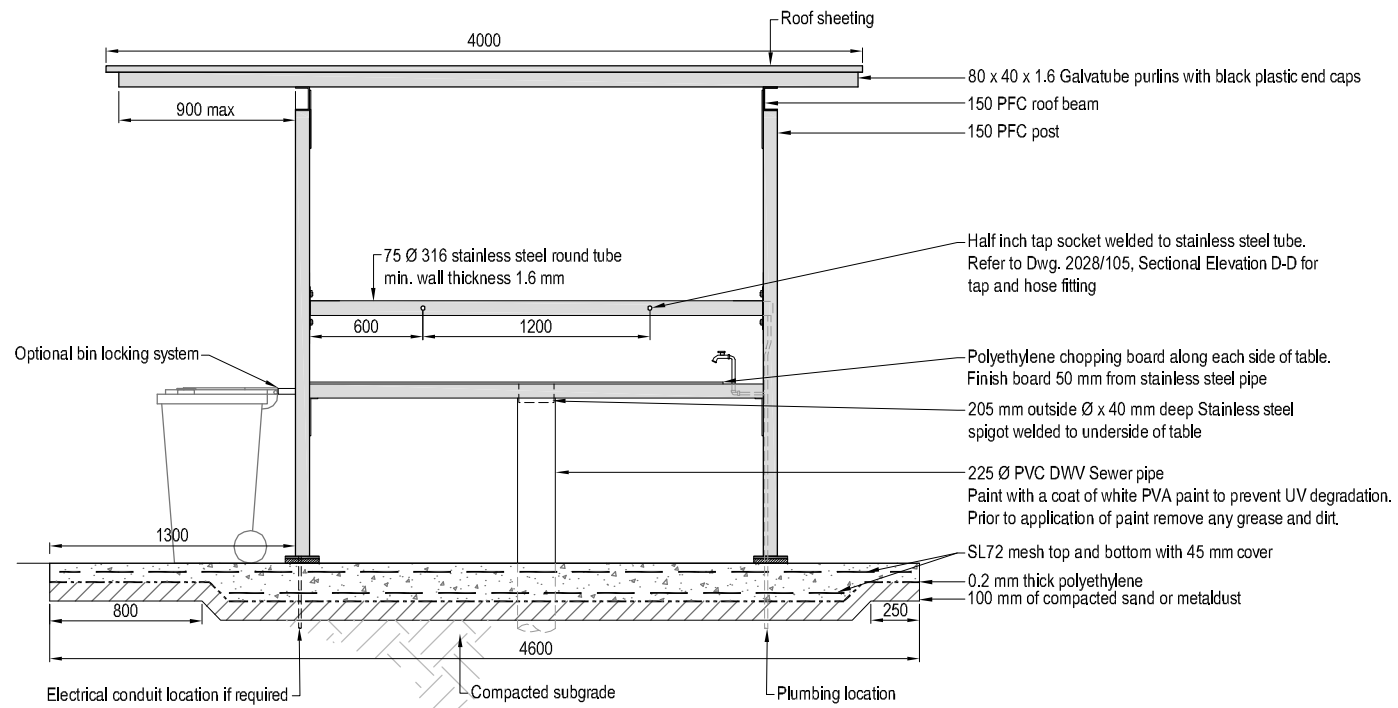
Scale
metres 0 0.20 0.40 0.60 0.80 1.00

Drawing Title
**Fish Cleaning Table
Two Person Curved Roof**

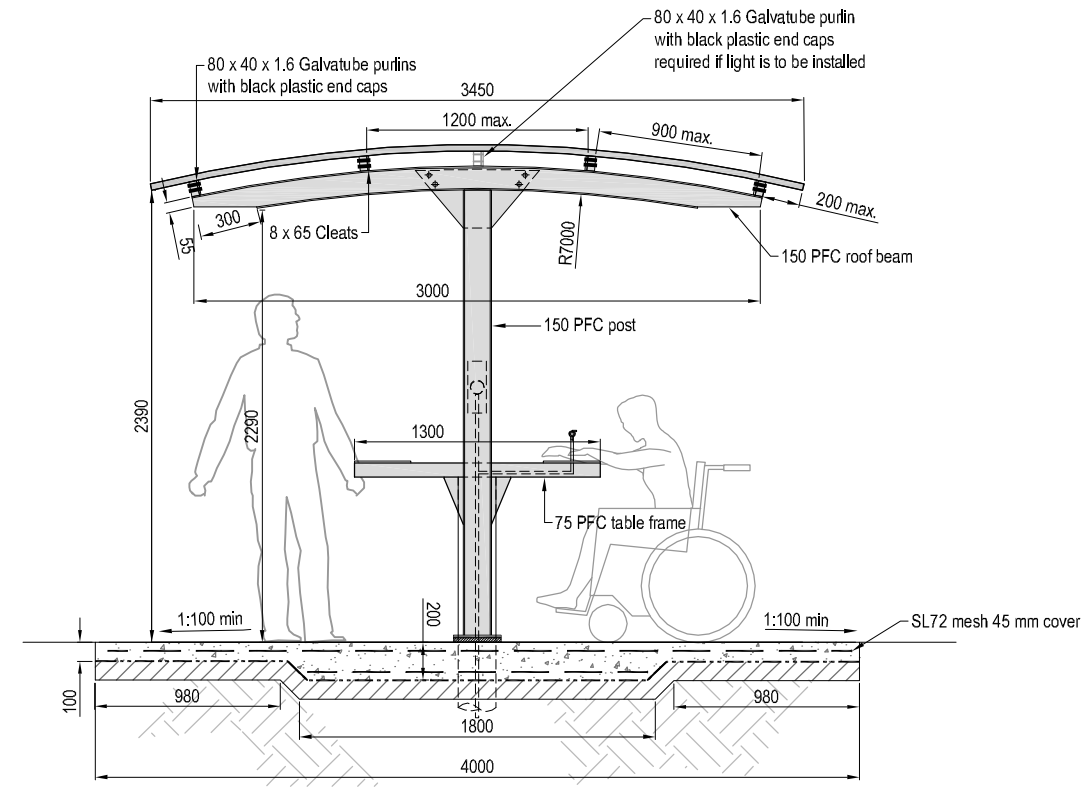
Drawing Number
2028/102

Revision
A

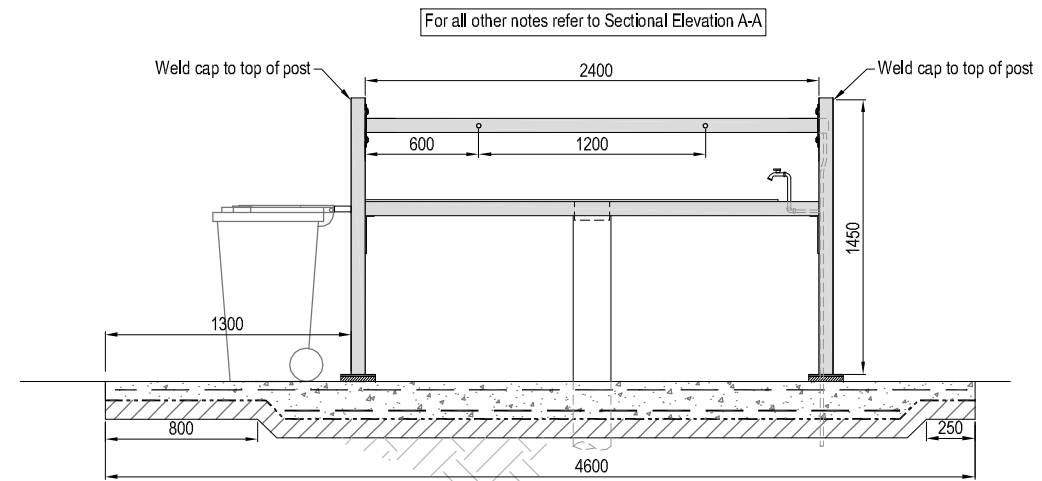
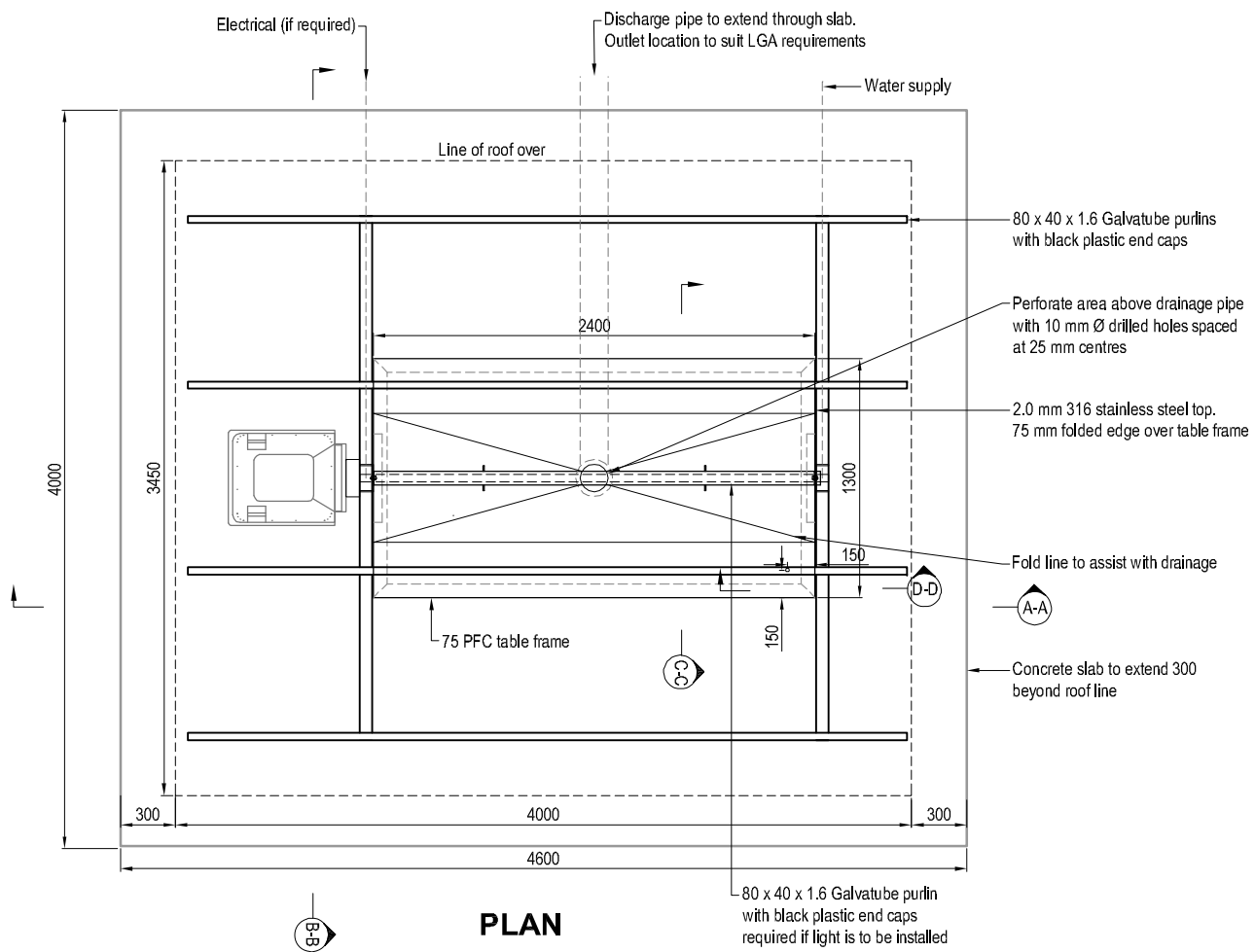
NOTE
Do not scale off drawings. Use figure dimensions only. Check all dimensions on site.



SECTIONAL ELEVATION A-A



SECTIONAL ELEVATION B-B



**NO ROOF OPTION
SECTIONAL ELEVATION A-A**

A	Addition of table top tap and minor amendments to sections	11/06/15	RE	RE	TIM
Rev.	Description	Date	Des.	App.	Chk.

Amendments

© GeoLINK 2012

This drawing must not be relied upon for any purpose other than that for which it was prepared or by any person or corporation other than the referred client.

GeoLINK
environmental management and design

Level 1, 64 Balmain Street
Box 119
WINOX HEAD NSW 2478
2 6687 7666
2 6687 7782
@geolink.net.au

Gordon Street
Box 1446
FFS HARBOUR NSW 2450
2 6651 7666
2 6651 7733

quality solutions sustainable future





New South Wales
Recreational
Fishing Trusts

Project Title
Fish Cleaning Table

Client

NSW Department of Primary Industries

Designed	RF	Drawn	RF	Checked	
----------	----	-------	----	---------	--

Approved	RE	RE	
			
Date			

 VDES-	Oct 2012 7
------------------------------------------------------------------------------------------------	---------------

XREFs

Scale

metres 0 0.20 0.40 0.60 0.80 1.00

Drawing Title

Fish Cleaning Table

Four Person Curved Roof

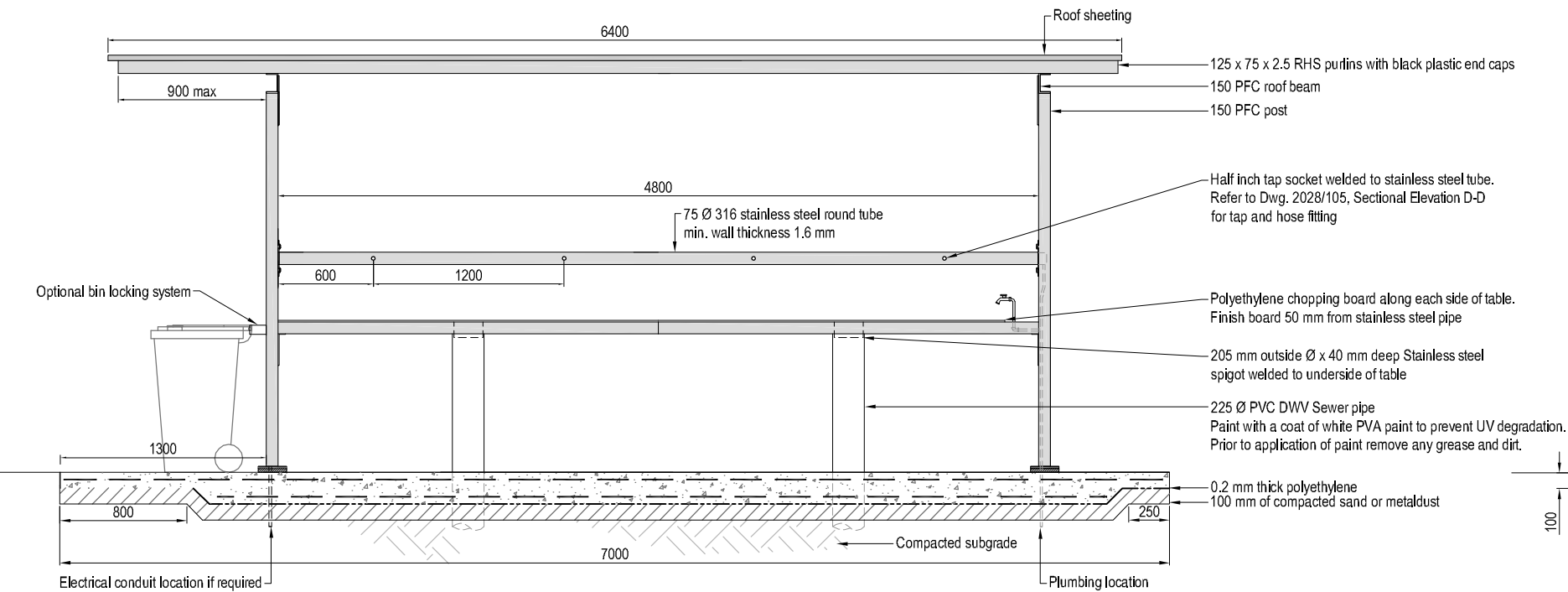
2028-1003

..... Drawing Number Revision

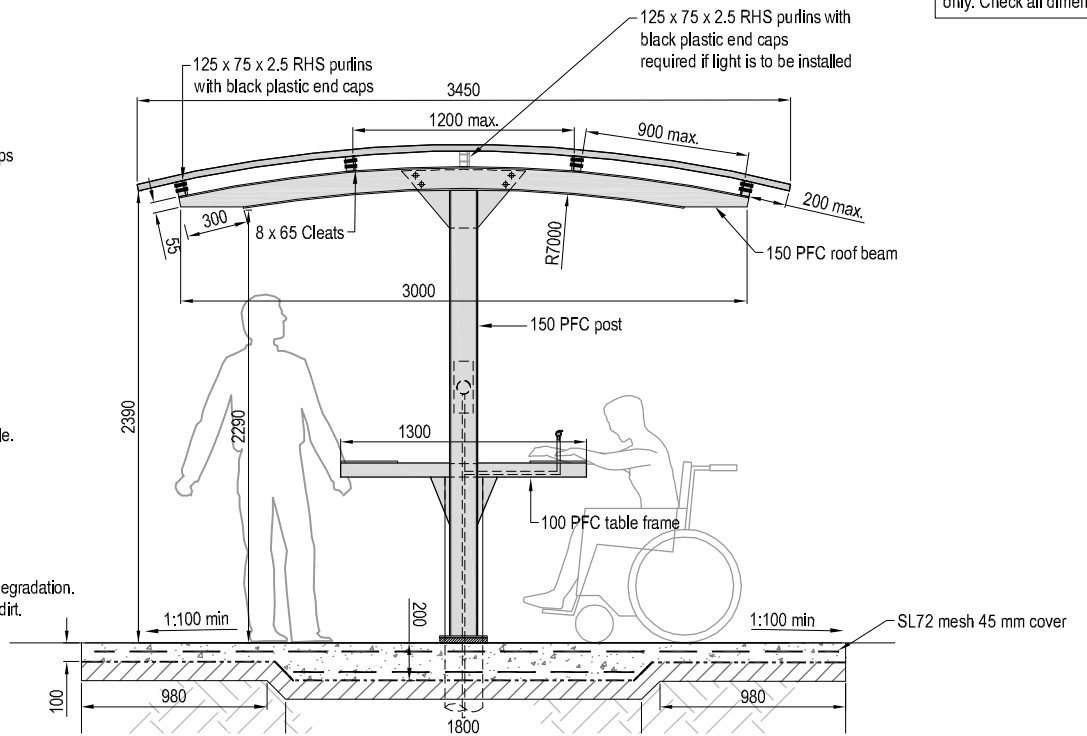
2028/103

2026/103 A

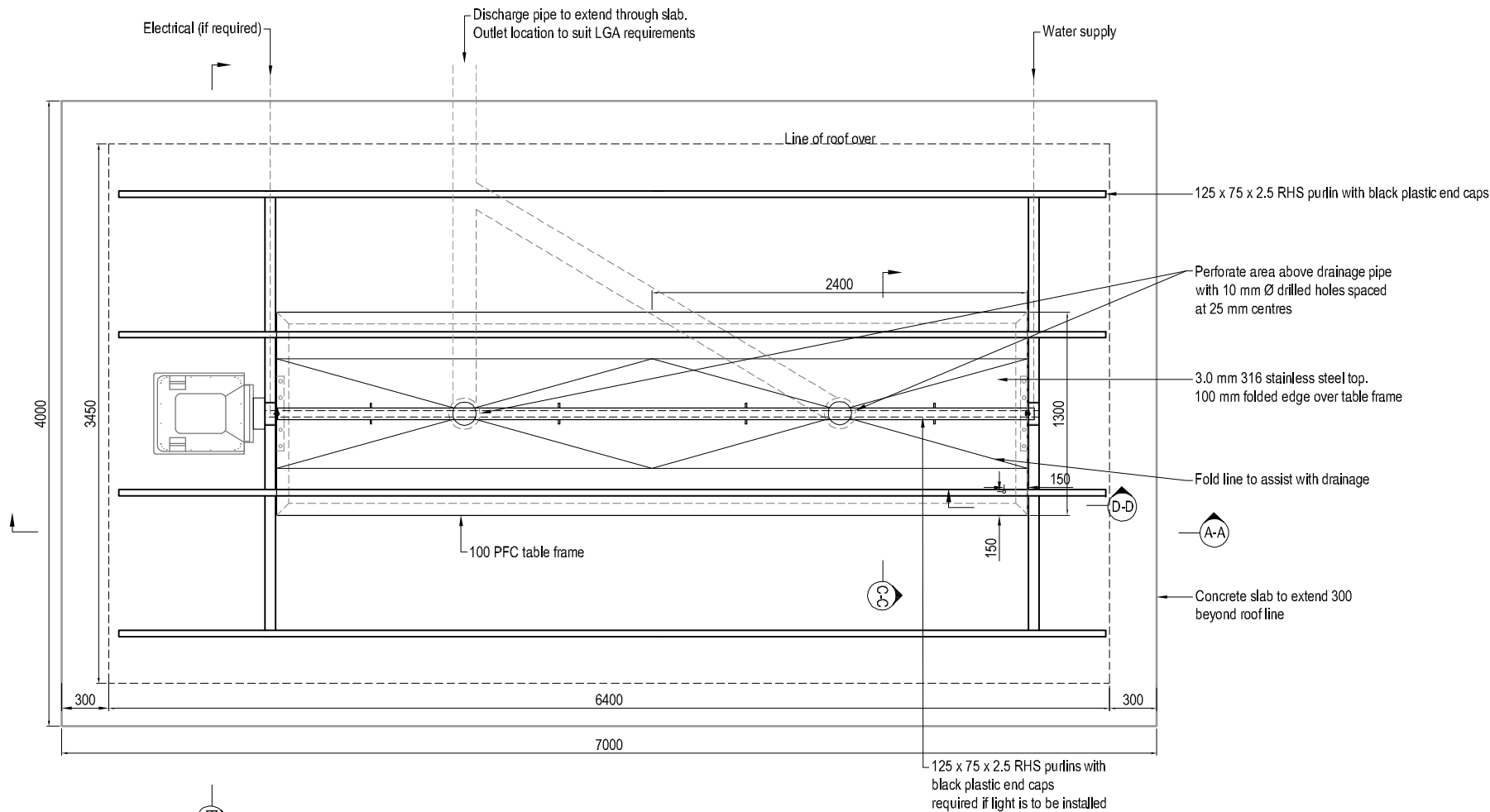
NOTE
Do not scale off drawings. Use figure dimensions only. Check all dimensions on site.



SECTIONAL ELEVATION A-A



SECTIONAL ELEVATION B-B



PLAN

Rev.	Description	Date	Des.	App.	Chk.
A	Addition of table top and minor amendments to sections	11/06/15	RE	RE	TIM

© GeoLINK 2012

This drawing must not be relied upon for any purpose other than that for which it was prepared or by any person or corporation other than the referred client.



Level 1, 64 Ballina Street
PO Box 119
LENNOX HEAD NSW 2478
T 02 6687 7666
F 02 6687 7782
Info@geolink.net.au

23 Gordon Street
PO Box 1446
COFFS HARBOUR NSW 2450
T 02 6651 7666
F 02 6651 7733

quality solutions sustainable future

Project Title		
Fish Cleaning Table		
Client		
NSW Department of Primary Industries		
Designed	Drawn	Checked
RE	RE	P
Approved	Date	Oct 2012
XREFs		
Scale		
metres 0 0.20 0.40 0.60 0.80 1.00		

Drawing Title

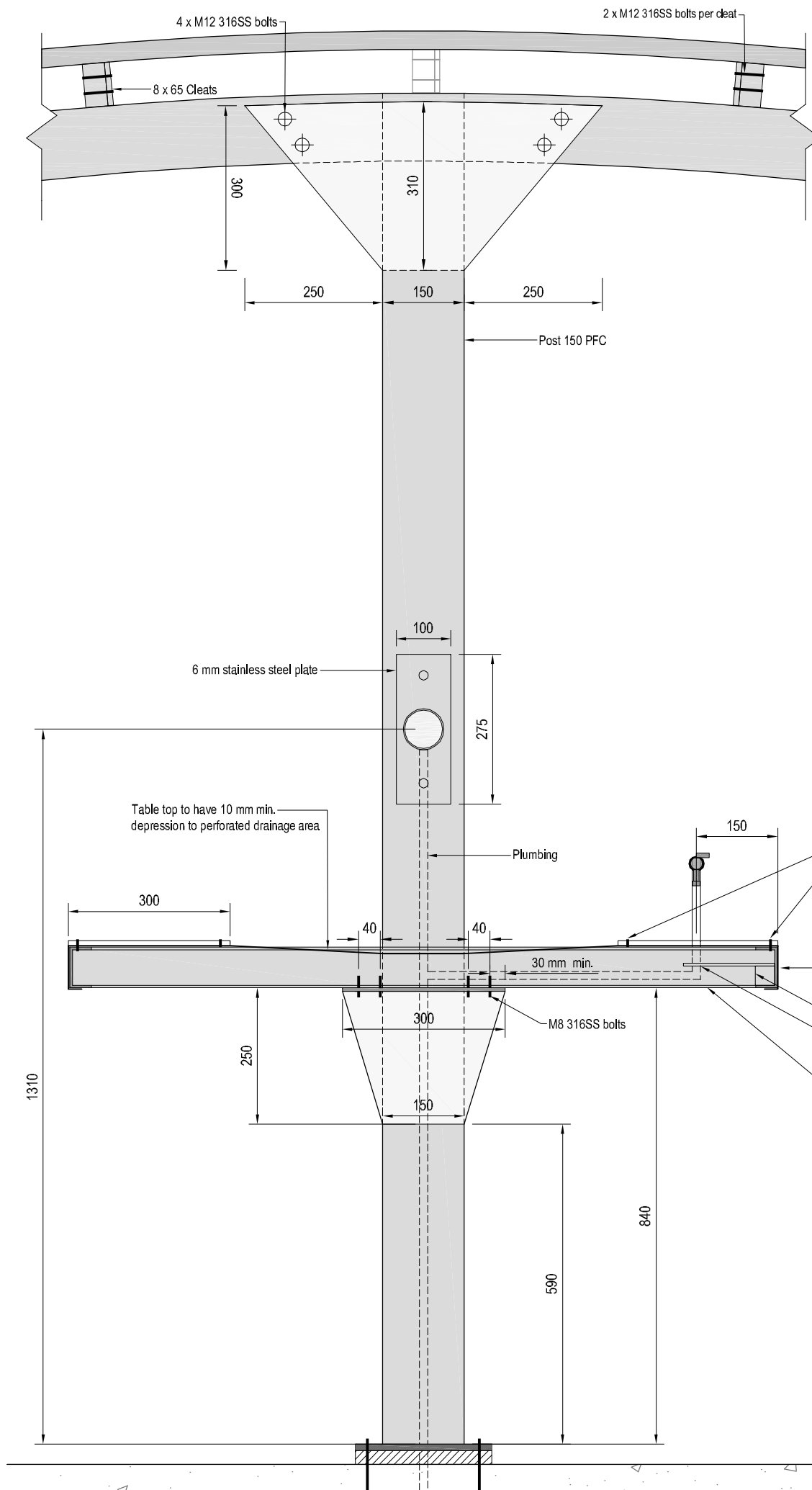
Fish Cleaning Table
Eight Person Curved Roof

Drawing Number

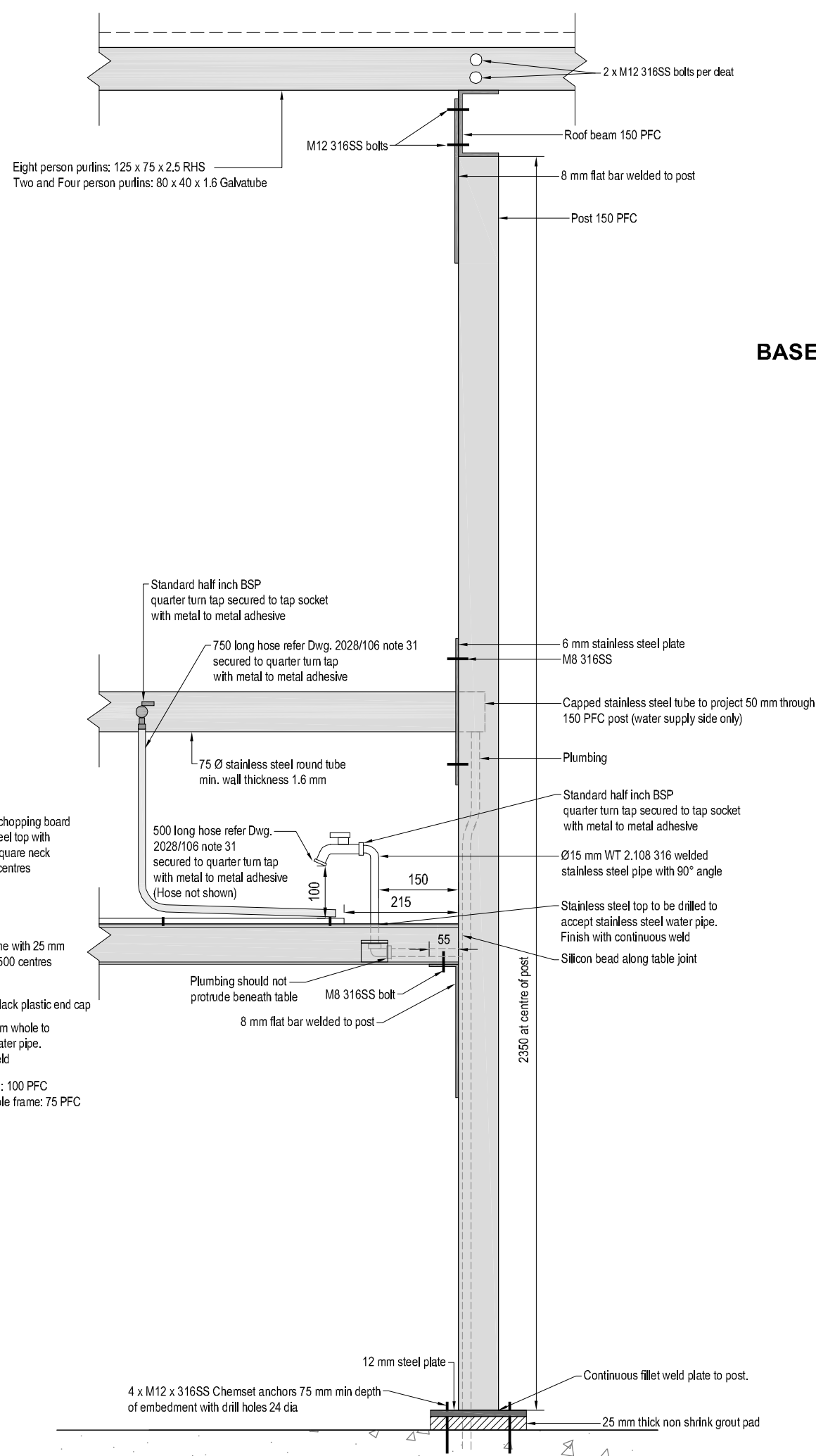
2028/104

Revision

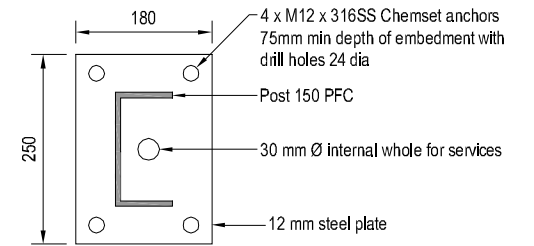
A



SECTIONAL ELEVATION C-C



SECTIONAL ELEVATION D-D



BASE CONNECTION DETAIL

NOTE
Do not scale off drawings. Use figure dimensions only. Check all dimensions on site.

Rev.	Description	Date	Des.	App.	Chk.
A	Addition of table top tap and minor amendments to sections	11/06/15	RE	RE	TIM

© GeoLINK 2012

This drawing must not be relied upon for any purpose other than that for which it was prepared or by any person or corporation other than the referred client.

GeoLINK
Environmental management and design

Level 1, 64 Balaclava Street
PO Box 119
LENNON HEAD NSW 2476
T 02 6687 7666
F 02 6687 7782
Info@geolink.net.au

23 Gordon Street
PO Box 1446
COFFS HARBOUR NSW 2450
T 02 6651 7666
F 02 6651 7733

www.geolink.net.au

quality solutions sustainable future

New South Wales Recreational Fishing Trusts

Fish Cleaning Table

Client: NSW Department of Primary Industries

Designed	RE	Drawn	RE	Checked
Approved	<i>[Signature]</i>	Date	Aug 2012	<i>[Signature]</i>

XREFs

Scale

metres 0 0.05 0.1 0.15 0.20 0.25

Drawing Title

**Fish Cleaning Table
Curved Roof Sections and Detail**

2028-1003

Drawing Number

2028/105

Revision

A

NOTES

GENERAL

1. All materials to be free from burrs, nicks, scratches, and sharp edges
2. To assist with location and material choice refer to dwg. 2028/101 'Information'

CONCRETE

3. Foundation conditions to be assessed by a suitably qualified person
4. All workmanship and materials shall be in accordance with AS 3600 and AS 3610 current editions
5. Within 1km of the coast, concrete slab to be grade 40 MPa. Outside 1 km of the coast grade 32 MPa
6. SL72 mesh top and bottom with 45 mm cover
7. Nominal aggregate size: 20 mm
8. Slump: 80 mm
9. All cement shall be sulphate resistant
10. No admixtures shall be used in concrete
11. Concrete shall be compacted using mechanical vibrators
12. All concrete surfaces are to be cured by an approved method for a total of 7 days
13. Except as otherwise required, exposed concrete corners and edges shall have 20 mm chamfers

STEELWORK (Non Stainless)

14. All workmanship and materials shall be in accordance with AS 4100 and AS 1554 except where varied by the contract documents
15. Unless noted otherwise, all steel shall be in accordance with AS 3678 and AS 3679 grade 250 and rectangular hollow sections shall be grade 350 to AS 1163
16. Bolt designation : unless noted otherwise all bolts shall be M16 grade 4.6 316 stainless steel. No connection shall have less than 2 bolts. If and tb bolts to be installed using approved load indicating washers, or by turn of nut control of tensioning
17. Unless noted, all welds shall be 6 mm continuous fillet type sp (special purpose) using e41 xx electrodes. Butt welds shall be complete penetration butt welds to AS 1554
18. It is the Contractor's responsibility to ensure that steelwork is securely temporarily braced as necessary to stabilise the structure during erection
19. The Contractor shall provide all cleats and drill all holes necessary for fixing steel to steel whether or not detailed in the drawings
20. External steelwork shall be hot dipped galvanised

STAINLESS STEEL

21. Plain finish stainless steel to be 2.0 mm 316 marine grade
22. Welded stainless steel tube to comply with AS 1769 -1975
23. 75 Ø 316 stainless steel round tube min. wall thickness 1.6 mm to be capped at both ends. Tap fittings and water supply connection to be welded to tube.

ROOFING

24. Roof to be installed in accordance with manufactures instructions and guidelines.
25. Within 0 to 100 metres from breaking surf or exposed marine areas use Colourbond stainless steel. Within 101 to 200 metres from breaking surf or exposed marine areas use Colourbond Ultra steel. Within 201+ meters from breaking surf or exposed marine areas use Colourbond steel, Colourbond.

GALVANISING

26. The galvanized coating on all steel articles and material lists shall conform to the requirements of AS/NZS 4680

STANDARD FITTINGS (Manufactures are suggested only)

30. **QUARTER TURN TAP:**
Product: Standard Half Inch BSP quarter-turn hose end tap
Finish: Brass

31. WATER HOSE ON ALL TAPS:

Manufacturer: Galvin Engineering
Contact: www.galvinengineering.com.au
Product: 37412 - SS Slophopper Hose 10ID 750 X15
Finish: Heat Shrink Coating

32. CHOPPING BOARD:

Manufacturer: Dotmar
Contact: http://www.dotmar.com.au
Product: P300 Polystone Range
Finish: Natural Colour

OPTIONAL FITTINGS (Manufactures are suggested only)

33. **BIN:**
Manufacturer: SULO
Contact: www.sulo.com.au
Product: Galvanised Steel Wheelie Bin or Plastic
Lid: SULO Plastic Wheelie Bin 140 L Lid
Size: 120 litre capacity
Finish: Galvanised Steel or Plastic

34. BIN LOCK and LID RESTRICTOR (to suit item 33):

Manufacturer: SULO
Contact: www.sulo.com.au
Product: Single Bin, Wall Mounted, Security Bin Lock and Lid Restrictor

Finish: Galvanised Steel

35. WATER SAVING PUSH TAP:

Manufacturer: Galvin Engineering
Contact: www.galvinengineering.com.au
Product: 35515 - CP Ezy-Push® Push Button Hose Tap
Finish: Heavy Duty Long Lasting Bright Chrome Plate or Brass

36. LIGHT:

Manufacturer: Atom
Contact: www.atomlighting.com.au
Product: AT3301 Weatherproof Batten
Wattage: 1 x 14 Watt
Dimensions: 610 x 60 x 75 mm

Rev	Description	Date	Des.	App.	Chk.
A	Addition of table top tap and minor amendments to sections	11/06/15	RE	RE	TIM

Amendments

© GeoLINK 2012

This drawing must not be relied upon for any purpose other than that for which it was prepared or by any person or corporation other than the referred client.

GeoLINK

Environmental management and design

Level 1, 64 Balaclava Street
PO Box 119
LENNOX HEAD NSW 2478
T 02 6687 7666
F 02 6687 7782
Info@geolink.net.au

23 Gordon Street
PO Box 1446
COFFS HARBOUR NSW 2450
T 02 6651 7666
F 02 6651 7733

www.geolink.net.au

quality solutions sustainable future



New South Wales
Recreational
Fishing Trusts

NSW Department of Primary Industries

Fish Cleaning Table

Client

Designed	RE	Drawn	RE	Checked
Approved		Date	Oct 2012	
XREFs				
Scale				

metres

Drawing Title

Fish Cleaning Table

Notes

2028-1003

Drawing Number

2028/106

Revision

A