

10 Tables

Table 1: Current and proposed recreational take limits for SBT in NSW.

Table 2: Management regulations for the recreational catch of SBT by State.

Table 3: Global commercial catch records and Australian recreational catch estimates (t) for Southern Bluefin Tuna from 1993 to 2011. Commercial records obtained from CCSBT (2011a), see table for recreational estimate references. * Includes 4mt New Zealand armature catch, † Allocated catch for 2011.

Table 4: Number of charter boat caught Southern Bluefin Tuna from 2000 to 2011. Numbers in parenthesis indicate the number of caught fish that were subsequently released. NSW data obtained from the NSW DPI (Fisheries) charter boat monitoring program (NSW DPI (Fisheries) 2011). No data available for Victoria.

Table 5: NSW Charter Fishing Monitoring Program. Total fish (undifferentiated) and Southern Bluefin Tuna (SBT) retained and released charter catches from oceanic waters for years from 2000 to 2009. *2009 - incomplete data set.

Table 6: Gamefish Tournament Monitoring Program. Numbers of Southern Bluefin Tuna caught and tagged or free-released from 1994 to December 2011.

Table 7: Gamefish record data for Southern Bluefin Tuna caught and landed in New South Wales, South Australia, Tasmania, Victoria and Western Australia (GFAA 2011).

Table 8: Bermagui Big Game and Anglers Club catch records for Southern Bluefin Tuna (SBT) 2001 - 2011. Location of all SBT was given as Bermagui. Data Source: Bermagui Big Game and Anglers Club.

Table 9: The Victorian Game Fishing Club catch records for Southern Bluefin Tuna (SBT) catch from 1975 to 2009. Only SBT listed as caught in waters adjacent to NSW are listed here. The location of all SBT caught in NSW waters was given as Bermagui. Data Source: The Victorian Game Fishing Club.

Table 1: Current and proposed recreational take limits for southern bluefin tuna in NSW

Current Recreational Take Limits	Proposed Recreational Take Limits
Bag limit	
Seven*	One
Boat Limit	
No limit	Two
Charter Boat Limit	
No limit	Six
Size Restrictions	
No more than two $\geq 90\text{cm}$ Fork Length	No size restrictions
No more than five $< 90\text{cm}$ Fork Length	

*The bag limit is seven mixed tuna per person per day which corresponds to a maximum possible take of seven SBT per day.

Table 2: Management regulations for the recreational catch of SBT by State.

Western Australia	No minimum size limit. Personal bag limit of two tuna (SBT, yellowfin and bigeye tuna).
South Australia	No minimum size limit. Personal bag limit of two tuna (SBT and/or yellowfin tuna). Daily boat limit of 6 tuna (SBT and/or yellowfin tuna).
Tasmania	No minimum size limit. Personal bag limit of two tuna (SBT, yellowfin and bigeye tuna).
Victoria	No minimum size limit. Personal bag limit of two tuna (SBT, yellowfin and bigeye tuna).
New South Wales	No minimum size limit. 90 cm or greater bag limit of 2 mixed tuna*. Less than 90cm bag limit of 5 mixed tuna*. *Mixed tuna includes SBT, albacore, big-eye, longtail and yellowfin tuna

Table 3: Global commercial catch records and Australian recreational catch estimates (mt) for southern bluefin tuna from 1993 to 2011. Commercial records obtained from CCSBT (2011a), see table for recreational estimate references. * Includes 4mt New Zealand armature catch, † Allocated catch for 2011.

Fishery	Year																		
	1993	1994	1995	1996	1997	1998	1999	2000	2001	2002	2003	2004	2005	2006	2007	2008	2009	2010	2011
Commercial																			
World (Without Australia)	8969	8455	9424	11518	10761	12880	13977	10218	11178	10546	8250	8443	10906	6106	5770*	6362	5837	5351	5479 [†]
Australia	5373	4700	4508	5128	5316	4897	5552	5257	4853	4711	5827	5062	5244	5635	4813	5033	5108	4199	4270 [†]
Eastern Tuna and Billfish Industry															7.7 ⁽¹⁰⁾	22 ⁽¹²⁾	205 ⁽¹¹⁾	148 ⁽¹¹⁾	
Recreational																			
New South Wales									0.4-1.6 ⁽⁷⁾									13.3 ⁽⁷⁾	
South Australia														7.2 ⁽⁵⁾	10.0 ⁽⁵⁾				
Tasmania	12.5 ⁽¹³⁾	6.9 ⁽¹³⁾								18.4 ⁽⁶⁾	2.5 ⁽²⁾					14.0 ⁽⁴⁾			
Victoria																			300 ⁽⁹⁾
Western Australia														2.3 ⁽³⁾					
Australia wide		16 ⁽¹⁾				38 ⁽¹⁾	3 ⁽¹⁾	10 ⁽¹⁾	60 ⁽¹⁾	85 ⁽¹⁾									
										18-120 ⁽⁸⁾									

⁽¹⁾ Hobsbawn *et al.* (2007): Estimates based on limited Tasmanian charter and gamefish club data and expanded to total Australian catch using proportions of tag releases for each fishery area.

⁽²⁾ Morton and Lyle (2003): Estimated total recreational catch utilising on-site creel surveys, charter boat logbooks and gamefish angler diaries.

⁽³⁾ Sumner *et al.* (2008): Creel survey of boat-based fishers operating on the south-west coast between Augusta and Kalbarri, 1 July 2005 - 30 June 2006.

⁽⁴⁾ Forbes *et al.* (2009): Estimated total recreational catch using boat ramp surveys and charter logbook data. This figure represents a minimum as the study did not have complete spatial or temporal coverage.

⁽⁵⁾ AFMA (2009): Estimate of charter boat catch based on SA charter catch records (Rowse *et al.* 2008) using an average weight of 20kg.

⁽⁶⁾ Morton and Lyle (2003): Estimate of recreational catch based on 2002 data collected from 2003 on-site surveys using the average 2003 weight of 23kg.

⁽⁷⁾ Cardno Ecology Lab (2010): 2009 estimate of NSW recreational catch based on Bermagui locality tag and release weight to Bermagui BG & AC gamefish landed weight ratio. 2001 estimate extrapolated from Intended to be indicative only.

⁽⁸⁾ DEH (2008): Estimates of the recreational take of SBT vary between 18 tonnes (advised by Australia at CCSBT 9, October 2002) and in excess of 120 tonnes (provided by recreational fishers to SBTMAC).

⁽⁹⁾ James Andrews (pers comm, November 2011), Victoria DPI, Fisheries. Conservative estimate of total recreational catch incorporating boat ramp surveys, charter boat observers and personal diary records.

⁽¹⁰⁾ AFMA (2011b)

⁽¹¹⁾ BRS (2010)

⁽¹²⁾ BRS (2009)

⁽¹³⁾ Morton and Lyle (2003) and Forbes *et al.* (2009) (and references therein). Estimate of charter catch.

Table 4: Number of charter boat caught southern bluefin tuna from 2000 to 2011. Numbers in parenthesis indicate the number of caught fish that were subsequently released. NSW data obtained from the NSW I&I charter boat monitoring programme (NSW DPI (Fisheries) 2011). No data available for Victoria.

State	Year													
	1993	1994	2000	2001	2002	2003	2004	2005	2006	2007	2008	2009	2010	2011
New South Wales	<i>no data</i>	<i>no data</i>	0	7 (1)	2	0	1	0	0	2	1	27 (6)	0	0
South Australia									(432) ⁽¹⁾	(1101) ⁽¹⁾				
Tasmania	678(n/a) ⁽⁴⁾	295(n/a) ⁽⁴⁾				18(0) ⁽²⁾						162 (29) ⁽³⁾		
Western Australia								13(n/a) ⁽¹⁾	17(n/a) ⁽¹⁾					

⁽¹⁾ Rowsell *et al.* (2008)

⁽²⁾ Morton and Lyle (2003)

⁽³⁾ Forbes *et al* (2009): Underestimate as catch information was unavailable from several key operators.

⁽⁴⁾ Morton and Lyle (2003) and Forbes *et al.* (2009) (and references therein)

Table 5: NSW Charter Fishing Monitoring Program. Total fish (undifferentiated) and southern bluefin tuna (SBT) retained and released charter catches from oceanic waters for years from 2000 to 2009. *2009 - incomplete data set.

Year	Total No. of Fish Caught	No. of Fish Retained	Total No. of Fish Released	No. of Fish Tagged and Released	No. of SBT Caught	No. of SBT Released	SBT Percentage of Total Charter Catch (%)
2000	23,060	22,971	89	0	0	0	0.0000
2001	284,738	281,968	2,770	0	7	1	0.0025
2002	283,177	280,347	2,830	0	2	0	0.0007
2003	258,120	257,448	672	0	0	0	0.0000
2004	286,322	285,539	783	0	1	0	0.0003
2005	260,261	258,837	1,424	0	0	0	0.0000
2006	196,554	191,231	5,323	0	0	0	0.0000
2007	111,408	108,344	2,960	104	2	0	0.0018
2008	140,981	132,931	7,991	59	1	0	0.0007
2009*	98,828	88,359	10,413	56	19	6	0.0192

Table 6: Gamefish Tournament Monitoring Program. Numbers of southern bluefin tuna caught and tagged or free-released from 1994 to December 2011.

Tournament	Tournament Port	Date	Number of SBT Caught	Number of SBT Tagged	Number of SBT Free Released
NSW Interclub Tournament	Port Stephens	21/02/1998	1	1	0
NSW Interclub Tournament	Port Stephens	21/02/1998	1	1	0
NSW Interclub Tournament	Port Stephens	21/02/1998	1	1	0
NSW Interclub Tournament	Port Stephens	22/02/1998	2	2	0
Golden Lure Tournament	Port Macquarie	18/01/2002	1	1	0
Canberra Yellowfin Tournament	Bermagui	21/05/2007	1	0	1
Batemans Bay Yellowfin Tournament	Batemans Bay	12/06/2010	1	n/a	n/a

Table 7: Gamefish record data for southern bluefin tuna caught and landed in New South Wales, South Australia, Tasmania, Victoria and Western Australia (GFAA 2011).

State	No. of records	Mean weight (kg)	Max Weight (kg)
NSW	15	55.6	167.5
South Australia	25	25.3	115.0
Tasmania	27	55.1	153.0
Victoria	20	27.6	128.0
Western Australia	10	5.2	7.3

Table 8: Bermagui Big Game and Anglers Club catch records for southern bluefin tuna 2001 - 2011. Location of all SBT was given as Bermagui. Data Source: Bermagui Big Game and Anglers Club.

Year	Month	SBT Weight (kg)
2006	October	8
2007	June	76
2007	November	17
2008	September	24
2008	September	25
2009	June	87
2009	June	97
2009	June	120
2009	June	48
2009	June	77
2009	June	72
2009	June	127
2009	June	127
2009	June	84
2009	June	94
2009	June	100
2009	June	117
2009	June	88
2009	June	79
2009	July	25
2009	July	31
2010	July	54
2010	July	58
2010	July	50
2010	July	46
2010	July	38
2010	July	27
2011	June	41
2011	July	27
2011	July	52
2011	July	49
2011	July	53
2011	July	21
2011	July	70
2011	July	34
2011	July	35
2011	July	32
2011	July	32
2011	July	25

Table 9: The Victorian Game Fishing Club catch records for southern bluefin tuna catch from 1975 to 2009. Only southern bluefin tuna listed as caught in waters adjacent to NSW are listed here. The location of all SBT caught in NSW waters was given as Bermagui. Data Source: The Victorian Game Fishing Club.

Year	Month	Line Class (kg)	SBT Weight (kg)
1981	June	3	14.6
1981	June	6	21.0
1983	May	8	16.6
1987	September	4	7.0
1987	September	4	7.0
1987	September	8	9.7
1987	September	4	8.5
1987	September	6	11.9
1987	September	6	8.2
1987	September	6	9.4
1987	September	6	10.3
1987	September	8	10.5
1987	September	6	6.5
1987	September	10	10.0
1987	September	6	9.0
1987	September	6	8.8
1987	September	6	10.0
1988	February	15	23.5
1988	April	15	19.0
1988	April	15	26.0

11 Figures

Figure 1. Morphological features of Southern Bluefin Tuna, *Thunnus maccoyii* (Castelnau, 1872). From Gormon *et al.* (2008). Image source: NSW DPI (Fisheries)

Figure 2. Global Distribution of Southern Bluefin Tuna (*Thunnus maccoyii*). Figure reproduced from Caton (1994).

Figure 3. Fork length (FL) versus whole weight (W) relationship for Southern Bluefin Tuna (SBT) (*Thunnus maccoyii*). Figure reproduced from Caton (1991). Caton (1991) reported two weight - length relationships used for stock assessment: (i) SBT < 130 cm FL: $W = 10^{-5} \times 3.13088 FL^{2.2058}$, and (ii) SBT > 130 cm FL: $W = 10^{-6} \times 1.4036 FL^{3.5399}$.

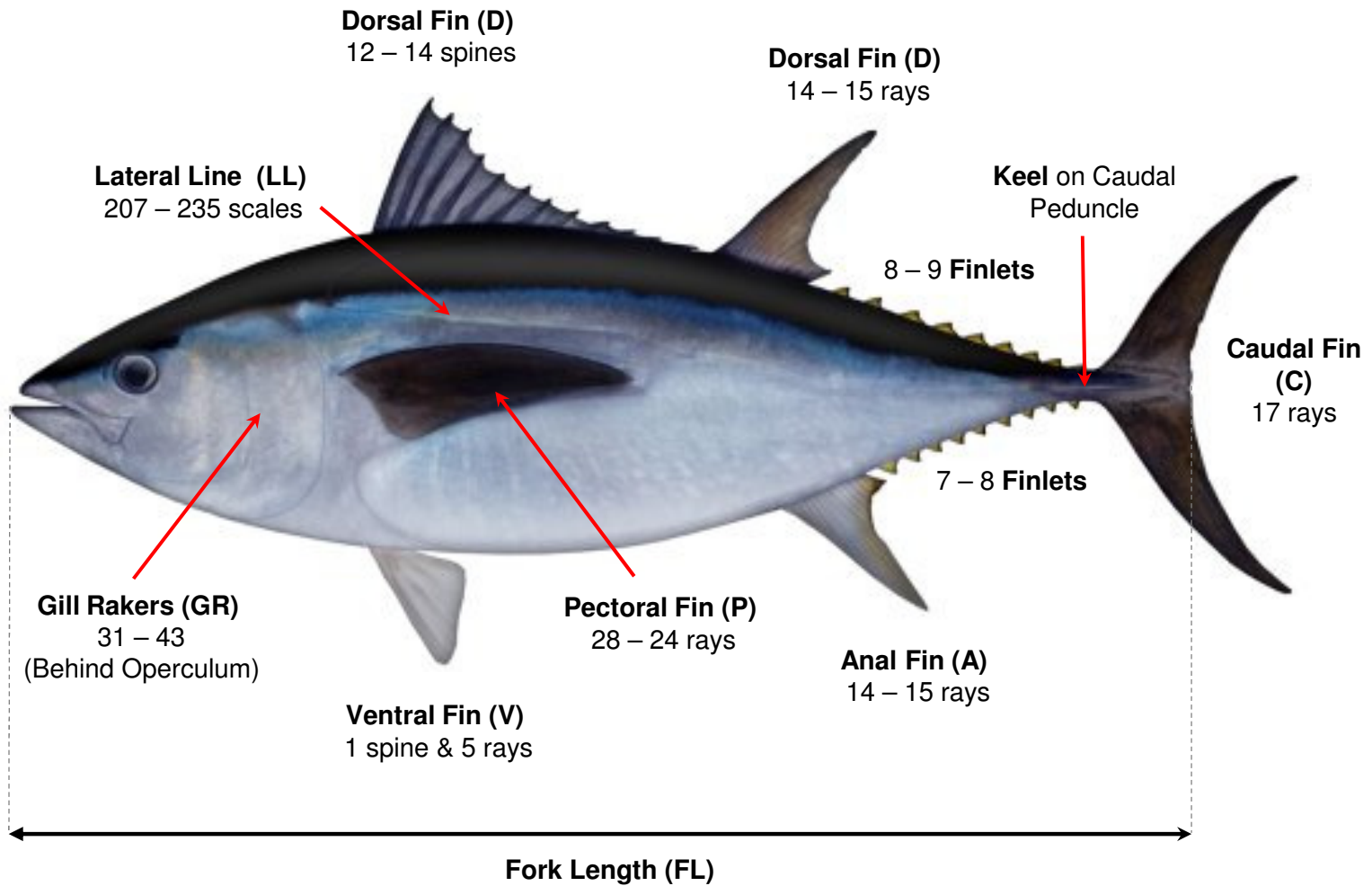
Figure 4. Area graph of global commercial Southern Bluefin Tuna (SBT) catch from 1952 - 2010. The Australian SBT commercial catch is shown as a proportion of global catch. Data source: Commission for the Conservation of Southern Bluefin Tuna (CCSBT) catch database (CCSBT 2011a)

Figure 5. The estimated Southern Bluefin Tuna (SBT) (a) recruitment and (b) spawning stock biomass trajectories for the full time series of the global fishery showing the medians, quartiles and 90th percentiles. The yellow line indicates the reference point of 20% of pre-exploitation spawning stock biomass (SSB₀). Figure reproduced from: CCSBT (Commission for the Conservation of Southern Bluefin Tuna) (2011), Report of the Fourteenth Meeting of the Scientific Committee. 19-28 July 2011 Bali, Indonesia. Figure 1, p19.

Figure 6. a) Total number of game fish tagged in Australia from 1974 – 2011 as part of the NSW Game Fish Tagging Program and the proportion of total tagged fish numbers represented by Southern Bluefin Tuna (SBT). **b)** Number of SBT tagged in NSW as a proportion of total number of SBT tagged in Australia, 1974 - 2011. Data source: NSW Game Fish Tagging Program administered by NSW DPI (Fisheries).

Figure 7. Number of tagged Southern Bluefin Tuna in NSW between 1974 and 2011 as part of the NSW Gamfish Tagging Programme.

Figure 8. Total number of tagged Southern Bluefin Tuna in NSW by month from 1974 – 2011 as part of the NSW Game Fish Tagging Program. Data source: NSW Game Fish Tagging Program administered by NSW DPI (Fisheries).



D XII-XIV; 14-15; 8-9 finlets **A** 14 – 15; 7-8 finlets **C** 17 **P** 28-34 **V** I, 5 **LL** 207-235 **GR** 31-43

Figure 1. Morphological features of southern bluefin tuna, *Thunnus maccoyii* (Castelnau, 1872). From Gormon *et al.* (2008). Image source: NSW DPI (Fisheries)

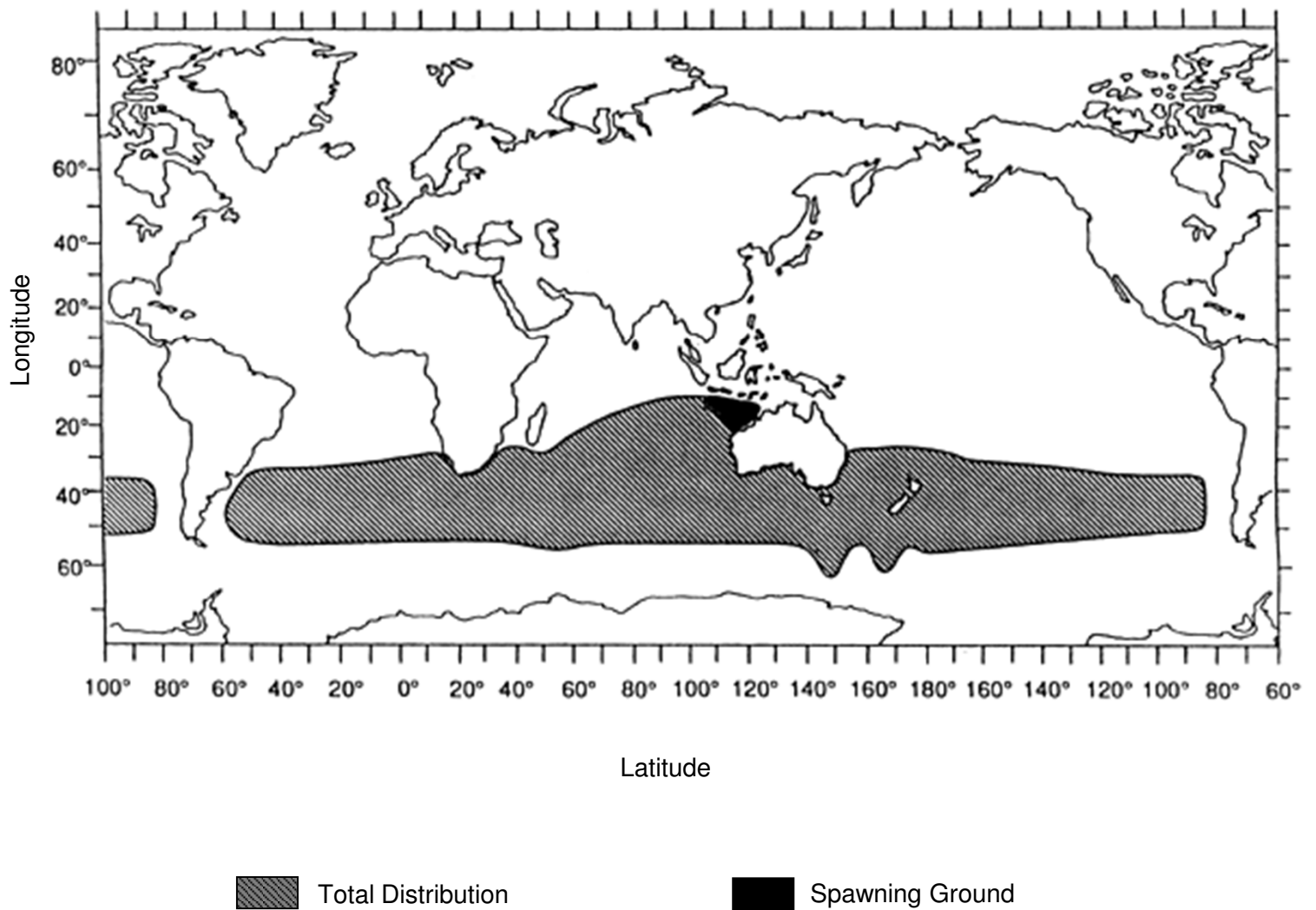


Figure 2. Global Distribution of southern bluefin tuna (*Thunnus maccoyii*). Figure reproduced from Caton (1994).

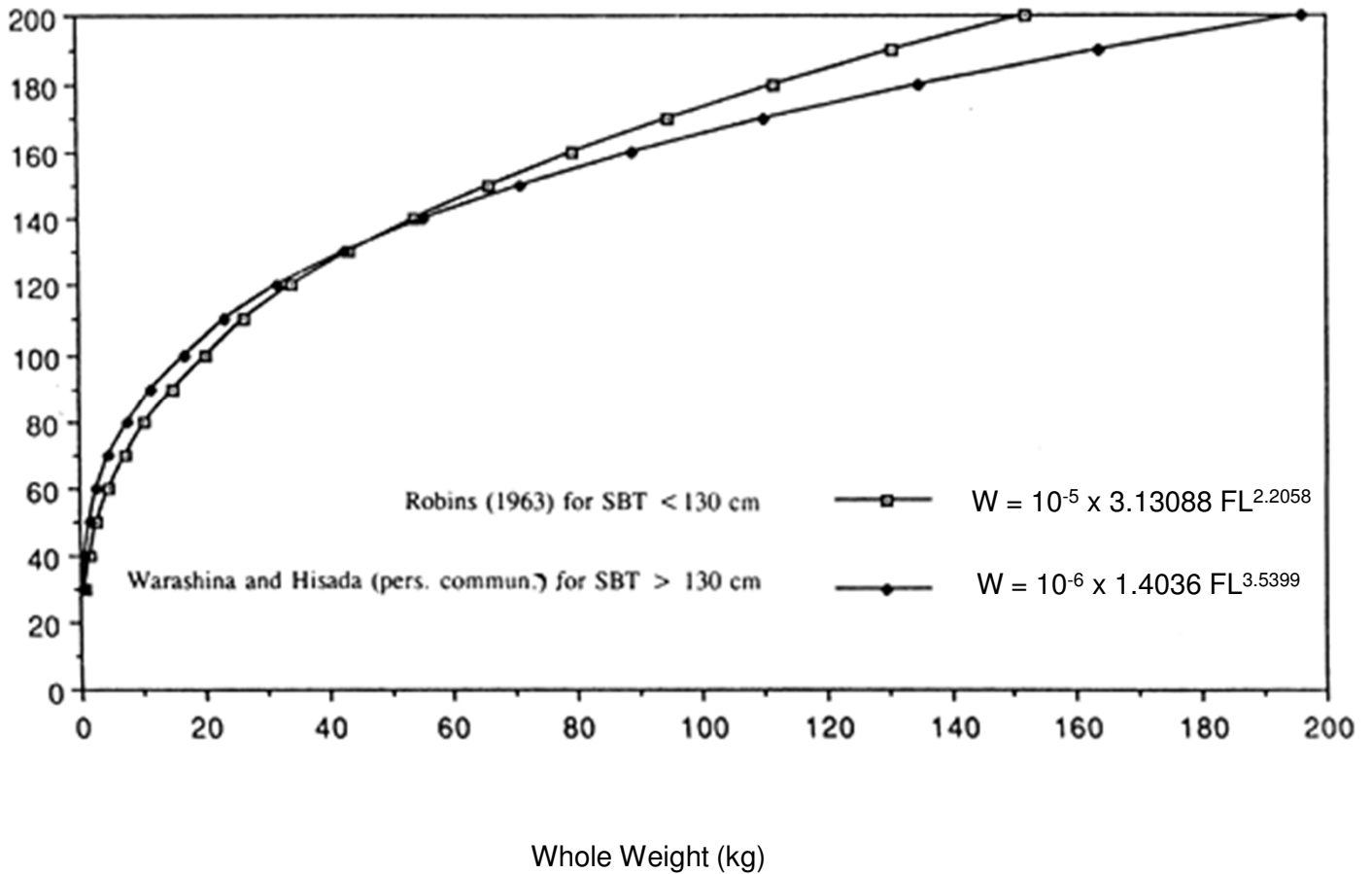


Figure 3. Fork length (FL) versus whole weight (W) relationship for southern bluefin tuna (*Thunnus maccoyii*). Figure reproduced from Caton (1991). Caton (1991) reported two weight - length relationships used for stock assessment: (i) SBT < 130 cm FL: $W = 10^{-5} \times 3.13088 FL^{2.2058}$, and (ii) SBT > 130 cm FL: $W = 10^{-6} \times 1.4036 FL^{3.5399}$.

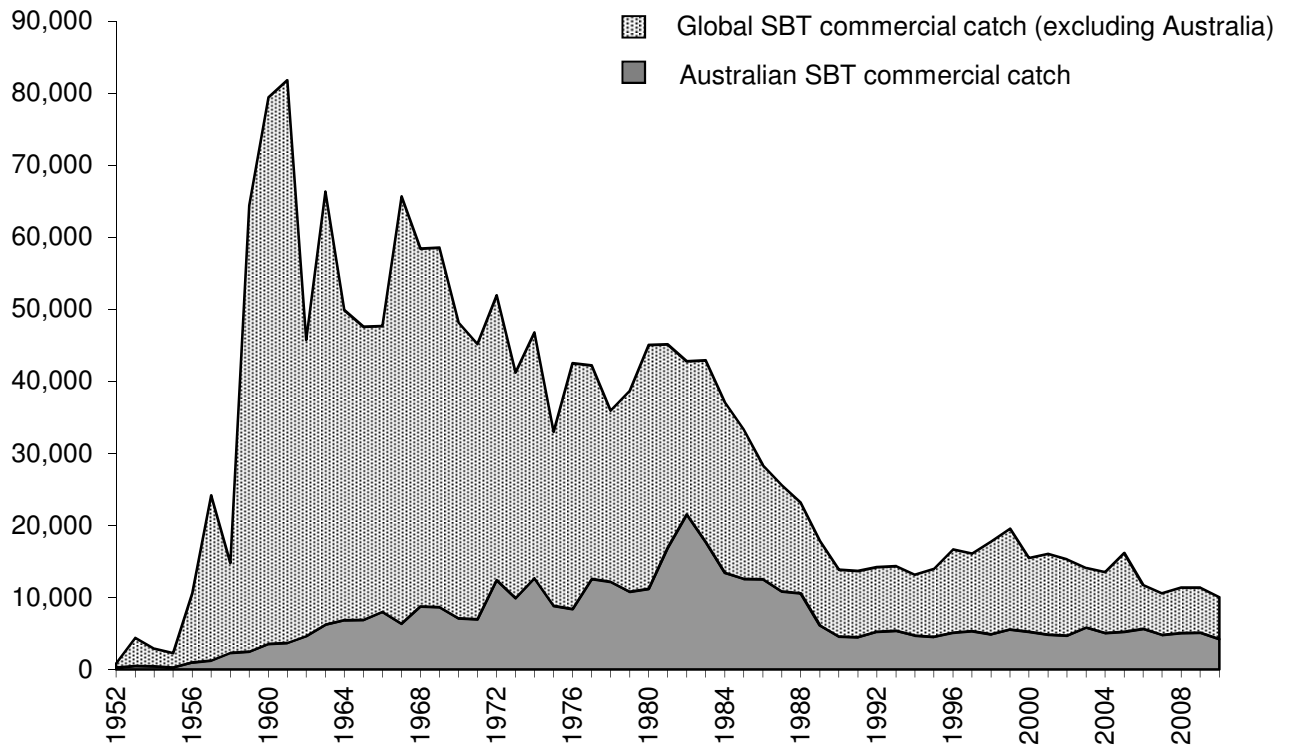


Figure 4. Area graph of global commercial SBT catch from 1952 - 2010. The Australian SBT commercial catch is shown as a proportion of global catch. Data source: Commission for the Conservation of southern bluefin tuna (CCSBT) catch database (CCSBT 2011a)

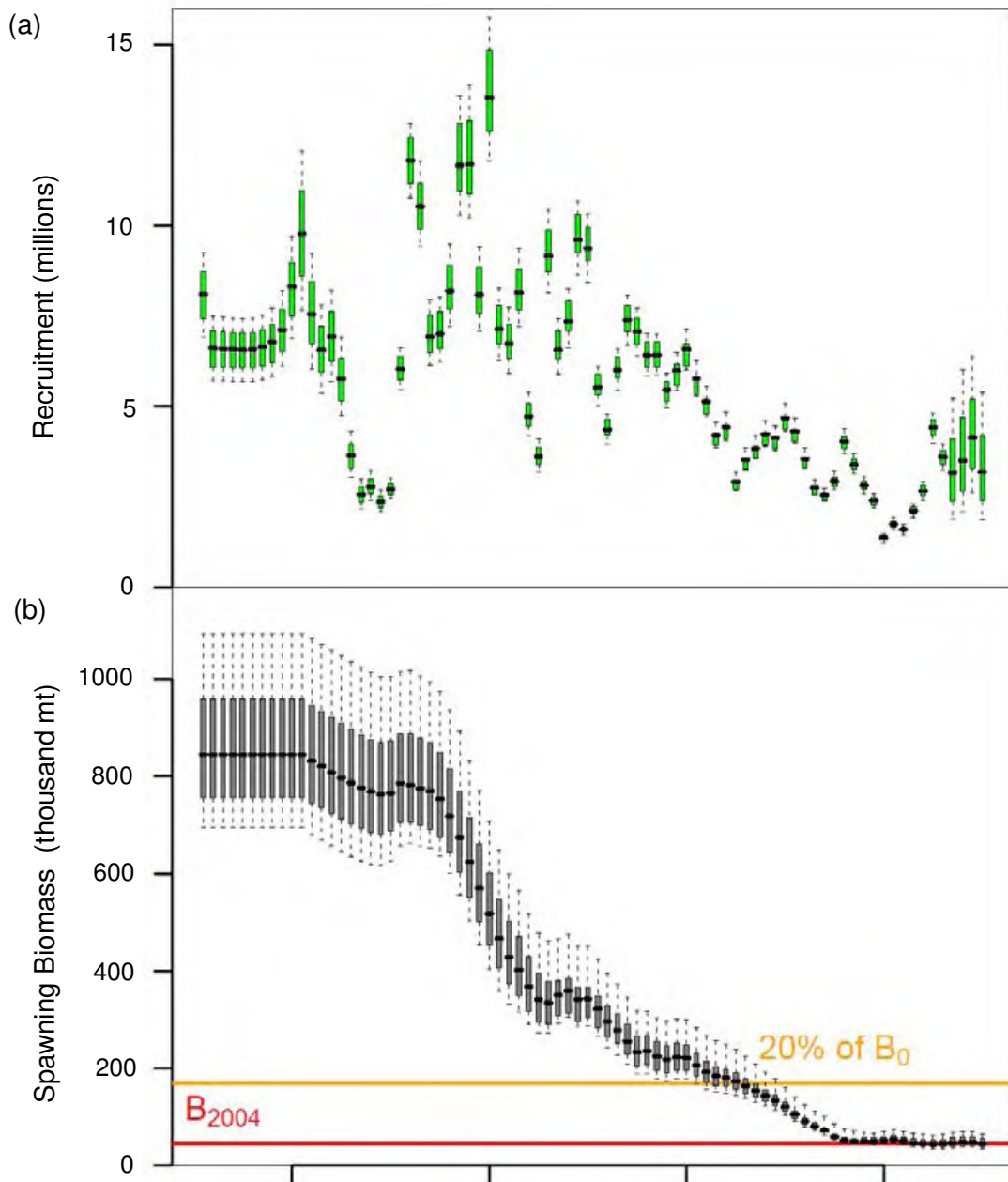


Figure 5. The estimated SBT (a) recruitment and (b) spawning stock biomass trajectories for the full time series of the global fishery showing the medians, quartiles and 90th percentiles. The yellow line indicates the reference point of 20% of pre-exploitation spawning stock biomass (SSB_0). Figure reproduced from: CCSBT (Commission for the Conservation of Southern Bluefin Tuna) (2011), Report of the Fourteenth Meeting of the Scientific Committee. 19-28 July 2011 Bali, Indonesia. Figure 1, p19.

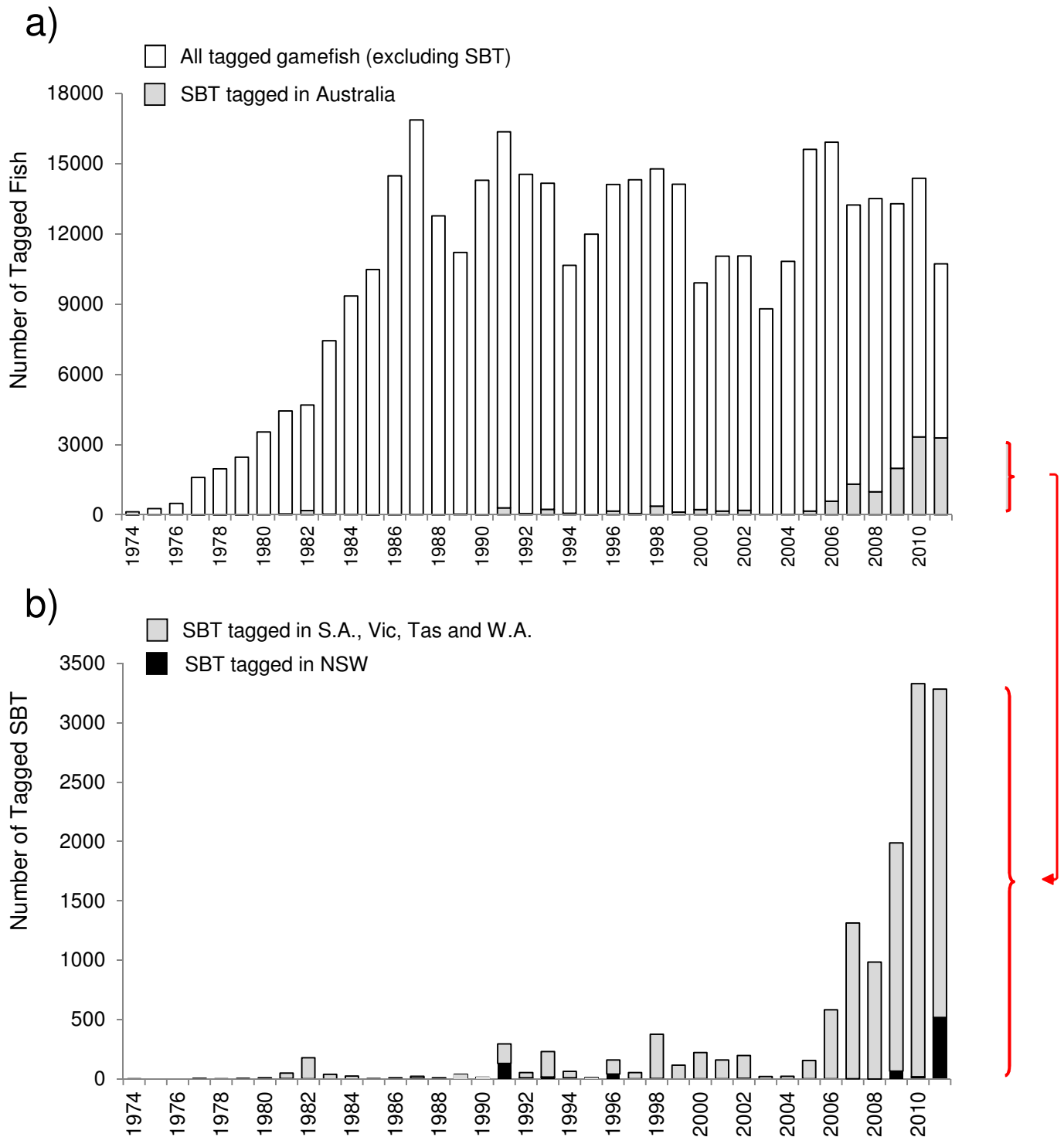


Figure 6. a) Total number of game fish tagged in Australia from 1974 – 2011 as part of the NSW Game Fish Tagging Program and the proportion of total tagged fish numbers represented by southern bluefin tuna (SBT). **b)** Number of southern bluefin tuna tagged in NSW as a proportion of total number of southern bluefin tuna tagged in Australia, 1974 - 2011. Data source: NSW Game Fish Tagging Program administered by NSW DPI (Fisheries).

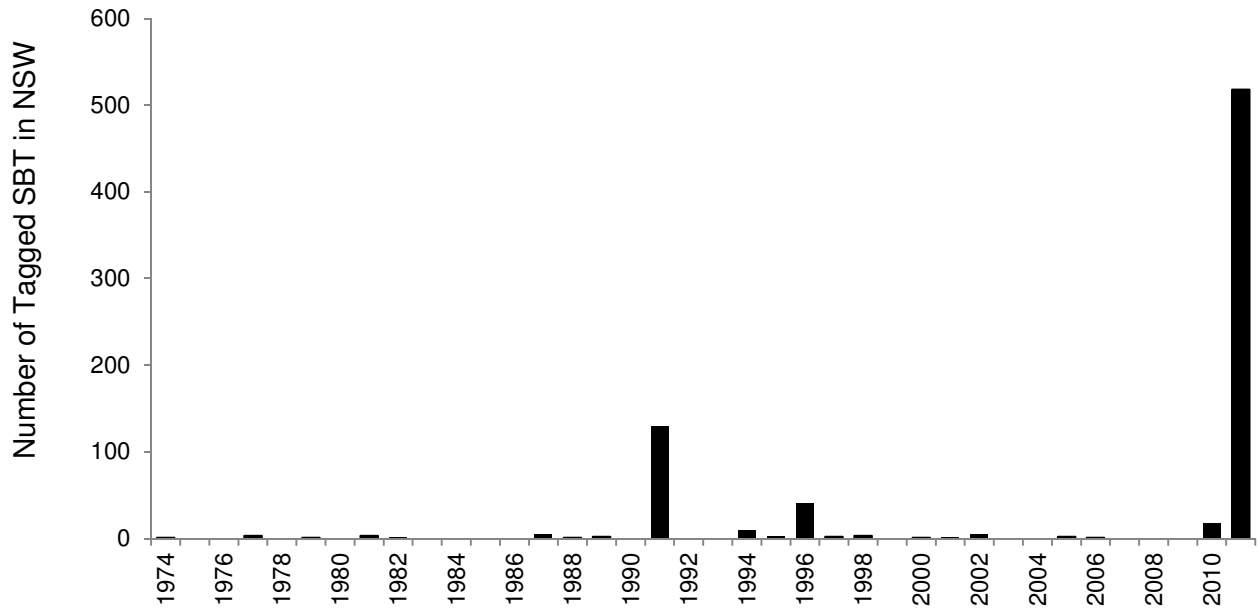


Figure 7. Number of tagged Southern Bluefin Tuna in NSW between 1974 and 2011 as part of the NSW Gamfish Tagging Programme.

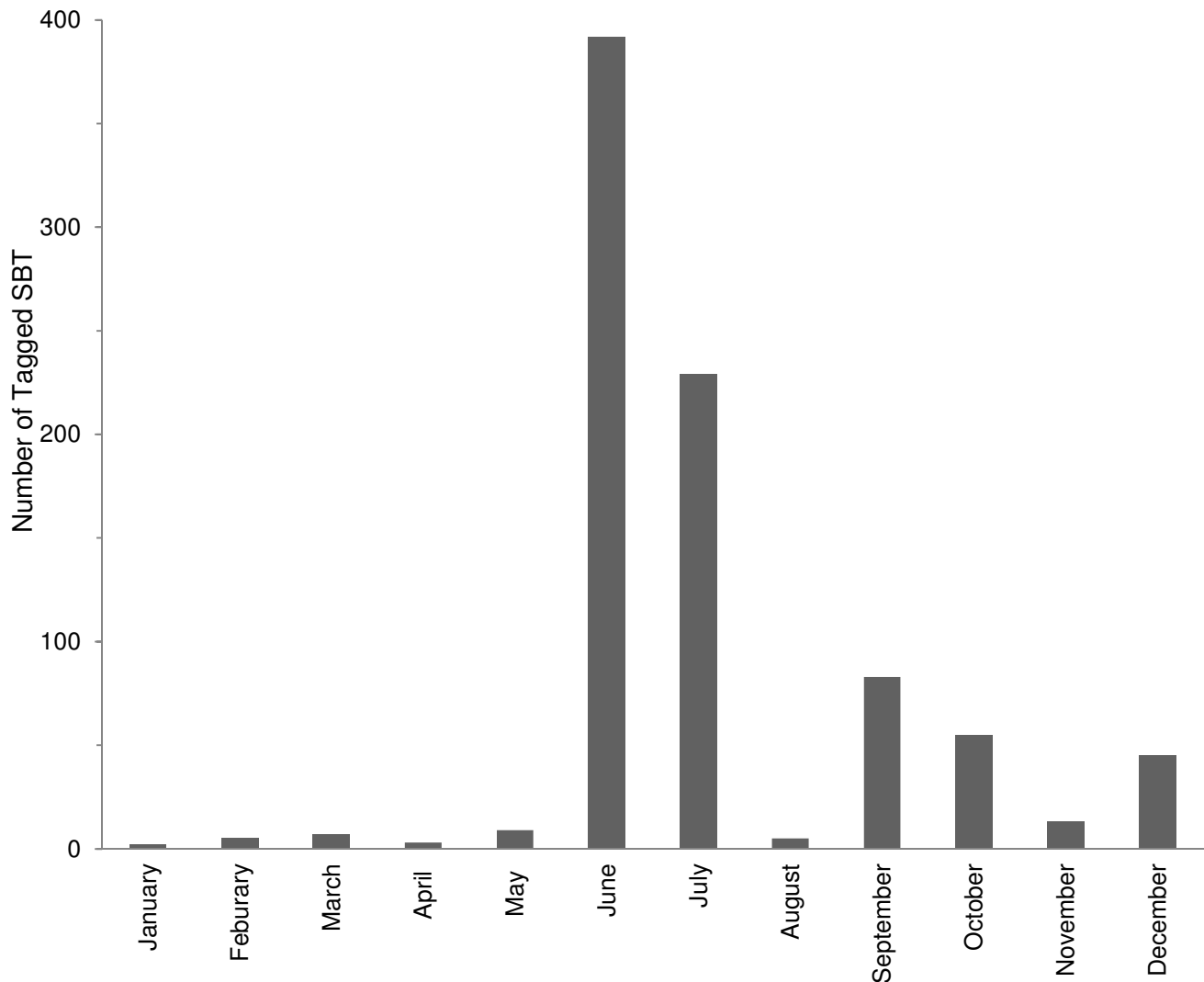


Figure 8. Total number of tagged Southern Bluefin Tuna in NSW by month from 1974 – 2011 as part of the NSW Game Fish Tagging Program . Data source: NSW Game Fish Tagging Program administered by I&I NSW.

12 Appendices

Appendix 1: Director General's Requirements for the Southern Bluefin Tuna Species Impact Statement

Appendix 2: Fisheries Management (General) Regulation 2010, Part 13 Charter Fishing Management, Clause 236.

Appendix 3: Gamefish record data for Southern Bluefin Tuna caught and landed in New South Wales, South Australia, Tasmania, Victoria and Western Australia (GFAA 2011).

Appendix 1: Director General's Requirements for the southern bluefin tuna Species Impact Statement.

Director-General's Requirements - Species Impact Statement – Southern Bluefin Tuna

1. Definitions

The definitions given below are relevant to these requirements:

development has the same meaning as in the *Environmental Planning and Assessment Act 1979*.

activity has the same meaning as in the *Environmental Planning and Assessment Act 1979*.

proposal is the development, activity or action proposed.

All other definitions are the same as those contained in the *Fisheries Management Act 1994*.

2. General requirements

Where relevant, the approaches, procedures and methodologies presented in the publication "*Guidelines for the Assessment of Aquatic Ecology in EIA*" (DUAP 1998) must be adopted when developing the SIS.

Previous surveys and assessments may be used to assist in addressing these requirements.

All references used in the SIS must be appropriately cited.

Where plans or maps are presented, each plan or map must include:

- an appropriate legend;
- a scale and orientation marks.

3. Matters which have been limited or modified

The following Section 221K matters need not be addressed by your SIS:

- All reference to critical habitat. There is currently no critical habitat declared under the *Fisheries Management Act 1994* for southern bluefin tuna.

4. Matters to be addressed

The SIS for southern bluefin tuna must meet all the matters specified in section 221J, sections 221K(1), 221K(2), 221K(4) of the *Fisheries Management Act 1994* with the exception of those matters limited or modified above. In addition to the statutory requirements (see *Fisheries Management Act 1994*) the matters described below are required to be addressed:

4.1 Relevant recovery and threat abatement plans

No recovery plans or threat abatement plans have been approved in accordance with the *Fisheries Management Act 1994*.

However, a discussion must be provided regarding any relevant management plans, recovery plans, threat abatement plans or action statements approved under other jurisdictions. For example, plans or statements approved under the Commonwealth *Environment Protection and Biodiversity Conservation Act 1999*, the *Threatened Species Conservation Act 1995*, the *Fisheries Management Act 1994* (including relevant Fisheries Management Strategies), and any similar legislation in other states.

4.2 Literature review and consultation

A literature review and scientific consultation should be undertaken to determine the:

- Current status of the species for the proposed activity
- Relevant biological information required for sustainable management of the species for the proposed activity

4.3 Assessment of likely impacts

The SIS should detail:

- The extent and nature of the proposed activity
- Discuss the potential and cumulative impacts the proposed activity may have on the species

Appendix 1: Continued. -

4.4 Ameliorative measures

In discussing alternatives to the activity, and the measures proposed to mitigate any effects of the activity, consideration must be given to developing long-term management strategies to protect areas within the study area that are of particular importance for the subject species. This may include proposals to restore or improve habitat; area or seasonal closures; bag or size limits; or controls on fishing gear.

Monitoring and evaluation plans must be outlined in detail, including the objectives of the monitoring program, method of monitoring, reporting framework, duration and frequency.

4.5 Additional Information and approvals required

In providing a list of other approvals the following must be included:

- Details of any referral or consent required under the *Commonwealth Environment Protection and Biodiversity Conservation Act 1999*.

Appendix 2: Fisheries Management (General) Regulation 2010, Part 13 Charter Fishing Management, Clause 236.

236 Conditions of licence—authorised activities

- (1) The Minister may, by means of an endorsement on a licence for a boat, authorise the use of the boat for guided recreational charter fishing that involves one or more of the following recreational fishing activities (as indicated by the endorsement):
 - (a) estuarine fishing,
 - (b) nearshore bottom fishing and sportfishing,
 - (c) gamefishing,
 - (d) deep sea bottom fishing.
- (2) It is a condition of a licence for a boat that the boat, while being used for any activity for which it is required to be licensed under this Part, is not used for any of the recreational fishing activities referred to in subclause (1) unless the licence authorises the use of the boat for that activity.
- (3) The Minister may refuse to authorise the use of a boat for a recreational fishing activity if the Minister is not satisfied that the certificate of survey for the boat relied on by the licence holder to satisfy the eligibility criteria for the licence was, at all times during the periods relevant for the purposes of determining eligibility for a licence, consistent with that type of activity.
- (4) Despite subclause (2):
 - (a) if a licence authorises the use of a boat for gamefishing, the taking of one fish of a species listed in Part 1 or Part 4 of the Table to this clause for each person who is on the boat, is permitted, and
 - (b) if a licence authorises the use of a boat for nearshore bottom fishing and sportfishing, the taking of one fish of a species listed in Part 1 or Part 2 of the Table, for each person who is on the boat, is permitted, and
 - (c) if a licence authorises the use of a boat for estuarine fishing, the taking of one fish of a species listed in Part 1 or Part 2 of the Table, for each person who is on the boat, is permitted.
- (5) This clause:
 - (a) does not affect the application of any bag limits or possession limits in force under section 17 or 18 of the Act, and
 - (b) does not authorise the use of a boat to take any protected fish.

Table Fish species

Part 1

Common name

Hapuku, Hapuka
Bass Groper, Bass Grouper
Blue-eye Trevalla, Trevalla
Banded Rockcod
Gemfish

Scientific name

Polyprion oxygeneios
Polyprion americanus
Hyperoglyphe antarctica
Epinephelus ergastularius
Rexea solandri

Appendix 2: Continued.

Part 2

Common name	Scientific name
Sailfish	<i>Istiophorus platypterus</i>
Black Marlin	<i>Makaira indica</i>
Blue Marlin	<i>Makaira nigricans</i>
Striped Marlin	<i>Tetrapturus audax</i>
Shortbill Spearfish	<i>Tetrapturus angustirostris</i>
Swordfish, Broadbill Swordfish	<i>Xiphias gladius</i>
Shortfin Mako	<i>Isurus oxyrinchus</i>
Tiger Shark	<i>Galeocerdo cuvier</i>
Hammerhead Shark	<i>Sphyrna</i> spp.
Thresher Shark	<i>Alopias</i> spp.
Porbeagle	<i>Lamna nasus</i>
Albacore, Albacore Tuna	<i>Thunnus alalunga</i>
Yellowfin Tuna	<i>Thunnus albacares</i>
Southern Bluefin Tuna	<i>Thunnus maccoyii</i>
Longtail Tuna	<i>Thunnus tonggol</i>
Bigeye Tuna	<i>Thunnus obesus</i>

Part 3

Common name	Scientific name
Yellowtail, Jack Mackerel, Trevally, Rainbow Runner, Kingfish, Samsonfish, Amberjack	Family <i>Carangidae</i>
Mackerel, Wahoo, Bonito, Skipjack Tuna, Mackerel Tuna	Family <i>Scombridae</i> (excluding <i>Thunnus</i> spp.)
Cobia	<i>Rachycentron canadum</i>
Tailor	<i>Pomatomus saltatrix</i>
Mahi Mahi, Dolphinfish	<i>Coryphaena hippurus</i>
Eastern Australian Salmon, Australian Salmon	<i>Arripis trutta</i>
Whaler Shark, Blue Shark	Family <i>Carcharhinidae</i> (excluding <i>Galeocerdo cuvier</i>)
Barracuda, Snook, Striped Seapike	Family <i>Sphyraenidae</i>

Part 4

All species of fish other than those listed in Parts 1, 2 and 3.

Appendix 3: Gamefish record data for southern bluefin tuna caught and landed in New South Wales, South Australia, Tasmania, Victoria and Western Australia (GFAA 2011).

Date	Location	Weight
New South Wales		
14-May-38	Bermagui	107.9
29-Mar-66	Bermagui	20.4
9-Dec-69	Sydney	5.4
23-Jun-07	Moruya Canyons	35.0
20-Jun-09	Bermagui	24.6
28-Jun-09	Bermagui	84.4
9-Jul-09	Tathra	128.0
9-Jul-09	Tathra	167.5
11-Jul-09	Bermagui	28.0
5-Jul-10	Tathra	58.3
25-Jun-11	Tathra Canyons	27.8
27-Jun-11	Montague Sea Mount	61.6
28-Jun-11	Bermagui	70.4
1-Jul-11	Bermagui	25.4
2-Jul-11	Montague East	30.1
South Australia		
2-Apr-67	Sth Neptune Island	43.1
12-Jun-80	D'Estree Bay	115.0
25-May-83	Port MacDonnell	16.6
24-Jun-92	Port Lincoln	8.0
25-Jun-92	Cabbage Patch	11.0
21-Feb-96	Streaky Bay	24.1
5-Feb-97	Streaky Bay	36.5
5-Feb-97	Cannon Reef	36.5
19-Feb-97	Ward Island	20.5
5-Jun-99	Port MacDonnell	23.4
1-Apr-07	Port MacDonnell	34.0
21-Apr-07	Port Mac Donnell	14.2
12-May-07	Liguanea Is	12.9
12-May-07	Liguanea Is	14.3
8-May-08	Port MacDonnell	20.4
8-May-08	Port MacDonnell	17.7
31-May-08	Port MacDonnell	20.0
1-Jun-08	Port MacDonnell	13.7
7-Mar-09	Port McDonnell	28.1
13-Apr-09	Pt MacDonnell	19.3
6-May-09	Port MacDonnell	16.2
6-May-09	Pt MacDonnell	14.6

Continued...

Appendix 3: Continued.

Date	Location	Weight
Tasmania		
3-May-62		96.6
8-May-62		13.6
6-May-63	Kelly Island	70.8
29-May-63	Cape Pillar	79.8
2-Mar-76	Hippolytes	59.0
6-Mar-78		22.0
28-May-79		19.7
11-May-80	Tasman Island	106.5
7-Mar-81	Tasman Island	37.0
19-Apr-81	St Helens	21.7
3-May-81	Eagle Hawk Neck	45.3
30-Apr-82		115.5
9-Jun-82		13.8
20-Apr-85		125.8
21-Apr-88		28.0
22-Apr-88	Hippolyte Rock	24.5
30-Apr-88		31.5
7-Feb-89		20.6
11-May-90		106.5
24-Apr-95		36.0
19-Feb-97	Ward Island	20.5
12-May-01	Eaglehawk Neck	25.0
11-May-07	St Helens	153.0
1-Jun-08	Pedra Branca Rock	79.0
8-Mar-09	Tasman Is	20.4
8-Mar-09	Hypolites	26.8
16-May-09	The Lanterns	90.2
Victoria		
6-Feb-79		18.3
11-Jul-79		32.8
15-May-81		14.8
7-Jun-81		14.6
7-Jun-81		21.0
7-Jun-81		14.4
17-May-82		21.0
14-Jun-82		9.8
14-Jun-82		12.4
10-Jul-82		12.4
11-Jun-83		14.4
22-Jan-90		21.0
6-May-90		23.5
28-Apr-91		20.6
26-May-91		14.2
19-May-10	Port Fairy	125.1
22-May-10	Port Fairy	128.0
5-Jul-10	Portland	11.3
24-Jul-10	Portland	8.7
29-May-11	Pt Fairy	13.8

Continued...

Appendix 3: Continued.

Date	Location	Weight
Western Australia		
7-Feb-09	Rottnest Is	3.8
14-Mar-10	Rottnest Is	3.0
4-Jul-10	Rottnest Is	4.2
4-Jul-10	Rottnest Is	4.2
7-Aug-10	Rottnest Is	6.5
29-Aug-10	Rottnest Is	7.1
29-Aug-10	Rottnest Is	6.9
5-Sep-10	Rottnest Is	7.3
18-Sep-10	Rottnest Is	5.1
3-Jan-11	Rottnest Is	3.4

Dr Geoff Allan
c/- NSW Department of Primary Industries
Locked Bag 1
NELSON BAY NSW 2315

Dear Dr Allan,

I am writing to you on behalf of the Aboriginal Fishing Advisory Council (AFAC) in regards to the proposed *Fisheries Management (Southern Bluefin Tuna) Order 2013* (the Order).

AFAC recognises that Southern Bluefin Tuna are predominately caught in waters on the edge of the continental shelf and therefore they are not a significant species harvested by cultural fishers but, could still be landed on occasion.

If the science supports the recreational take of Southern Bluefin Tuna even with its listing as a threatened species than AFAC supports the proposed Order. AFAC wishes to note however, that cultural fishing access to other protected fish species should be given similar consideration in the future.

It is also timely to note that AFAC is working on the development of cultural fishing regulations that will allow limits (including bag and possession limits) to be applied to the special cultural fishing provisions of the Act (which are yet to be commenced) . In the meantime, an Interim Compliance Policy (ICP) is in place to reflect community needs whilst the proposed regulations are negotiated. The ICP allows an individual to take double (except for abalone) the recreational bag/possession limit if for the purpose of providing for cultural needs where elders, the incapacitated or other community members who are able to or it is otherwise not appropriate for them to engage in Aboriginal cultural fishing.

Although, cultural fishing is considered distinct from commercial and recreational fishing it will become even more recognised through the development of this regulation. Given this Order explicitly grants authorisation for recreational fishers to take Southern Bluefin Tuna, cultural fishing will need to be incorporated into this Order and future Orders so as to allow for continued cultural fishing access to such species once the pending cultural fishing regulation commences.

Please do not hesitate to contact me directly on 0438 993 784 if you have any inquiries regarding this matter.

Yours sincerely



Danny Chapman
Chairperson
Aboriginal Fishing Advisory Council
Date: 17/6/13

Received PSFF
28/06/13

Dr Geoff Allan
Executive Director, Fisheries NSW
Port Stephens Fisheries Institute
Locked Bag 1
NELSON BAY NSW 2315

Dear Dr Allan

I am writing to you in response to your letter of 6 May 2013 on behalf of the NSW Advisory Council on Recreational Fishing (ACoRF) in relation to the proposed *Fisheries Management (Southern Bluefin Tuna) Order 2013*.

The Council was consulted out of session in May 2013 regarding this issue. There is general support from Council for the order to be made to authorise continued recreational fishing for Southern Bluefin Tuna in accordance with applicable regulatory controls.

Council understands that the proposed Ministerial order and relevant Species Impact Statement (SIS) as well as this advice from ACoRF will be placed on public exhibition prior to the order being made.

Please contact me if you need any further information.

Yours sincerely



Bruce Schumacher
Chairman
Advisory Council on Recreational Fishing
17th June 2013

Your Ref: OUT12/29768



Dr Geoff Allan
Executive Director, Fisheries NSW
Port Stephens Fisheries Institute
Locked Bag 1
NELSON BAY NSW 2315

Dear Dr Allan,

Thank you for giving the Fisheries Scientific Committee (FSC) the opportunity to consider the draft *Fisheries Management (Southern Bluefin Tuna) Order 2013*.

The FSC is of the opinion that the regulation amendments set out in the draft Order may significantly reduce fishing pressure on the endangered Southern Bluefin Tuna.

The FSC supports the Order as it stands

Yours sincerely,

Dr Jane Williamson
Chairperson
Fisheries Scientific Committee
30th May 2013