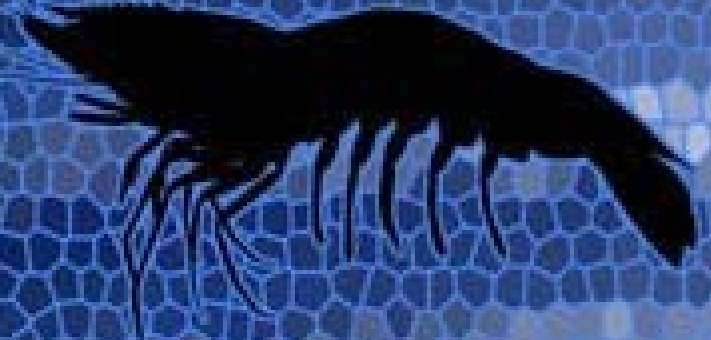
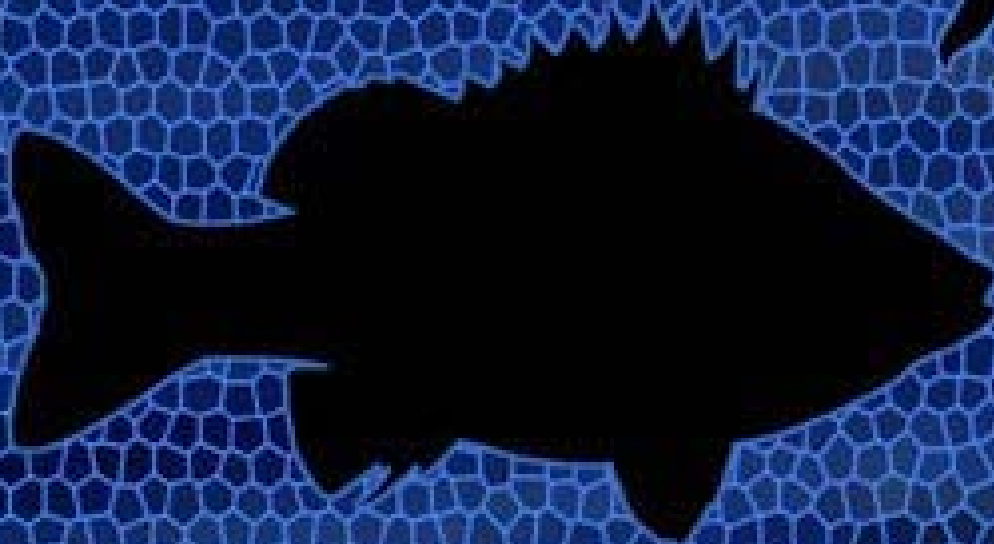
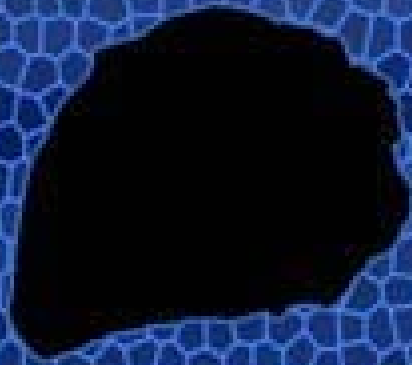


AQUACULTURE PRODUCTION



START

2004/2005



NSW DEPARTMENT OF
PRIMARY INDUSTRIES

MINISTER'S MESSAGE

It is my great pleasure to present the NSW Government's Aquaculture Production report for the 2004-2005 financial year.

NSW has enjoyed sustained growth in the aquaculture sector, maintaining its status as a major contributor to seafood production in NSW. The industry continues to provide valuable local jobs, tourism opportunities and income for rural and regional communities, and we are committed to encouraging the further development of industry into the future.

Despite the ongoing impacts of disease, drought and increased volumes of imported product, the value of the NSW aquaculture industry remained stable comparative to last year. However, with the addition of a new category for oyster spat sales, the overall value rose to \$51.8 million.

In addition the production levels of the non-oyster aquaculture sectors showed an increase in value of 6.7% and production of 3.7%.

The top two finfish producers, silver perch and rainbow trout, performed strongly this year, posting production increases of 30 tonne and 48 tonne respectively. Once again the barramundi industry performed well with an increase in production of 20 tonne or 16% and a slight increase in the dollar value per kilogram. This sector continues to sustain its production and maintain its ranking as the third largest farmed finfish producer in NSW. It was also encouraging to see the farm gate price of black tiger prawns rally this year increasing by \$3/kg, after a significant drop the previous year. Despite the drop prawns remain the most valuable landbased aquaculture sector in NSW.

Edible oyster production decreased in value by 10%, largely attributed to a decrease in production from the Hawkesbury River following the QX outbreak. Despite an increase in average prices per dozen this year, the total value remained down. Nevertheless, the Sydney rock oyster is again the most valuable fishery to the State's economy.

Significant volumes of Angasi and pearl oysters were also produced in the 2004-2005 financial year.

I would like to thank all farmers who contributed to this report, as their on-going cooperation is invaluable. I look forward to watching the aquaculture industry continue to thrive in NSW in the future.



Ian Macdonald, MLC
NSW Minister for Primary Industries



TABLE OF CONTENTS

Land Based Production

- Table 1 - Snapshot of Aquaculture Production for 2004/2005
- Table 2 - Fish, Crustacean and Mollusc Production 2004/2005
- Table 3 - Commercial Hatchery Production 2004/2005
- Figure A - Comparative Graph: Non-Oyster Aquaculture Production

Oyster Production

- Table 4 - Sydney Rock Oyster Production 2001/2002, 2002/2003, 2003/2004 and 2004/2005 by Estuary
- Table 5 - Sydney Rock Oyster Sales by Estuary and Production Method
- Table 6 - Sydney Rock Oyster Sales by Market
- Table 7 - Sydney Rock Oyster Sales by Production Method
- Table 8 - Sydney Rock Oyster Sales by Permit Holders
- Figure B - Percentage of Permit Holders by Production Range
- Table 9 - Sydney Rock Oyster Sales by Estuary
- Figure C - Comparative Graphs: Sydney Rock Oyster Production
- Table 10 - Pacific Oyster Sales from Port Stephens
- Table 11 - Pacific Oyster Sales by Production Methods
- Table 12 - Pacific Oyster Sales by Market
- Figure D - Comparative Graphs: Pacific Oyster Production
- Table 13 - Spat Production Value by Cultivation Method

Appendix 1 - Oyster Price and Weight conversions

Appendix 2 – About this Publication

Table 1: Snapshot of Aquaculture Production for 2004/2005

Grouping	Common Name	Scientific Name	No. Farms with Permits for this Species	No. Farms Producing this Species	Commercial Production Area (ha)	Production (kg)	Average Price per kg (\$)	Total Value (\$)	
Crustaceans	black tiger prawn	<i>Penaeus monodon</i>	15	5	129.69	294,440	15.16	\$4,463,559	
	redclaw	<i>Cherax quadricarinatus</i>	15	N/a	2.00	50	40.00	\$2,000	
	yabby	<i>Cherax destructor</i>	122	25	84.90	22,982	15.74	\$361,660	
Freshwater fish	Australian bass	<i>Macquaria novemaculeata</i>	45	N/a	0.30	50	12.00	\$600	
	Barcoo grunter	<i>Scortum barcoo</i>	6	N/a	0.01	5,000	10.00	\$50,000	
	barramundi	<i>Lates calcarifer</i>	10	5	0.73	121,414	11.20	\$1,359,673	
	brook trout	<i>Salvelinus fontinalis</i>	8	N/a	2.20	300	11.50	\$3,450	
	eel-long finned	<i>Anguilla reinhardtii</i>	28	N/a	5.27	8,194	11.62	\$95,224	
	golden perch	<i>Macquaria ambigua</i>	113	5	7.60	3,493	15.63	\$54,607	
	Murray cod	<i>Maccullochella peelii</i>	70	10	13.11	26,257	14.24	\$373,921	
	rainbow trout	<i>Oncorhynchus mykiss</i>	31	8	7.45	217,636	8.18	\$1,780,069	
	silver perch	<i>Bidyanus bidyanus</i>	124	34	71.59	269,541	9.02	\$2,431,429	
	sleepy cod	<i>Oxyeleotris lineolatus</i>	7	N/a	0.04	380	22.63	\$8,600	
	Marine fish	mulloway	<i>Argyrosomus japonicus</i>	23	N/a	1.54	8,402	8.13	\$68,312
		silver bream	<i>Acanthopagrus australis</i>	15	N/a	0.10	50	12.24	\$612
snapper		<i>Pagrus auratus</i>	14	N/a	0.01	188	8.00	\$1,504	
Sub total								\$11,055,220	
Hatchery	Hatchery (species)	(see hatchery production table)						\$2,092,767	
Mollusc - oysters	Sydney rock oyster	<i>Saccostrea glomerata</i> (see oyster production tables)						\$33,868,110	
	Pacific oyster	<i>Crassostrea gigas</i> (see oyster production tables)						\$1,919,639	
	flat oysters	<i>Ostrea angasi</i>						\$98,293	
	oyster spat							\$1,871,085	
Mollusc - other	blue mussel	<i>Mytilus galloprovincialis</i>	N/a	N/a	0.23	36,390	5.90	\$214,860	
*Other								\$669,218	
Total \$ Value								\$51,789,192	

N/a = not available due to confidentiality e.g. fewer than 5 permits

*Other = Due to confidentiality these figures are included under this category. Species include Pearl Oyster *Pinctada imbricata*, tube worms *Diopatra dentata*, eastern freshwater cod *Maccullochella ikei*, mullet *Mugil cephalus*, and Triploid Pacific oysters *Crassostrea gigas*.

Note that the "Average Price per kg (\$)" has been rounded to nearest cent.

Table 2: Fish, Crustacean and Mollusc Production 2004/2005

Grouping	Common Name	Scientific Name	No. Farms with Permits for this Species	No. Farms Producing this Species	Commercial Production Area (ha)	Production (kg)	Average Price per kg (\$)	Total Value (\$)
Crustaceans	black tiger prawn	<i>Penaeus monodon</i>	15	5	129.69	294,440	15.16	\$4,463,559
	redclaw	<i>Cherax quadricarinatus</i>	15	N/a	2.00	50	40.00	\$2,000
	yabby	<i>Cherax destructor</i>	122	25	84.90	22,982	15.74	\$361,660
Freshwater fish	Australian bass	<i>Macquaria novemaculeata</i>	45	N/a	0.30	50	12.00	\$600
	Barcoo grunter	<i>Scortum barcoo</i>	6	N/a	0.01	5,000	10.00	\$50,000
	barramundi	<i>Lates calcarifer</i>	10	5	0.73	121,414	11.20	\$1,359,673
	brook trout	<i>Salvelinus fontinalis</i>	8	N/a	2.20	300	11.50	\$3,450
	eel-long finned	<i>Anguilla reinhardtii</i>	28	N/a	5.27	8,194	11.62	\$95,224
	golden perch	<i>Macquaria ambigua</i>	113	5	7.60	3,493	15.63	\$54,607
	Murray cod	<i>Maccullochella peelii</i>	70	10	13.11	26,257	14.24	\$373,921
	rainbow trout	<i>Oncorhynchus mykiss</i>	31	8	7.45	217,636	8.18	\$1,780,069
	silver perch	<i>Bidyanus bidyanus</i>	124	33	71.59	269,541	9.02	\$2,431,429
	sleepy cod	<i>Oxyeleotris lineolatus</i>	7	N/a	0.04	380	22.63	\$8,600
	Marine fish	mulloway	<i>Argyrosomus japonicus</i>	23	N/a	1.54	8,402	8.13
silver bream		<i>Acanthopagrus australis</i>	15	N/a	0.10	50	12.24	\$612
snapper		<i>Pagrus auratus</i>	14	N/a	0.01	188	8.00	\$1,504
Molluscs	blue mussel	<i>Mytilus galloprovincialis</i>	N/a	N/a	0.23	36,390	5.90	\$214,860
*Other								\$669,218
Total \$ Value								\$11,939,298

N/a = not available due to confidentiality e.g. fewer than 5 permits

*Other = Due to confidentiality these figures are included under this category. Species include Pearl Oyster *Pinctada imbricata*, tube worm *Diopatra dentata*, eastern freshwater cod *Maccullochella ikei*, mullet *Mugil cephalus* and Triploid Pacific Oysters *Crassostrea gigas*.

Note that the "Average Price per kg (\$)" has been rounded to the nearest cent.

Table 3: Commercial Hatchery Production 2004/2005

Grouping	Common Name	Scientific Name	Number of Permits	Hatcheries Producing	Product Description	Quantity	Average Price per Unit (\$)	Total Value (\$)	
Crustaceans	black tiger prawn	<i>Penaeus monodon</i>	10	N/a	Prawn post-larvae (per 1,000)	5,533	0.01	\$54,000	
	yabby	<i>Cherax destructor</i>	N/a	N/a	Juveniles	525,500	0.18	\$95,950	
Freshwater fish	aquarium species	<i>Various species</i>	8	N/a	Fish fingerlings (per individual)	17,035	1.00	\$17,035	
	Australian bass	<i>Macquaria novemaculeata</i>	18	N/a	Fish fingerlings (per individual)	152,000	0.53	\$80,000	
	brook trout	<i>Salvelinus fontinalis</i>	7	N/a	Fish fry (per individual)	5000	1.00	\$5,000	
	eel tailed catfish	<i>Tandanus tandanus</i>	24	N/a	Fish fingerlings (per individual)	9105	1.32	\$12,007	
	golden perch	<i>Macquaria ambigua</i>	42	8	Fish fingerlings (per individual)	1,683,452	0.25	\$415,211	
	goldfish	<i>Carassius auratus</i>	9	5	Fish fingerlings (per individual)	351,262	0.76	\$268,219	
	koi carp	<i>Cyprinus carpio</i>	7	6	Fish fingerlings (per individual)	251,694	1.04	\$262,047	
	Murray cod	<i>Maccullochella peelii</i>	23	7	Fish fingerlings (per individual)	833,346	0.53	\$442,340	
					N/a	Fish fry (per individual)	200,000	0.10	\$20,000
	rainbow trout	<i>Oncorhynchus mykiss</i>	14	5	Fish fingerlings (per individual)	141,475	0.48	\$68,247	
					N/a	Fish fry (per individual)	314,000	0.03	\$12,000
	silver perch	<i>Bidyanus bidyanus</i>	46	16	Fish fingerlings (per individual)	1,142,062	0.29	\$326,231	
	Marine fish	silver bream	<i>Acanthopagrus australis</i>	5	N/a	Fish fingerlings (per individual)	7,000	1.00	\$7,000
sand whiting		<i>Sillago ciliata</i>	5	N/a	Fish fingerlings (per individual)	500	1.00	\$500	
mulloway		<i>Argyrosomus japonicus</i>	9	N/a	Fish fingerlings (per individual)	5,730	1.04	\$5,980	
*Other							\$1,000		
Total Value							\$2,092,767		

N/a = not available due to confidentiality e.g. fewer than 5 permits

*Other = Due to confidentiality these figures are included under this category. Species include Eastern freshwater cod *Maccullochella ikei* and rainbow trout (gold) *Oncorhynchus mykiss*.

Note that the "Average Price per Unit (\$)" has been rounded to the nearest cent.

Figure A

Comparative Graph: Non-oyster Aquaculture Production

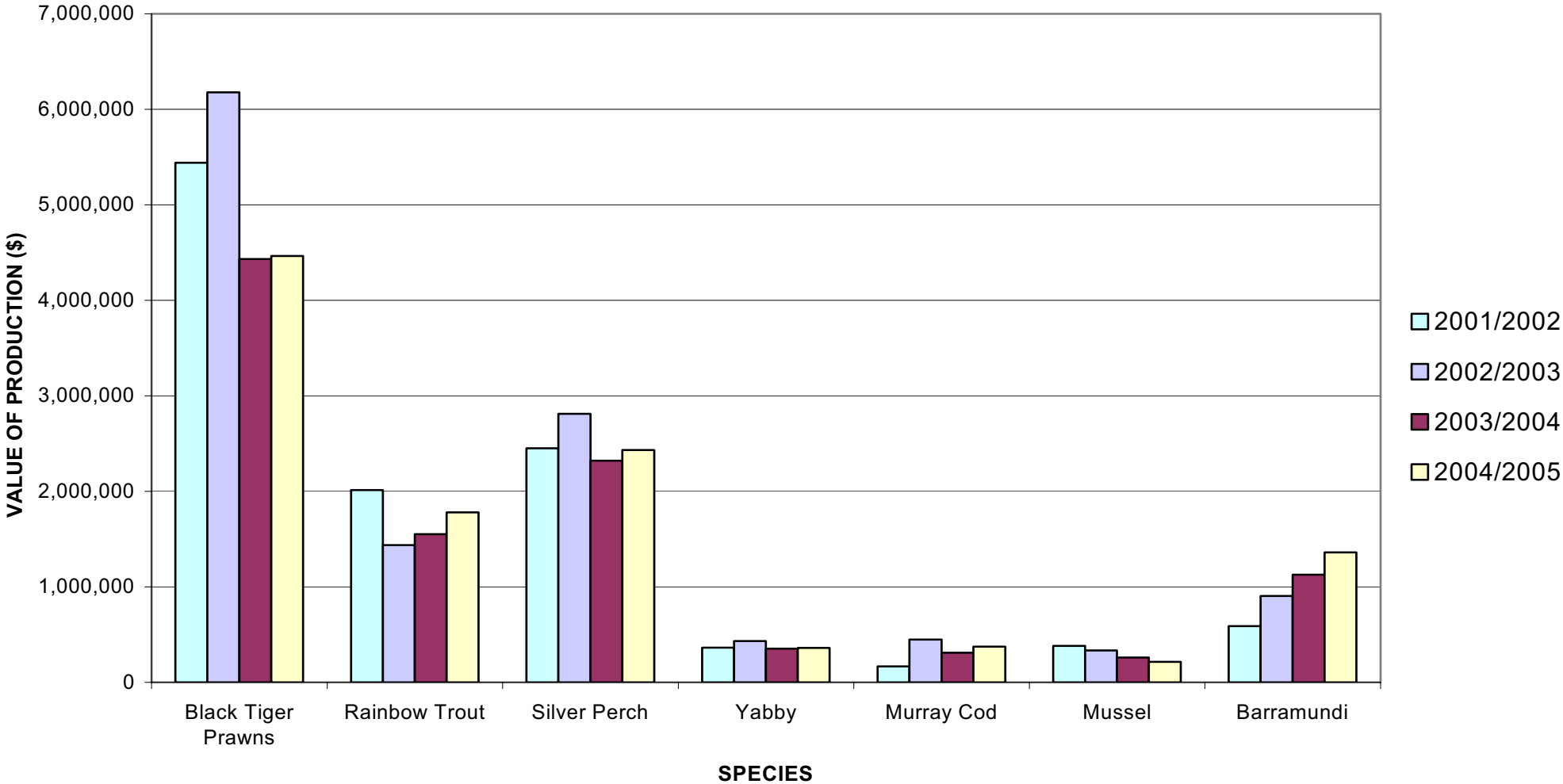


Table 4: Sydney Rock Oyster Production – 2001/2002, 2002/2003, 2003/2004 and 2004/2005 by Estuary

Estuary Name	Plate Grade Dozens				Bistro Grade Dozens				Bottle Grade Dozens				Total Dozens			
	01/02	02/03	03/04	04/05	01/02	02/03	03/04	04/05	01/02	02/03	03/04	04/05	01/02	02/03	03/04	04/05
Bellinger River	N/a	N/a	N/a	30,770	N/a	N/a	N/a	17,777	N/a	N/a	N/a	12,750	N/a	N/a	N/a	61,297
Nambucca River	41,195	15,616	37,042	21,997	36,010	36,422	41,781	23,030	25,527	9,410	12,908	19,630	102,732	61,448	91,731	64,657
Macleay River	21,503	27,589	24,028	20,392	45,351	38,812	47,396	35,502	106,081	116,116	82,741	75,104	172,935	182,517	154,165	130,998
Hastings River	52,513	60,787	46,990	50,570	80,317	116,491	96,875	116,535	208,771	200,847	219,407	133,150	341,601	378,125	363,272	300,255
Camden Haven	79,373	70,041	72,352	75,400	34,801	39,450	38,629	60,462	50,364	73,530	85,246	129,285	164,538	183,021	196,227	265,147
Manning River	69,200	84,024	80,535	77,957	66,993	79,578	53,129	62,324	48,774	77,017	72,683	107,670	184,967	240,619	206,347	247,951
Wallis Lake	538,850	462,020	555,432	490,654	649,499	630,500	591,663	633,423	1,110,244	1,245,191	1,286,303	1,098,017	2,298,593	2,337,711	2,433,398	2,222,094
Port Stephens	209,332	239,718	271,171	249,250	183,573	233,728	273,721	206,823	206,593	229,505	248,988	233,018	599,498	702,951	793,880	689,091
Hunter River	4,150	2,450	5,000	3,000	10,765	12,265	18,040	8,600	8,530	18,325	22,100	11,700	23,445	33,040	45,140	23,300
Brisbane Water	163,920	128,312	146,500	146,435	140,622	132,088	112,404	126,799	280,719	261,566	356,497	246,526	585,261	521,966	615,401	519,760
Hawkesbury River	278,300	230,255	151,820	71,462	278,700	235,540	250,987	119,220	518,995	426,935	443,454	265,348	1,075,995	892,730	846,261	456,030
Shoalhaven River	11,353	14,944	18,343	24,098	9,235	12,738	9,240	13,054	14,885	52,278	58,336	3,633	35,473	79,960	85,919	40,785
Crookhaven River	28,170	35,226	26,331	27,267	18,464	30,542	28,694	36,248	53,550	44,960	48,429	58,245	100,184	110,728	103,454	121,760
Clyde River	119,019	152,254	181,133	196,422	209,899	259,143	286,408	393,392	387,636	377,676	455,139	488,153	716,554	789,073	922,680	1,077,967
Tuross Lake	6,909	6,925	5,093	9,074	25,560	27,463	26,644	33,940	27,959	21,785	36,750	30,645	60,428	56,173	68,487	73,659
Wagonga Inlet	19,950	22,650	14,900	19,980	94,478	97,886	125,543	69,906	136,359	139,145	112,570	125,511	250,787	259,681	253,013	215,397
Wapengo Lake	9,649	6,777	8,197	8,604	42,149	34,227	42,921	44,435	26,427	26,950	34,091	27,300	78,225	67,954	85,209	80,339
Merimbula Lake	128,086	151,866	129,778	106,119	54,133	57,418	107,138	43,280	38,909	42,886	40,838	42,159	221,128	252,170	277,754	191,558
Pambula River	31,328	35,331	27,625	35,062	38,809	48,355	41,197	59,940	51,373	52,695	61,430	83,524	121,510	136,381	130,252	178,526
Wonboyn River	4,199	4,251	8,738	28,001	4,682	5,913	11,393	17,875	3,000	7,180	10,043	6,552	11,881	17,344	30,174	52,428
**Others	95,907	100,724	124,442	62,089	87,906	104,579	118,014	55,045	93,702	81,995	55,045	56,287	277,515	287,298	297,501	173,421
Totals	1,912,906	1,851,760	1,935,450	1,754,603	2,111,946	2,233,138	2,321,817	2,177,610	3,398,398	3,505,992	3,742,998	3,254,207	7,423,250	7,590,890	8,000,265	7,186,420

**Others not named for confidentiality include: Tweed River, Brunswick River, Richmond River, Clarence River, Sandon River, Woolli Woolli River, Patonga Creek, Botany Bay, Georges River, Conjola River, Burril Lake, Tomaga River, Moruya River, Wallaga Lake, Bermagui River, Nelson Lagoon, Bega River, Towamba River (Kiah).
N/a: Data not available for confidentiality reasons.

Table 5: Sydney Rock Oyster Sales by Estuary and Production Method

Estuary Name	Type of Cultivation	Plate Grade (Bags)	Plate Grade (Dozens)	Value (\$)	Bistro Grade (Bags)	Bistro Grade (Dozens)	Value (\$)	Bottle Grade (Bags)	Bottle Grade (Dozens)	Value (\$)	Total Bags	Total Dozens	Total Value (\$)
Bellinger River	Floating	2	150	\$1,002	2	200	\$994	1	150	\$522	5	500	\$2,518
	Raft/Pontoon	306	30,620	\$204,542	146	16,077	\$79,902	33	4,250	\$14,790	485	50,947	\$299,234
	Tray				14	1,500	\$7,455	64	8,350	\$29,058	78	9,850	\$36,513
Estuary Total		308	30,770	\$205,544	162	17,777	\$88,351	98	12,750	\$44,370	568	61,297	\$338,265
Nambucca River	Floating	37	3,700	\$24,716	14	1,540	\$7,654	23	2,990	\$10,405	74	8,230	\$42,775
	Raft/Pontoon	157	15,697	\$104,856	178	19,590	\$97,362	121	15,740	\$54,775	456	51,027	\$256,993
	Tray	26	2,600	\$17,368	17	1,900	\$9,443	7	900	\$3,132	50	5,400	\$29,943
Estuary Total		220	21,997	\$146,940	209	23,030	\$114,459	151	19,630	\$68,312	580	64,657	\$329,711
Macleay River	Baskets/Tumblers	42	4,227	\$28,236	95	10,402	\$51,698	208	27,092	\$94,280	345	41,721	\$174,214
	Floating	13	1,270	\$8,484	9	970	\$4,821	8	1,050	\$3,654	30	3,290	\$16,959
	Raft/Pontoon	18	1,759	\$11,750	26	2,908	\$14,453	78	10,105	\$35,165	122	14,772	\$61,368
	Tray	131	13,136	\$87,749	193	21,222	\$105,473	284	36,857	\$128,263	608	71,215	\$321,485
Estuary Total		204	20,392	\$136,219	323	35,502	\$176,445	578	75,104	\$261,362	1,105	130,998	\$574,026
Hastings River	Baskets/Tumblers	16	1,560	\$10,421	17	1,880	\$9,344	27	3,520	\$12,249	60	6,960	\$32,014
	Floating	14	1,443	\$9,639	42	4,575	\$22,738	39	5,060	\$17,609	95	11,078	\$49,986
	Raft/Pontoon	37	3,691	\$24,656	100	11,008	\$54,709	114	14,847	\$51,668	251	29,546	\$131,033
	Slats	8	750	\$5,011	38	4,290	\$21,321	9	1,105	\$3,845	55	6,145	\$30,177
	Stick	27	2,724	\$18,196	27	2,948	\$14,652				54	5,672	\$32,848
	Tray	404	40,402	\$269,885	835	91,834	\$456,415	835	108,618	\$377,991	2,074	240,854	\$1,104,291
Estuary Total		506	50,570	\$337,808	1,059	116,535	\$579,179	1,024	133,150	\$463,362	2,589	300,255	\$1,380,349
Camden Haven	Raft/Pontoon	405	40,500	\$270,540	234	25,730	\$127,878	852	110,730	\$385,341	1,491	176,960	\$783,759
	Tray	349	34,900	\$233,132	316	34,732	\$172,618	143	18,555	\$64,571	808	88,187	\$470,321
Estuary Total		754	75,400	\$503,672	550	60,462	\$300,496	995	129,285	\$449,912	2,299	265,147	\$1,254,080
Manning River	Baskets/Tumblers	39	3,900	\$26,052	46	5,050	\$25,099	13	1,650	\$5,742	98	10,600	\$56,893
	Dredge	55	5,500	\$36,740	7	742	\$3,688	11	1,365	\$4,750	73	7,607	\$45,178
	Long-line	76	7,550	\$50,434	19	2,090	\$10,387				95	9,640	\$60,821
	Raft/Pontoon	2	150	\$1,002	1	100	\$497				3	250	\$1,499
	Stick	1	40	\$267							1	40	\$267
	Tray	608	60,817	\$406,258	494	54,342	\$270,079	804	104,655	\$364,200	1,906	219,814	\$1,040,537
Estuary Total		780	77,957	\$520,753	567	62,324	\$309,750	828	107,670	\$374,692	2,175	247,951	\$1,205,195
Wallis Lake	Baskets/Tumblers				10	1,074	\$5,338	42	5,405	\$18,809	52	6,479	\$24,147
	Long-line	4	413	\$2,759	24	2,623	\$13,036	36	4,632	\$16,119	64	7,668	\$31,914
	Slats	8	800	\$5,344	42	4,667	\$23,195	85	11,000	\$38,280	135	16,467	\$66,819
	Stick	714	71,350	\$476,618	739	81,384	\$404,478	604	78,460	\$273,041	2,057	231,194	\$1,154,137

Estuary Name	Type of Cultivation	Plate Grade (Bags)	Plate Grade (Dozens)	Value (\$)	Bistro Grade (Bags)	Bistro Grade (Dozens)	Value (\$)	Bottle Grade (Bags)	Bottle Grade (Dozens)	Value (\$)	Total Bags	Total Dozens	Total Value (\$)
	Tray	4,180	418,091	\$2,792,847	4,942	543,675	\$2,702,065	7,680	998,520	\$3,474,850	16,802	1,960,286	\$8,969,762
Estuary Total		4,906	490,654	\$3,277,568	5,757	633,423	\$3,148,112	8,447	1,098,017	\$3,821,099	19,110	2,222,094	\$10,246,779
Port Stephens	Baskets/Tumblers	1	57	\$381	0	32	\$159	35	4,598	\$16,001	36	4,687	\$16,541
	Long-line	37	3,700	\$24,716	18	2,000	\$9,940	15	2,000	\$6,960	71	7,700	\$41,616
	Stick	57	5,740	\$38,343	106	11,710	\$58,198	418	54,400	\$189,312	582	71,850	\$285,854
	Tray	2,397	239,753	\$1,601,549	1,755	193,081	\$959,613	1,324	172,020	\$598,630	5,476	604,854	\$3,159,792
Estuary Total		2,492	249,250	\$1,664,989	1,879	206,823	\$1,027,910	1,792	233,018	\$810,903	6,163	689,091	\$3,503,803
Hunter River	Tray	30	3,000	\$20,040	78	8,600	\$42,742	90	11,700	\$40,716	198	23,300	\$103,498
Estuary Total		30	3,000	\$20,040	78	8,600	\$42,742	90	11,700	\$40,716	198	23,300	\$103,498
Brisbane Water	Baskets/Tumblers	11	1,143	\$7,636	51	5,555	\$27,608	189	24,553	\$85,444	251	31,251	\$120,687
	Floating	12	1,196	\$7,989	77	8,496	\$42,226	516	67,080	\$233,438	605	76,772	\$283,652
	Long-line				50	5,500	\$27,335	20	2,600	\$9,048	70	8,100	\$36,383
	Stick	28	2,750	\$18,370	54	5,888	\$29,263	11	1,410	\$4,907	93	10,048	\$52,540
	Tray	1,413	141,346	\$944,191	921	101,360	\$503,759	1,160	150,883	\$525,073	3,494	393,589	\$1,973,023
Estuary Total		1,464	146,435	\$978,186	1,153	126,799	\$630,191	1,896	246,526	\$857,910	4,513	519,760	\$2,466,287
Hawkesbury River	Stick	17	1,650	\$11,022	273	30,030	\$149,249	228	29,640	\$103,147	518	61,320	\$263,418
	Tray	698	69,812	\$466,344	811	89,190	\$443,274	1,813	235,708	\$820,264	3,322	394,710	\$1,729,882
Estuary Total		715	71,462	\$477,366	1,084	119,220	\$592,523	2,041	265,348	\$923,411	3,840	456,030	\$1,993,300
Shoalhaven River	Tray	241	24,098	\$160,975	119	13,054	\$64,878	28	3,633	\$12,643	388	40,785	\$238,496
Estuary Total		241	24,098	\$160,975	119	13,054	\$64,878	28	3,633	\$12,643	388	40,785	\$238,496
Crookhaven River	Baskets/Tumblers	41	4,147	\$27,702	73	7,950	\$39,512	78	10,083	\$35,089	192	22,180	\$102,303
	Dredge							74	9,730	\$33,860	74	9,730	\$33,860
	Tray	232	23,120	\$154,442	257	28,298	\$140,641	296	38,432	\$133,744	785	89,850	\$428,826
Estuary Total		273	27,267	\$182,144	330	36,248	\$180,153	448	58,245	\$202,693	1,051	121,760	\$564,990
Clyde River	Baskets/Tumblers	35	3,500	\$23,380	61	6,660	\$33,100	60	7,840	\$27,283	156	18,000	\$83,763
	Long-line	70	7,000	\$46,760	175	19,300	\$95,921	230	29,900	\$104,052	475	56,200	\$246,733
	Raft/Pontoon	20	2,000	\$13,360	30	3,300	\$16,401	30	3,900	\$13,572	80	9,200	\$43,333
	Stick	555	55,505	\$370,773	822	90,420	\$449,387	855	111,100	\$386,628	2,232	257,025	\$1,206,789
	Tray	1,283	128,417	\$857,826	2,487	273,712	\$1,360,349	2,581	335,413	\$1,167,237	6,351	737,542	\$3,385,411
Estuary Total		1,963	196,422	\$1,312,099	3,575	393,392	\$1,955,158	3,756	488,153	\$1,698,772	9,294	1,077,967	\$4,966,029
Tuross Lake	Baskets/Tumblers	40	4,025	\$26,887	174	19,180	\$95,325	154	20,050	\$69,774	368	43,255	\$191,986
	Stick	13	1,262	\$8,430	39	4,175	\$20,750	11	1,430	\$4,976	62	6,867	\$34,156
	Tray	38	3,787	\$25,297	96	10,585	\$52,607	71	9,165	\$31,895	205	23,537	\$109,799
Estuary Total		91	9,074	\$60,614	309	33,940	\$168,682	236	30,645	\$106,645	636	73,659	\$335,941
Wagonga Inlet	Baskets/Tumblers	6	580	\$3,874				65	8,451	\$29,409	71	9,031	\$33,284

Estuary Name	Type of Cultivation	Plate Grade (Bags)	Plate Grade (Dozens)	Value (\$)	Bistro Grade (Bags)	Bistro Grade (Dozens)	Value (\$)	Bottle Grade (Bags)	Bottle Grade (Dozens)	Value (\$)	Total Bags	Total Dozens	Total Value (\$)
	Stick	5	501	\$3,347							5	501	\$3,347
	Tray	189	18,899	\$126,245	636	69,906	\$347,433	900	117,060	\$407,369	1,725	205,865	\$881,047
Estuary Total		200	19,980	\$133,466	636	69,906	\$347,433	965	125,511	\$436,778	1,801	215,397	\$917,677
Wapengo Lake	Stick				31	3,375	\$16,774	44	5,680	\$19,766	75	9,055	\$36,540
	Tray	86	8,604	\$57,475	373	41,060	\$204,068	166	21,620	\$75,238	625	71,284	\$336,781
Estuary Total		86	8,604	\$57,475	404	44,435	\$220,842	210	27,300	\$95,004	700	80,339	\$373,321
Merimbula Lake	Floating	6	600	\$4,008	7	750	\$3,728				13	1,350	\$7,736
	Long-line	10	1,000	\$6,680	21	2,350	\$11,680	15	2,000	\$6,960	46	5,350	\$25,320
	Stick	400	40,000	\$267,200							400	40,000	\$267,200
	Tray	645	64,519	\$430,987	365	40,180	\$199,694	309	40,159	\$139,753	1,319	144,858	\$770,434
Estuary Total		1,061	106,119	\$708,875	393	43,280	\$215,102	324	42,159	\$146,713	1,778	191,558	\$1,070,690
Pambula River	Baskets/Tumblers	1	120	\$802	2	216	\$1,074	1	135	\$470	4	471	\$2,346
	Floating	1	120	\$801	2	216	\$1,074	1	135	\$470	4	471	\$2,345
	Raft/Pontoon				0	53	\$263	2	300	\$1,044	2	353	\$1,307
	Tray	349	34,822	\$232,611	541	59,455	\$295,491	638	82,954	\$288,680	1,528	177,231	\$816,782
Estuary Total		351	35,062	\$234,214	545	59,940	\$297,902	642	83,524	\$290,664	1,538	178,526	\$822,780
Wonboyn River	Baskets/Tumblers	5	538	\$3,594	3	276	\$1,372	2	309	\$1,075	10	1,123	\$6,041
	Floating	245	24,509	\$163,720	59	6,499	\$32,300	33	4,244	\$14,770	337	35,252	\$210,790
	Long-line	16	1,554	\$10,381	12	1,300	\$6,461	12	1,615	\$5,620	40	4,469	\$22,462
	Tray	14	1,400	\$9,352	89	9,800	\$48,706	3	384	\$1,336	106	11,584	\$59,394
Estuary Total		280	28,001	\$187,047	163	17,875	\$88,839	50	6,552	\$22,801	493	52,428	\$298,687
**Others	Baskets/Tumblers	10	1,000	\$6,680	27	2,979	\$14,806	19	2,464	\$8,574	56	6,443	\$30,060
	Floating				14	1,500	\$7,455	19	2,500	\$8,700	33	4,000	\$16,155
	Long-line	72	7,186	\$48,002	62	6,849	\$34,040	8	1,114	\$3,877	142	15,149	\$85,919
	Raft/Pontoon				3	275	\$1,367	1	65	\$226	4	340	\$1,593
	Stick				100	11,000	\$54,670	119	15,500	\$53,940	219	26,500	\$108,610
	Tray	539	53,903	\$360,072	295	32,442	\$161,237	267	34,644	\$120,561	1,101	120,989	\$641,870
Others Total		621	62,089	\$414,754	501	55,045	\$273,575	433	56,287	\$195,878	1,555	173,421	\$884,207
TOTALS		17,546	1,754,603	\$11,720,748	19,796	2,177,610	\$10,822,722	25,032	3,254,207	\$11,324,640	62,374	7,186,420	\$33,868,110

**Others not published for confidentiality include: Tweed River, Brunswick River, Richmond River, Clarence River, Sandon River, Wooli Wooli River, Patonga Creek, Botany Bay, Georges River, Conjola River, Burril Lake, Tomaga River, Moruya River, Wallaga River, Bermagui River, Nelson Lagoon, Bega River, Towamba River (Kiah).

Please Note: Due to rounding effect there may be some small variances in bag quantities and \$ value.

Table 6: Sydney Rock Oyster Sales by Market

Market Description	Plate Grade			Bistro Grade			Bottle Grade			Total		
	Bags	Dozens	Value (\$)	Bags	Dozens	Value (\$)	Bags	Dozens	Value (\$)	Bags	Dozens	Value (\$)
Export	0	0	\$0	8	880	\$4,374	0	0	\$0	8	880	\$4,374
Interstate	2,623	262,291	\$1,752,104	3,829	421,149	\$2,093,110	7,533	979,247	\$3,407,780	13,985	1,662,687	\$7,252,994
Local	4,049	404,887	\$2,704,645	4,326	475,957	\$2,365,507	4,526	588,480	\$2,047,910	12,901	1,469,324	\$7,118,062
NSW (Other than Sydney)	1,251	125,105	\$835,701	2,018	221,941	\$1,103,047	2,989	388,509	\$1,352,011	6,258	735,555	\$3,290,759
Sydney	9,623	962,320	\$6,428,298	9,615	1,057,683	\$5,256,684	9,984	1,297,971	\$4,516,939	29,222	3,317,974	\$16,201,921
Totals	17,546	1,754,603	\$11,720,748	19,796	2,177,610	\$10,822,722	25,032	3,254,207	\$11,324,640	62,374	7,186,420	\$33,868,110

Please Note: Due to rounding effect there may be some small variances in bag quantities and \$ value.

Table 7: Sydney Rock Oyster Sales by Production Method

Type of Cultivation	Plate Grade			Bistro Grade			Bottle Grade			Total		
	Bags	Dozens	Value(\$)	Bags	Dozens	Value(\$)	Bags	Dozens	Value(\$)	Bags	Dozens	Value (\$)
Baskets/Tumblers	248	24,797	\$165,644	557	61,254	\$304,432	893	116,150	\$404,202	1,698	202,201	\$874,278
Dredge	55	5,500	\$36,739	7	742	\$3,688	85	11,095	\$38,611	147	17,337	\$79,038
Floating	330	32,988	\$220,360	225	24,746	\$122,988	640	83,209	\$289,567	1,195	140,943	\$632,915
Long-line	284	28,403	\$189,732	382	42,012	\$208,800	337	43,861	\$152,636	1,003	114,276	\$551,168
Raft/Pontoon	944	94,417	\$630,705	719	79,041	\$392,834	1,230	159,937	\$556,581	2,893	333,395	\$1,580,120
Slats	16	1,550	\$10,355	81	8,957	\$44,516	93	12,105	\$42,125	190	22,612	\$96,996
Stick	1,815	181,522	\$1,212,567	2,190	240,930	\$1,197,422	2,290	297,620	\$1,035,718	6,295	720,072	\$3,445,707
Tray	13,854	1,385,426	\$9,254,646	15,635	1,719,928	\$8,548,042	19,464	2,530,230	\$8,805,200	48,953	5,635,584	\$26,607,888
Totals	17,546	1,754,603	\$11,720,748	19,796	2,177,610	\$10,822,722	25,032	3,254,207	\$11,324,640	62,374	7,186,420	\$33,868,110

Please Note: Due to rounding effect there may be some small variances in bag quantities and \$ value.

Table 8: Sydney Rock Oyster Sales by Permit Holders

Production Range	0 Bags No Prod Report Returned	0 Bags (nil prod)	<=25 Bags	>25 and <=50 Bags	>50 and <= 100 Bags	>100 and <=150 Bags	>150 and <= 250 Bags	>250 and <= 500 Bags	>500 and <=1000 Bags	>1000 Bags	Totals
Percentage of Permit Holders *	1	29	11 (16)	9 (12)	14 (20)	9 (13)	9 (12)	13 (19)	3 (5)	2 (3)	100
Number of Permit Holders	5	103	44	33	53	35	33	51	12	8	377
Quantity Produced (bags)	0	0	488	1,267	4,016	4,303	6,624	17,631	8,822	19,226	62,377
Quantity Produced (dozens)	0	0	57,128	142,824	464,158	485,981	758,189	2,035,777	1,024,581	2,217,782	7,186,420
Percentage of production (dozens)	0	0	0.8	2.1	6.4	7.1	10.7	28.2	14.0	30.7	100
Total Value (\$)			\$260,577	\$702,543	\$2,167,582	\$2,407,951	\$3,617,871	\$9,553,170	\$4,745,397	\$10,413,019	\$33,868,110

* Number in brackets is the percentage excluding nil production and reports not returned.

Figure B: Percentage of Oyster Permit Holders by Production Range

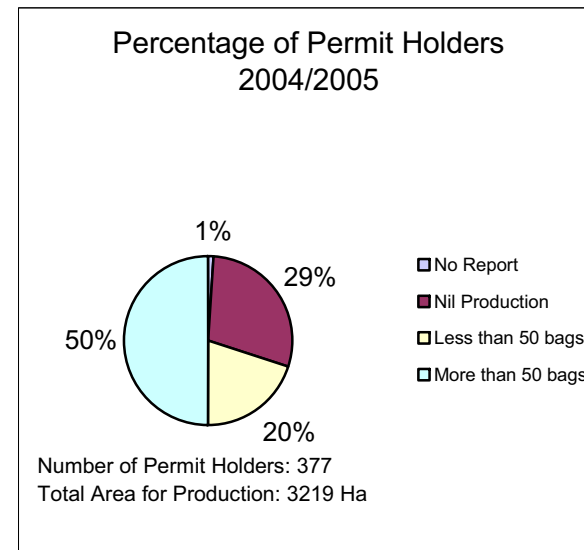
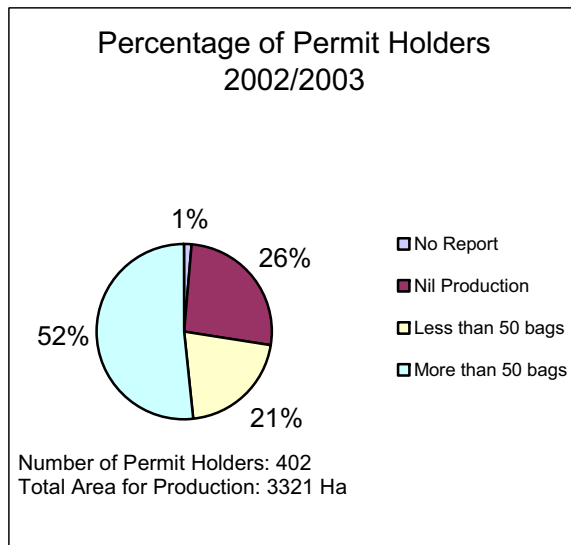
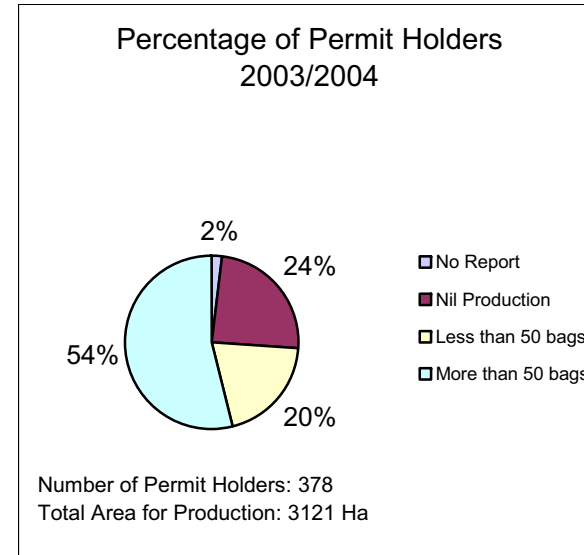
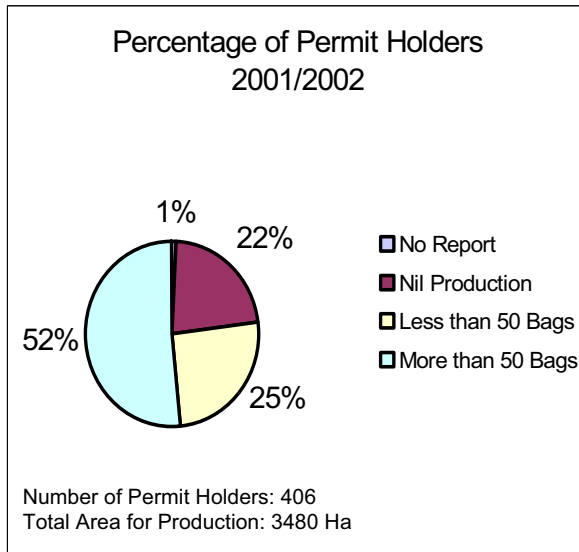


Table 9: Sydney Rock Oyster Sales by Estuary

Estuary	Plate Grade			Bistro Grade			Bottle Grade			Total		
	Bags	Dozens	Value(\$)	Bags	Dozens	Value (\$)	Bags	Dozens	Value (\$)	Bags	Dozens	Value (\$)
Bellinger River	308	30,770	\$205,544	162	17,777	\$88,351	98	12,750	\$44,370	568	61,297	\$338,265
Nambucca River	220	21,997	\$146,940	209	23,030	\$114,459	151	19,630	\$68,312	580	64,657	\$329,711
Macleay River	204	20,392	\$136,219	323	35,502	\$176,445	578	75,104	\$261,362	1,105	130,998	\$574,026
Hastings River	506	50,570	\$337,808	1,059	116,535	\$579,179	1,024	133,150	\$463,362	2,589	300,255	\$1,380,349
Camden Haven	754	75,400	\$503,672	550	60,462	\$300,496	995	129,285	\$449,912	2,299	265,147	\$1,254,080
Manning River	780	77,957	\$520,753	567	62,324	\$309,750	828	107,670	\$374,692	2,175	247,951	\$1,205,195
Wallis Lake	4,906	490,654	\$3,277,568	5,757	633,423	\$3,148,112	8,447	1,098,017	\$3,821,099	19,110	2,222,094	\$10,246,779
Port Stephens	2,492	249,250	\$1,664,989	1,879	206,823	\$1,027,910	1,792	233,018	\$810,903	6,163	689,091	\$3,503,803
Hunter River	30	3,000	\$20,040	78	8,600	\$42,742	90	11,700	\$40,716	198	23,300	\$103,498
Brisbane Water	1,464	146,435	\$978,186	1,153	126,799	\$630,191	1,896	246,526	\$857,910	4,513	519,760	\$2,466,287
Hawkesbury River	715	71,462	\$477,366	1,084	119,220	\$592,523	2,041	265,348	\$923,411	3,840	456,030	\$1,993,300
Shoalhaven River	241	24,098	\$160,975	119	13,054	\$64,878	28	3,633	\$12,643	388	40,785	\$238,496
Crookhaven River	273	27,267	\$182,144	330	36,248	\$180,153	448	58,245	\$202,693	1,051	121,760	\$564,990
Clyde River	1,963	196,422	\$1,312,099	3,575	393,392	\$1,955,158	3,756	488,153	\$1,698,772	9,294	1,077,967	\$4,966,029
Tuross Lake	91	9,074	\$60,614	309	33,940	\$168,682	236	30,645	\$106,645	636	73,659	\$335,941
Wagonga Inlet	200	19,980	\$133,466	636	69,906	\$347,433	965	125,511	\$436,778	1,801	215,397	\$917,677
Wapengo Lake	86	8,604	\$57,475	404	44,435	\$220,842	210	27,300	\$95,004	700	80,339	\$373,321
Merimbula Lake	1,061	106,119	\$708,875	393	43,280	\$215,102	324	42,159	\$146,713	1,778	191,558	\$1,070,690
Pambula River	351	35,062	\$234,214	545	59,940	\$297,902	642	83,524	\$290,664	1,538	178,526	\$822,780
Wonboyn River	280	28,001	\$187,047	163	17,875	\$88,839	50	6,552	\$22,801	493	52,428	\$298,687
** Others	621	62,089	\$414,754	501	55,045	\$273,575	433	56,287	\$195,878	1,555	173,421	\$884,207
Totals	17,546	1,754,603	\$11,720,748	19,796	2,177,610	\$10,822,722	25,032	3,254,207	\$11,324,640	62,374	7,186,420	\$33,868,110

**Others not published for confidentiality include: Tweed River, Brunswick River, Richmond River, Clarence River, Sandon River, Wooli Wooli River, Patonga Creek, Botany Bay, Georges River, Conjola River, Burril Lake, Tomaga River, Moruya River, Wallaga Lake, Bermagui River, Nelson Lagoon, Bega River, Towamba River (Kiah).

Please Note: Due to rounding effect there may be some small variances in bag quantities and \$ value.

Figure C: Comparative Graphs: Sydney Rock Oyster (SRO) Production

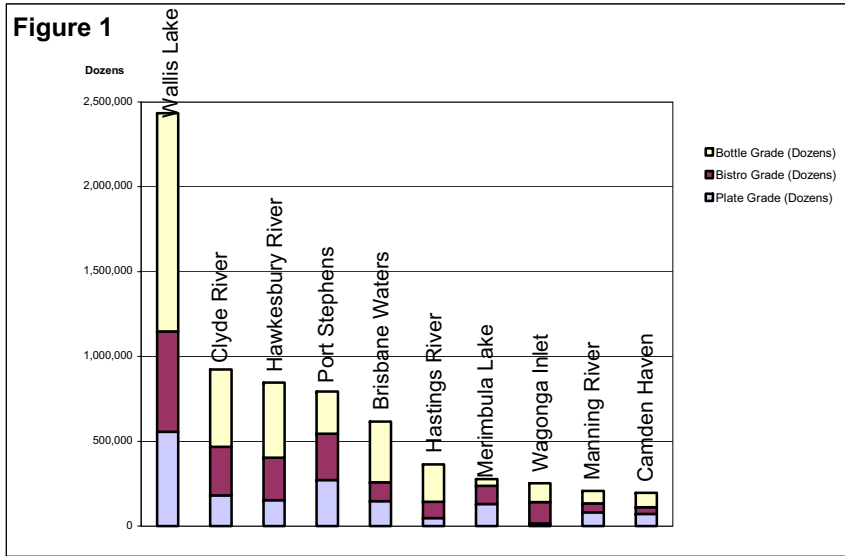


Figure 1: The ten most productive estuaries for the cultivation and sale of SRO in 2003/2004

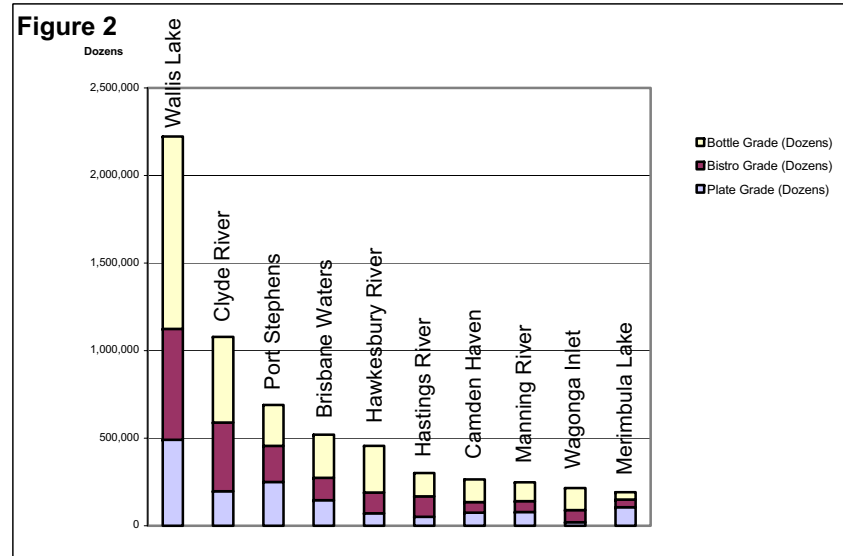


Figure 2: The ten most productive estuaries for cultivation and sale of SRO in 2004/2005

Figure 3: Value of plate, bistro and bottle/cocktail grade SRO production in 2001/2002, 2002/2003 and 2003/2004 compared to 2004/2005

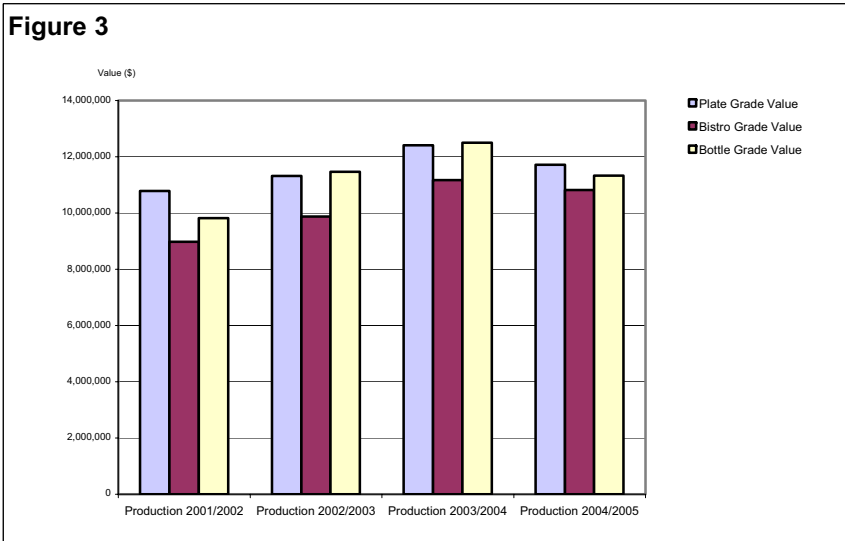


Figure 4: The quantity of plate, bistro and bottle/cocktail grade SRO production in 2001/2002, 2002/2003 and 2003/2004 compared to 2004/2005

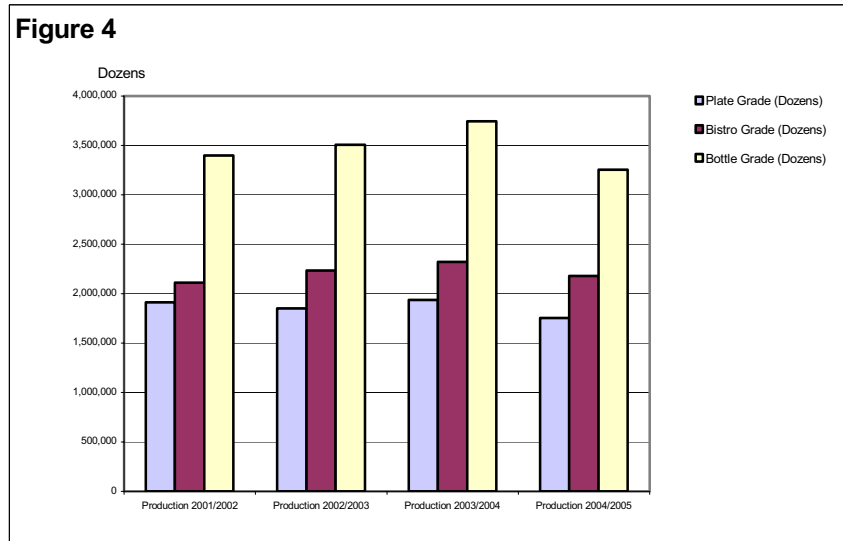


Table 10: Pacific Oyster Sales from Port Stephens

	Grade 1			Grade 2			Grade 3			Total		
	Bags	Dozens	Value (\$)	Bags	Dozens	Value (\$)	Bags	Dozens	Value (\$)	Bags	Dozens	Value (\$)
Total	2,045	155,427	\$929,453	1,176	141,134	\$691,557	586	87,848	\$298,683	3,807	384,409	\$1,919,693

Table 11: Pacific Oyster Sales by Production Method

Type of Cultivation	Grade 1			Grade 2			Grade 3			Total		
	Bags	Dozens	Value (\$)	Bags	Dozens	Value (\$)	Bags	Dozens	Value (\$)	Bags	Dozens	Value (\$)
Baskets/Tumblers	316	23,979	\$143,394	209	25,169	\$123,329	96	14,368	\$48,851	621	63,516	\$315,574
Long-line	673	51,142	\$305,829	271	32,486	\$159,181	146	21,951	\$74,633	1,090	105,579	\$539,643
Stick	5	400	\$2,392	3	300	\$1,470	2	300	\$1,020	10	1,000	\$4,882
Tray	1,051	79,906	\$477,838	693	83,179	\$407,577	342	51,229	\$174,179	2,086	214,314	\$1,059,594
Total	2,045	155,427	\$929,453	1,176	141,134	\$691,557	586	87,848	\$298,683	3,807	384,409	\$1,919,693

Table 12: Pacific Oyster Sales by Market

Market Description	Grade 1			Grade 2			Grade 3			Total		
	Bags	Dozens	Value (\$)	Bags	Dozens	Value (\$)	Bags	Dozens	Value (\$)	Bags	Dozens	Value (\$)
Interstate	1,456	110,673	\$661,825	750	89,958	\$440,794	286	42,842	\$145,663	2,492	243,473	\$1,248,282
Local	396	30,097	\$179,980	271	32,534	\$159,417	205	30,761	\$104,587	872	93,392	\$443,984
NSW (Other than Sydney)	120	9,089	\$54,351	110	13,212	\$64,739	80	12,040	\$40,936	310	34,341	\$160,026
Sydney	73	5,568	\$33,297	45	5,430	\$26,607	15	2,205	\$7,497	133	13,203	\$67,401
Total	2,045	155,427	929,453	1,176	141,134	691,557	586	87,848	\$298,683	3,807	384,409	\$1,919,693

Figure D: Comparative Graphs – Pacific Oyster Production

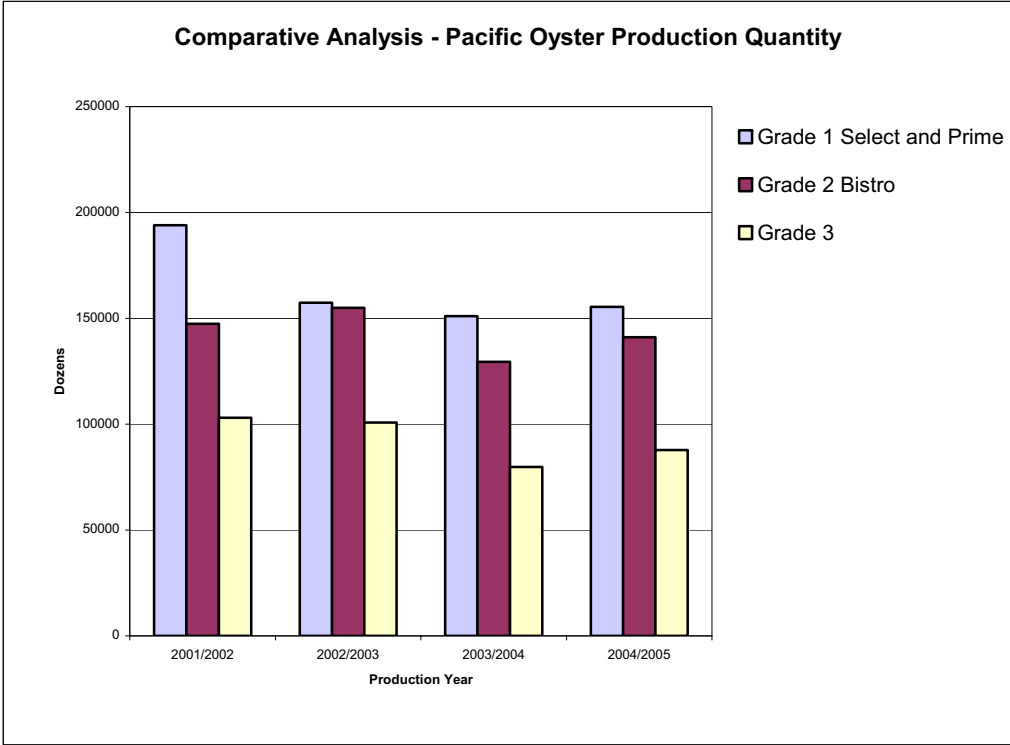
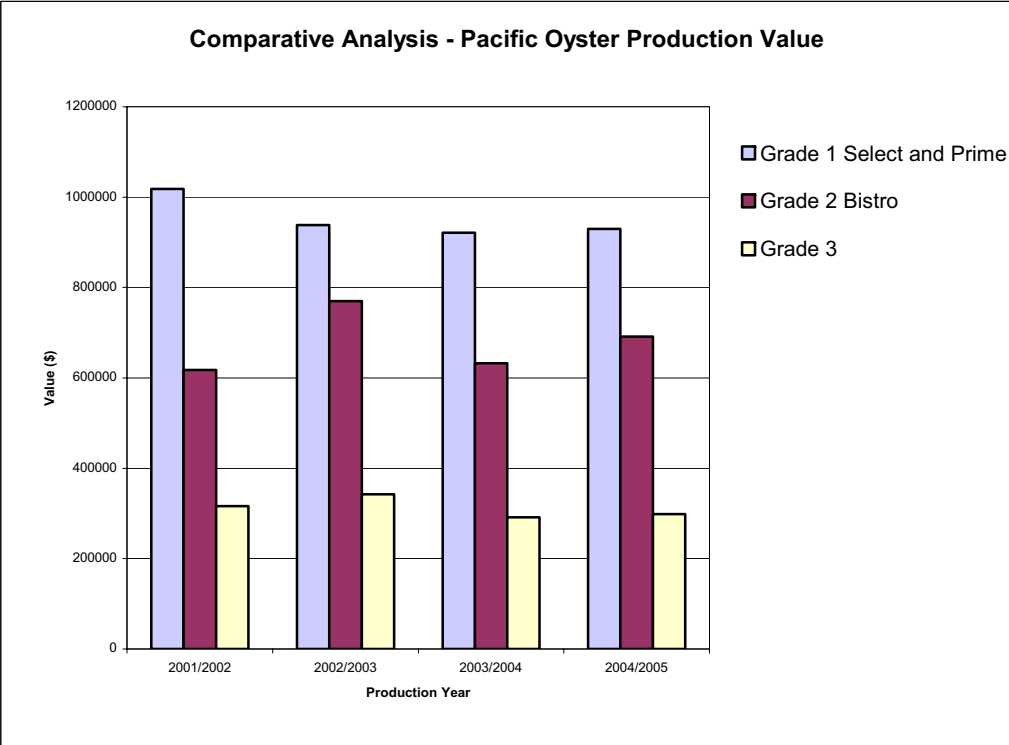


Table 13: Spat Production Value by Cultivation Method

Type of Cultivation	Large Spat (\$)	Medium Spat (\$)	Small Spat (\$)	Total Value (\$)
Hatchery Single Seed	\$105,790	\$70,016	\$207,702	\$383,508.00
Wild Caught Single Seed	\$682,689	\$318,448	\$313,800	\$1,314,937.00
Stick	\$102,920	\$64,720	\$5,000	\$172,640.00
Total Value	\$891,399.00	\$453,184.00	\$526,502.00	\$1,871,085.00

Note: Values include figures for Sydney rock oysters, Pacific oysters and flat oyster spat.

Appendix 1. Oyster Price and Weight Conversions

For the purposes of this report the following estimates have been developed on data supplied by permit holders and market sources:

Sydney Rock Oysters

1 bag of Plate Grade Oysters = 100 dozen @ a Farm Gate Price of \$668.00 per bag.

1 bag of Bistro Grade Oysters = 110 dozen @ a Farm Gate Price of \$546.70 per bag.

1 bag of Bottle/Cocktail Grade Oysters = 130 dozen @ a Farm Gate Price of \$452.40 per bag.

Pacific Oysters

1 bag of Grade 1 (Select and Prime) Pacific Oysters = 76 dozen @ a Farm Gate Price of \$454.48 per bag.

1 bag of Grade 2 (Bistro) Pacific Oysters = 120 dozen @ a Farm Gate Price of \$588.00 per bag.

1 bag of Grade 3 (Mini) Pacific Oysters = 150 dozen @ a Farm Gate Price of \$510.00 per bag.

Weight Conversions

An approximate conversion to production by weight for Sydney rock oysters can be made at the rate of 14 bags to the tonne.

ABOUT THIS PUBLICATION

Title	Aquaculture Production Report - 2004/2005
Publisher	NSW Department of Primary Industries – Port Stephens Fisheries Centre
International Standard Serial Number	ISSN 1444-840

Information presented in this publication is presented as a general representation of aquaculture production in NSW for the reporting period 1 July 2004 to 30 June 2005. All care has been taken to ensure the information is correct at the time of publication. NSW Department of Primary Industries does not guarantee the accuracy of the information provided by the permit holders.

This information should not be used in the development of business plans, investment proposals or other applications unless professional advice is sought.

Project Team Acknowledgements:

Project Manager:	Steve Boyd
Data:	Sarah-Jane Day, Pamela Gallagher, Steven Kay
Tables & Graphs:	Sarah-Jane Day