

FISHERIES MANAGEMENT ACT 1994

Section 8 and Section 11 Notifications – Fishing Closure for waters adjacent to Prawn Farms

I, GEOFF ALLAN, Deputy Director General Fisheries, with the delegated authority of the Minister for Primary Industries and the Secretary pursuant to sections 227 and 228 of the *Fisheries Management Act 1994* (“the Act”), make these notifications.

1. Notification of Revocation of Fishing Closure

Pursuant to section 11 of the Act, the ‘Section 8 Notification – Fishing Closure’ published in the New South Wales Government Gazette No. 140 of 29 December 2017 at pages 7927 - 7928 is revoked, as is any notification revived as a result of this revocation.

2. Notification of Prohibition on the taking of fish

Pursuant to section 8 of the Act, recreational fishers are prohibited from taking fish from waters specified in the Schedule below and shown on the maps in the Schedule.

Note: The purpose of this fishing closure is to prevent the introduction of White Spot Syndrome Virus.

3. Commencement and Duration

- (a) The notifications take effect on publication in the Gazette.
- (b) This fishing closure is effective until 22 June 2018.

4. Interpretation

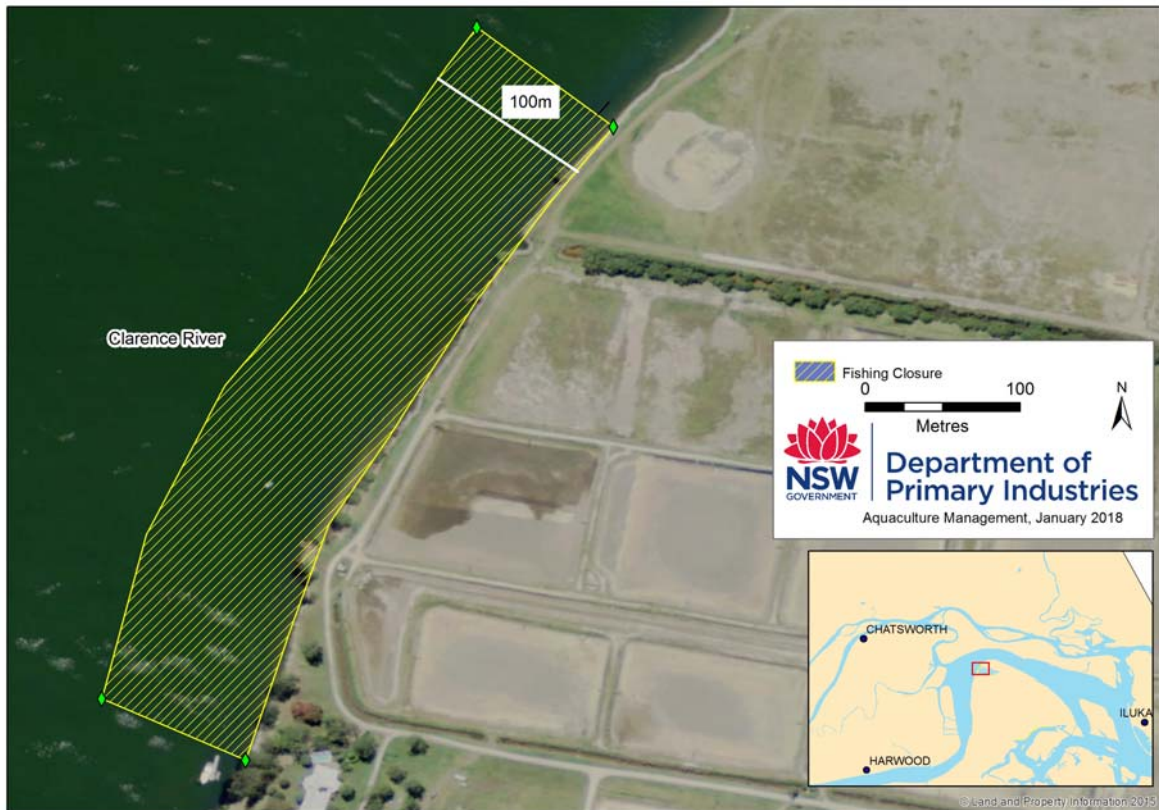
White Spot Syndrome Virus means Whispovirus (Family Nimaviridae).

Note: recreational fishers and take have the same meaning as in the Act.

Schedule

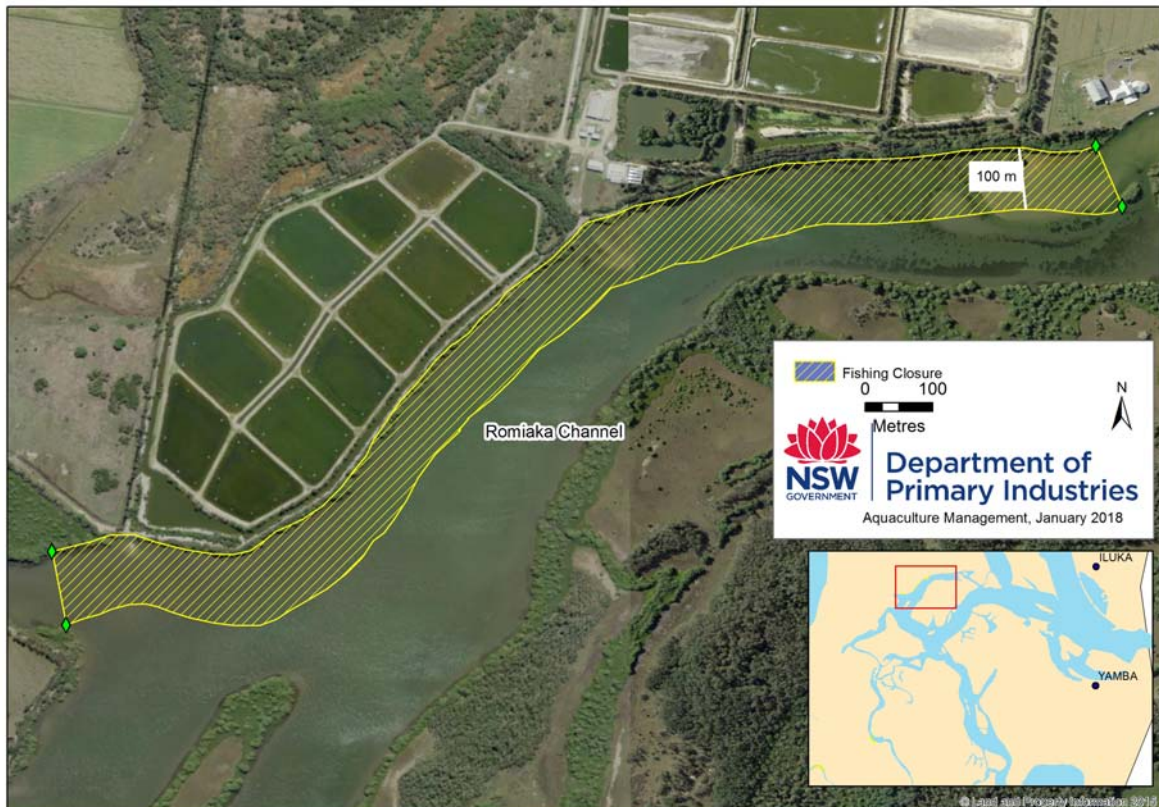
Waters adjacent to Tru Blu Prawn Farm – Palmers Island

The waters bounded by a line commencing at the point on the eastern bank of the Clarence River located at 29° 23.014' S / 153° 17.244' E approximately 10 m south of the jetty, and heading generally west-north-west 100m perpendicular offshore to the point located in the Clarence River at 29° 22.982' S / 153° 17.200' E, then heading generally south-west 100m from the shoreline along the mean high water mark to the point located in the Clarence River at 29° 23.219' S / 153° 17.061' E, then heading generally south-east to the point located on the eastern bank of the Clarence River at 29° 23.240' S / 153° 17.111' E, then heading generally north-north-east along the mean high water mark to the point of commencement.



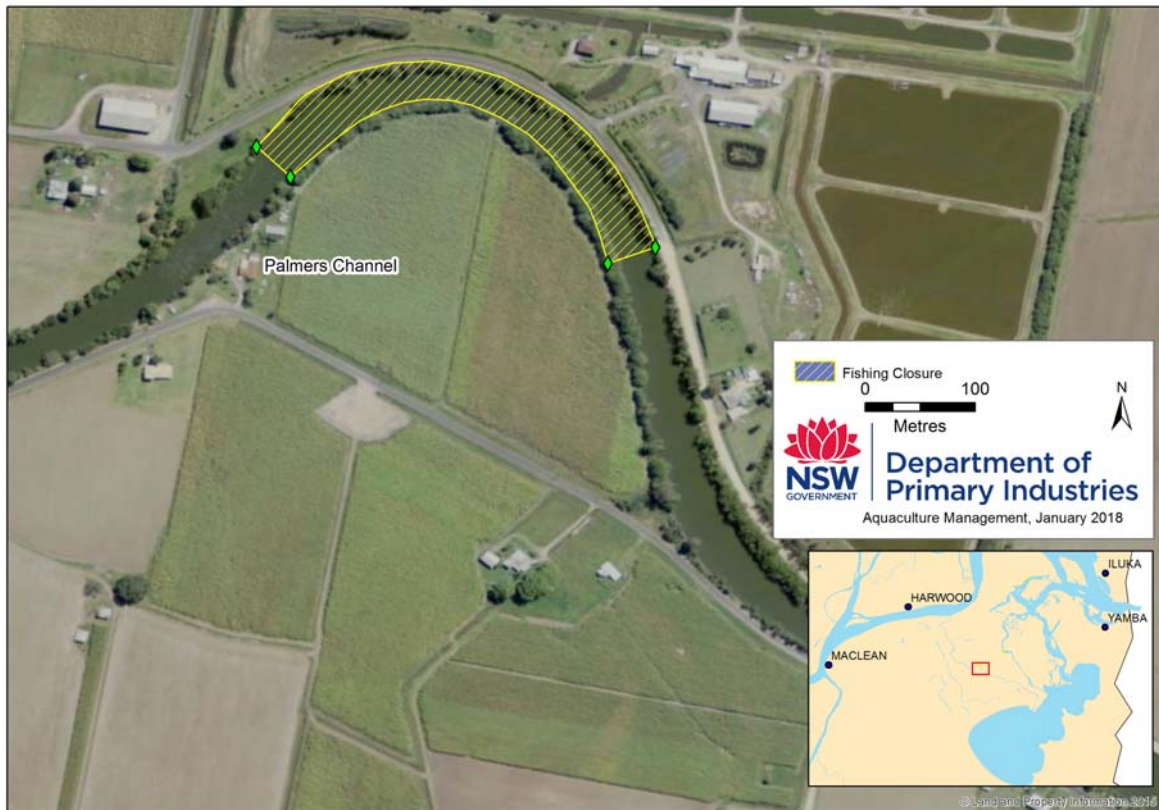
Waters adjacent to the prawn farm operated by Fortune Pty Ltd – Palmers Island

The waters bounded by a line commencing at the point on the north-western bank of the Romiaka Channel located at $29^{\circ} 24.513' \text{ S} / 153^{\circ} 18.943' \text{ E}$, and heading generally south-east 100 m perpendicular offshore in line with the small island located in the Romiaka Channel at $29^{\circ} 24.568' \text{ S} / 153^{\circ} 18.945' \text{ E}$, then heading generally west then south-west 100m from the shoreline along the mean high water mark to the point located on the outer-most edge of the mangrove forest adjacent to the western bank of the Romiaka Channel at $29^{\circ} 24.897' \text{ S} / 153^{\circ} 18.119' \text{ E}$, then heading generally north to the southern edge of the mangrove forest located adjacent to the northern bank of the Romiaka Channel at point $29^{\circ} 24.838' \text{ S} / 153^{\circ} 18.108' \text{ E}$ then heading generally north-east along the mean high water mark to the point of commencement.

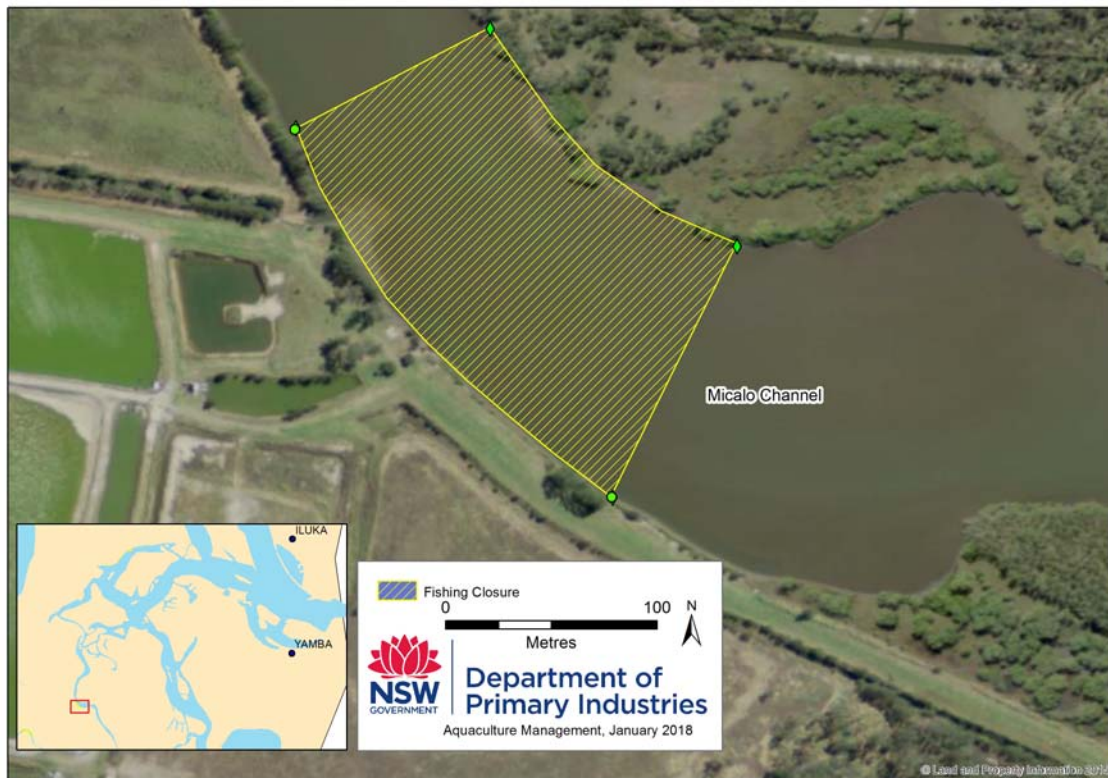


Waters adjacent to the prawn farm operated by Ausfarm Aquaculture Pty Ltd – Palmers Island

Part A: The waters bounded by a line commencing at the point on northern bank of Palmers Channel located at 29° 27.493' S / 153° 16.787' E, then heading generally south-south-east to the point located on the southern bank of Palmers Channel at 29° 27.507' S / 153° 16.804' E, then following the shoreline generally east along the mean high water mark to the point located on the southern bank of Palmers Channel at 29° 27.550' S / 153° 16.960' E, then heading generally north-east to the northern bank of Palmers Channel located at 29° 27.542' S / 153° 16.983' E to encompass the whole of the waters between mean high water mark on both banks of Palmers Channel.



Part B: The waters bounded by a line commencing at the point on western bank of Micalo Channel located at 29° 27.018' S / 153° 17.674' E, then heading generally north-east to the point located on the eastern bank of Micalo Channel at 29° 26.993' S / 153° 17.724' E, then following the shoreline generally south along the mean high water mark to the point located on the eastern bank of Micalo Channel at 29° 27.048' S / 153° 17.787' E, then heading generally south-west to the western bank of Micalo Channel located at 29° 27.113' S / 153° 17.755' E to encompass the whole of the waters between mean high water mark on both banks of Micalo Channel.



In this schedule, latitude and longitude coordinates are in WGS84 datum.

Dated this 18th day of January 2018.

A handwritten signature in black ink, appearing to read 'G. Allan'.

DR GEOFF ALLAN
Deputy Director General DPI Fisheries
Department of Primary Industries
(an office within the Department of Industry)