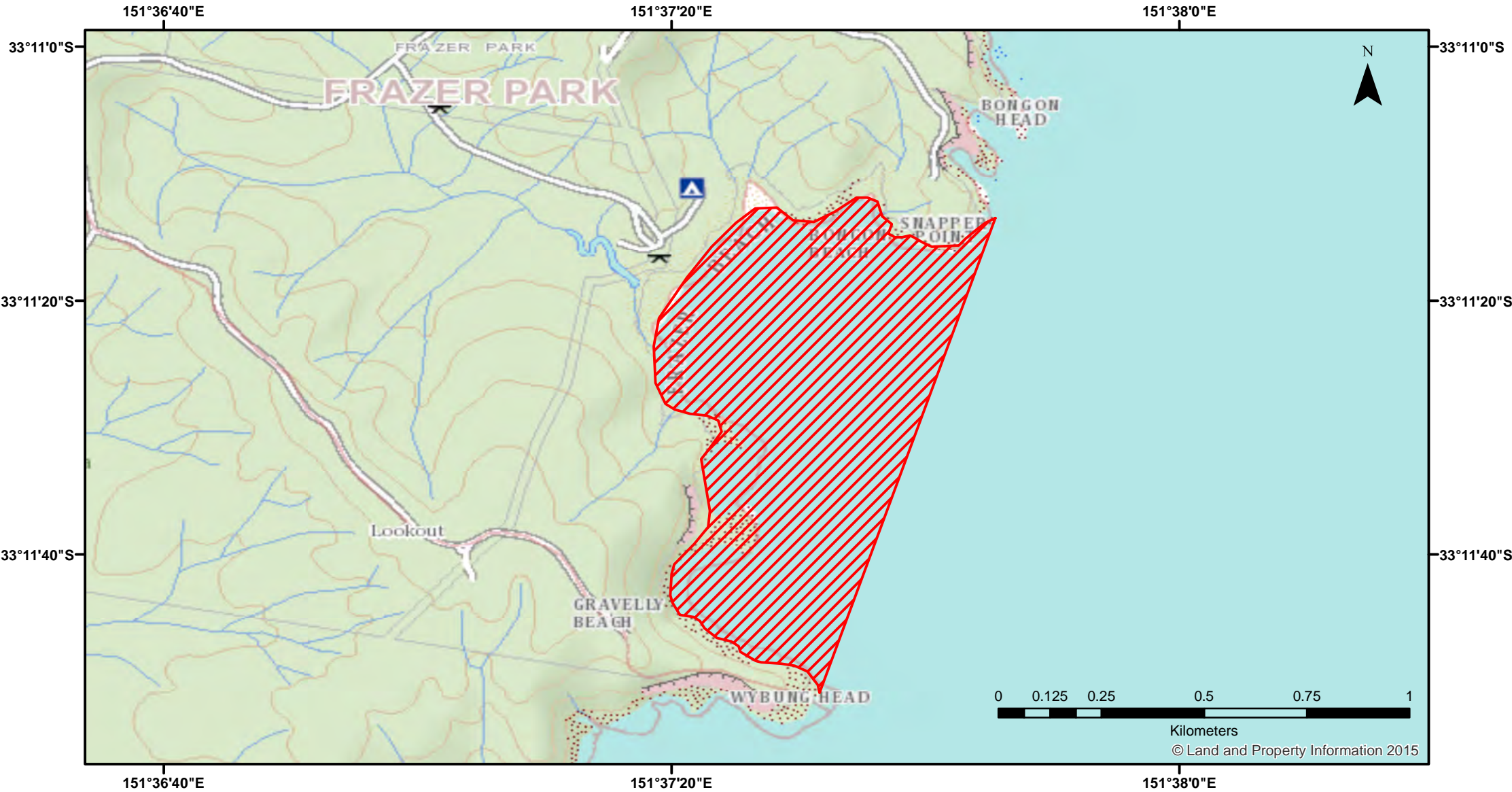


Ocean Hauling - Frazer Beach



Closure

NSW DPI 9 February 2018
Coordinates are shown in WGS84

Notice to Map Users
Additional closures may apply. Primary Industries and its employees disclaim all liability for any actions or consequences arising from the use of this information. This map is not to be used for navigational purposes as it is indicative only and not guaranteed to be free of error or omission.

Closed Waters
The whole of the waters adjacent to the shoreline between the easternmost point of Snapper Point and the easternmost point of Wybung Head. The area includes Bongon Beach, Frazer Beach, Gravelly Beach and Deadmans Beach.



© Land and Property Information 2015