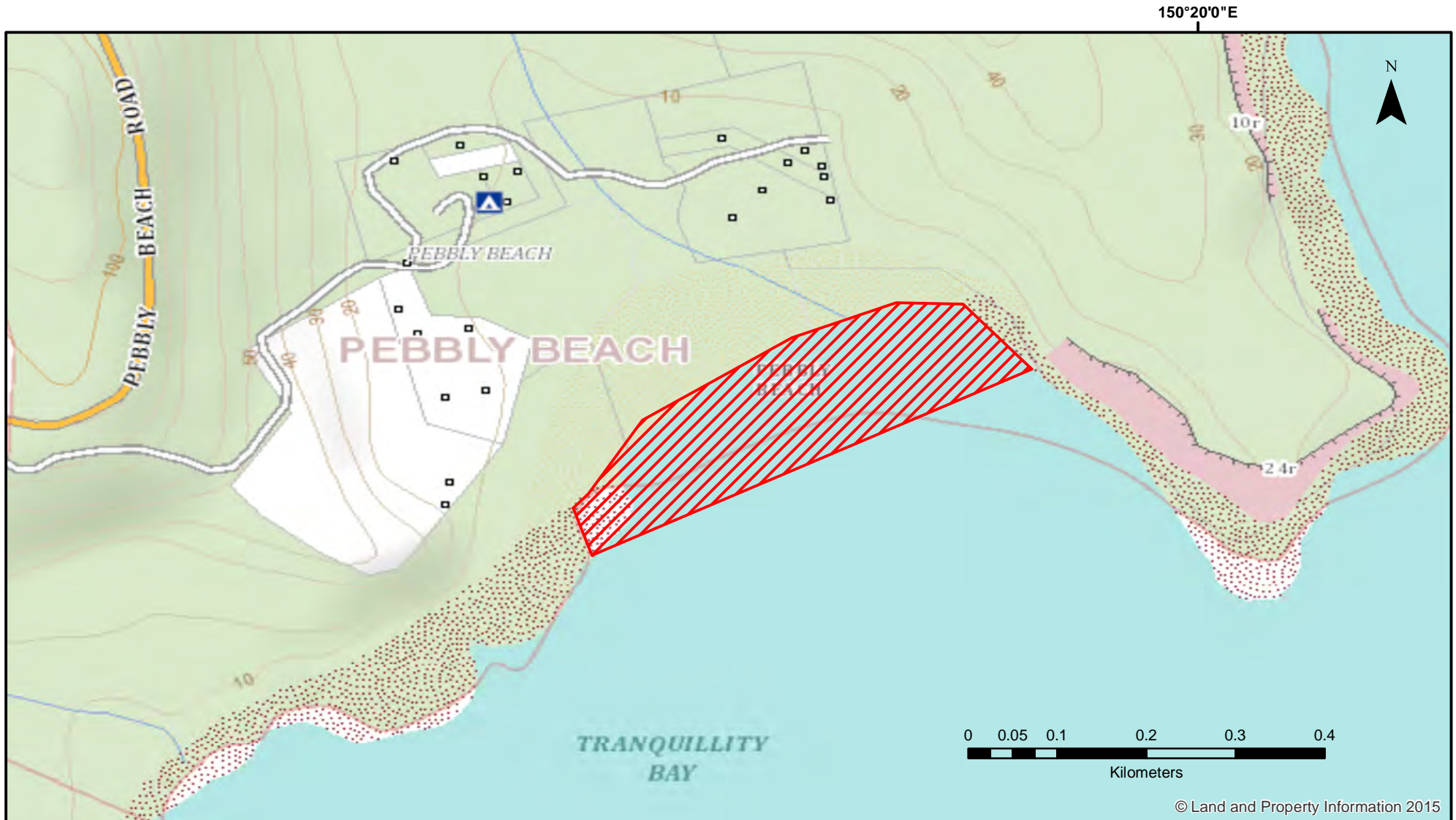



# Ocean Hauling - Pebbly Beach



 Closure  
 NSW DPI 9 February 2018  
 Coordinates are shown in WGS84

Notice to Map Users  
 Additional closures may apply. Primary Industries and its employees disclaim all liability for any actions or consequences arising from the use of this information. This map is not to be used for navigational purposes as it is indicative only and not guaranteed to be free of error or omission.

**Closed Waters**  
 The whole of the waters adjacent to Pebbly Beach in Murramarang National Park.

© Land and Property Information 2015  
 150°20'0"E

