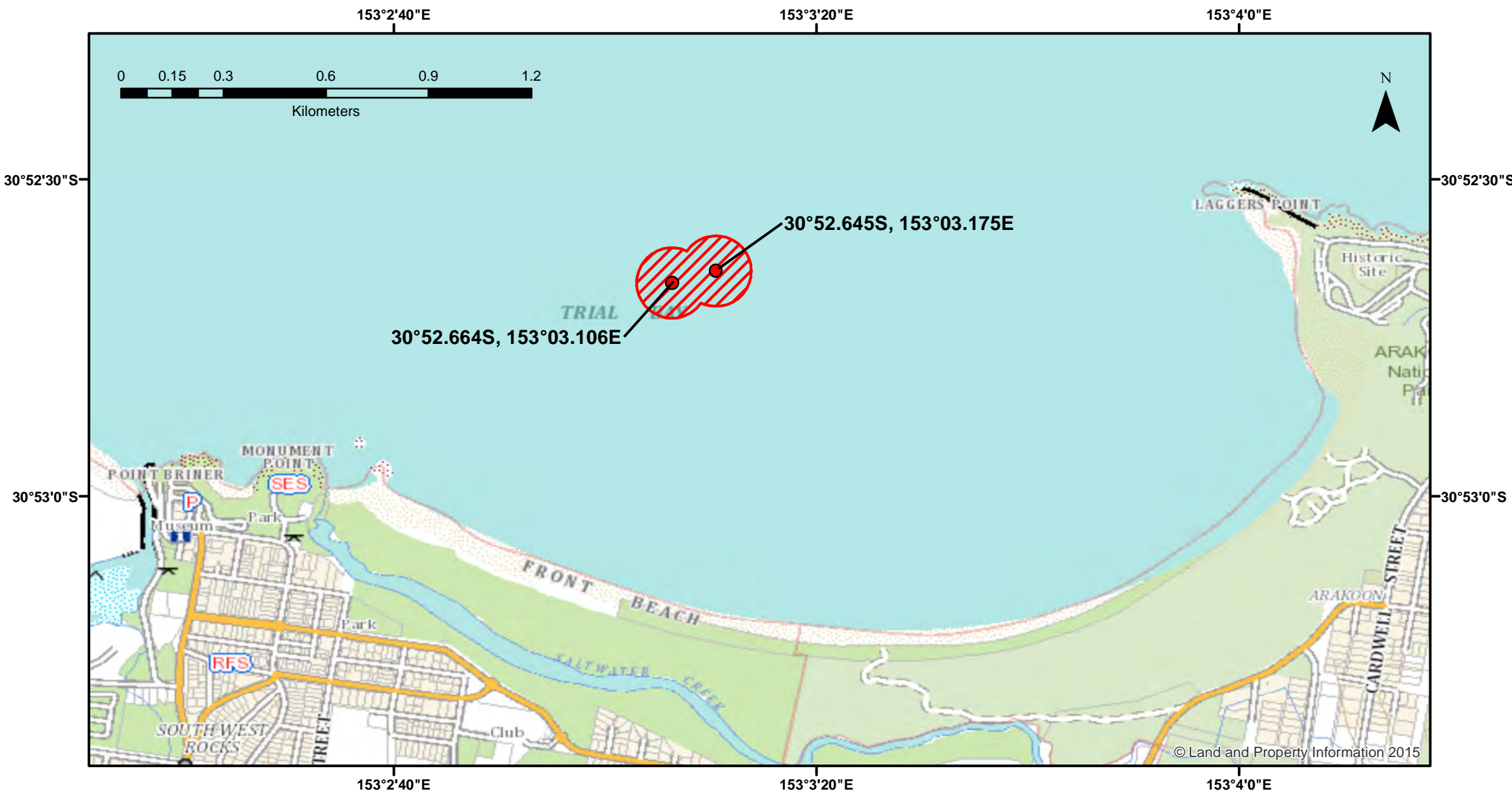


Ocean Hauling - Trial Bay South West Rocks



Closure

NSW DPI 13 February 2018
Coordinates are shown in WGS84

Notice to Map Users
Additional closures may apply. Primary Industries and its employees disclaim all liability for any actions or consequences arising from the use of this information. This map is not to be used for navigational purposes as it is indicative only and not guaranteed to be free of error or omission.

Closed Waters

The whole of the waters within a 100 metre radius of the following points at Trial Bay: 30°52.645S, 153°03.175E and 30°52.664 S, 153°03.106E which are ordinarily marked by a Roads and Maritime Services buoy and a Department of Primary Industries buoy.

Prohibited Methods - Any method involving the use of the following:

- (a) a purse seine net,
- (b) a pilchard, anchovy and bait net (hauling).

