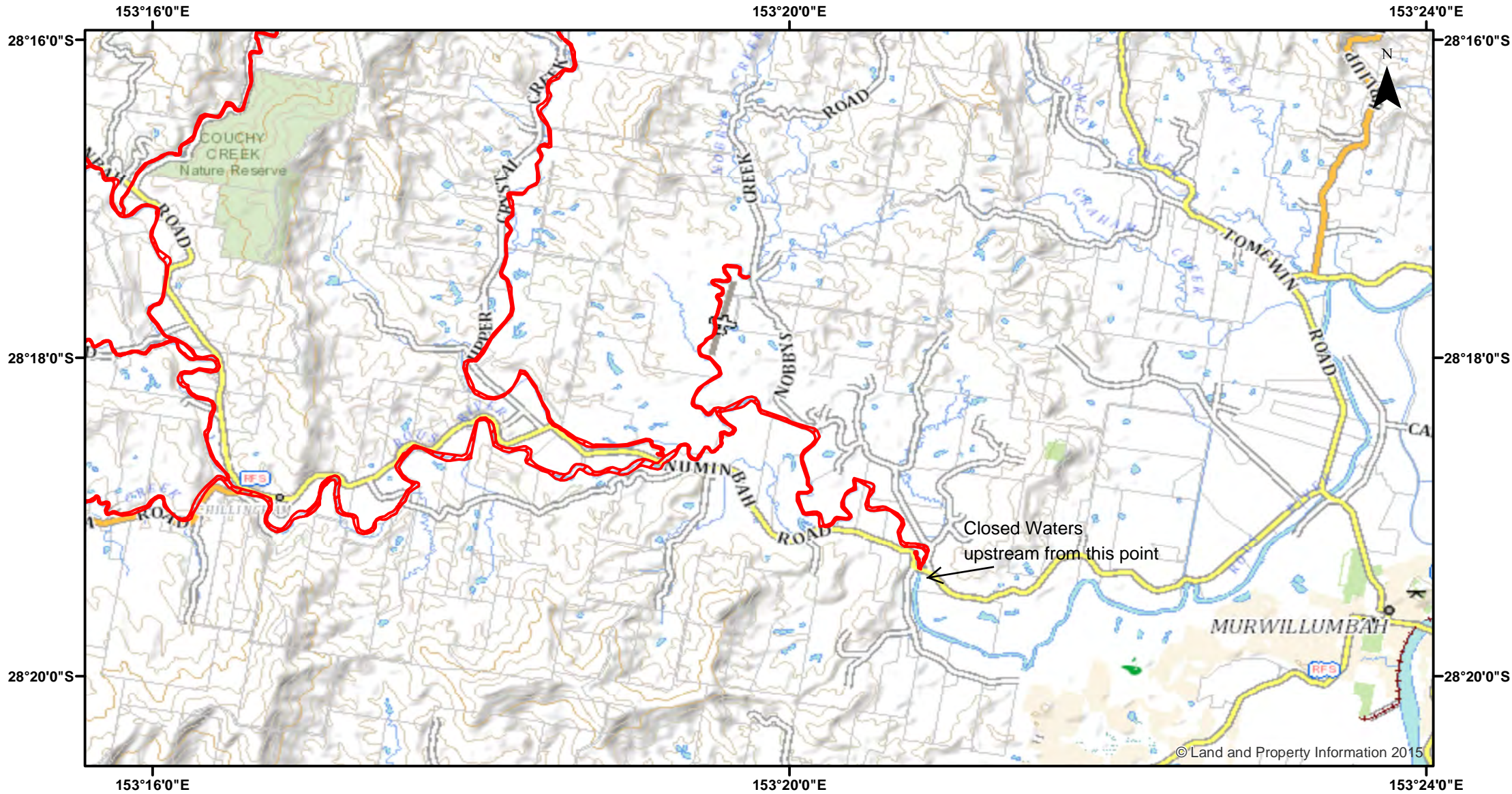


Rous River



Closure

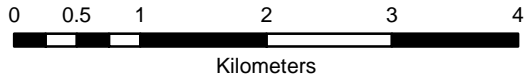
NSW DPI 13 April 2018

Coordinates are shown in WGS84

Notice to Map Users
 Additional closures may apply. Primary Industries and its employees disclaim all liability for any actions or consequences arising from the use of this information. This map is not to be used for navigational purposes as it is indicative only and not guaranteed to be free of error or omission.

Closed Waters
 The whole of the waters of Rous River and its tributaries, from Boat Harbour Bridge upstream to its source.

Prohibited Method
 Net or trap, other than a landing net.



© Land and Property Information 2015