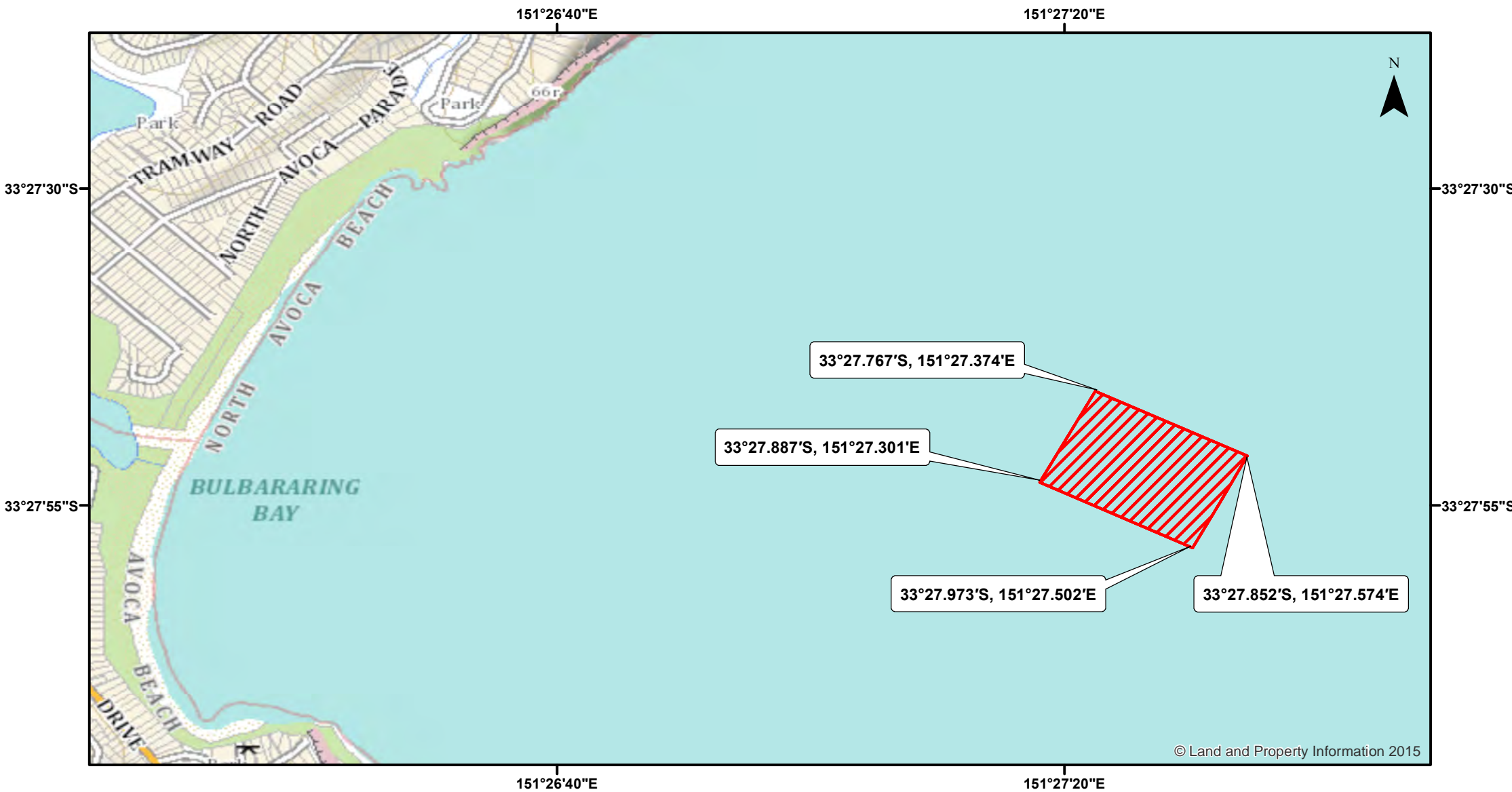


Ex-HMAS Adelaide Reserve



33°27.767'S, 151°27.374'E

33°27.887'S, 151°27.301'E

33°27.973'S, 151°27.502'E

33°27.852'S, 151°27.574'E

© Land and Property Information 2015



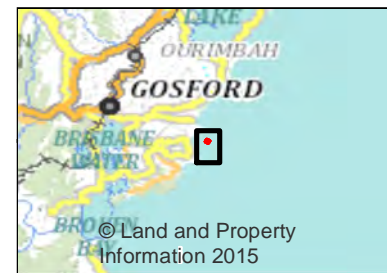
Closure

NSW DPI 12 March 2018
Coordinates are shown in WGS84

Notice to Map Users
Additional closures may apply. Primary Industries and its employees disclaim all liability for any actions or consequences arising from the use of this information. This map is not to be used for navigational purposes as it is indicative only and not guaranteed to be free of error or omission.

Closed Waters
The whole of the waters enclosed by the following coordinates:
33°27.887' S and 151°27.301' E,
33°27.767' S and 151°27.374' E,
33°27.973' S and 151°27.502' E,
33°27.852' S and 151°27.574' E.

Prohibited Method
Any method



© Land and Property Information 2015