

# Port Hacking - Simpson's Bay Beach to Costens Point

151°6'40"E

151°7'30"E

151°8'20"E

34°4'5"S

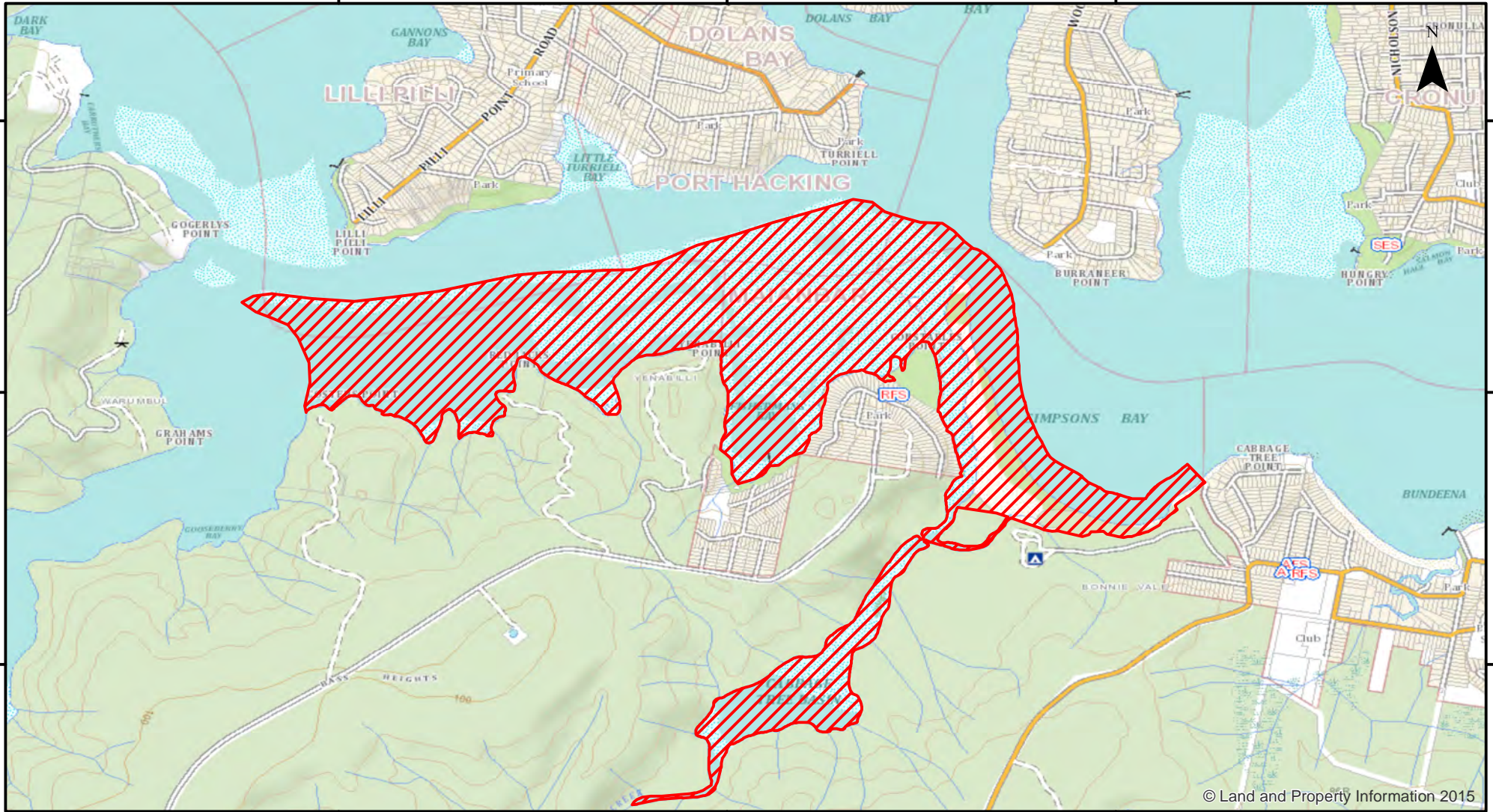
34°4'5"S

34°4'40"S

34°4'40"S

34°5'15"S

34°5'15"S



151°6'40"E

151°7'30"E

151°8'20"E



Closure

NSW DPI 25 May 2018  
Coordinates are shown in WGS84

**Closed Waters**  
The whole of the foreshore of Port Hacking from the east end of Simpson's Bay Beach generally west to the westernmost end of Costens Point (including the foreshore extending from the mean high water mark, to 200 metres horizontally seaward from the mean low water mark).

**Prohibited Species**  
All species of shellfish (Class: GASTROPODA / BIVALVIA).



Notice to Map Users  
Additional closures may apply. Primary Industries and its employees disclaim all liability for any actions or consequences arising from the use of this information. This map is not to be used for navigational purposes as it is indicative only and not guaranteed to be free of error or omission.

0 0.2 0.4 0.8 1.2 1.6



Kilometers

© Land and Property Information 2015