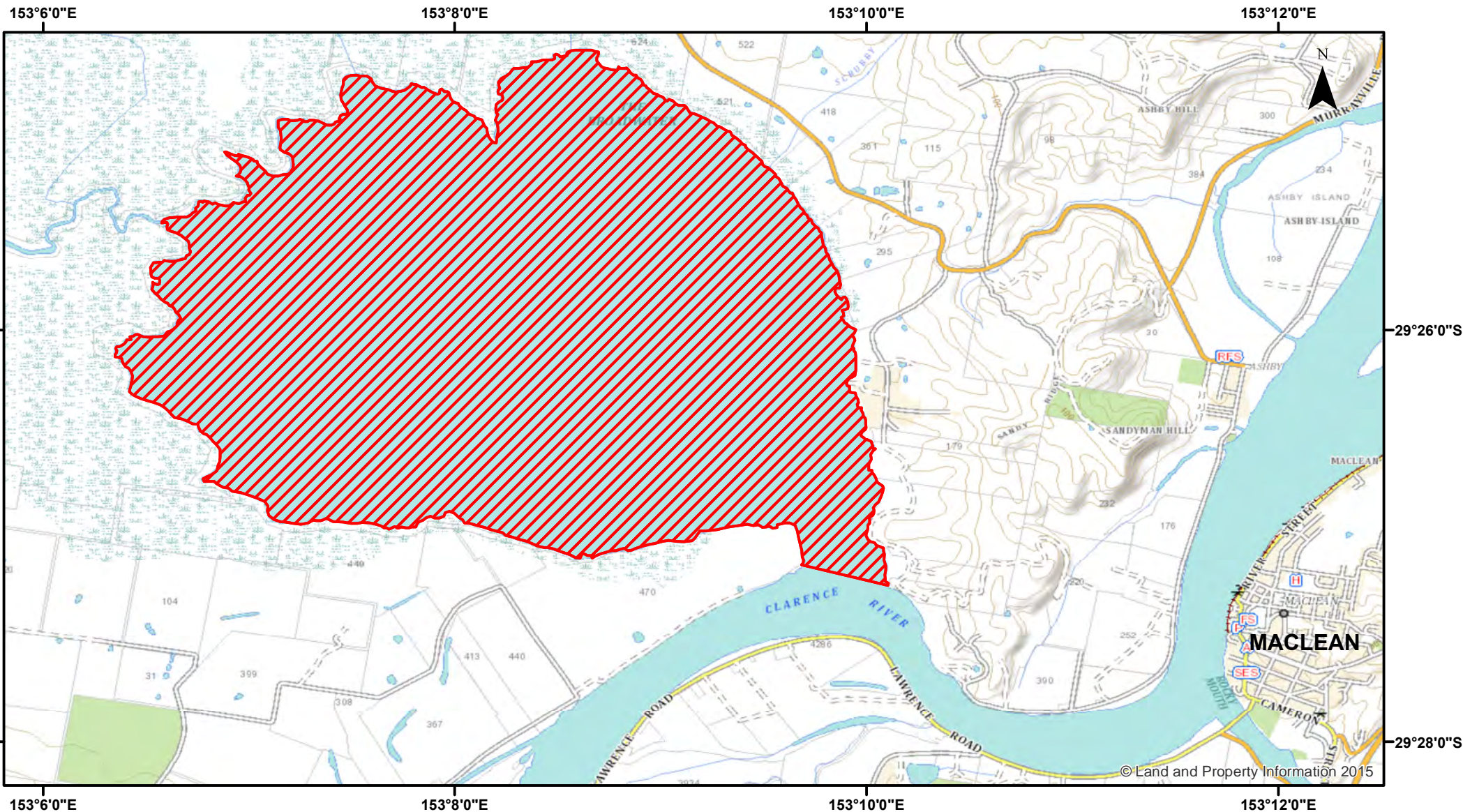


Estuary Prawn Trawl - Broadwater



Closure

NSW DPI 12 December 2017

Coordinates are shown in WGS84

Notice to Map Users

Additional closures may apply. Primary Industries and its employees disclaim all liability for any actions or consequences arising from the use of this information. This map is not to be used for navigational purposes as it is indicative only and not guaranteed to be free of error or omission.

Closed Waters

The whole of the waters of the Broadwater north and north west of a line drawn from a post marked FD1 on the foreshore of Emerald's Point generally west to a post marked FD2 located on Neddy's Point.

0 0.45 0.9 1.8 2.7 3.6

Kilometers

