

Estuary Prawn Trawl

Cowan Creek, Smiths Creek, Coal and Candle Creek, Jerusalem Bay and America Bay

151°6'0"E

151°12'0"E

151°18'0"E

33°36'0"S

33°36'0"S

33°39'0"S

33°39'0"S

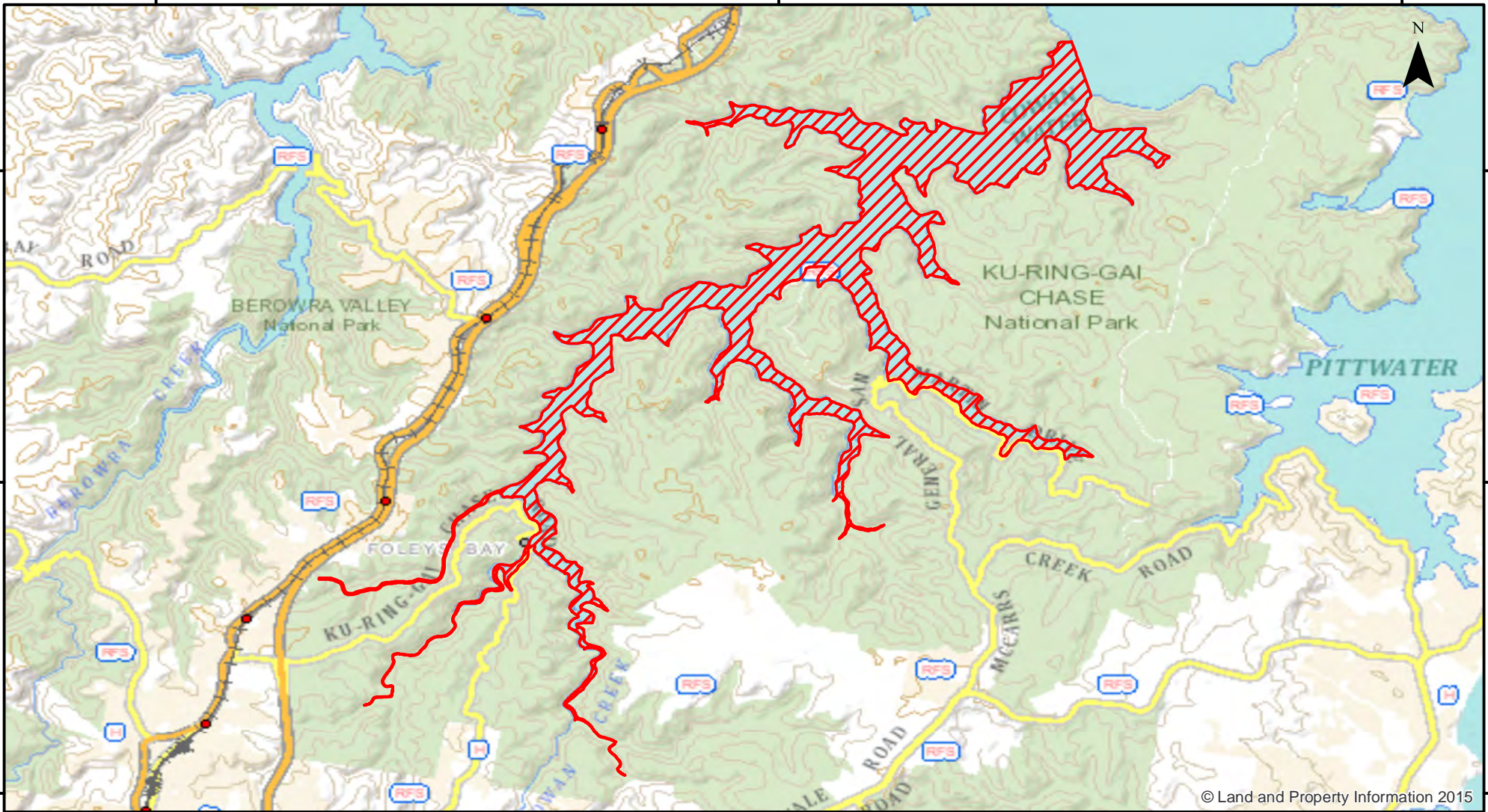
33°42'0"S

33°42'0"S

151°6'0"E

151°12'0"E

151°18'0"E



© Land and Property Information 2015

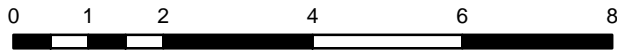


Closure

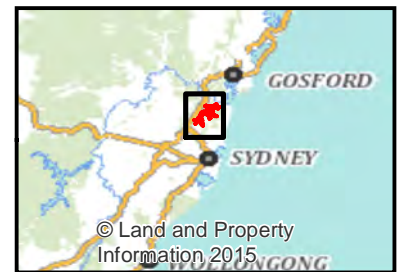
NSW DPI 19 December 2017
Coordinates are shown in WGS84

Notice to Map Users
Additional closures may apply. Primary Industries and its employees disclaim all liability for any actions or consequences arising from the use of this information. This map is not to be used for navigational purposes as it is indicative only and not guaranteed to be free of error or omission.

Closed Waters
The whole of the waters of Cowan Creek and Smiths Creek south west of a line drawn between the north eastern most corner of Eleanor Bluffs and the north western most corner of Challenger Head adjacent to the Port Hand navigation marker on Challenger Head.



Kilometers



© Land and Property Information 2015