

Ocean Hauling - Woody Bay

153°22'10"E

153°22'20"E

153°22'30"E

29°21'45"S

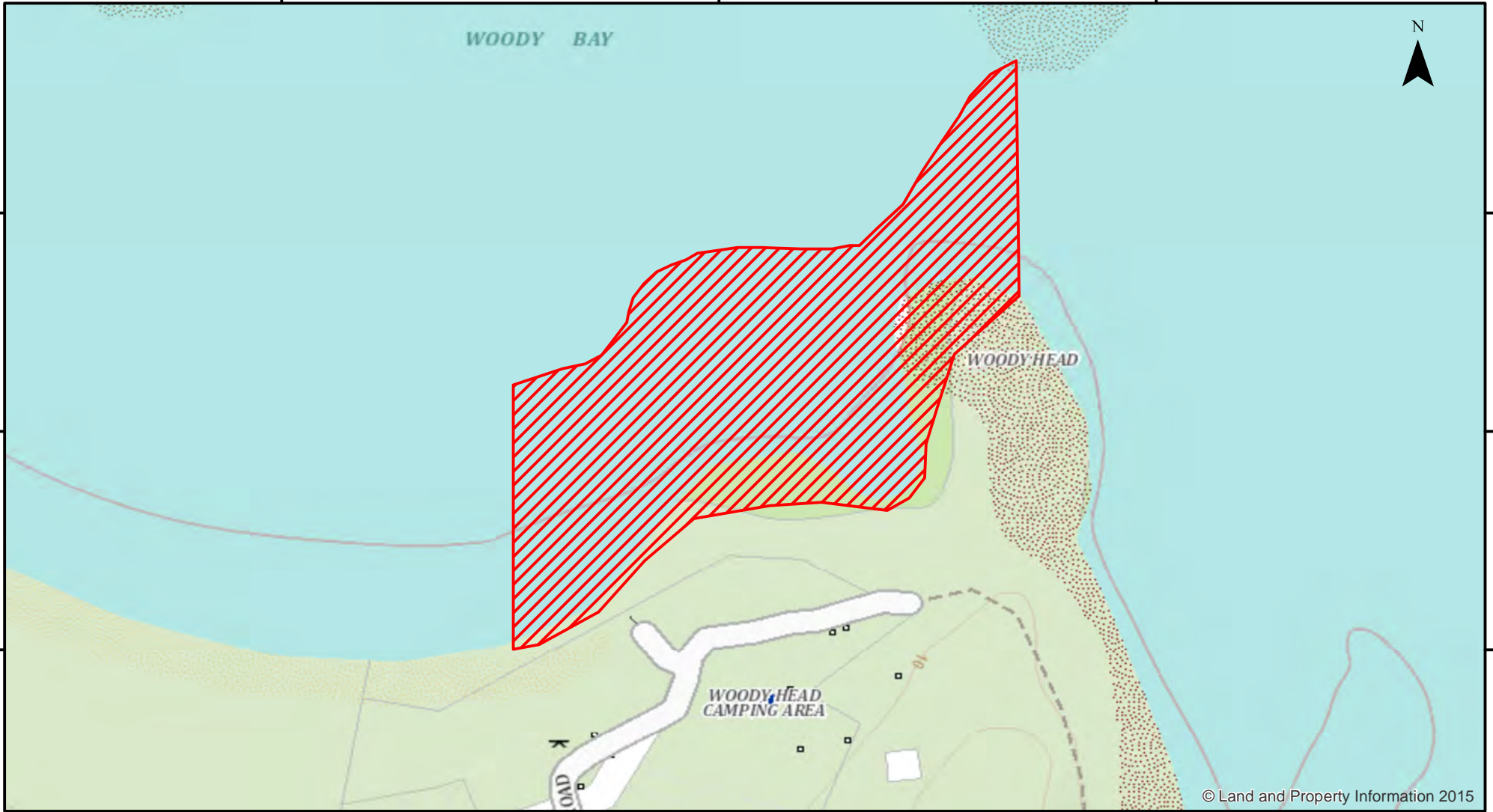
29°21'45"S

29°21'50"S

29°21'50"S

29°21'55"S

29°21'55"S



© Land and Property Information 2015



Closure

NSW DPI 7 February 2018
Coordinates are shown in WGS84

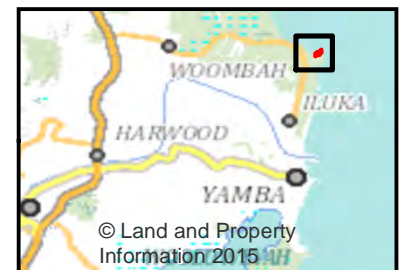
Notice to Map Users
Additional closures may apply. Primary Industries and its employees disclaim all liability for any actions or consequences arising from the use of this information. This map is not to be used for navigational purposes as it is indicative only and not guaranteed to be free of error or omission.

Closed Waters
The whole of the waters adjacent to the shoreline between the northeasternmost extremity of Woody Head and the post marked "NSWF" on the foreshore (near the western end of the Woody Head camping ground) approximately 300 metres along the shoreline.

0 0.0375 0.075 0.15 0.225 0.3



Kilometers



© Land and Property Information 2015