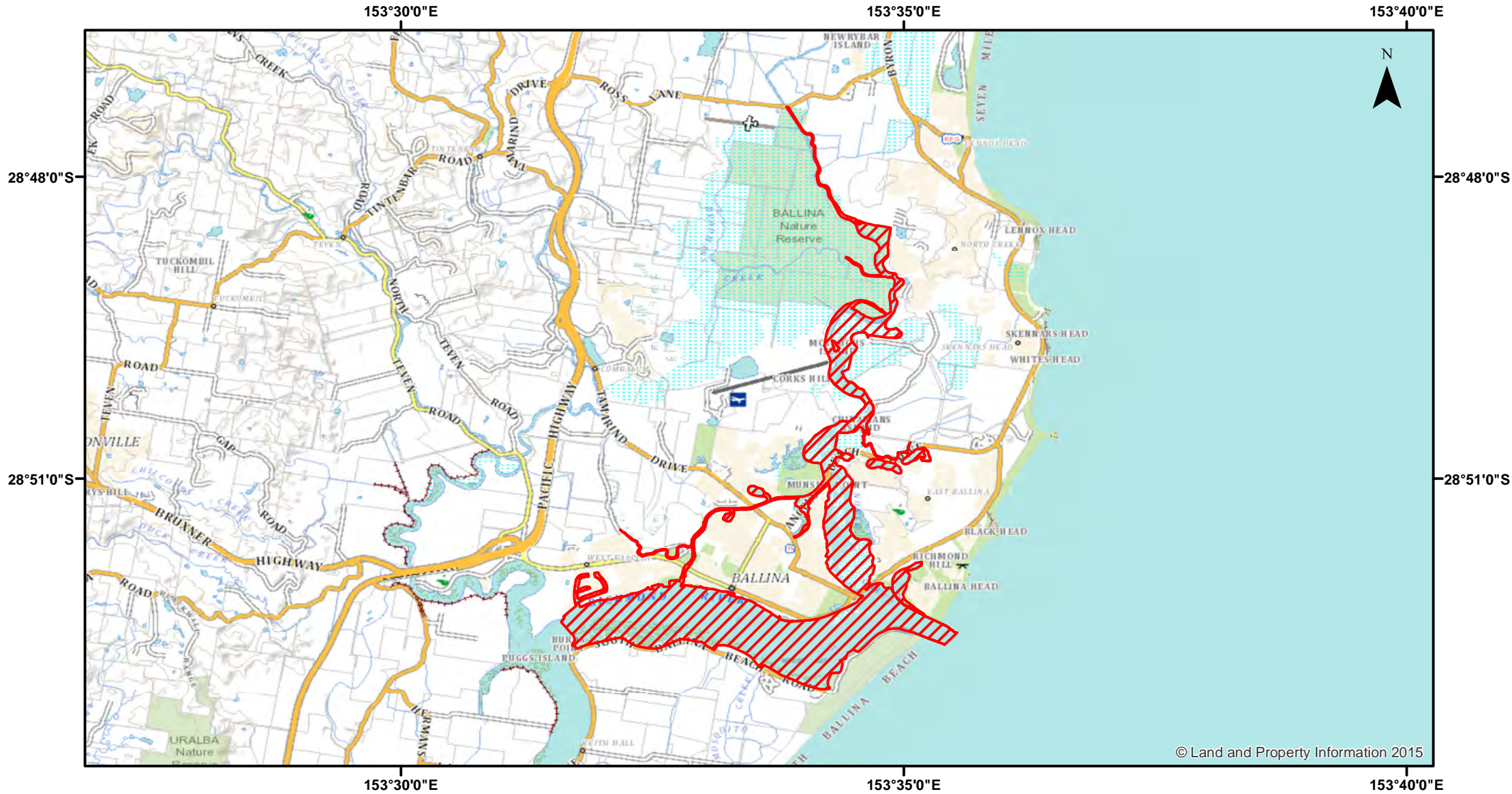


# Spearfishing - Richmond River



© Land and Property Information 2015



Closure

NSW DPI 26 April 2018  
Coordinates are shown in WGS84

**Closed Waters**  
The whole of the waters of the Richmond River and its tributaries upstream from a line drawn between eastern extremities of the northern and southern breakwalls at its confluence with the South Pacific Ocean to the Burns Point ferry crossing.

Notice to Map Users  
Additional closures may apply. Primary Industries and its employees disclaim all liability for any actions or consequences arising from the use of this information. This map is not to be used for navigational purposes as it is indicative only and not guaranteed to be free of error or omission.

