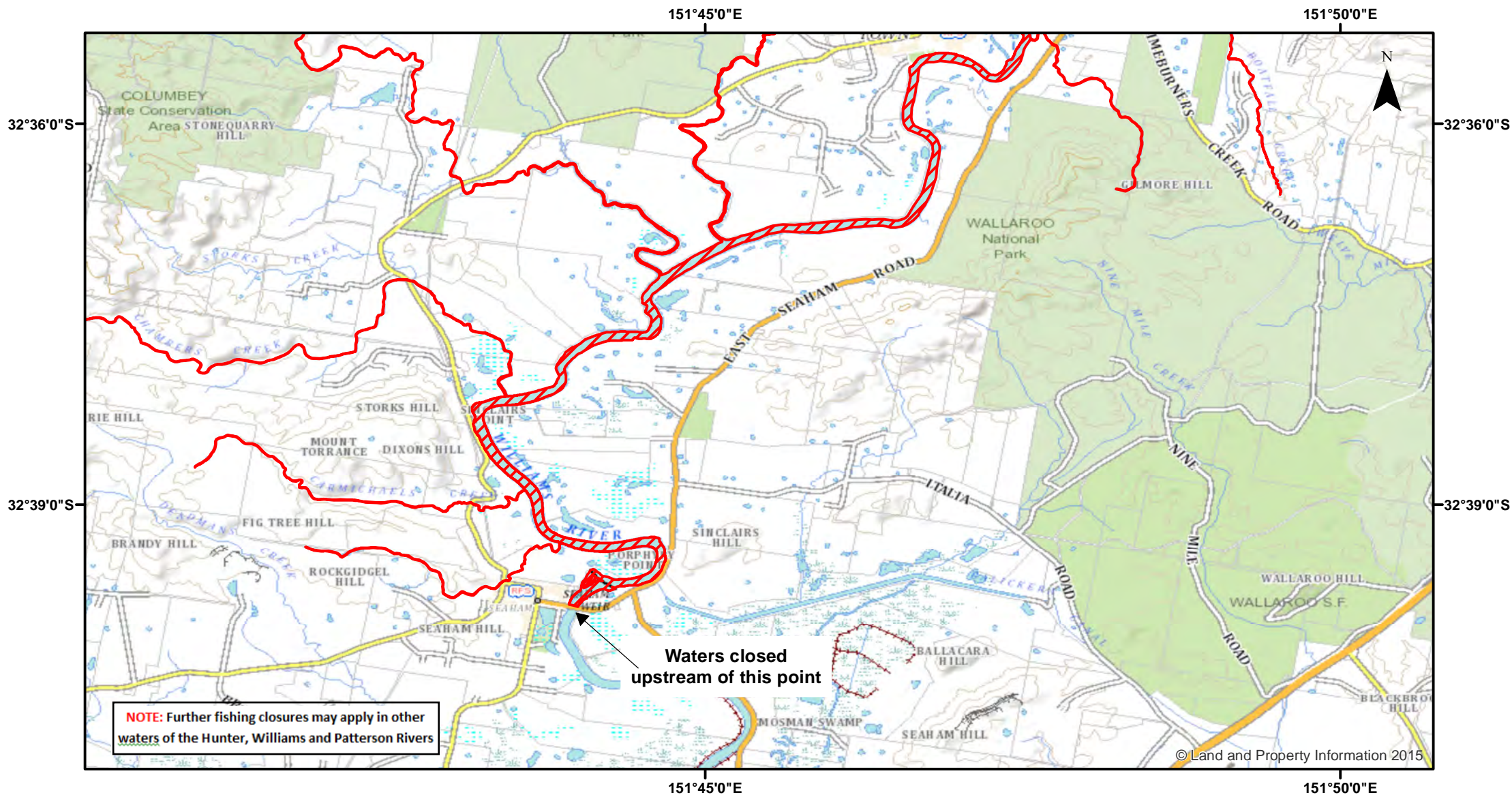


# Williams River (Upper Reaches) - Nets and Traps



Closure

NSW DPI 19 April 2018

Coordinates are shown in WGS84

## Notice to Map Users

Additional closures may apply. Primary Industries and its employees disclaim all liability for any actions or consequences arising from the use of this information. This map is not to be used for navigational purposes as it is indicative only and not guaranteed to be free of error or omission.

**Closed Waters**  
The whole of the waters of the Williams River and its tributaries, from the James Scott Bridge at Seaham, upstream to its source.

**Prohibited Method**  
Any method, other than the following; a hand held line, a dip or scoop net (prawns) or a landing net.

0 0.75 1.5 3 4.5 6

Kilometers

