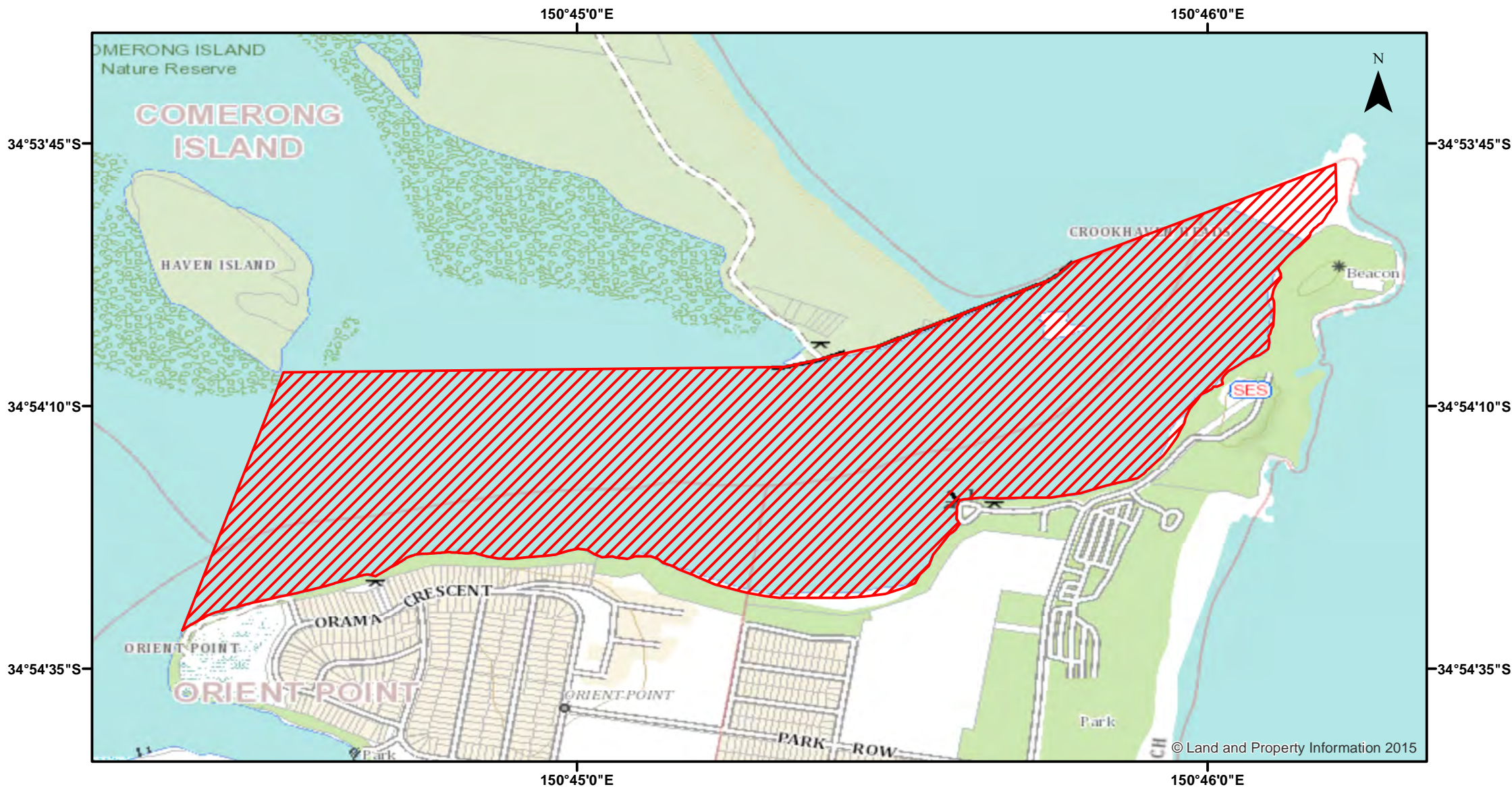


# Crookhaven River Entrance - Traps



Closure

NSW DPI 29 May 2018

Coordinates are shown in WGS84

Notice to Map Users  
Additional closures may apply. Primary Industries and its employees disclaim all liability for any actions or consequences arising from the use of this information. This map is not to be used for navigational purposes as it is indicative only and not guaranteed to be free of error or omission.

**Closed Waters**  
The whole of the waters of Crookhaven River, from its confluence with the South Pacific Ocean upstream to a line drawn from the western extremity of Orient Point, generally northeasterly to the southeastern extremity of Haven Island, then generally easterly to the western extremity of the training wall of Comerong Island.

**Prohibited Method**  
Trap other than a bait trap.

