

Brisbane Water (Cockle Creek) - Digging

151°21'0"E

151°22'0"E

151°23'0"E

151°24'0"E

33°28'20"S

33°29'10"S

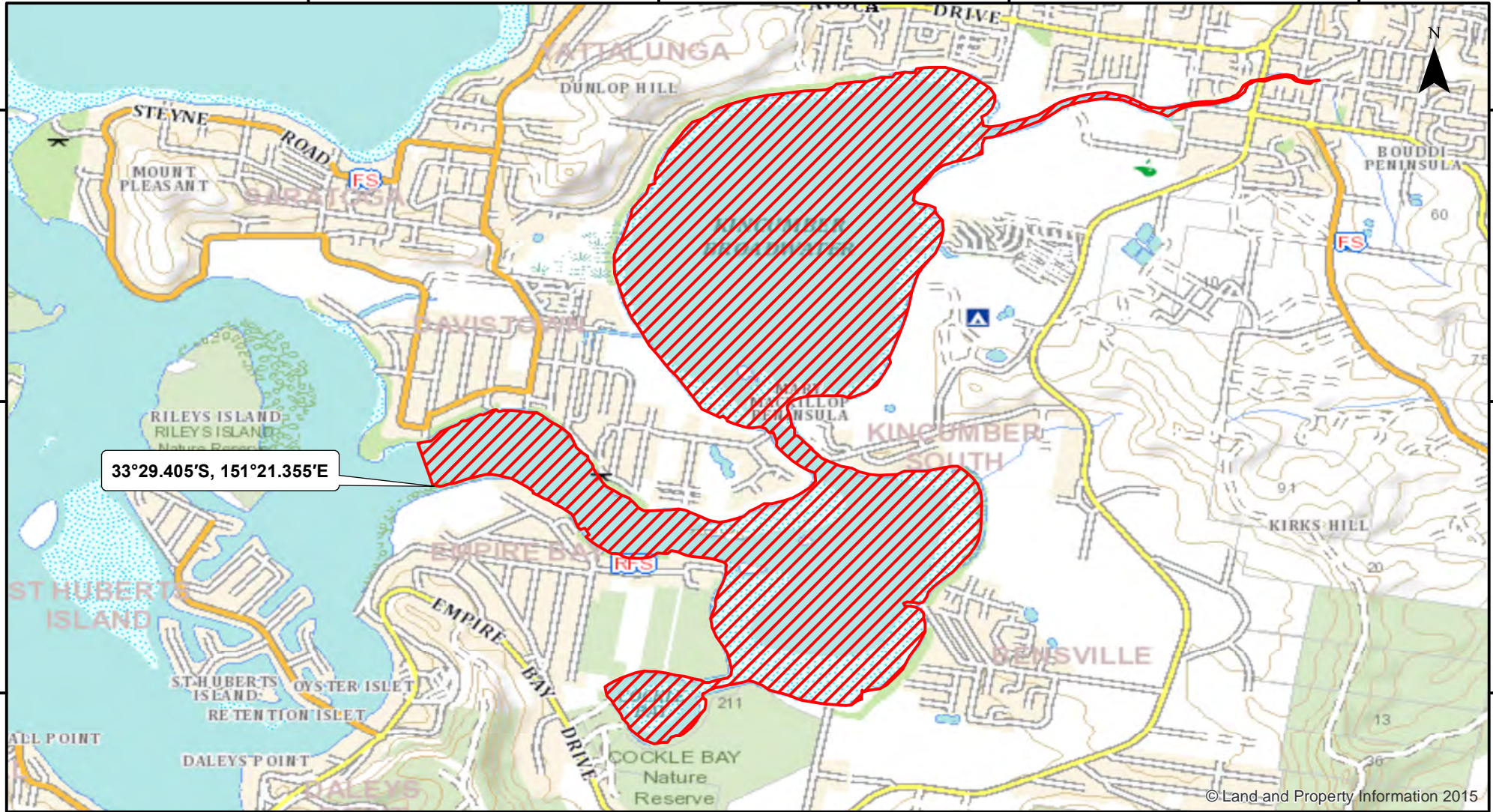
33°30'0"S

33°28'20"S

33°29'10"S

33°30'0"S

33°29.405'S, 151°21.355'E



© Land and Property Information 2015



Closure

NSW DPI 27 April 2018

Coordinates are shown in WGS84

Notice to Map Users
Additional closures may apply. Primary Industries and its employees disclaim all liability for any actions or consequences arising from the use of this information. This map is not to be used for navigational purposes as it is indicative only and not guaranteed to be free of error or omission.

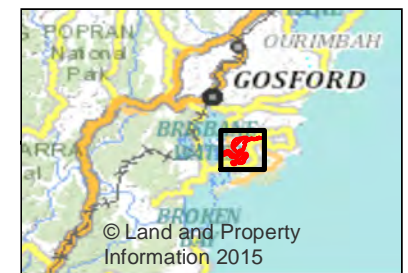
Closed Waters
The whole of the waters and intertidal zone of Brisbane Water, upstream to its source, from a line drawn from a point 33°29.405'S, 151°21.355'E generally north-westerly to the nearest point on the opposite shore at Davistown (includes waters of Cockle Creek, Cockle Channel, Empire Bay, Cockle Broadwater, Cockle Bay and Kincumber Creek).

Prohibited Method
The use of a spade or fork.

0 0.275 0.55 1.1 1.65 2.2



Kilometers



© Land and Property Information 2015