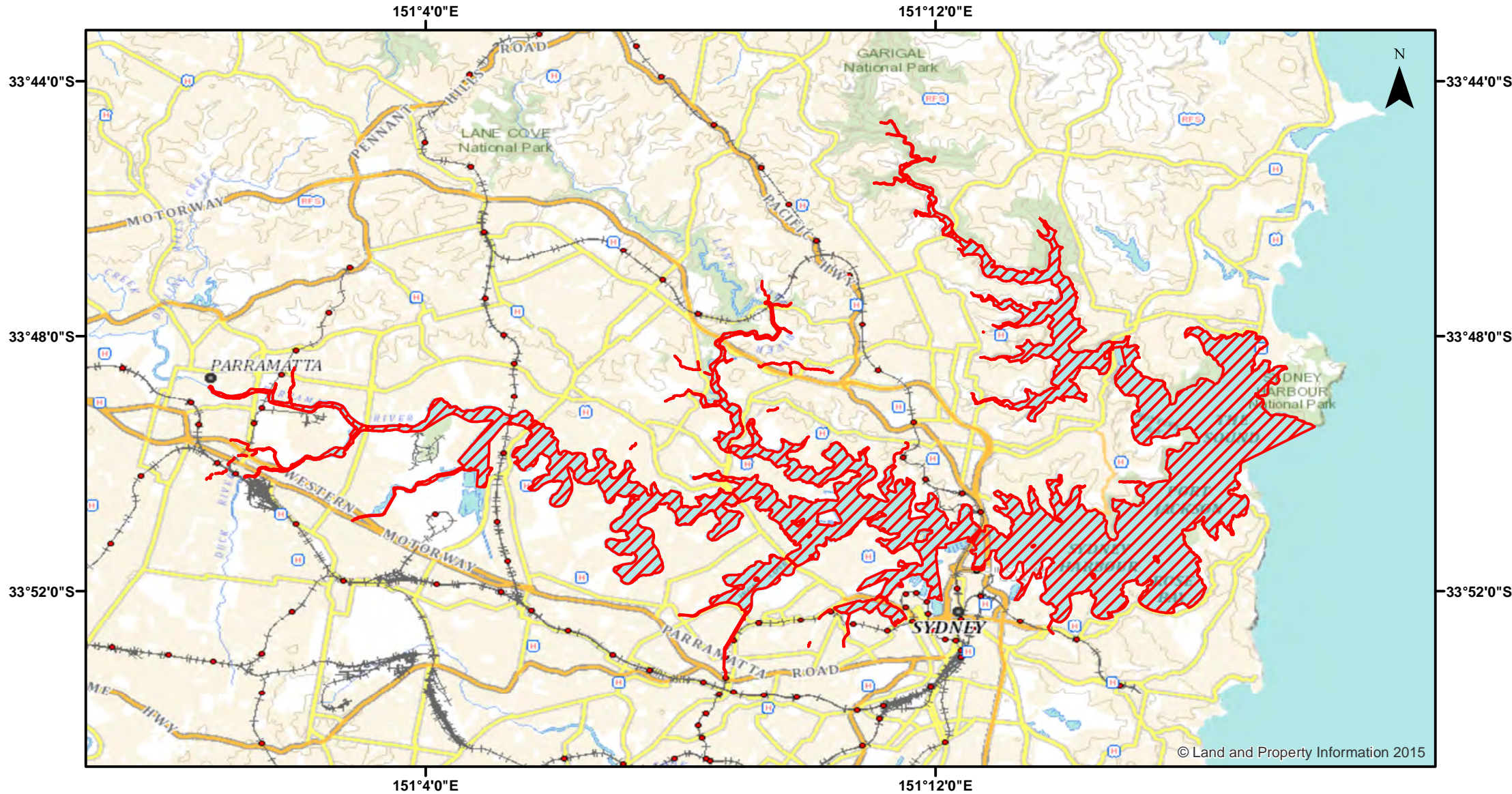


Port Jackson - Shellfish



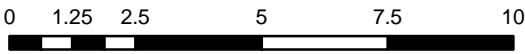
Closure

NSW DPI 30 April 2018

Coordinates are shown in WGS84

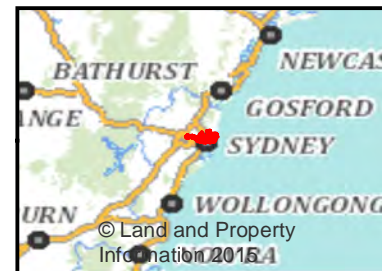
Closed Waters
 The whole of the tidal waters of Port Jackson and its tributaries, upstream from a line drawn from the northern extremity of South Head to the southern extremity of North Head.

Prohibited Species
 Any species of shellfish (Class: GASTROPODA / BIVALVIA).



Kilometers

Notice to Map Users
 Additional closures may apply. Primary Industries and its employees disclaim all liability for any actions or consequences arising from the use of this information. This map is not to be used for navigational purposes as it is indicative only and not guaranteed to be free of error or omission.



© Land and Property Information 2015