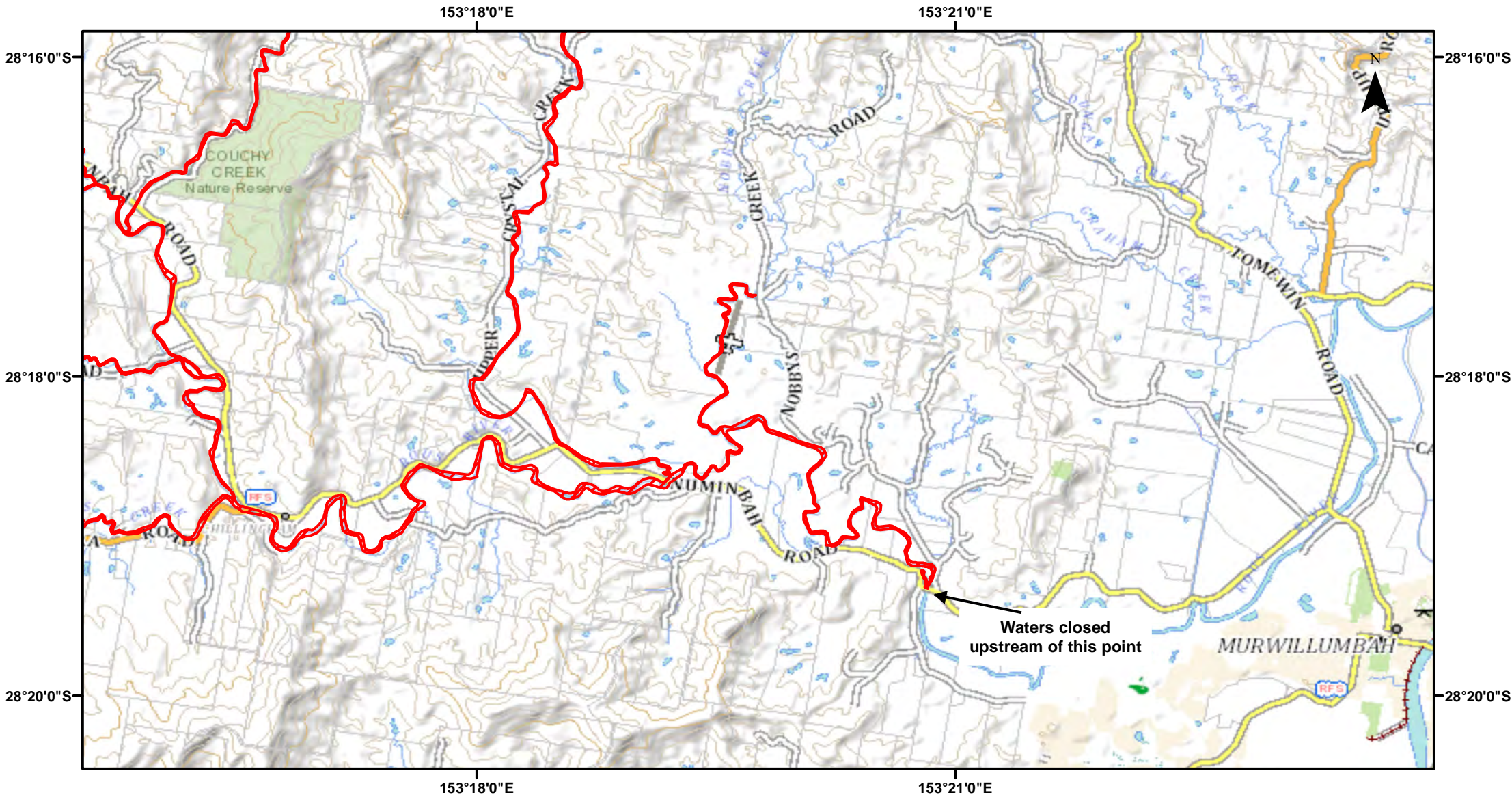


# Rous River (Upper Reaches) - Nets and Traps

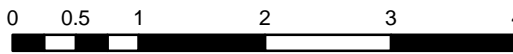


Closure

NSW DPI 14 August 2018  
Coordinates are shown in WGS84

**Closed Waters**  
The non tidal waters of the Rous River and its tributaries, from Boat Harbour Bridge upstream to its source.

**Prohibited Method**  
Nets or Traps, other than a landing net.



Kilometers

Notice to Map Users  
Additional closures may apply. Primary Industries and its employees disclaim all liability for any actions or consequences arising from the use of this information. This map is not to be used for navigational purposes as it is indicative only and not guaranteed to be free of error or omission.

