

Hapuku (*Polyprion oxygeneios*)

Assessment Authors and Year

Chick, R.C. and A. M. Fowler. 2024. Stock assessment report 2023/24 – Ocean Trap and Line Fishery (Line Fishing – Eastern Zone) – Hapuku (*Polyprion oxygeneios*). NSW Department of Primary Industries, Fisheries. 30 pp.

Stock Status

Current stock status	On the basis of the evidence contained within this assessment, Hapuku are currently assessed as undefined .
----------------------	--

Stock structure & distribution

Hapuku (*Polyprion oxygeneios*) is a large demersal perciform (ray-finned bony fish) broadly distributed in the temperate waters of all southern oceans between the latitudes of 28°S and 43°S (Paxton et al. 1989). The species occurs throughout NSW, with adults found on the continental slope commonly in depths ranging from about 200 m to 500 m.

The stock structure of Hapuku in NSW is unknown, with no genetic analyses or comparative demographic investigations conducted to date. The extended pelagic phase (egg, larval and juvenile phases - see below) and exposure to strong surface currents through association with floating objects during this period suggest mixing at the scale of ocean basins (Roberts 1996; Wakefield et al. 2010). Panmixia (random mating of individuals within the population) at this scale is supported for congener (same category of fish) *P. americanus* by genetic analyses (mtDNA and microsatellite; Sedberry et al. 1996; Ball et al. 2000), with Hapuku exhibiting similar life-history traits to *P. americanus*.

This report provides a stock status summary from a more detailed NSW stock assessment report (Chick and Fowler 2024).

Scope of this assessment

This stock status summary presents information and results from the most recent assessment of the NSW Hapuku (Chick 2024) that aimed to: 1) provide a summary of the biology and stock structure of Hapuku; 2) assess and determine the biological status of the NSW Hapuku stock, using criteria for the Status of Australian Fish Stocks (www.fish.gov.au/); 3) summarise the available fishery statistics and additional data sources to inform the assessment and aid in the determination of a Total Allowable Catch (TAC); 4) outline information and data limitations and uncertainty in the assessment; and 5) provide comment on the strategic direction for future research and assessment. Assessment of the NSW Hapuku is based on a weight-of-evidence approach, as the current understanding of stock structure and available data do not support a reliable model-based stock assessment.

Biology

Demographic information is unavailable for Hapuku in NSW. Investigations from Western Australia and New Zealand indicate the species can attain a large size (up to 180 cm total length, TL) and weight (78 kg), are long-lived (up to 63 years), and moderate- to late-maturing (7–13 years; Francis et al. 1999; Wakefield et al. 2010).

Hapuku spawn pelagic eggs during a defined season that varies among regions (Roberts 1989; Wakefield et al. 2010). Larvae and juveniles spend 2–4 years in surface waters before settling to adult demersal habitat on continental shelves and slopes.

Length at 50% maturity (L_{50}) in Western Australia has been estimated at 70 and 76 cm TL for males and females, respectively (Wakefield et al. 2010), and 85 and 88 cm TL for males and females, respectively in New Zealand (Johnston 1983). These lengths corresponded to ages at maturity (A_{50}) in Western Australia of 6.8 and 7.1 years for males and females, respectively (Wakefield et al. 2010) and 10–13 years for both sexes in New Zealand (Francis et al. 1999). Estimates of natural mortality (M), previously assumed to be 0.2, suggest it may be as low as 0.13–0.16 (Pavez and Oyarzun 1985) and Francis et al. (1999) estimated M to be 0.1 (or less).

A length sample obtained from the commercial fishing sector in NSW during the 1990s indicated that fish were of similar size to those caught in Western Australia and New Zealand (Francis et al. 1999; Wakefield et al. 2010).

Growth rates for Hapuku are age-dependent. Estimates from Western Australia indicate fast initial growth (~15–30 cm TL year⁻¹) during the pelagic juvenile phase, followed by moderate growth (~4.0 cm year⁻¹) during ages 5–9 years, reducing to slow growth (~0.4 cm year⁻¹) beyond 10 years (Wakefield et al. 2010). The intermediate growth rate is similar to that reported from tag-recapture data in New Zealand (~4.3 cm TL year⁻¹; Francis et al. 1999).

Fishery statistics

Catch information

Commercial

Since 2012/13, Hapuku have been almost entirely caught in the OTL Fishery (i.e. >99% of total annual reported catch). Prior to 2012/13, minor catches (0–12% of total annual catch) of Hapuku were reported in the Ocean Fish Trawl and Ocean Prawn Trawl Fisheries. Historically, annual catches >100 t have been reported (e.g. 136 t in 1977/78) but these records include unknown proportions of *P. americanus* and unknown but anecdotally reported large catches taken from seamounts, outside of NSW waters. Total annual reported commercial catch of Hapuku has decreased steadily through time, from annual catches >10 t reported prior to 2003/04, including the historical peak of 15.6 t in 1999/00, to <2.5 t in each of the ten years since 2012/13 and in 2022/23, total catch was 0.5 t (Figure 1). Since 1997/98, the majority of Hapuku catch within the OTL Fishery has been reported against dropline gear (mean: 74%, range: 21–99%). Although since 2017/18, and as annual catches have continued to decrease, this proportion has become more volatile, with 21% of the 0.6 t catch in 2019/20, and 95% of the 0.6 t catch in 2022/23 reported to dropline gear. Handlining accounts for most of the remaining catch (mean 14%, range: 0–52%)

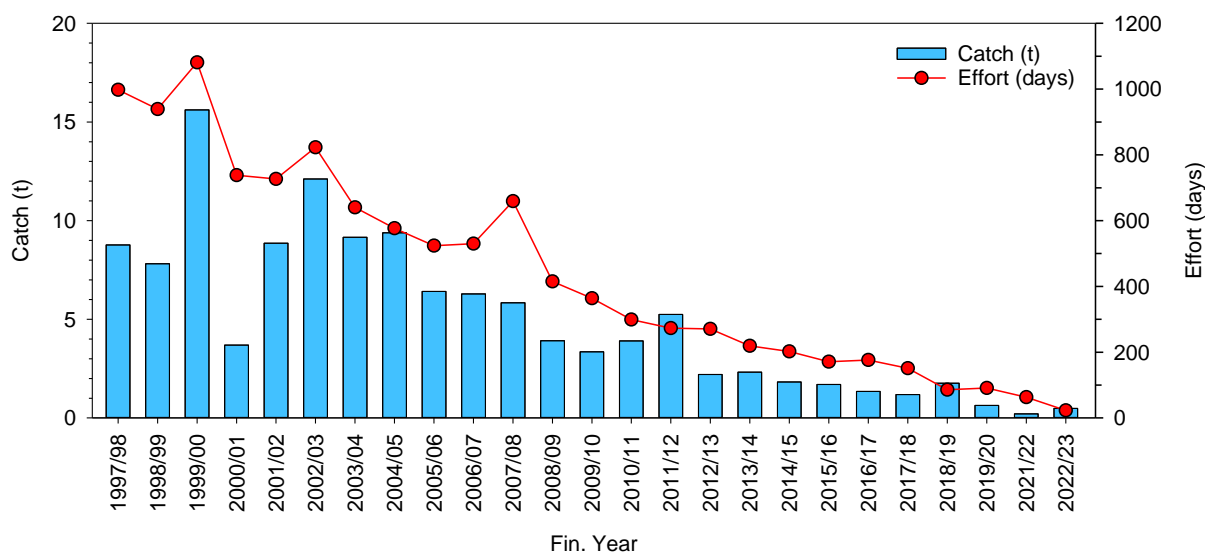


Figure 1. Total catch (t) of Hapuku and total effort (days) from 1997/98 to 2022/23. Note: effort (days) from 2009/10 are days fished per month irrespective of species reported, to be consistent with effort reported from 1997/98 to 2008/09.

Recreational & Charter boat

Recreational catches are uncertain. Logbook returns from the NSW Charter Boat sector report the catch of ≤ 2 individual Hapuku each year from 2016/17 to 2021/22, with no Hapuku reported in 2020/21, and no records for 2022/2023. However, anecdotal evidence, including social media reports of catches of Hapuku and Bass Groper, suggests the NSW recreational catch of these species in some years may equate to a substantial proportion of the total catch in some years.

Indigenous

Aboriginal cultural catches are unknown.

Illegal, Unregulated and Unreported

The level of Illegal Unregulated and Unreported (IUU) fishing has not been quantified.

NSW Fisheries Compliance provide annual summaries of seizures of fish and invertebrates due to non-compliance to the public (dpi.nsw.gov.au/fishing/compliance/fisheries-compliance-enforcement). In 2020/21, there were targeted compliance operations on unlicensed charter fishing activities in the Sydney area and illegal take of deep-water fish species off Sydney. Further, in 2021/22, there was targeted compliance operations on illegal offshore recreational and commercial fishing – operation DPI Alpha Hotel 21 (September 2021 – May 2022). Public reports from NSW Fisheries Compliance have not highlighted IUU activity specific to Hapuku within financial years between 2014/15 and 2021/22.

Fishing effort information

Total annual commercial effort reflects that of total catch, with a general decrease over the reporting period. Total effort across all methods that have caught Hapuku has decreased from ~ 1000 days per year from 1997/98 to 1999/00 to < 100 days in the last five years and 23 days reported in 2022/23 (Figure 1), consistent with a decline in the number of fishing business reporting catches of Hapuku. Peaks in effort were observed during 1999/00, 2002/03 and 2007/08. Peaks in effort during 1999/00 and 2002/03 corresponded with peaks in total

catch, but not during 2007/08, which reflects a disproportionate increase in effort (days) reported using dropline gear.

Catch rate information

Catch rates (catch-per-unit-effort, CPUE) for dropline have been standardised in two separate periods: 1997/18-2008/09 and 2009/10-2022/23. This was done to eliminate the potential effect of the 2009/10 reporting change on apparent trends in CPUE. The effort unit used in the first period was days fished (CPUE_d), whereas the effort unit used in the second period was number of hooks (CPUE_h).

CPUE_d for droplining showed an increasing trend between 1997/98 and 2008/09, whereas the series CPUE_h between 2009/10 and 2022/23 demonstrates higher variability, and whilst this precludes an interpretation of a significant change through time, the series indicates a decreasing trend within the last eight years, with the two most recent years being the lowest in the series (Figure 2).

Due to limited effort, too few handline catches occurred prior to 2012/13 to allow meaningful standardisation of catch rates. Median nominal CPUE_d for handlining showed no trend between 1997/98 and 2022/23 (Figure 3), including during the recent period of relatively high effort (2009/10 to 2017/18). Peaks in median CPUE_d were observed during 2002/03, 2011/12 and to a lesser extent 2018/19, with the 95% confidence interval in 2011/12 not overlapping those in surrounding years, noting the potential uncertainty surrounding estimates derived from low numbers of fishing events.

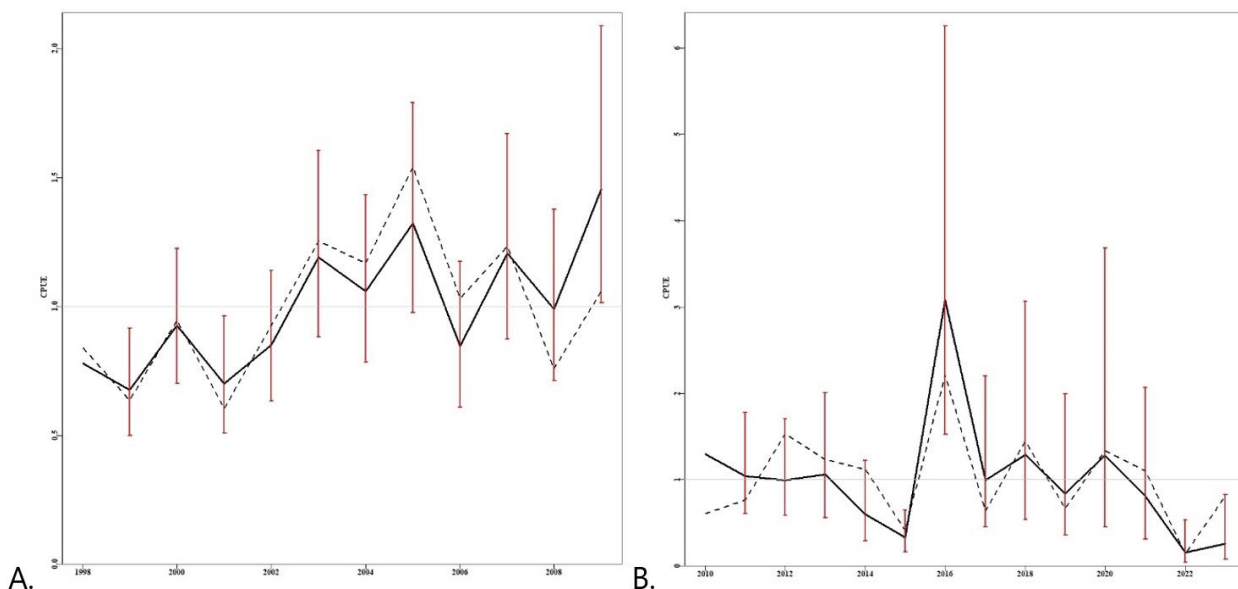


Figure 2. Droplining only – Standardised CPUE values (black solid line) for two adjoining time periods: A) 1997/98 to 2008/09 and B) 2009/10 to 2022/23. Values are scaled by the average within each series. Error bars represent 95% confidence intervals. The dashed line indicates the geometric mean CPUE. The series is not continuous due to changes in effort reporting initiated in 2009/10. Note that the y-axis range differs between the two plots.

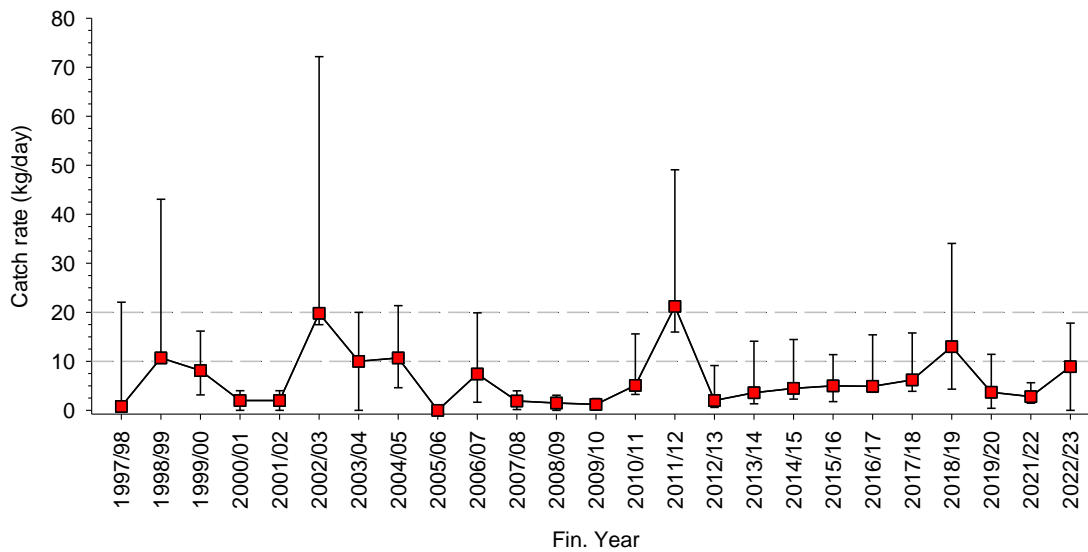


Figure 3. Handline only – median nominal CPUE (kg.day⁻¹) for Hapuku from 1997/98 to 2022/23. Error bars represent interquartile ranges.

Stock Assessment

Stock Assessment Methodology

Year of most recent assessment:

2024 (using data to the end June 2023)

Assessment method:

A review of indicators (weight-of-evidence approach) was used to assess the status of the NSW Hapuku stock. There are insufficient data available to support more quantitative stock assessment methods.

Main data inputs:

- Commercial catch from the NSW OTLLE Fishery from 1997/98 to present
- Commercial fishery OTLLE – dropline standardised catch rate (CPUE_d) from 1997/98 to 2008/09 and 2009/10 to present
- Commercial fishery OTLLE – handline nominal catch rate (CPUE_h) from 1997/98 to present

Key model structure & assumptions:

NA – no model-based quantitative assessment approach was used.

Sources of uncertainty evaluated:

General data limitations and uncertainty was considered in the weight-of-evidence approach.

Status Indicators - Limit & Target Reference Levels

Biomass indicator or proxy	No formal indicator specified
----------------------------	-------------------------------

	<ul style="list-style-type: none"> • Standardised (OTLLE dropline) CPUE_{dy} (effort: days fished) and CPUE_{nh} (effort: number of hooks) • Nominal (OTLLE handline) CPUE_{dy} (effort: days fished)
Biomass Limit Reference Point	None specified in a formal harvest strategy
Biomass Target Reference Point	None specified in a formal harvest strategy
Fishing mortality indicator or proxy	<p>None specified in a formal harvest strategy</p> <p>This assessment used a weight-of-evidence approach, with data including:</p> <ul style="list-style-type: none"> • Catch (OTLLE, dropline, handline)
Fishing mortality Limit Reference Point	None specified in a formal harvest strategy
Fishing Mortality Target Reference Point	None specified in a formal harvest strategy)

Stock Assessment Results

Hapuku are currently assessed as **undefined**.

The assessment and determination of stock status is limited to the use of increasingly fewer commercial fishery-dependent data. Without alternate data or information to support the assessment it is unlikely that the 'Undefined' status of Hapuku will change. Importantly, the stock status determination of 'Undefined' does not exclude the possibility of the stock being overfished or subject to overfishing and, together with life history characteristics that make Hapuku vulnerable to high fishing mortality, suggests adoption of precautionary management approaches, for all sectors.

Together with the uncertainty in total fishing mortality, demographic characteristics of late maturity, slow growth in later life and extended longevity reported from other regions and congener species suggest that the NSW stock(s) of Hapuku is vulnerable to exploitation (Sedberry et al. 1999; Peres and Haimovici 2004; Wakefield et al. 2010). Demography also likely varies across the extent of the stock(s) structure, as reported for south-western Australian stocks (Wakefield et al. 2010) and the extent of stock connectivity could be complex given life-history characteristics and oceanography of the region (e.g. south-east Australian stocks of Blue-eye Trevalla; Williams et al. 2017). Added to these stock(s) and species-specific uncertainties are broader pressures placed on stocks from human induced environmental processes such as climate change (e.g. ocean temperature and pH changes), resulting in greater variability in population responses to all pressures including fishing but also changes that are also likely to impact on fishing activities (Fulton et al. 2020). These uncertainties, together with fishing pressures, could precipitate localised depletions or demographic shifts in stocks.

A weight-of-evidence approach was used to assess the status of the NSW Hapuku stock(s). There are insufficient data available to support more quantitative stock assessment methods. Uncertainty regarding stock structure and biology; decreasing and low levels of commercial catch together with similar patterns in effort (days), and low and variable catches and effort between different commercial fishing methods exacerbate uncertainty surrounding estimates of CPUE and their use as a proxy for change in biomass; no quantitative measure or indicative trend in recreational catch; and proportionally large and declining levels of Commonwealth catch, with no described effort series and a defined Commonwealth stock status of undefined, provide insufficient information with which to support a reliable determination of stock status for NSW. On the basis of the evidence provided the NSW Hapuku stock is classified as **undefined**.

Stock Assessment Result Summary

Biomass status in relation to Limit	NA – no biomass limits has been set. Weight-of-evidence provided is insufficient to support an understanding of the level or trend in biomass.
Biomass status in relation to Target	NA – no biomass target has been set.
Fishing mortality in relation to Limit	NA – no fishing mortality limit has been set. Weight-of-evidence provided is insufficient to support an understanding of the level or trend in fishing mortality.
Fishing mortality in relation to Target	NA – no fishing mortality target has been set.
Current stock status	Undefined

Fishery interactions

Hapuku are primarily caught as bycatch when fishing for Blue-eye Trevalla (*Hyperoglyphe antartica*). Catches of Hapuku and associated fishery statistics are likely influenced by changes in fishing operations and activity for Blue-eye Trevalla.

Hapuku are landed in Australian Commonwealth fisheries, off the east coast of Australia, including waters east of NSW jurisdictional management (AFMA 2021; generally decreasing annual catches; average catch of 59.3 t.yr⁻¹ (range: 20.1 – 144.7 t) between 2002 to 2018; 20.1 t caught in 2018). In 2019, the total catch of Hapuku in Commonwealth Fisheries was 42 t (Chick et al. 2021). In 2022/23, 6 t of Hapuku was retained in the Commonwealth Southern and Eastern Scalefish and Shark Fishery (Butler et al. 2023). However, Hapuku are not a quota-managed species in the Commonwealth. The Commonwealth has conducted a Sustainability Assessment for Fishing Effects (SAFE) and residual risk assessment and, in 2018, a Catch-MSY assessment indicating biomass was ~33% of unfished levels and fishing mortality was too high. However, uncertainty in stock structure and levels of catch below those projected to inform future stock status resulted in a Commonwealth stock status classification of undefined (Chick et al. 2021).

Stakeholder engagement

Data supporting the assessment of Hapuku are primarily fishery-dependent i.e. sourced from NSW commercial fishery logbook data provided by shareholders/fishers. DPI Fisheries convened a discussion of the stock assessment report. The primary objective was to present the data and its interpretation, discuss relevant issues influencing the data and the assessment and information from stakeholders who have contributed to the primary sources of data to help inform the assessment. Unfortunately, no stakeholders attended the presentation of the assessment for 2023/24, using data to the end of 2022/23. Engagement in December 2022 for the assessment for 2022/23, included comments regarding low catch because of the reduced access to the stock (limited quota) and active avoidance of possible by-catch and the need to discard due to limited quota holding whilst fishing for Blue-eye Trevalla. In addition, during that meeting stakeholders indicated that the relatively low quota holdings of many fishers had reduced the economic viability of fishing and the quota trading market was difficult to navigate. It is unclear if stakeholders consider these issues as remaining substantial influences on the available data to inform the assessment of Hapuku for 2023/24, which only adds further uncertainty to this assessment.

Qualifying Comments

There are risks to the future sustainability of the NSW Hapuku fishery as a consequence of data limitations, knowledge gaps and imprecise data that provide uncertainty in the assessment and has resulted in a stock status

determination of undefined. These include: i) stock structure for Hapuku is unknown, however, it is possible that the stock is broadly distributed throughout south-eastern Australia, or further, and the harvest of Hapuku from NSW and other jurisdictions (e.g. Commonwealth) is from a common stock; ii) changes to reporting (e.g. no requirement to report vessel number) and decreasing fishing events and active fishing businesses provide high levels of uncertainty in estimates of CPUE, used as a proxy for changes in biomass; iii) levels of recreational and Aboriginal cultural catch are unknown, but the latter likely relatively low and iv) uncertainty in the response of Hapuku stock(s) to factors other than fishing, including changing environmental pressures associated with climate change.

NSW catch and effort logbook data vary spatially and temporally across different eras, delineated by changes in fisher reporting requirements and other management changes (Appendix 1). To limit potential bias in time-series generated by such reporting changes, standardised CPUE for dropline was examined in two separate periods, before and after the major reporting change in 2009/10. CPUE values near the end of the first period and the beginning of the second period were also not substantially different from other values in each respective series.

Recreational catch of Hapuku and its temporal variability is not captured in the large-scale surveys done to estimate levels of recreational harvest in NSW. Anecdotal evidence from social media posting suggests recreational catch could be a substantial contributor to total catch, particularly as commercial catch continues to decrease, although there are high levels of uncertainty associated with the sources of these data. Given the relatively low recreational effort on offshore/deep species relative to nearshore environments, it is difficult to obtain a reliable estimate of catches of species from this niche component of the broader recreational fishing sector. Even with bag and boat limit restrictions the proportion of recreational catch to commercial catch could be high with relatively low levels of recreational effort. Reducing uncertainty in the relative contribution the recreational fishery makes to fishing mortality will require a targeted recreational survey for these niche species, which is likely more cost effective than modifying the survey design supporting the broader recreational fishing survey program.

Factors other than fishing, including climate change and other environmental processes, may affect changes in the abundance and biological functioning of the NSW Hapuku stock(s). Temporal and spatial variations in oceanographic conditions, including temperature and pH change, may influence available trophic resources, growth, population connectivity and distribution and recruitment. Predictions of change to oceanic conditions and subsequent influences on fish stocks within the broad south-eastern area of Australia, including NSW waters strongly suggest the need to consider these influences in response to changes in the assessment of stocks (Champion et al. 2022, Fulton et al. 2020), including possible opportunities from positive outcomes for some fish stocks (Hobday et al. 2018, Ogier et al. 2020). These processes may have potentially substantial yet unknown consequences for NSW Hapuku stock(s). Further, whilst fishers reported reduced market opportunities to sell product in 2021/22 (e.g. local restaurants being closed) due to the management of the COVID-19 pandemic (Chick and Fowler 2021), the persistence of this market disruption through 2022/23 and the level of impact on the fishery has not been quantified.

References

- AFMA (Australian Fisheries Management Authority). 2021. Reported landed annual catch from Commonwealth fisheries catch disposal records. Accessed 10/11/2021. <https://data.gov.au/data/dataset/0cd2ec97-d13c-4b02-8071-fd778fcddee7/resource/81d3d265-b21a-4b05-b62d-c315beec771e/download/annual-cdr-catch-data-29-06-2020.xlsx>.
- Ball, A. O., Sedberry, G. R., Zatzoff, M. S., Chapman, R. W., and Carlin, J. L. 2000. Population structure of the wreckfish *Polyprion americanus* determined with microsatellite genetic markers. *Marine Biology*, 137: 1077–1090.
- Chick, R.C. and A. M. Fowler. 2024. Stock assessment report 2023/24 – Ocean Trap and Line Fishery (Line Fishing – Eastern Zone) – Hapuku (*Polyprion oxygeneios*). NSW Department of Primary Industries, Fisheries. 30 pp.
- Chick, R.C. and A. M. Fowler. 2021. Stock assessment report 2020/21 – Ocean Trap and Line Fishery (Line Fishing – Eastern Zone) – Hapuku (*Polyprion oxygeneios*). NSW Department of Primary Industries, Fisheries. 26pp.
- Chick RC, Fowler A, Georgeson I, Norriss J, Roelofs A, and Rogers. 2021. Hapuku *Polyprion oxygeneios*, in Toby Piddocke, Crispian Ashby, Klaas Hartmann, Alex Hesp, Patrick Hone, Joanne Klemke, Stephen Mayfield, Anthony Roelofs, Thor

- Saunders, John Stewart, Brent Wise and James Woodhams (eds) 2021, Status of Australian fish stocks reports 2020, Fisheries Research and Development Corporation, Canberra. <https://www.fish.gov.au/report/332-Hapuku-2020>
- Francis, M. P., Mulligan, K. P., Davies, N. M., and Beentjes, M. P. 1999. Age and growth estimates for New Zealand hapuku, *Polyprion oxygeneios*. Fishery Bulletin 97(2): 227–242.
- Hobday, A.J., Gretta, P.T., Fulton, B., Pethybridge, H., Bulman, C., and Villanueva, C. 2018. Chapter 16: Climate change impacts, vulnerabilities and adaptations: Australian marine fisheries. In: Barange, M., Bahri, T., Beveridge, MCM., Cochrane, K.L., Funge-Smith, S. and Poulain, F., Eds. 2018. Impacts of climate change on fisheries and aquaculture: synthesis of current knowledge, adaptation and mitigation options. FAO Fisheries and Aquaculture Technical Paper No. 627. Rome, FAO. 628 pp.
- Johnston, A. D. 1983. The southern Cook Strait groper fishery. Fisheries Technical Report 159, New Zealand Ministry of Agriculture and Fisheries, Wellington. 33p.
- Ogier, E., Jennings, S., Fowler, A., Frusher, S., Gardner, C., Hamer, P., Hobday, A.J., Linanne, A., Mayfield, S., Mundy, C., Sullivan, A., Tuck, G., Ward, T. and Pecl, G. 2020. Responding to Climate Change: Participatory Evaluation of Adaptation Options for Key Marine Fisheries in Australia's South East. *Frontiers in Marine Science*, 7 (97). <https://doi.org/10.3389/fmars.2020.00097>
- Pavez, P. and Oyarzun, M. E. 1985. Determination of the relative efficiency of hooks, and growth parameters of the Juan Fernandez "cod" *Polyprion oxygeneios* Bloch and Schneider, 1801, in the Robinson Crusoe and Santa Clara Islands. In: Arana, P. (Ed.), *Investigaciones en el Archipelago de Juan Fernandez*, pp. 341–345. Escuela de Ciencias del Mar, Universidad Catolica de Valparaiso, Valparaiso. [In Spanish, English summary].
- Paxton, J. R., Hoese, D. F., Allen, G. R., and Hanley, J. E. 1989. Pisces. Petromyzontidae to Carangidae Zoological Catalogue, 7. Australian Government Publishing Service, Canberra, Australia.
- Peres, M. B., and Haimovici, M. 2004. Age and growth of southwestern Atlantic wreckfish *Polyprion americanus*. *Fisheries Research*, 66(2-3): 157-169.
- Roberts, C. D. 1989. Reproductive mode in the percomorph fish genus *Polyprion* Oken. *Journal of Fish Biology*, 34(1): 1–9.
- Roberts, C. D. 1996. Hapuku and bass: the mystery of the missing juveniles. *Seafood New Zealand*, 4: 17–21.
- Sedberry, G. R., Carlin, J. L., Chapman, R. W., and Eleby, B. 1996. Population structure in the pan-oceanic wreckfish, *Polyprion americanus* (Teleostei: Polyprionidae), as indicated by mtDNA variation. *Journal of Fish Biology*, 49: 318–329.
- Sedberry, G.R., Andrade, C.A., Carlin, J.L., Chapman, R.W., Luckhurst, B. E., Manooch III, C. S., Menezes, G., Thomsen, B., and Ulrich, G. F. 1999. Wreckfish *Polyprion americanus* in the North Atlantic: fisheries, biology, and management of a widely distributed and long-lived fish. *American Fisheries Society Symposium* 23: 27–50.
- Wakefield, C. B., Newman, S. J., and Molony, B. W. 2010. Age-based demography and reproduction of hapuku, *Polyprion oxygeneios*, from the south coast of Western Australia: implications for management. *ICES Journal of Marine Science*, 67(6): 1164–1174.
- Williams, A., Hamer, P., Haddon, M., Robertson, S., Althaus, F., Green, M. and Kool, J. 2017. Determining Blue-eye Trevalla stock structure and improving methods for stock assessment. CSIRO, Hobart. 124p. <https://doi.org/10.4225/08/58a5e8c609395>

© State of New South Wales through Regional NSW 2024. The information contained in this publication is based on knowledge and understanding at the time of writing (Feb, 2024). However, because of advances in knowledge, users are reminded of the need to ensure that the information upon which they rely is up to date and to check the currency of the information with the appropriate officer of the Regional NSW or the user's independent adviser.